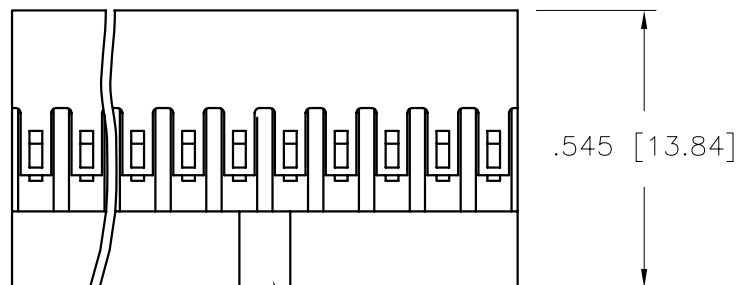
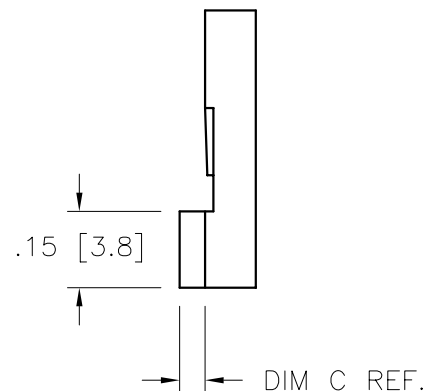
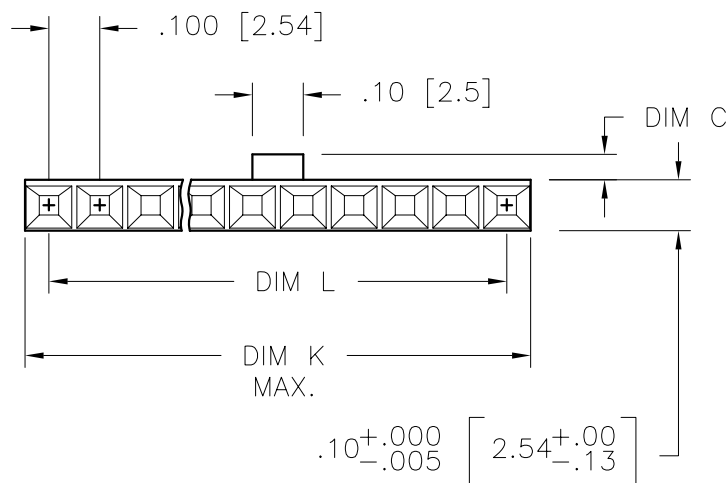


PRODUCT NO.  
SEE TABLE



NOTE 5





NOTES:

1. MOLDING MATERIAL: MODIFIED POLYPHENYLENE ETHER, FLAME RETARDANT PER UL-94V-0, COLOR: BLACK.
2. TO BE MATED WITH PIN .225±.015/5.72±0.38 LONG.
3. THIS HOUSING IS INTENDED FOR USE WITH MINI PV™ WITH 22-36 AWG. WIRE.
4. FOR APPLICATION INFORMATION SEE TA-531. PRODUCT SPECIFICATION: BUS-12-067.
5. CORING CONFIGURATION IN POLARIZING KEY IS MANUFACTURING OPTION.
6. PRODUCT MEETS EUROPEAN UNION DIRECTIVES AND OTHER COUNTRY REGULATIONS AS DESCRIBED IN GS-22-008.
7. THIS PRODUCT IS NOT INTENDED TO BE EXPOSED TO MANUFACTURING SOLDER PROCESSES.



FCIconnect.com

Copyright FCI

mat'l. code SEE NOTE 1				surface ✓		tolerance		projection 		product family PV HOUSINGS			
ltr	ecn no	dr	date	tolerances unless otherwise specified				INCH/MM		title			
K	v07-0533	HTB	2007-08-21	angles		linear				MINI LATCH HOUSING SR POLARIZED .100 [2.54] CC			
-	-	-	-							dwg no			
E	v90975	BKB	1999-06-24	0°±2°				scale 3:1		sheet 1 of 2		size	
F	v00478	RGD	2000-02-03	dr	M. FETROW	1989-07-12				78211			A3
G	v03-1361	PJ	2004-02-16	engr	H. SUNDY	1989-07-12							
H	v05-0716	TAB	2005-07-29	chr	H. SUNDY	1989-07-12							
J	v06-0446	HTB	2006-05-15	appd	H. SUNDY	1989-07-12							
sheet index		revision sheet		K	K						type Product Customer Drawing		
				1	2								

form A3



FCJconnect.com

Copyright FCJ

PRODUCT NUMBER	NO OF POS	DIM K	DIM L	DIM C
78211-003LF	3	.300/7.62	.200/5.08	.050/1.27
78211-004LF	4	.400/10.16	.300/7.62	.050/1.27
78211-005LF	5	.500/12.70	.400/10.16	.050/1.27
78211-006LF	6	.600/15.24	.500/12.70	.050/1.27
78211-007LF	7	.700/17.78	.600/15.24	.050/1.27
78211-008LF	8	.800/20.32	.700/17.78	.050/1.27
78211-009LF	9	.900/22.86	.800/20.32	.050/1.27
78211-010LF	10	1.000/25.40	.900/22.86	.050/1.27
78211-011LF	11	1.100/27.94	1.000/25.40	.050/1.27
78211-012LF	12	1.200/30.48	1.100/27.94	.050/1.27
78211-013LF	13	1.300/33.02	1.200/30.48	.050/1.27
78211-014LF	14	1.400/35.56	1.300/33.02	.050/1.27
78211-015LF	15	1.500/38.10	1.400/35.56	.050/1.27
78211-103LF	3	.300/7.62	.200/5.08	.100/2.54
78211-105LF	5	.500/12.70	.400/10.16	.100/2.54
78211-106LF	6	.600/15.24	.500/12.70	.100/2.54

mat'l. code SEE NOTE 1				surface <input checked="" type="checkbox"/>		tolerance		projection		product family PV HOUSINGS	
ltr	ecr no	dr	date	tolerances unless otherwise specified						title	
K				angles	linear	.XX+.01/.X+.3		INCH/MM		MINI LATCH HOUSING SR	
						.XXX+.005/.XX+.13				POLARIZED .100 [2.54] CC	
				0'±2"		XXXX+.0020/.XXX+.051		scale 1:1		dwg no	
				dr	M. FETROW	1989-07-12					sheet 2 of 2
				engr	H. SUNDY	1989-07-12					size
				chr	H. SUNDY	1989-07-12					A3
				appd	H. SUNDY	1989-07-12					type
sheet index		revision sheet								Product Customer Drawing	