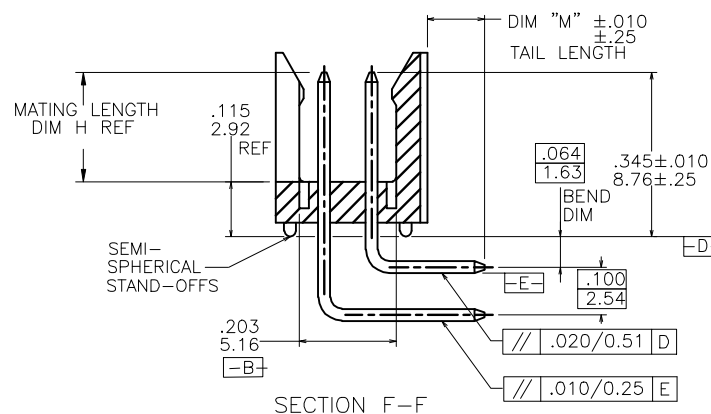
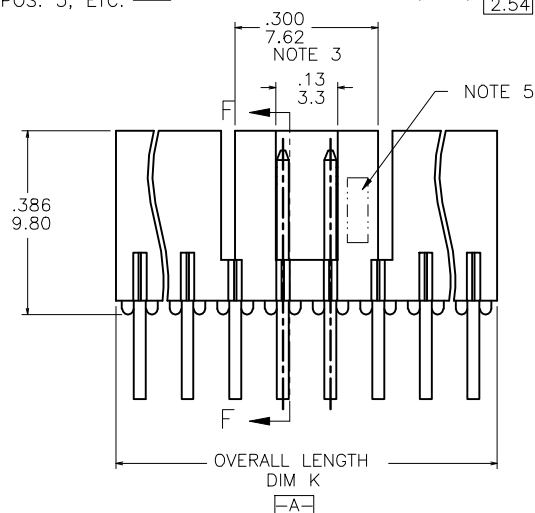
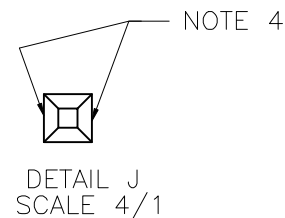
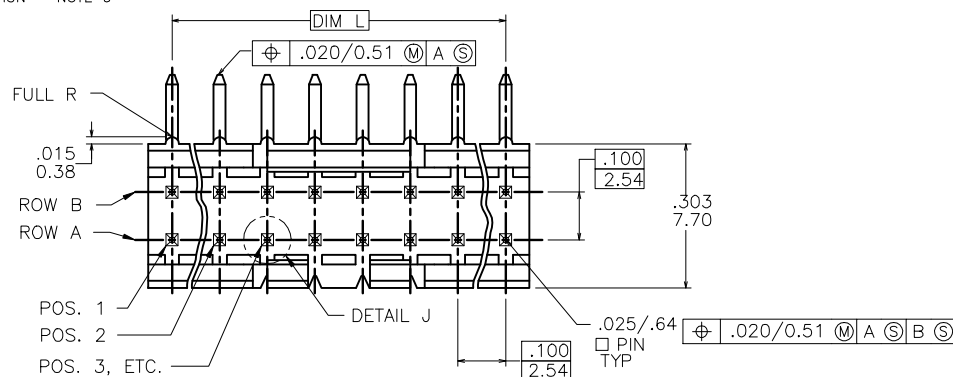



LEAD FREE OPTION - NOTE 8, 9, 10  
- CUSTOMER SPECIALS - NOTE 7  
- TUBE PACKAGING OPTION - NOTE 6  
NO. OF POSITIONS  
SEE TABLE  
- PIN PLATING  
- BASE P/N



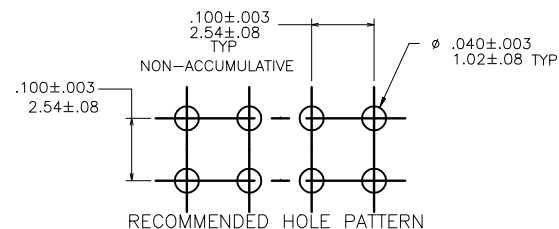
mat'l code				surface ISO 1302 ✓		tolerance ISO 406 ISO 1101		projection 		product family HEADER			
tr ecn no dr date				tolerances unless otherwise specified						title			
L V12717 GIP 11/16/01				angles		.XX1.01/XX1.03		INCH/MM		FRICTION LATCH HEADER			
M V03-0352 GJP 03/25/03				linear		.XXX1.006/XXX1.03				DOUBLE ROW, R/A			
N M05-0134 ERE 06/15/05 0'±2"						.XXX11.0020/XXX10.05		scale 3:1					
P M06-0256 ERE 9/07/06 dr				S.ROYER		01/21/94				dwg no sheet 1 of 2 size			
R M08-0023 MHT 1/28/08 engr				L.FYE		01/21/94				78207 A.			
S M08-0291 MHT 10/08/08 chr				L.FYE		01/21/94							
T M09-0009 MHT 1/19/09 appd				L.FYE		01/21/94				type Product Customer Drawing			
sheet index		revision sheet		T T		1 2							

PRODUCT NUMBER	NO OF POS	MATING LENGTH DIM H	OVERALL LENGTH DIM K	DIM L	TAIL LENGTH DIM "M"
78207-X06	2 X 3	.230/5.84	.300/7.62	.200/5.08	.120/3.05
↑ -X08	2 X 4	.230/5.84	.400/10.16	.300/7.62	↑
-X10	2 X 5	.230/5.84	.500/12.70	.400/10.16	
-X12	2 X 6	.230/5.84	.600/15.24	.500/12.70	
-X14	2 X 7	.230/5.84	.700/17.78	.600/15.24	
-X16	2 X 8	.230/5.84	.800/20.32	.700/17.78	
-X18	2 X 9	.230/5.84	.900/22.86	.800/20.32	
-X18A	2 X 9	.210/5.33	.900/22.86	.800/20.32	
-X20	2 X 10	.230/5.84	1.000/25.40	.900/22.86	
-X22	2 X 11	.230/5.84	1.100/27.94	1.000/25.40	
-X24	2 X 12	.230/5.84	1.200/30.48	1.100/27.94	
-X26	2 X 13	.230/5.84	1.300/33.02	1.200/30.48	
↓ -X28	2 X 14	.230/5.84	1.400/35.56	1.300/33.02	↓
78207-X30	2 X 15	.230/5.84	1.500/38.10	1.400/35.56	.120/3.05
78207-X32 THRU 78207-X72		U N A V A I L A B L E			
78207-X80	2 X 4	.230/5.84	.400/10.16	.300/7.62	.100/2.54

NOTE 7

#### NOTES:

- MOLDING MAT'L: GLASS REINFORCED PCT OR MINERAL FILLED LCP, COLOR: BLACK  
FLAME RETARDANT PER UL 94 V-0  
MAXIMUM OPERATING TEMPERATURE: 130° C.
- PIN MATERIAL: 3/4 HD PHOS. BRZ.
- NO SLOTS ON 2 X 5 POSITION OR SMALLER PRODUCT. THE CENTER KEY SLOT WILL BE ON ALL HEADERS REGARDLESS OF SIZE.
- TWO NON-CRITICAL SIDES OF PIN TIP NOT PLATED, BOTH ENDS.
- COMPANY LOGO MAY APPEAR IN THIS AREA.
- "T" ATTACHED TO THE P/N INDICATES PARTS ARE TO BE PACKAGED IN TUBES.
- CUSTOMER SPECIAL -- "A" SUFFIX INDICATES 0.210/5.33 MATING LENGTH.
- ADD "HLF" SUFFIX AT THE END OF PART NUMBER FOR LEAD FREE OPTION, NOT AVAILABLE FOR -5YY, -5YYH, -6YY & -6YYH.
- PART NUMBERS WITH "H" SUFFIX WILL WITHSTAND EXPOSURE TO 260°C PEAK TEMPERATURE FOR 20 SECONDS IN WAVE SOLDER, INFRA-RED OR VAPOR PHASE SOLDER PROCESS.
- PART NUMBERS WITHOUT "H" SUFFIX WILL WITHSTAND EXPOSURE TO 260°C PEAK TEMPERATURE FOR WAVE SOLDER PROCESS.
- THIS PRODUCT MEETS EUROPEAN UNION DIRECTIVES AND OTHER COUNTRY REGULATION AS DESCRIBED IN GS-22-008.
- PLATING OPTIONS:  
MAY BE EITHER GOLD OR GXT PLATED AT MANUFACTURER'S OPTION.
- "THIS PRODUCT HAS 100% TIN PLATING IN THE INTERFACE AND HAS NOT BEEN TESTED FOR WHISKER GROWTH IN ALL INTERCONNECT ENVIRONMENTS."



mat'l code				surface ISO 1902	tolerance ISO 406 ISO 1101	projection	product family HEADER
ltr	ec'n no	dr	date	tolerances unless otherwise specified		INCH/MM	title FRICTION LATCH HEADER DOUBLE ROW, R/A
T				angles	linear		
						scale 3:1	dwg no
				dr	S.ROYER 01/21/94	FCJ	sheet 2 of 2 size
				engr	L.FYE 01/21/94		78207 A3
				chr	L.FYE 01/21/94		
				appd	L.FYE 01/21/94		
sheet index	revision sheet						type Product Customer Drawing

form A3