

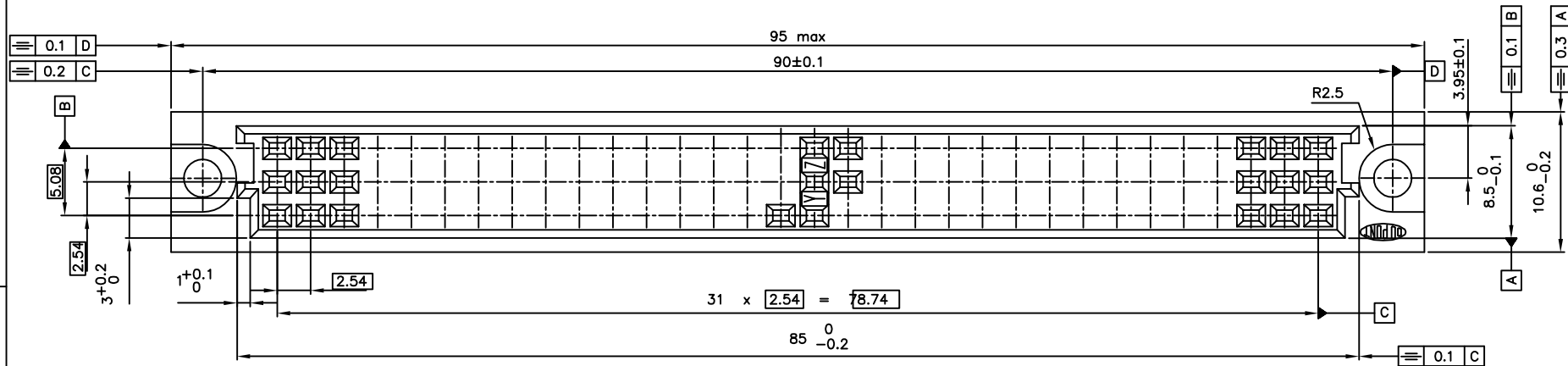
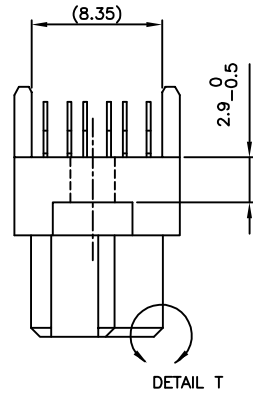
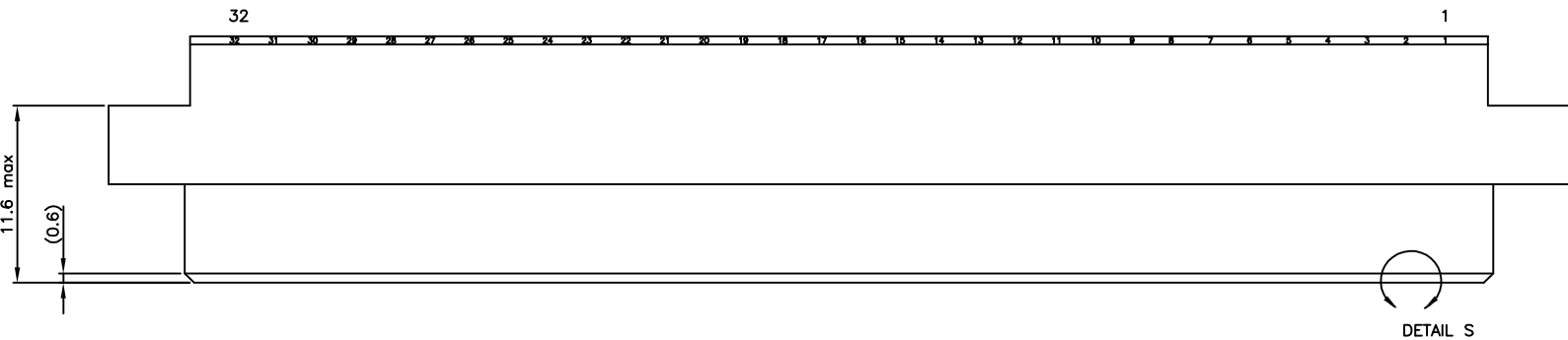
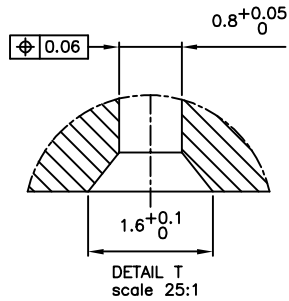
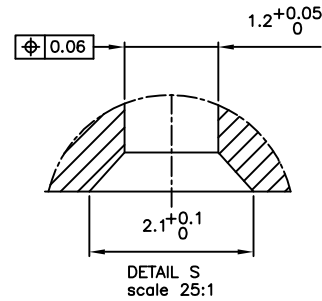
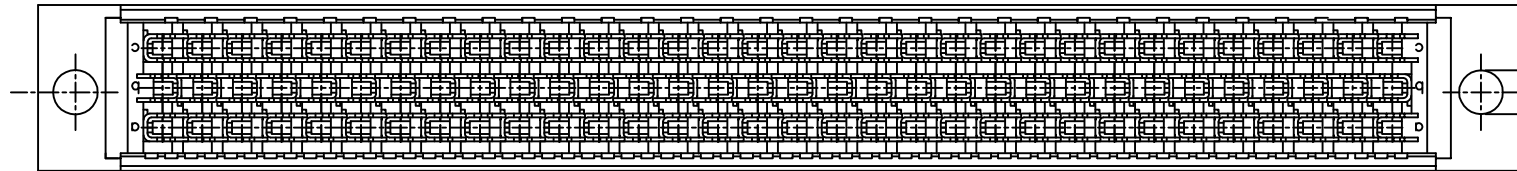


FCIconnect.com

Copyright FCI


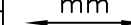

PRODUCT NR	ROW	1	2	3	4	5	6	7	8	9	10	11	12	13	14	15	16	17	18	19	20	21	22	23	24	25	26	27	28	29	30	31	32
	a																																
	b																																
77345-2YZ	a	X	X	X	X	X	X	X	X	X	X	X	X	X	X	X	X	X	X	X	X	X	X	X	X	X	X	X	X	X	X	X	X
	b	X	X	X	X	X	X	X	X	X	X	X	X	X	X	X	X	X	X	X	X	X	X	X	X	X	X	X	X	X	X	X	X
	c	X	X	X	X	X	X	X	X	X	X	X	X	X	X	X	X	X	X	X	X	X	X	X	X	X	X	X	X	X	X	X	X
	d																																
	e																																
77345-4YZ	a	X	X	X	X	X	X	X	X	X	X	X	X	X	X	X	X	X	X	X	X	X	X	X	X	X	X	X	X	X	X	X	X
	b	X	X	X	X	X	X	X	X	X	X	X	X	X	X	X	X	X	X	X	X	X	X	X	X	X	X	X	X	X	X	X	X
	c	X	X	X	X	X	X	X	X	X	X	X	X	X	X	X	X	X	X	X	X	X	X	X	X	X	X	X	X	X	X	X	X
	d																																
	e																																

NOTE:-
1. THE "LF" PRODUCTS MEET EUROPEAN UNION DIRECTIVES AND OTHER COUNTRY REGULATIONS AS DESCRIBED IN GS-22-008.
2. LEAD FREE OR RoHS DIRECTIVE LABELLING TO BE PROVIDED AS PER GS-14-920 FOR LEAD FREE VERSION.



NOTES:
1.MATERIAL HOUSING: THERMOPLASTIC POLYESTER 30% GLASS FILLED, COLOUR: GREY, FLAME RETARDANT PER UL-94-V0
2.MATERIAL CONTACT: PHOSPHOR BRONZE
3.CODE YZ ON LEAD IN SIDE OF HOUSING APPLIES TO PIERCING TERMINAL IN RELATION TO AWG SIZE
4.FOR CABLE APPLICATION SEE TA 301
5.THIS CONNECTOR CAN BE MATED WITH 3 ROW MALE CONNECTOR CONFORM DIN 41612 - TYPE C AND TYPE R
6."LF" SUFFIX TO THE PRODUCT NUMBER FOR LEAD FREE OR RoHS COMPATIBLE PRODUCTS.

77345-X52	30	1.25µm Au min over 3.0 µm Ni	0.1-0.2 mµNi
77345-X51	26	1.25µm Au min over 3.0 µm Ni	0.1-0.2 mµNi
77345-X42	30	2.0µm Au min over 3.0 µm Ni	0.1-0.2 mµNi
77345-X41	26	2.0µm Au min over 3.0 µm Ni	0.1-0.2 mµNi
77345-X22	30	0.5µm Au min over 3.0 µm Ni	0.1-0.2 mµNi
77345-X21	26	0.5µm Au min over 3.0 µm Ni	0.1-0.2 mµNi
77345-X12	30	1.0µm Au min over 3.0 µm Ni	0.1-0.2 mµNi
77345-X11	26	1.0µm Au min over 3.0 µm Ni	0.1-0.2 mµNi
77345-X02	30	3.0µm Au min over 3.0 µm Ni	0.1-0.2 mµNi
77345-X01	26	3.0µm Au min over 3.0 µm Ni	0.1-0.2 mµNi
PRODUCT CODE YZ	AWG SIZE	CONTACT AREA	PIERCING AREA
		PLATING	

mat'l. code SEE NOTE				surface ISO 1302 ✓		tolerance ISO 406 ISO 1101		projection 		product family BACKPANEL																																																																																																																																																																																																																																																																																																																																																																																																																																																																																																																																																																																																																																																																																																																																																																																																																																																																																																																																																																																																																																																																																																																																																																																																																																																																																																																																																										
ltr	ecn no	dr	date	tolerances unless otherwise specified							title CABLE CONNECTOR ASSY 3x32 POS.																																																																																																																																																																																																																																																																																																																																																																																																																																																																																																																																																																																																																																																																																																																																																																																																																																																																																																																																																																																																																																																																																																																																																																																																																																																																																																																																																									
A	H20185	MVI	1992-03-31	angles	linear																																																																																																																																																																																																																																																																																																																																																																																																																																																																																																																																																																																																																																																																																																																																																																																																																																																																																																																																																																																																																																																																																																																																																																																																																																																																																																																																																															
B	H20421	MVI	1992-08-16																																																																																																																																																																																																																																																																																																																																																																																																																																																																																																																																																																																																																																																																																																																																																																																																																																																																																																																																																																																																																																																																																																																																																																																																																																																																																																																																																																	
C	H80553	DDB	1998-08-06																																																																																																																																																																																																																																																																																																																																																																																																																																																																																																																																																																																																																																																																																																																																																																																																																																																																																																																																																																																																																																																																																																																																																																																																																																																																																																																																																																	
D	I05-0138	MINI	2005-08-08	dr	M.VISSCHERS		1992-03-31			dwg no 77345																																																																																																																																																																																																																																																																																																																																																																																																																																																																																																																																																																																																																																																																																																																																																																																																																																																																																																																																																																																																																																																																																																																																																																																																																																																																																																																																																										
E	I06-0082	MINI	2006-06-01	enrg	M.LOMAN		1998-05-08																																																																																																																																																																																																																																																																																																																																																																																																																																																																																																																																																																																																																																																																																																																																																																																																																																																																																																																																																																																																																																																																																																																																																																																																																																																																																																																																																													
				chr	RAKHEE GEORGE		2006-06-01			type Product Customer Drawing																																																																																																																																																																																																																																																																																																																																																																																																																																																																																																																																																																																																																																																																																																																																																																																																																																																																																																																																																																																																																																																																																																																																																																																																																																																																																																																																																										
				appd	RAKHEE GEORGE		2006-06-01																																																																																																																																																																																																																																																																																																																																																																																																																																																																																																																																																																																																																																																																																																																																																																																																																																																																																																																																																																																																																																																																																																																																																																																																																																																																																																																																																													
sheet index		revision sheet		E	1																																																																																																																																																																																																																																																																																																																																																																																																																																																																																																																																																																																																																																																																																																																																																																																																																																																																																																																																																																																																																																																																																																																																																																																																																																																																																																																																																															