

PRODUCT NUMBER  
77315-YXX-XXLF

WHEN REQUIRED, ADD SUFFIX LETTER "LF"  
INDICATES THE PRODUCT IS RoHS  
COMPATIBLE, SEE NOTE 7

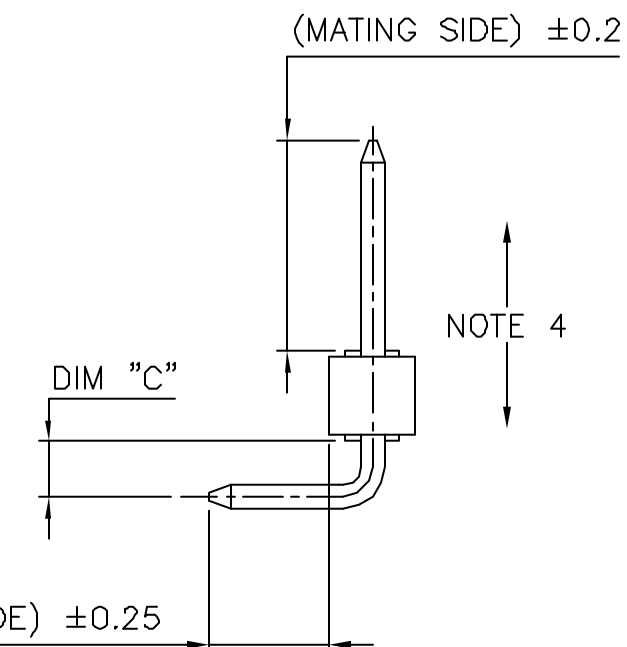
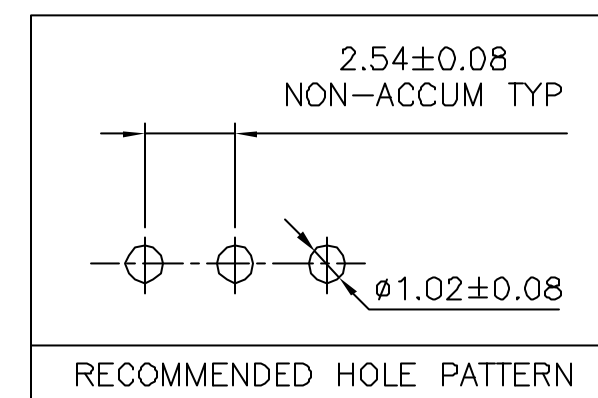
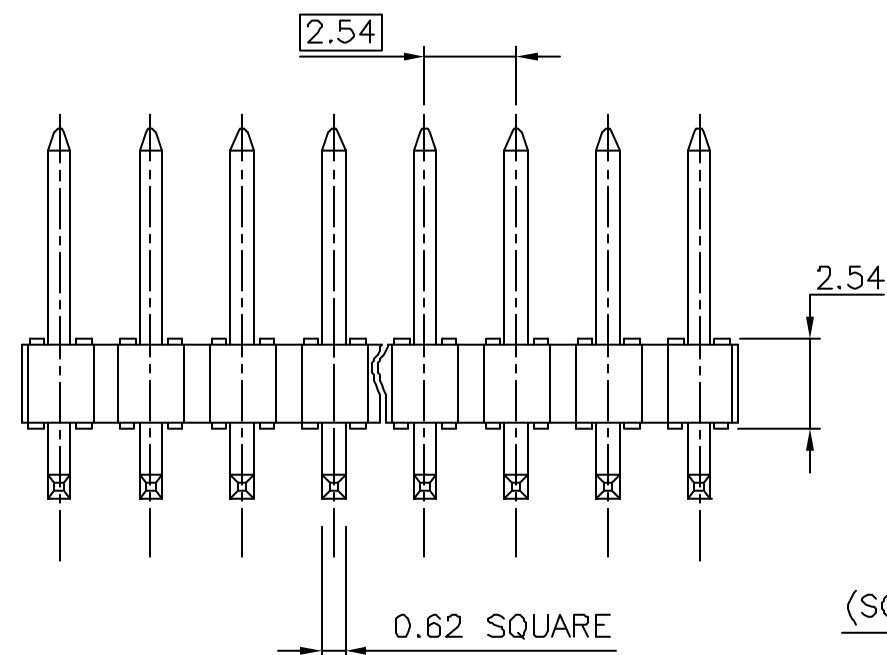
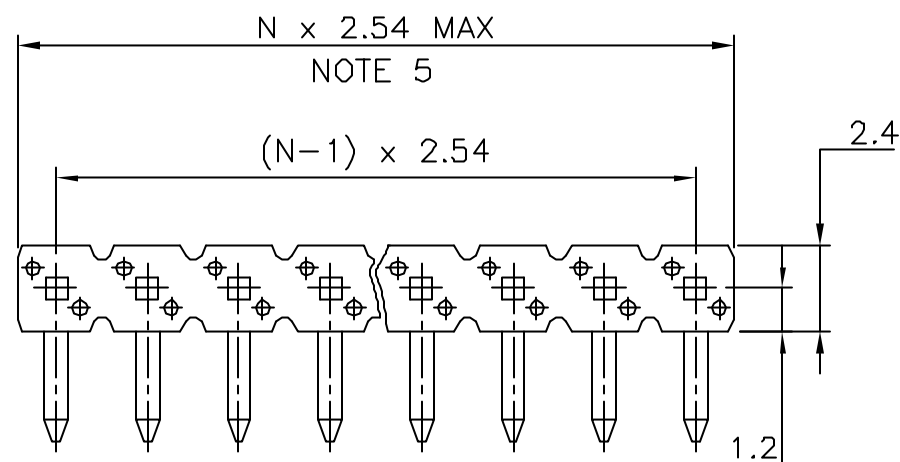
TOTAL NB OF POSITIONS 02 TO 36



PIN STYLE SEE SHEET 2

PLATING SEE SHEET 2

NOTES:

1. HOUSING MAT'L : HIGH TEMPERATURE THERMOPLASTIC. UL94V-0 COLOR: BLACK
2. PIN MATERIAL : PHOSPHOR BRONZE
3. PRODUCT PACKAGED IN POLY BAGS.
4. 9N MIN RETENTION IN EITHER DIRECTION
5. TO DETERMINE DIMENSIONS :  
N = NUMBER OF POSITIONS PER ROW  
EXAMPLE : 8 POS  $N \times 2.54 = 20.32\text{mm}$
6. UNDERPLATING :  $1.27\mu\text{m}$  Ni MIN
7. RoHS COMPATIBLE PRODUCT SPECIFICATIONS
  - a - PLATING:
    - "LF" MEANS THE PRODUCT IS LEAD-FREE,  $2\mu\text{m}$  MINIMUM MATTE TIN OVER  $1.27\mu\text{m}$  MINIMUM NICKEL UNDERPLATE.
  - b - MANUFACTURING PROCESS COMPATIBILITY
    - THE HOUSING WILL WITHSTAND EXPOSURE TO  $260^{\circ}\text{C} \pm 5^{\circ}\text{C}$  SOLDER BATH TEMPERATURE FOR 5 SECONDS IN A WAVE SOLDER APPLICATION WITH A 1.6mm MIN THICK CIRCUIT BOARD.
  - c - LABELING:
    - MEETS PACKAGING SPECS AS PER GS-14-920
  - d - LEGAL STATEMENT: SEE GS-22-008



mat'l. code SEE NOTES				surface ISO 1302 ✓				tolerance ISO 406 ISO 1101				projection 				product family BERGSTIK																																																																																																																																																																																																																																																																																																																																																																																																																																																																																																																																																																																																																																																																																																																																																																																																																																																																																																																																																																																																																																																																																																																																																																																																																																																																																																																																																																																																																																																																																																																																																																																																																																																																																																																																																																																																																																																																																																																																																																																																																																																																																																																																																																																																																																																																																																																																																																																																																																																																																																																																																																																																																																																																																																																																																																																																																																																																																																																																																																																																																																																																																																																																																																																																																																			
ltr				ecn no				dr				date				tolerances unless otherwise specified								title																																																																																																																																																																																																																																																																																																																																																																																																																																																																																																																																																																																																																																																																																																																																																																																																																																																																																																																																																																																																																																																																																																																																																																																																																																																																																																																																																																																																																																																																																																																																																																																																																																																																																																																																																																																																																																																																																																																																																																																																																																																																																																																																																																																																																																																																																																																																																																																																																																																																																																																																																																																																																																																																																																																																																																																																																																																																																																																																																																																																																																																																																																																																																																																																																											
AC				F08-0242				LMU				08.11.03				angles				linear				<div><div>.X ±0.3</div><div>.XX ±0.15</div><div>.XXX ±0.05</div></div>				<div>mm</div>				UNSHR.HEADER RA SR TMT																																																																																																																																																																																																																																																																																																																																																																																																																																																																																																																																																																																																																																																																																																																																																																																																																																																																																																																																																																																																																																																																																																																																																																																																																																																																																																																																																																																																																																																																																																																																																																																																																																																																																																																																																																																																																																																																																																																																																																																																																																																																																																																																																																																																																																																																																																																																																																																																																																																																																																																																																																																																																																																																																																																																																																																																																																																																																																																																																																																																																																																																																																																																																																																																																			
W				F04-0167				JOC				04.04.05												scale 5:1				dwg no																																																																																																																																																																																																																																																																																																																																																																																																																																																																																																																																																																																																																																																																																																																																																																																																																																																																																																																																																																																																																																																																																																																																																																																																																																																																																																																																																																																																																																																																																																																																																																																																																																																																																																																																																																																																																																																																																																																																																																																																																																																																																																																																																																																																																																																																																																																																																																																																																																																																																																																																																																																																																																																																																																																																																																																																																																																																																																																																																																																																																																																																																																																																																																																																																							
X				F04-0362				LMU				04.11.29				dr				D.LE				01.01.24								sheet 1 of 2								size																																																																																																																																																																																																																																																																																																																																																																																																																																																																																																																																																																																																																																																																																																																																																																																																																																																																																																																																																																																																																																																																																																																																																																																																																																																																																																																																																																																																																																																																																																																																																																																																																																																																																																																																																																																																																																																																																																																																																																																																																																																																																																																																																																																																																																																																																																																																																																																																																																																																																																																																																																																																																																																																																																																																																																																																																																																																																																																																																																																																																																																																																																																																																																																																											
Y				F05-0221				LMU				05.07.13				enr				JM.C				01.01.24								77315								A3																																																																																																																																																																																																																																																																																																																																																																																																																																																																																																																																																																																																																																																																																																																																																																																																																																																																																																																																																																																																																																																																																																																																																																																																																																																																																																																																																																																																																																																																																																																																																																																																																																																																																																																																																																																																																																																																																																																																																																																																																																																																																																																																																																																																																																																																																																																																																																																																																																																																																																																																																																																																																																																																																																																																																																																																																																																																																																																																																																																																																																																																																																																																																																																																											
AA				F06-0194				LMU				06.06.09				chr				JM.C				01.01.24								type								CUSTOMER				Drawing																																																																																																																																																																																																																																																																																																																																																																																																																																																																																																																																																																																																																																																																																																																																																																																																																																																																																																																																																																																																																																																																																																																																																																																																																																																																																																																																																																																																																																																																																																																																																																																																																																																																																																																																																																																																																																																																																																																																																																																																																																																																																																																																																																																																																																																																																																																																																																																																																																																																																																																																																																																																																																																																																																																																																																																																																																																																																																																																																																																																																																																																																																																																																																																																							
AB				F08-0146				RTR				08.03.31				appd				JF.N				01.01.24																																																																																																																																																																																																																																																																																																																																																																																																																																																																																																																																																																																																																																																																																																																																																																																																																																																																																																																																																																																																																																																																																																																																																																																																																																																																																																																																																																																																																																																																																																																																																																																																																																																																																																																																																																																																																																																																																																																																																																																																																																																																																																																																																																																																																																																																																																																																																																																																																																																																																																																																																																																																																																																																																																																																																																																																																																																																																																																																																																																																																																																																																																																																																																																																																								</			

CATALOGUE RANGE				
PLATING	PIN STYLE	MATING	SOLDER	DIM "C"
1/4/8	01	5.72	2.57	1.5
1/4/8	18	5.84	3.05	1.5
1/4/8	24	6.75	2.85	1.5

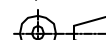


## PLATING

1 = 0.76μm GOLD/GXT ON CONTACT AREA  
3.81μm TIN-LEAD ON TAIL

4 = 3.81μm TIN-LEAD ON CONTACT AREA  
AND ON TAIL

8 = 0.38 $\mu$ m GOLD/GXT ON CONTACT AREA  
3.81 $\mu$ m TIN-LEAD ON TAIL

- WHEN "LF" IS REQUIRED, 2μm MATTE TIN OVER 1.27μm MIN NICKEL IS PROVIDED INSTEAD OF TIN-LEAD

mat'l. code SEE NOTES				surface ISO 1302 ✓		tolerance ISO 406 ISO 1101		projection 		product family BERGSTIK							
Ltr	ecn no	dr	date	tolerances unless otherwise specified						title UNSHR.HEADER RA SR TMT							
U	F20563	JCO	02.10.16	angles	linear	x ±0.3		mm									
V	F04-0362	LMU	04.11.29			.XX ±0.15		↔									
W	F05-0221	LMU	05.07.13			.XXX ±0.05		scale 5:1									
X	F06-0194	LMU	06.06.09	dr	D.LE		01.01.24			dwg no		sheet 2 of 2			size		
Y	F08-0148	RTR	08.03.31	engr	JM.C		01.01.24			77315		A3					
AA	F08-0242	LMU	08.11.03	chr	JM.C		01.01.24			type		CUSTOMER			Drawing		
				appd	JF.N		01.01.24										
sheet index		revision sheet															