

PRODUCT NUMBER

77314-YXXXLF

WHEN REQUIRED, ADD SUFFIX LETTER "LF"  
INDICATES THE PRODUCT IS RoHS  
COMPATIBLE, SEE NOTE 8

OPTION LETTER  
SEE NOTE 7 & SHEET 9

PIN STYLE SEE SHEET 2 TO 8

PLATING SEE SHEET 2

NOTES:

- HOUSING MAT'L : HIGH TEMPERATURE THERMOPLASTIC. UL94V-0 COLOR: BLACK
- PIN MATERIAL : PHOSPHOR BRONZE
- PRODUCT PACKAGED IN POLY BAGS.
- 9N MIN RETENTION IN EITHER DIRECTION
- TO DETERMINE DIMENSIONS :  
N = NUMBER OF POSITIONS PER ROW  
EXAMPLE : 8 POS  $N \times 2.54 = 20.32\text{mm}$
- UNDERPLATING :  $1.27\mu\text{m}$  Ni MIN
- RETENTION OPTION "R", OMIT FROM PRODUCT NUMBER IF FEATURE IS NOT APPLICABLE
- RoHS COMPATIBLE PRODUCT SPECIFICATIONS

a - PLATING:

- "LF" MEANS THE PRODUCT IS LEAD-FREE,  
 $2\mu\text{m}$  MINIMUM MATTE TIN OVER  $1.27\mu\text{m}$   
MINIMUM NICKEL UNDERPLATE.

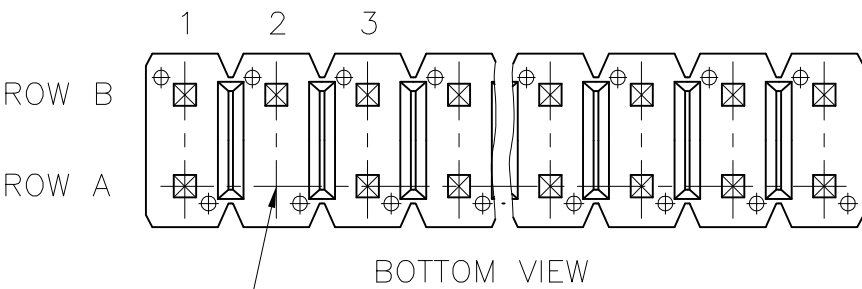
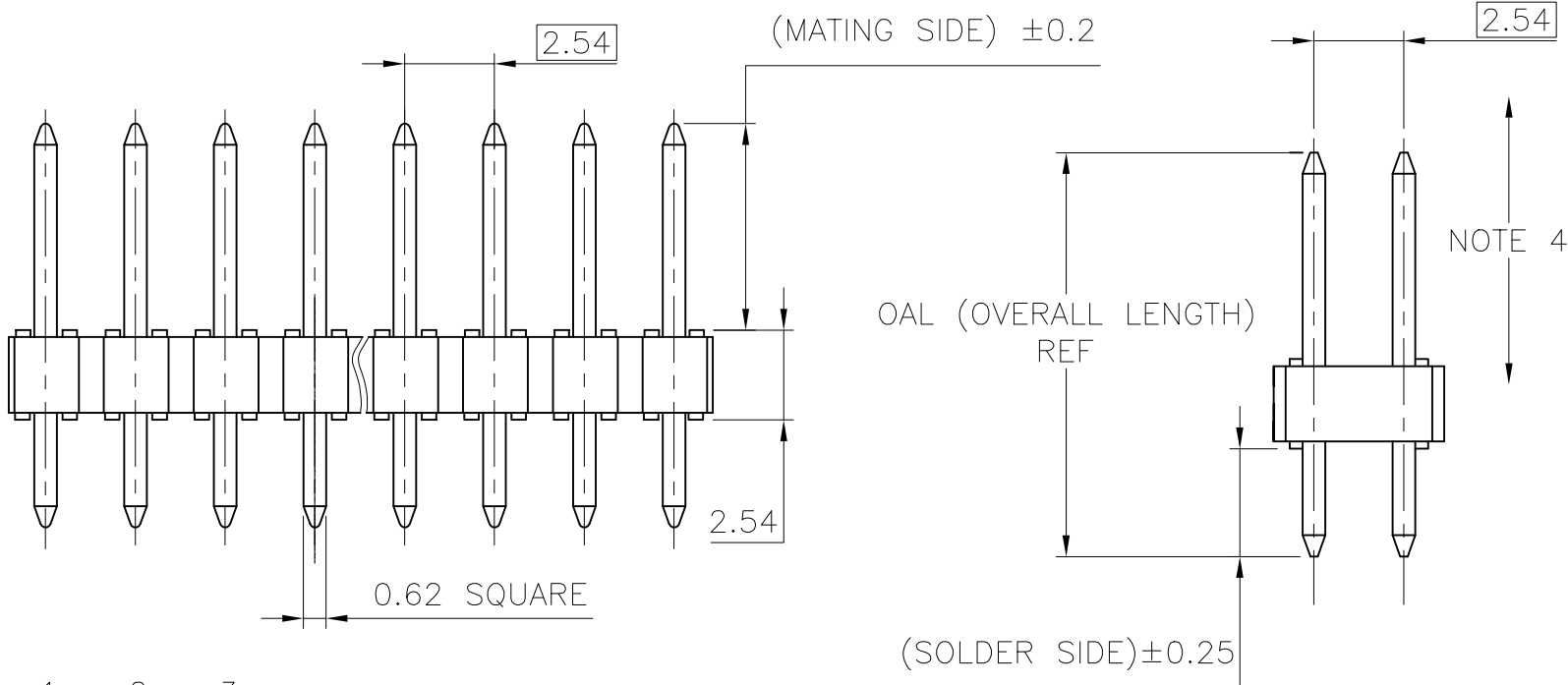
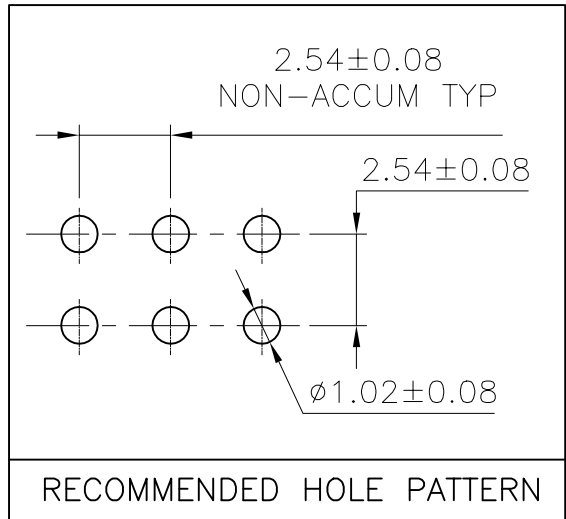
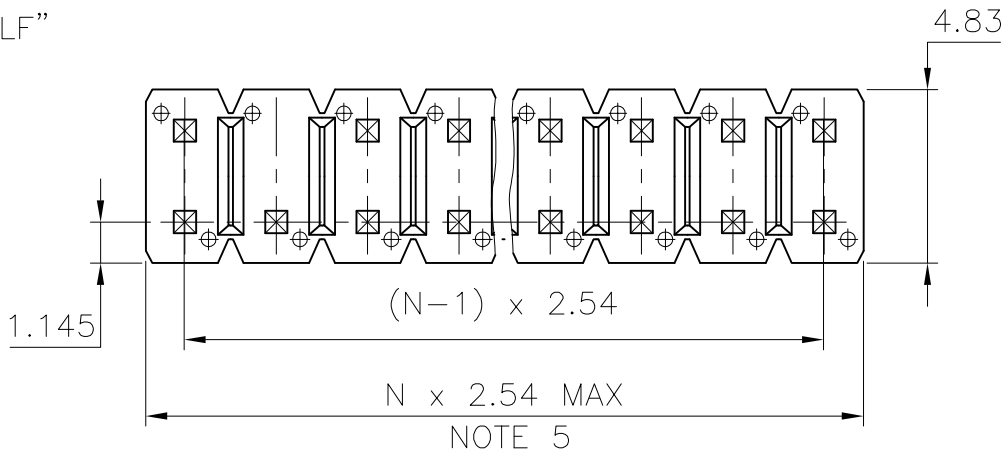
b - MANUFACTURING PROCESS COMPATIBILITY

- THE HOUSING WILL WITHSTAND EXPOSURE TO  
 $260^\circ\text{C} \pm 5^\circ\text{C}$  SOLDER BATH TEMPERATURE FOR  
5 SECONDS IN A WAVE SOLDER APPLICATION  
WITH A 1.6mm MIN THICK CIRCUIT BOARD.

c - LABELING:

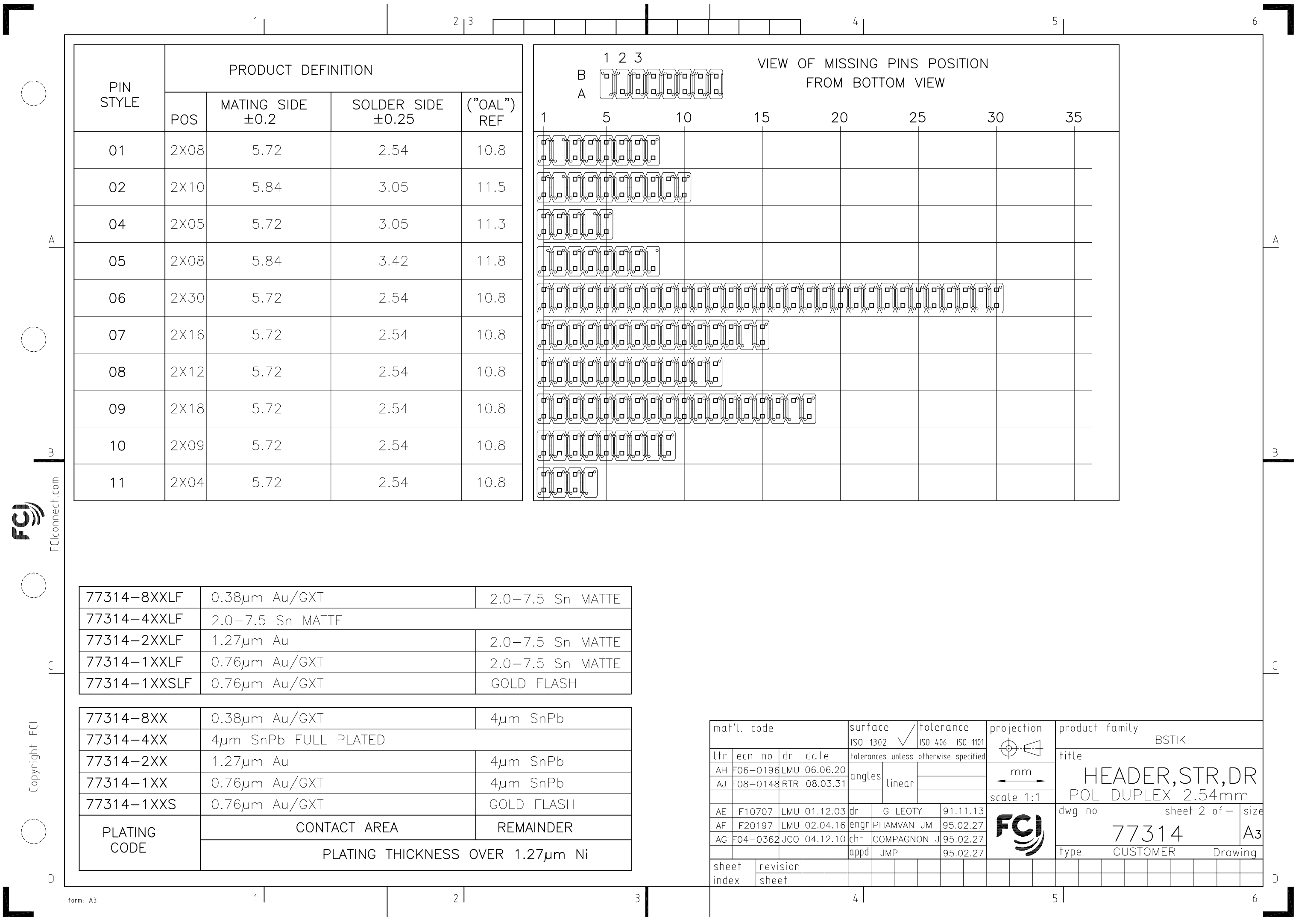
- MEETS PACKAGING SPECS AS PER GS-14-920

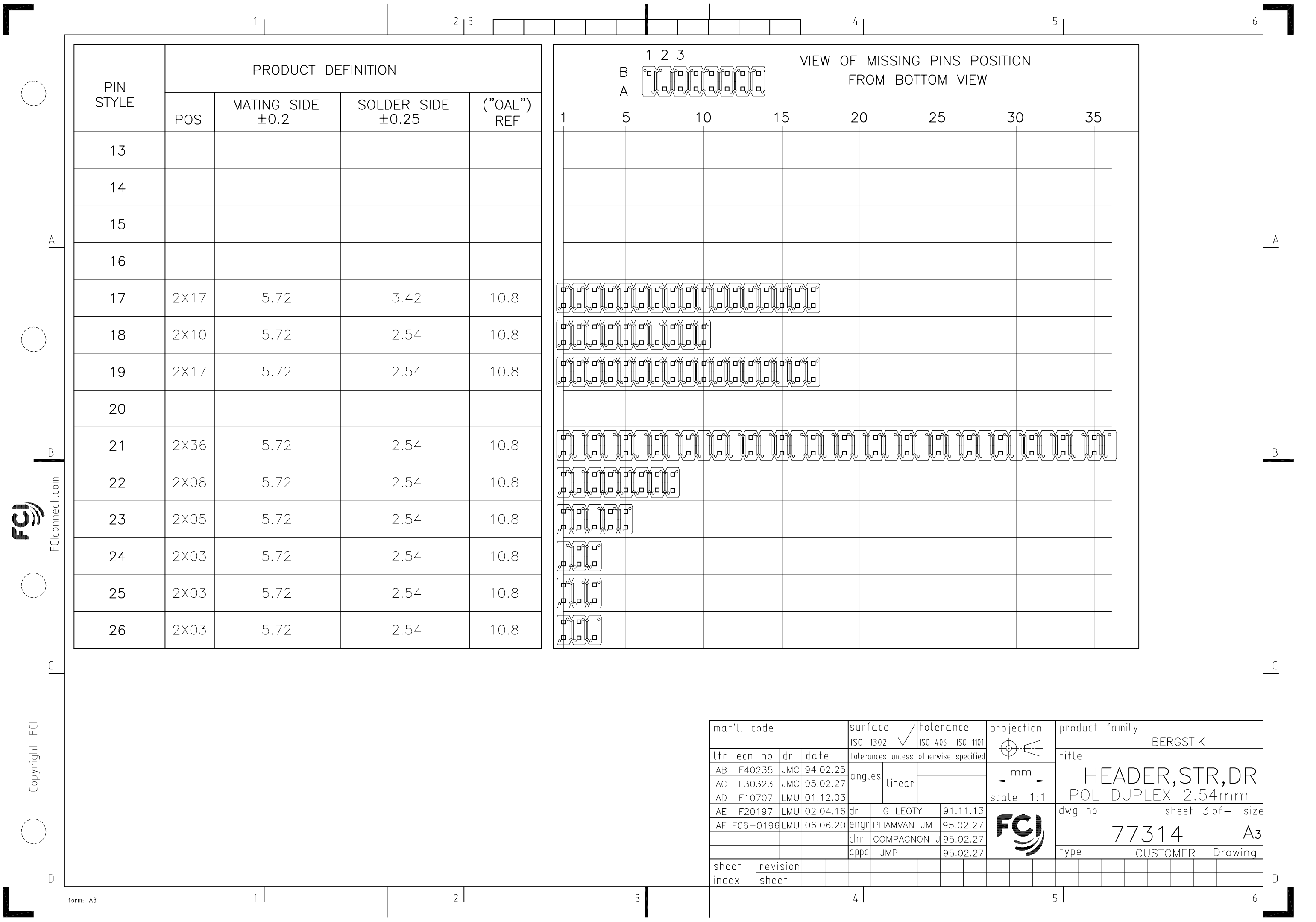
d - LEGAL STATEMENT: SEE GS-22-008



DELETED PIN  
EXAMPLE

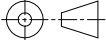

mat'l. code SEE P/N				surface ISO 1302	tolerance ISO 406 ISO 1101	projection	product family BSTIK			
ltr	ecn no	dr	date	tolerances unless	otherwise specified	mm	title HEADER STR,DR POL DUPLEX 2.54mm.			
BH	F04-0362	JCO	04.12.10	angles	.X ± 0.3	scale 5:1	dwg no 77314			
BJ	F06-0117	LMU	06.01.30	linear	.XX ± 0.15					
BK	F06-0196	LMU	06.06.20		.XXX ± 0.05					
BL	F08-0148	RTR	08.03.31	dr	G LEOTY	91.11.13	type CUSTOMER			
				enr	J COMPAGNON	95.12.05				
BF	F04-0137	LMU	04.02.12	chr	J COMPAGNON	95.12.05				
BG	F04-0167	JCO	04.04.05	appd	JMC	95.12.05	Drawing			
sheet	revision	BL	AJ	AF	AF	AH				
index	sheet	1	2	3	4	5				

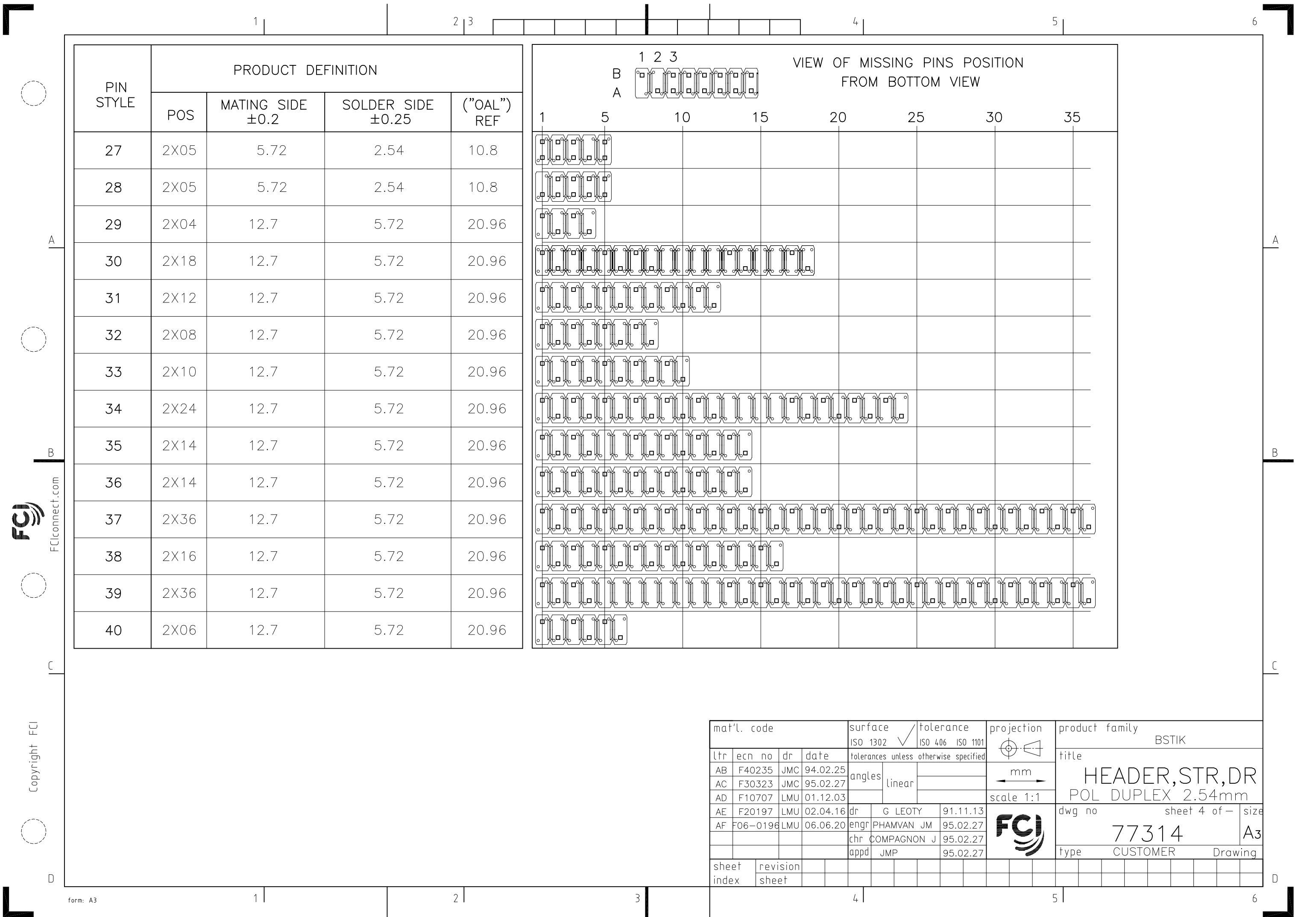


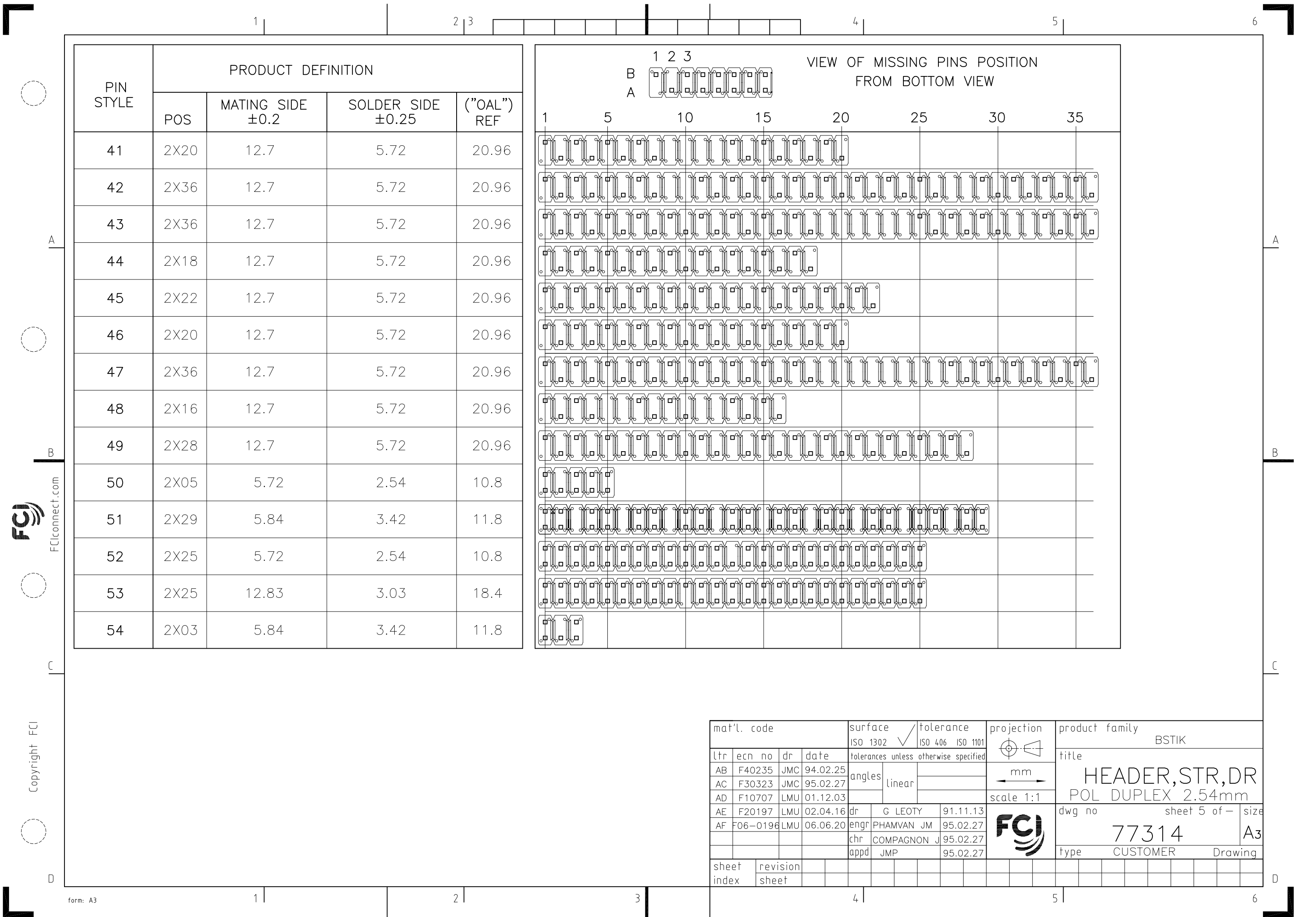


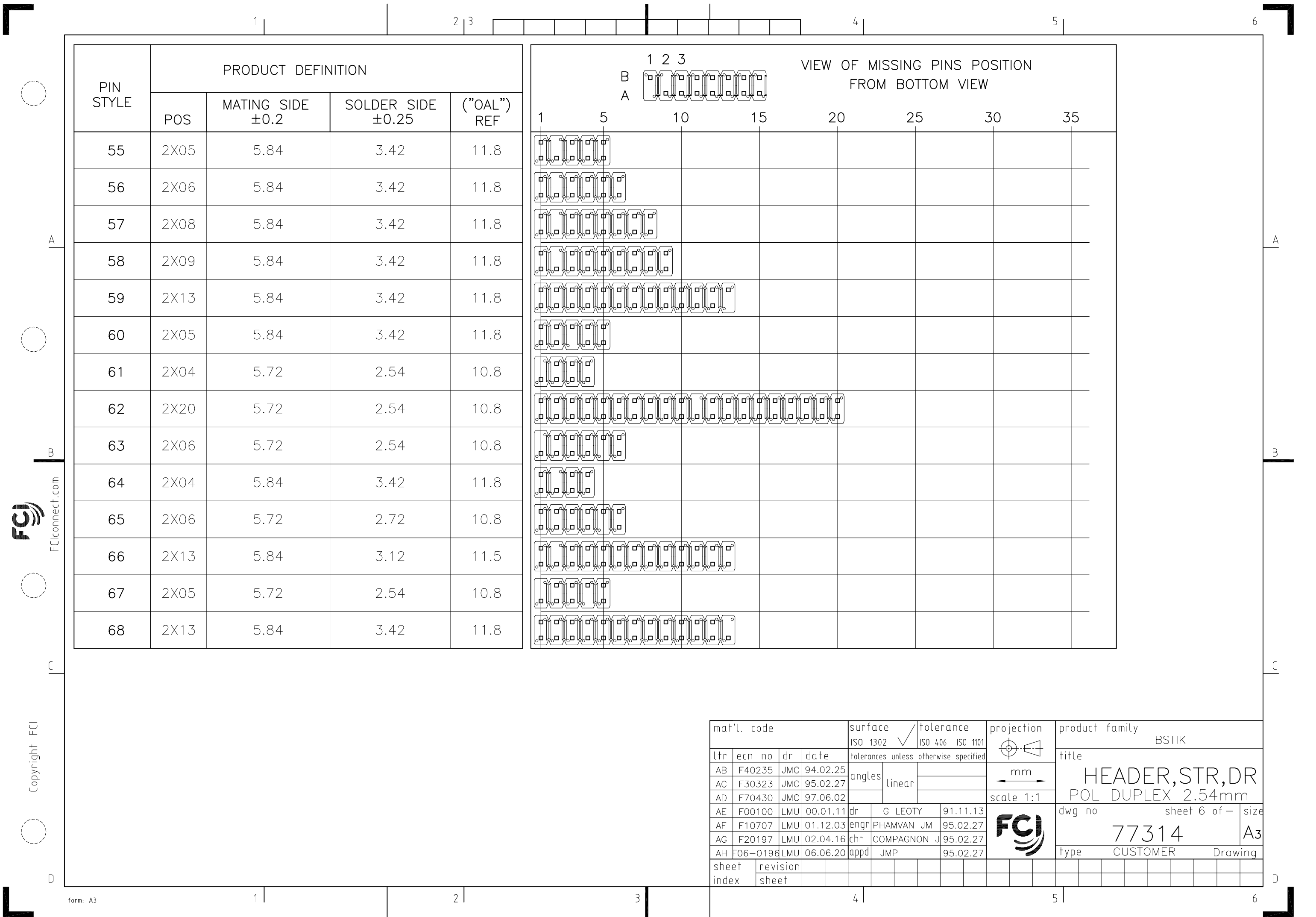
FCIconnect.com




Copyright FCI

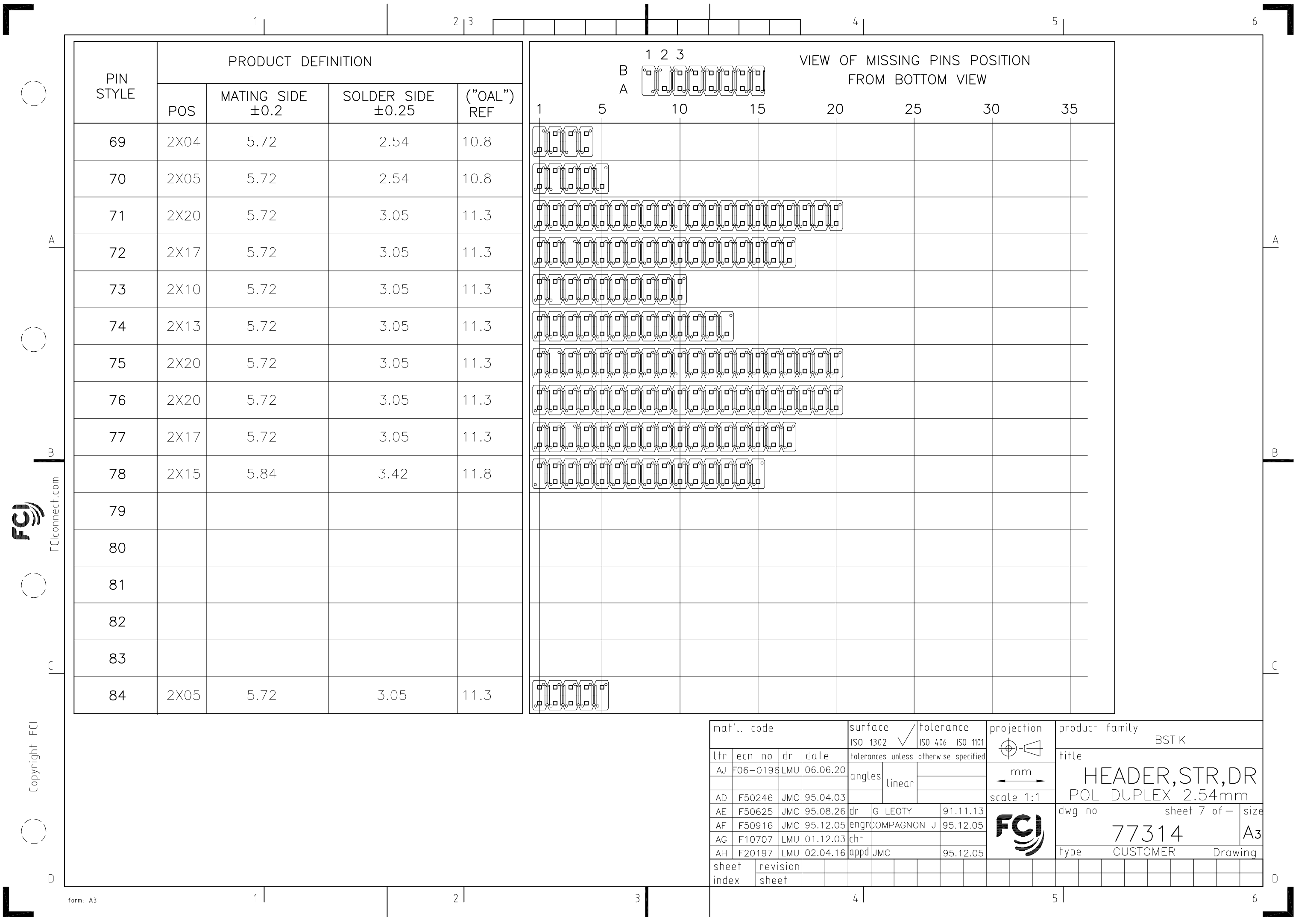
mat'l. code				surface ISO 1302 <input checked="" type="checkbox"/>		tolerance ISO 406 ISO 1101		projection 		product family BERGSTIK																																																																																																																																																																																																																																																																																																																																																																																																																																																																																																																																																																																										
ltr				ecn no		dr	date		tolerances unless				otherwise specified				title																																																																																																																																																																																																																																																																																																																																																																																																																																																																																																																																																																																			
AB				F40235		JMC	94.02.25		angles		linear						HEADER,STR,DR POL DUPLEX 2.54mm																																																																																																																																																																																																																																																																																																																																																																																																																																																																																																																																																																																			
AC				F30323		JMC	95.02.27																																																																																																																																																																																																																																																																																																																																																																																																																																																																																																																																																																																													
AD				F10707		LMU	01.12.03								scale 1:1																																																																																																																																																																																																																																																																																																																																																																																																																																																																																																																																																																																					
AE				F20197		LMU	02.04.16		dr	G LEOTY			91.11.13																																																																																																																																																																																																																																																																																																																																																																																																																																																																																																																																																																																							
AF				F06-0196		LMU	06.06.20		engr	PHAMVAN JM			95.02.27																																																																																																																																																																																																																																																																																																																																																																																																																																																																																																																																																																																							
									chr	COMPAGNON J			95.02.27																																																																																																																																																																																																																																																																																																																																																																																																																																																																																																																																																																																							
									appd	JMP			95.02.27																																																																																																																																																																																																																																																																																																																																																																																																																																																																																																																																																																																							
sheet index		revision sheet																																																																																																																																																																																																																																																																																																																																																																																																																																																																																																																																																																																																		



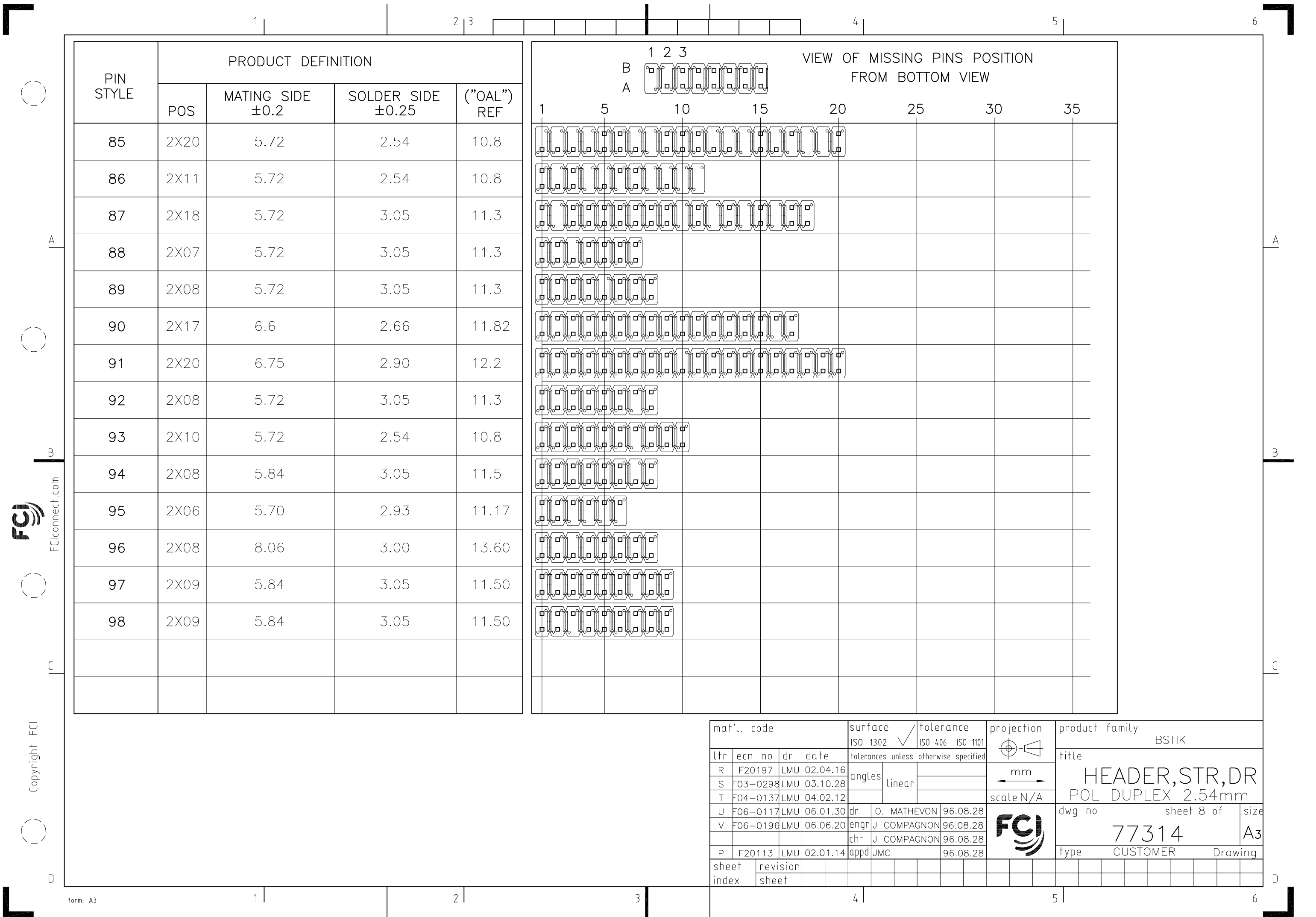




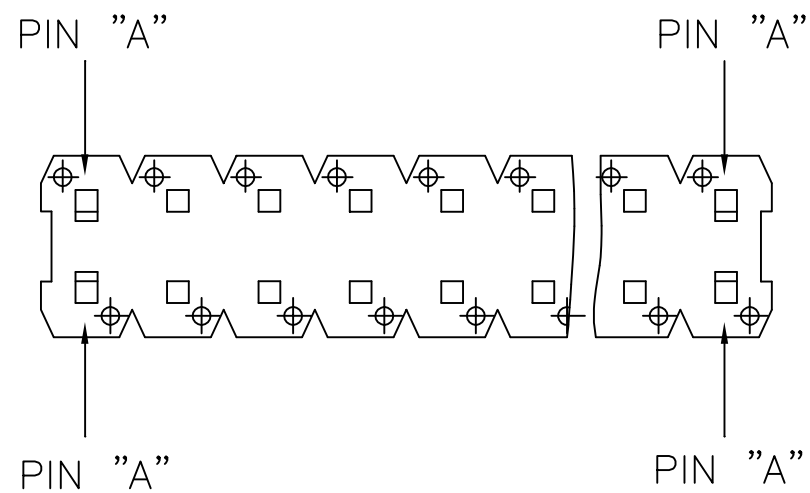
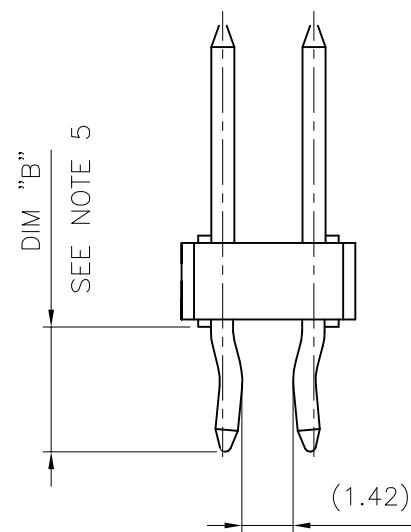
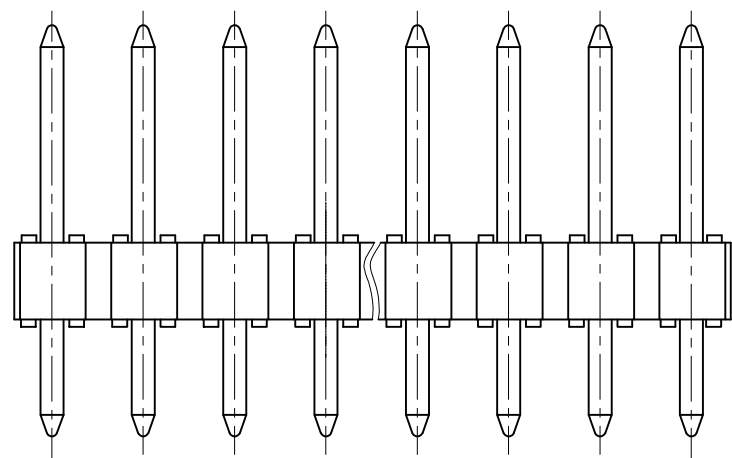
mat'l. code				surface ISO 1302 <input checked="" type="checkbox"/>		tolerance ISO 406 ISO 1101		projection 		product family BSTIK									
ltr	ecn no	dr	date	tolerances unless		otherwise specified				title HEADER,STR,DR POL DUPLEX 2.54mm									
AB	F40235	JMC	94.02.25	angles		linear		mm											
AC	F30323	JMC	95.02.27					scale 1:1											
AD	F70430	JMC	97.06.02																
AE	F00100	LMU	00.01.11	dr	G LEOTY		91.11.13	dwg no		sheet 6 of -				size					
AF	F10707	LMU	01.12.03	enr	PHAMVAN JM		95.02.27	77314						A3					
AG	F20197	LMU	02.04.16	chr	COMPAGNON J		95.02.27	type		CUSTOMER				Drawing					
AH	F06-0196	LMU	06.06.20	appd	JMP		95.02.27												
sheet index		revision sheet																	





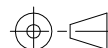







NOTES:

- 1 - PART NUMBER 77314-YXX
- 2 - PINS "A" AND "B" USED FOR RETENTION.
- 3 - DIRECTION OF RETENTION SHOWN BY ARROWS.
- 4 - KINKED LEGS LOCATION CAN BE MOVED IF A PIN IS MISSING.
- 5 - RETENTION VERSION ONLY AVAILABLE WHEN DIM "B" IS BETWEEN 3 AND 3.5mm.
- 6 - 2 AND 3 POSN KINKED HEADER ARE NOT AVAILABLE.
- "R" INDICATES A RETENTION HEADER.  
"T" INDICATES HEADERS PACKED IN TUBES

mat'l. code				surface ISO 1302 ✓		tolerance ISO 406 ISO 1101		projection 		product family BSTIK										
ltr	ecn no	dr	date	tolerances unless otherwise specified					title HEADER,STR,DR POL DUPLEX 2.54mm											
A	F60608	OMA	96.08.28	angles	linear															
B	F60761	JMC	96.10.24																	
C	F10707	LMU	01.12.03					scale N/A	<div><div>dwg no</div><div>77314</div><div>type</div><div>CUSTOMER</div></div> <div><div>sheet 9 of</div><div>A3</div><div>Drawing</div></div>											
D	F06—0196	LMU	06.06.20	dr	J COMPAGNON	95.08.26														
				enr	JMC	95.08.26														
				chr																
				appd	JMC	95.08.26														
sheet index		revision sheet																		