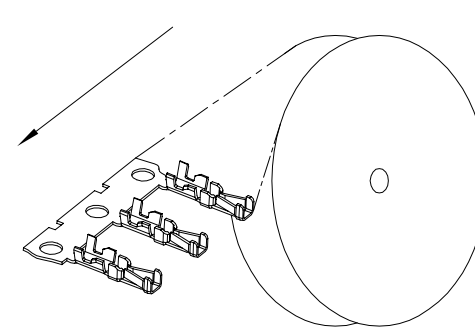
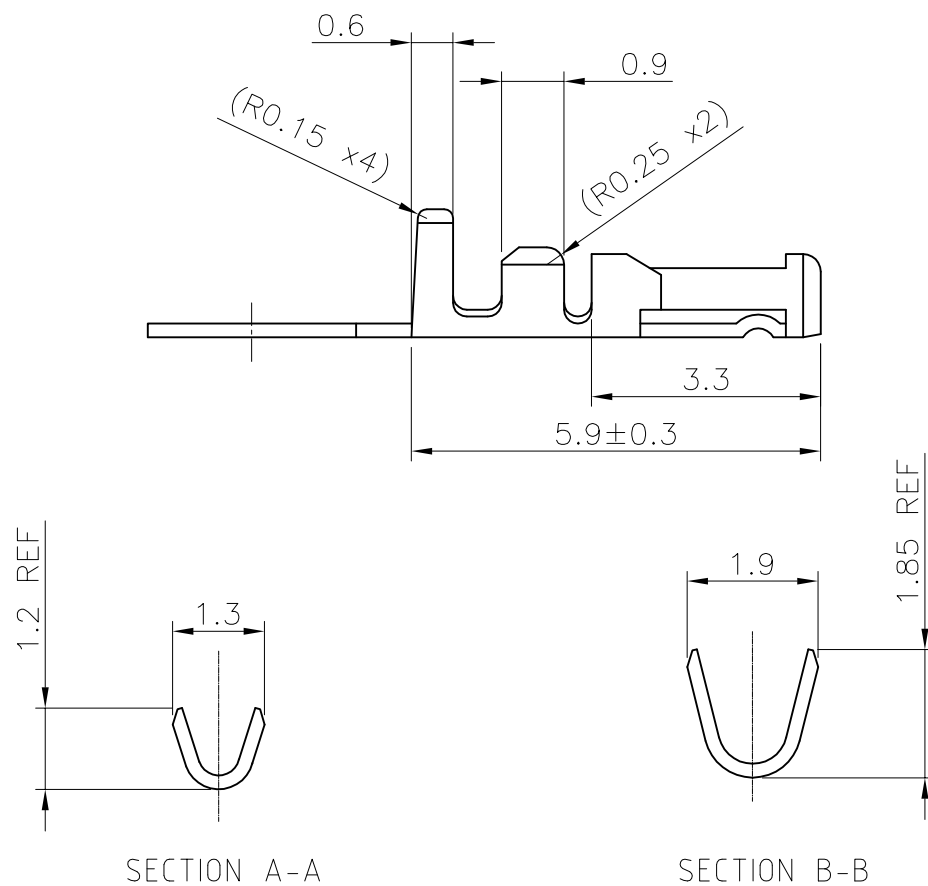
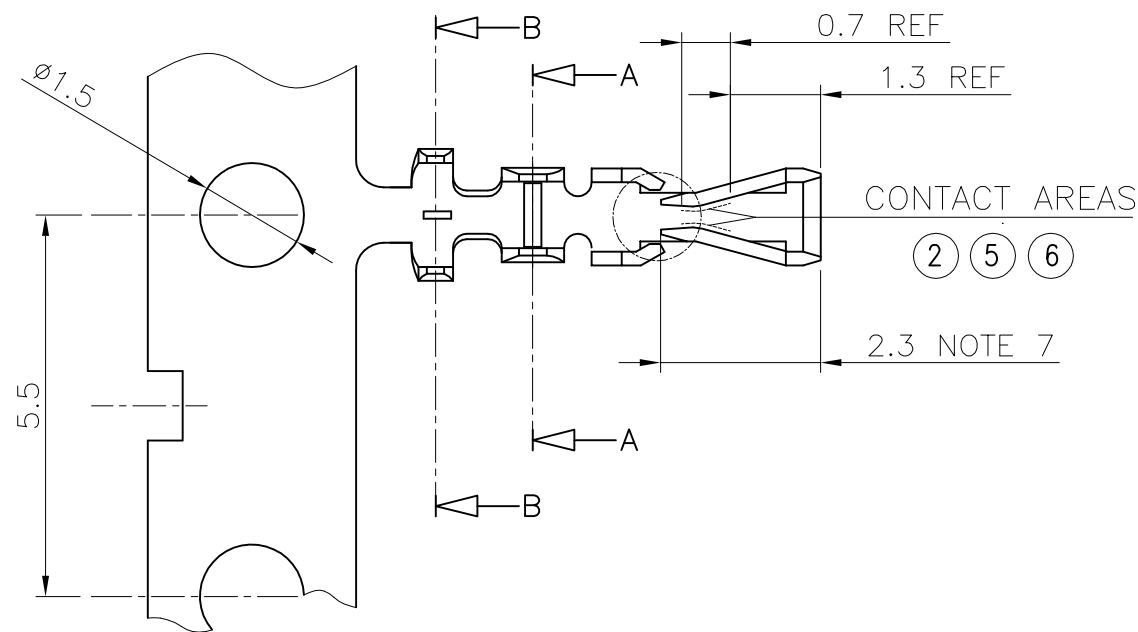
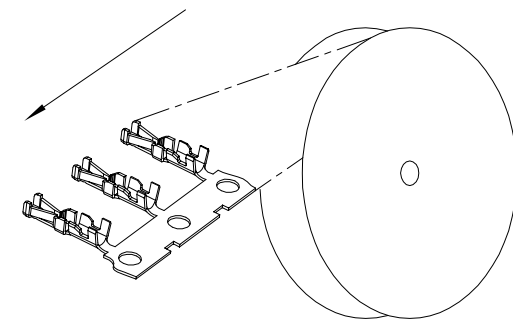


| PRODUCT NO.   | FINISH | REELING DIRECTION |
|---------------|--------|-------------------|
| 77138-001LF   | NOTE 2 | FIG.1             |
| 77138-101LF   | NOTE 6 | FIG.1             |
| 77138-201LF   | NOTE 5 | FIG.1             |
| 77138-001RELF | NOTE 2 | FIG.2             |
| 77138-101RELF | NOTE 6 | FIG.2             |



UNREELING DIRECTION  
FIG.1



UNREELING DIRECTION  
FIG.2

#### NOTES

- 1 MATERIAL : PHOSPHOR BRONZE
- ② FINISH : SELECTIVE GOLD PLATING 0.2μm MIN (CONTACT AREA) OVER 1.27μm Ni MIN
- 3 WIRE RANGE : AWG 26-30  
INSULATOR DIAMETER :  $\phi 1.4$  MAX
- 4 GENERAL TOLERANCE :  $\pm 0.25$
- ⑤ FINISH : SELECTIVE GOLD PLATING 0.5μm MIN (CONTACT AREA) OVER 1.27μm Ni MIN
- ⑥ FINISH : SELECTIVE GOLD PLATING 0.76μm MIN (CONTACT AREA) OVER 1.27μm Ni MIN
- 7 REMAINDER : GOLD FLASH  
a- UNDERPLATING 1.27μm NI MIN ALL OVER
- 8 THIS PRODUCT MEETS EUROPEAN UNION DIRECTIVES AND OTHER COUNTRY REGULATIONS AS DESCRIBED IN GS-22-008
- 9 CRIMP SPECIFICATION AS PER 100-006

|                          |                |     |          |                     |                               |            |  |        |  |                  |
|--------------------------|----------------|-----|----------|---------------------|-------------------------------|------------|--|--------|--|------------------|
| mat'l. code<br>SEE NOTES |                |     |          | surface<br>ISO 1302 | tolerance<br>ISO 406 ISO 1101 | projection | product family<br>MINITEK                |        |  |                  |
| ltr                      | ecn no         | dr  | date     | tolerances unless   | otherwise specified           | <br>mm     | title<br><b>CTW MINITEK</b><br>AWG 26-30 |        |  |                  |
| J                        | J07-0092       | R.S | 07.02.07 | angles              | .x $\pm 0.25$                 |            |  |        |  |                  |
| K                        | F08-0122       | JCO | 08.05.05 | linear              | .xx $\pm 0.15$                |            |  |        |  |                  |
| L                        | F08-0174       | JCO | 08.05.20 |                     | .xxx $\pm 0.05$               |            |  |        |  |                  |
|                          |                |     |          | dr                  | L.MULIN                       | 08.01.28   |  | dwg no |  | sheet 1 of 1     |
|                          |                |     |          | enr                 | J.COMPAGNON                   | 08.01.28   |  | 77138  |  | A3               |
|                          |                |     |          | chr                 |                               |            |  |        |  |                  |
|                          |                |     |          | appd                | J.CO                          | 08.05.05   |  | type   |  | CUSTOMER Drawing |
| sheet index              | revision sheet |     |          |                     |                               |            |  |        |  |                  |