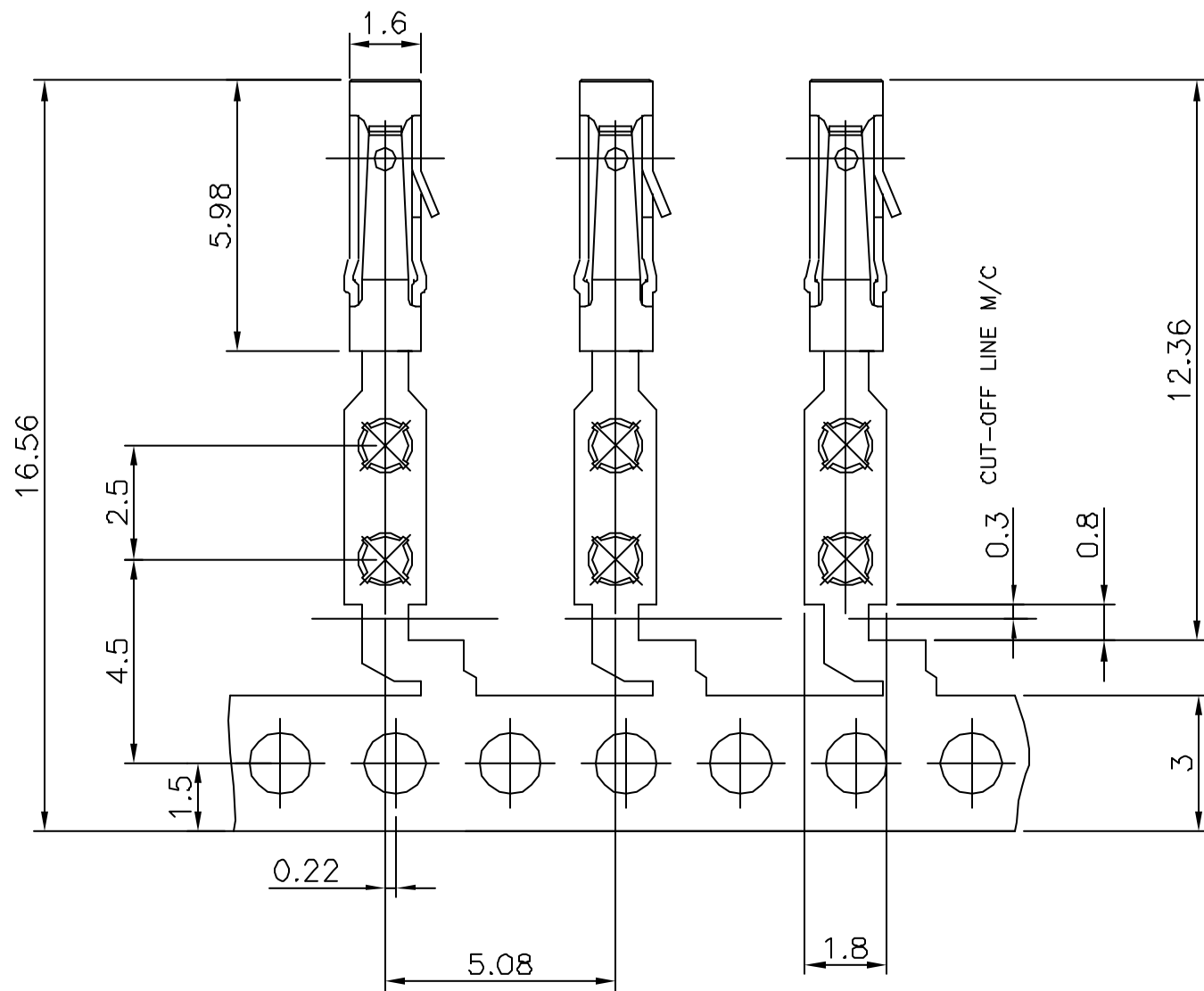
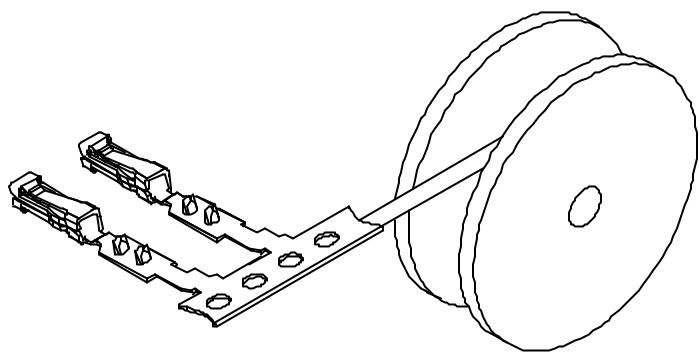


PRODUCT NUMBER	QUANTITY PER REEL	PACKAGING
76785-Y01(LF)	15000	CARDBOARD REEL
76785-Y11(LF)	3000	CARDBOARD REEL

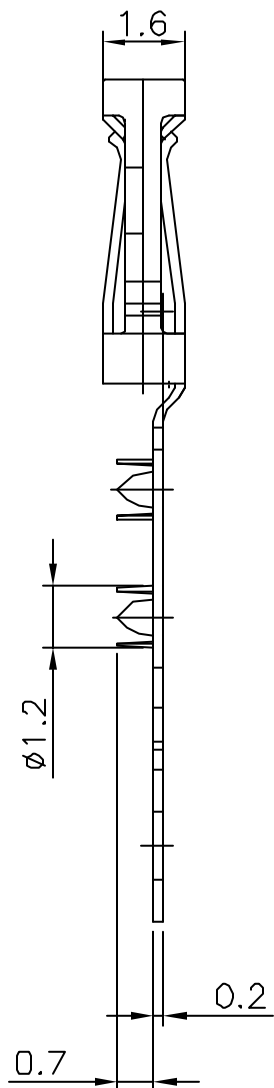
WHEN NEEDED, SUFFIX LETTER "LF" INDICATES THE PRODUCT IS RoHS COMPATIBLE, SEE NOTE 3



76785-3XXLF	0.75μm Au MIN. OVER 1.3μm Ni MIN.	Sn OVER Ni	0.3 N MIN
			0.6 N MAX
76785-4XXLF	5μm Sn MIN. OVER 1.27μm Ni MIN.	Sn OVER Ni	0.3 N MIN
			0.6 N MAX
76785-3XX	0.75μm Au MIN. OVER 1.3μm Ni MIN.	SnPb OVER Ni	0.3 N MIN
			0.6 N MAX
76785-4XX	5μm SnPb MIN. OVER 0.1μm Ni MIN.	SnPb OVER Ni	0.3 N MIN
			0.6 N MAX
PLATING CODE	CONTACT AREA	SOLDER TAIL	WITHDRAWAL FORCE USING SQUARE PIN
PLATING EXPLANATION			0.61



REELING AFTER STAMPING



NOTES:

- 1 - MATERIAL: PHOSPHOR BRONZE, EXTRA HARD
- 2 - FOR APPLICATION DATA, SEE TA 338
- 3 - RoHS COMPATIBLE PRODUCT SPECIFICATIONS
 - a - PLATING:
 - "LF" MEANS THE PRODUCT IS LEAD-FREE, 2μm MINIMUM MATTE TIN OVER 1.27μm MINIMUM NICKEL UNDERPLATE.
 - b - LABELING:
 - MEETS PACKAGING SPECS AS PER GS-14-920
 - c - LEGAL STATEMENT: SEE GS-22-008

THE PRODUCT IS NOT INTENDED TO BE EXPOSED TO A MANUFACTURING SOLDER PROCESS.

mat'l. code	SEE NOTE	surface	ISO 1302	tolerance	ISO 406	projection	product family
Ltr	ecb no	dr	date	tolerances unless otherwise specified	angle	linear	title
M	F05-0288	DLE	05.11.07		0°±13'		DUFLEX
N	F06-0198	DLE	06.06.13		0°±2'		DUFLEX
							TERMINAL
							scale 10:1
							dwg no
							sheet 1 of 1
							size
							A2
							type
							Product Customer Drawing
sheet index	revision sheet						