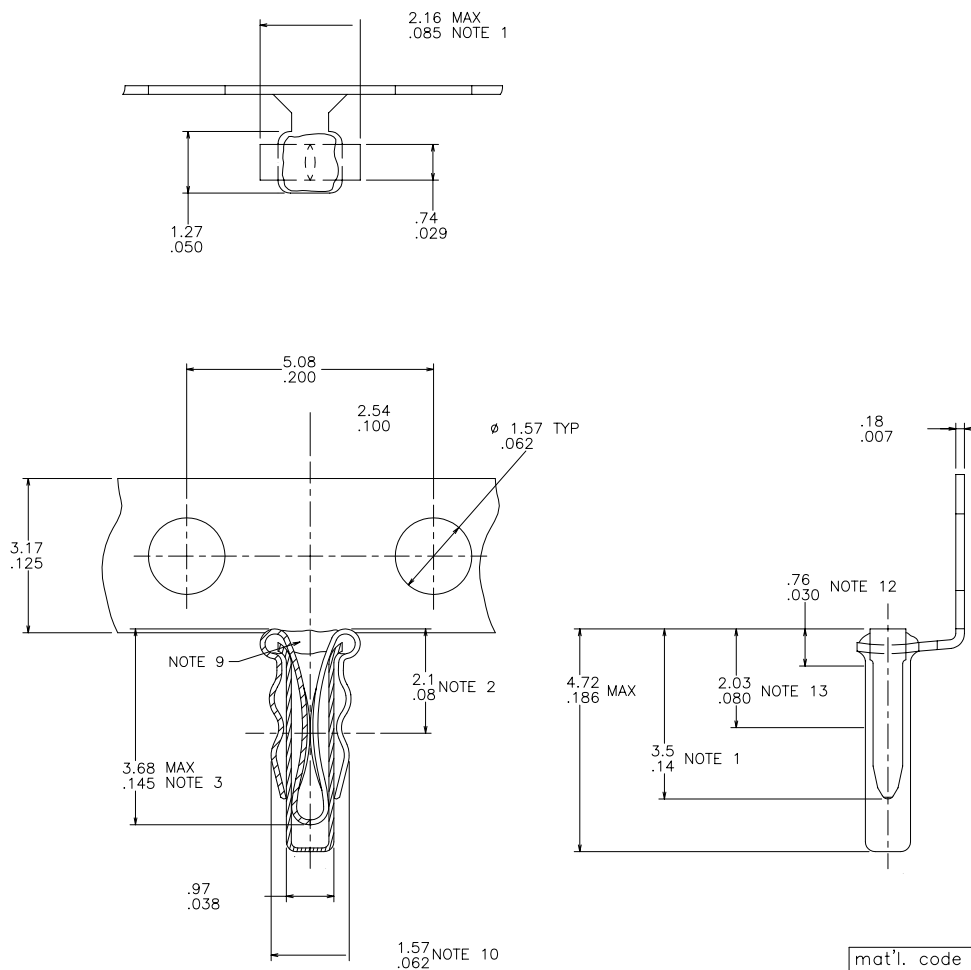


PRODUCT NO.	QTY/REEL
76693-001	25 M
76693-002	5 M



NOTES:

1. DIMENSIONS APPLY PRIOR TO INSTALLATION.
2. SHOWS CENTERLINE OF THEORETICAL POINT OF CONTACT FROM TOP OF SPRING.
3. SHOWS MAX DEPTH FOR .51/.020 LEAD FROM TOP OF SPRING.
4. THE SOCKET ASSY SHALL BE MACHINE INSERTABLE AND SELF-RETAINING DURING WAVE SOLDERING IN HOLES FROM 1.27/.050 TO 1.47/.058 DIA.
5. THE SPRING SHALL SOLDER TO THE CUP DURING WAVE SOLDERING IN SINGLE OR DOUBLE SIDED BOARDS TO 1.57/.062 THK, NO SOLDER SHALL ENTER CUP.
6. THE SOCKET SHALL ACCEPT ROUND LEADS FROM .30/.012 TO .56/.022 DIA AND FLAT LEADS, WHEN PROPERLY ORIENTED, FROM .20/.008 TO .38/.015 THK BY .38/.015 TO .58/.023 WIDE.
7. CUP MATERIAL: GILDING MATERIAL PER MIL C21768
SPRING MATERIAL: BeCu PER QQ-C-533
8. CUP PLATING: TIN-LEAD 60/40, .76μ/30μ" MIN THK
SPRING PLATING: 76μ/30μ" Au (MIL-G-4520B) TYPE IC, OVER 1.01μ/40μ" MICKEL (QQ-N-290).
9. RTV APPLIED TO AREA SHOWN TO PREVENT FLUX AND SOLDER FROM ENTERING SOCKET DURING WAVE SOLDERING.
10. DIM APPLIES WHEN TIP OF SPRING IS IN CONTACT WITH OUTSIDE OF CUP.
11. SEE PRODUCT SPECIFICATION NO 12-006 FOR INSERTION/WITHDRAWAL FORCES.
12. .76/.030 DIM REFERS TO INSTALLED HEIGHT 1, ABOVE BOARD.
13. 2.03/.080 DIM REFERS TO INSTALLED HEIGHT 2, ABOVE BOARD.

mat'l. code				surface	tolerance	projection	product family
-				ISO 1302	ISO 406	MM/INCH	SOCKETS
				ISO 1101	ISO 1101		
				tolerances unless otherwise specified			title
ltr	ec	no	dr	date	angles	linear	
F	REDRAWN	RLS	5/8/87			.X ±.25/.01	MINISERT SOCKET ASS'Y
G	M06-0278	MHT	7/22/06			.XX ±.13/.005	
					0°±2'	XXX ±.051/.0020	
				dr	R.SEIPLE	5/8/87	dwg no
				enr	H.SUNDY	5/8/87	sheet 1 of 1
				chr	H.SUNDY	5/8/87	size
				appd	H.SUNDY	5/8/87	A3
sheet	revision	G					type
index	sheet	1					Product Customer Drawing

form: A3