



FCIconnect.com

Copyright FCI

PRODUCT NUMBER  
76347-YXXLF

WHEN NEEDED, SUFFIX LETTER "LF"  
INDICATES THE PRODUCT IS RoHS  
COMPATIBLE, SEE NOTE 3

DEPENDS ON:  
INSULATION BARREL,  
WIRE BARREL AWG RANGE,  
REELING METHOD,  
NUMBER OF PRODUCT.  
SEE TABLE SHEET 2/2.

PLATING CODE

3= 0.76 $\mu$ m GOLD ON CONTACT AREA.

3.81 $\mu$ m TIN-LEAD ON TAIL.

4= 5 $\mu$ m TIN-LEAD ON CONTACT AREA.

3.81 $\mu$ m TIN-LEAD ON TAIL.

WHEN SUFFIX "LF" IS REQUIRED, 2 $\mu$ m MIN MATTE  
TIN OVER 1.27 MIN Ni IS SUPPLIED INSTEAD OF SnPb.

NOTES:

- 1 - TERMINAL MATERIAL: PHOSPHOR BRONZE.
- 2 - PRODUCT PACKED IN REEL.
- 3 - RoHS COMPATIBLE PRODUCT SPECIFICATIONS

a - PLATING:

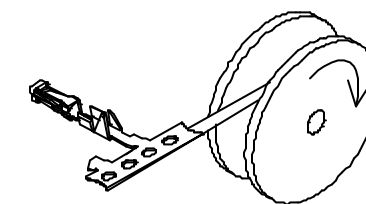
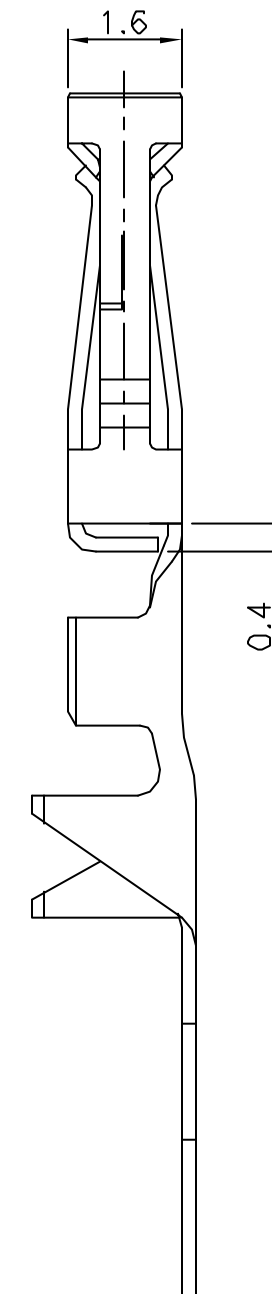
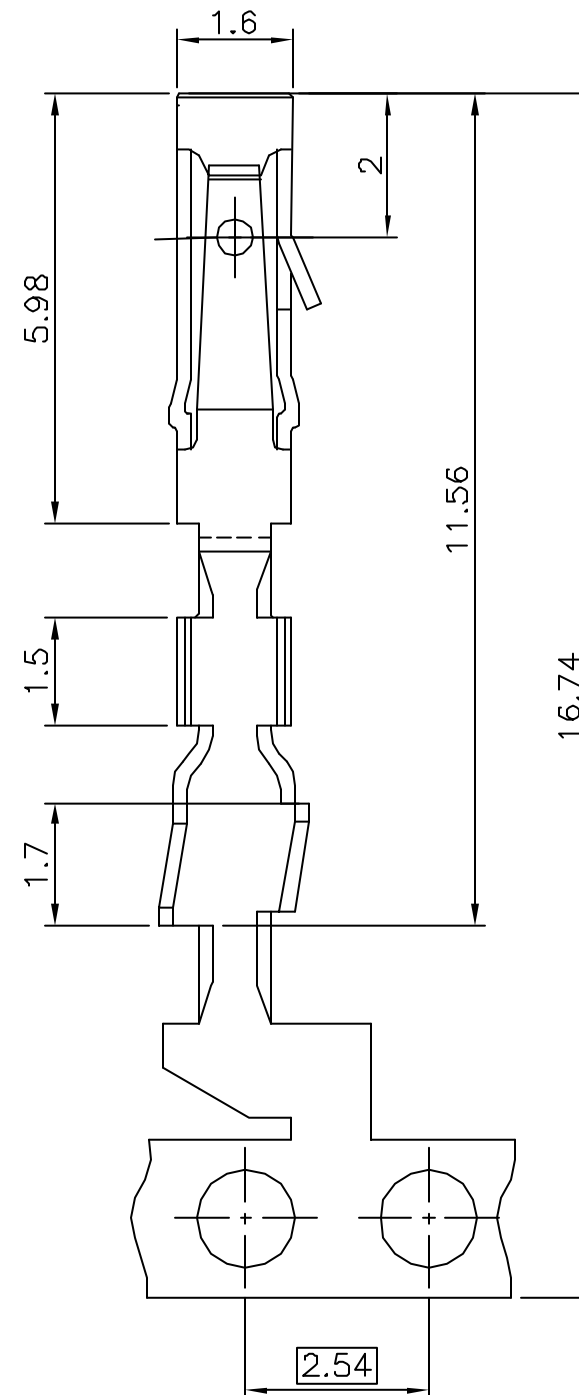
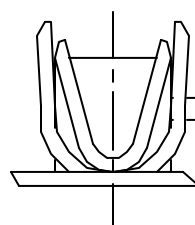
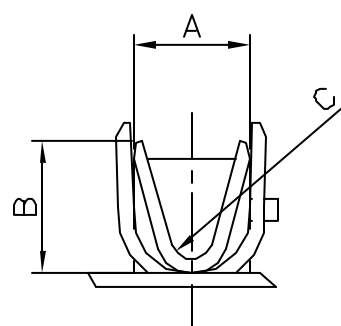
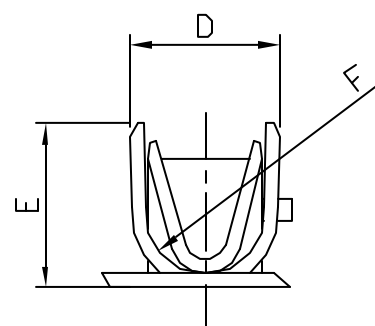
- "LF" MEANS THE PRODUCT IS LEAD-FREE,  
2 $\mu$ m MINIMUM MATTE TIN OVER 1.27 $\mu$ m  
MINIMUM NICKEL UNDERPLATE.

b - LABELING:

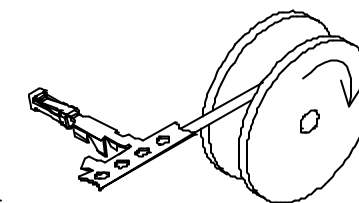
- MEETS PACKAGING SPECS AS PER GS-14-920

c - LEGAL STATEMENT: SEE GS-22-008

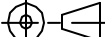


THE PRODUCT IS NOT INTENDED TO BE EXPOSED TO A



REELING METHOD P



REELING METHOD R

mat'l. code				surface ISO 1302 ✓		tolerance ISO 406 ISO 1101		projection 		product family DUBOX																																																																																																																																																																																																																																																																																																																																																																																																																																																																																																								
ltr		ecn no	dr	date	tolerances unless otherwise specified						title																																																																																																																																																																																																																																																																																																																																																																																																																																																																																																							
S		F06-0237	DLE	06.07.103	angles		linear		±0.13																																																																																																																																																																																																																																																																																																																																																																																																																																																																																																									
L		F04-0145	DLE	04.02.25	±2°																																																																																																																																																																																																																																																																																																																																																																																																																																																																																																													
M		F04-0360	DLE	04.10.11	dr	G CORBOZ		00.12.22																																																																																																																																																																																																																																																																																																																																																																																																																																																																																																										
N		F04-0373	DLE	04.11.19	enr	P NIZZI		00.12.22																																																																																																																																																																																																																																																																																																																																																																																																																																																																																																										
P		F05-0286	DLE	05.11.07	chr																																																																																																																																																																																																																																																																																																																																																																																																																																																																																																													
R		F06-0215	DLE	06.06.30	appd	P N		00.12.22																																																																																																																																																																																																																																																																																																																																																																																																																																																																																																										
sheet index		revision		S	D																																																																																																																																																																																																																																																																																																																																																																																																																																																																																																													

form: A3

1

2

3

4

5

6

A

B

C

D

PRODUCT NUMBER	WIRE BARREL			INSULATION BARREL			REELING		APPLICATION DATA		
	AWG SIZE	A	B	C	INSULATION DIA RANGE	D	E	F		METHOD	PRODUCTS
76347-X01(LF)	22-30	1.6	1.6	0.3	0.9-1.5	2.1	2.6	0.8	P	15 000	TA 317
76347-X02(LF)	22-30	1.6	1.6	0.3	0.9-1.5	2.1	2.6	0.8	R	15 000	TA 317
76347-X03(LF)	22-30	1.6	1.6	0.3	0.9-1.5	2.1	2.6	0.8	R	500	TA 317
76347-X11(LF)	20-22	2.1	2.0	0.6	1.1-1.6	2.4	2.2	0.8	P	15 000	TA 317
76347-X12(LF)	20-22	2.1	2.0	0.6	1.1-1.6	2.4	2.2	0.8	R	15 000	TA 317
76347-X41(LF)	28-32	1.7	1.0	0.3	0.55-0.8	1.3	1.3	0.3	P	15 000	TA 340
76347-X42(LF)	28-32	1.7	1.0	0.3	0.55-0.8	1.3	1.3	0.3	R	15 000	TA 340

mat'l. code				surface		tolerance		projection		product family	
ltr	ecn no	dr	date	ISO 1302		ISO 406 ISO 1101				DUBOX	
A	F10103	GCO	00.12.22	angles		linear		mm		CtW CONTACT ON REEL	
B	F10527	GSA	01.09.20								
C	F04-0373	DLE	04.11.19					scale 2.5:1		dwg no	
D	F06-0215	DLE	06.06.30	dr		G CORBOZ		00.12.22		sheet 2 of 2	
				enr		P NIZZI		00.12.22		size	
				chr						A3	
				appd		P N		00.12.22		type	
sheet index		revision sheet								CUSTOMER Drawing	

form: A3

1

2

3

4

5

6

Copyright FCJ

FCJconnect.com

FCJ

PDM: Rev:S

STATUSReleased

Printed: Jul 19, 2006