

PRODUCT NUMBER
75970-YXX-XXLF

WHEN REQUIRED, ADD SUFFIX LETTER "LF"
INDICATES THE PRODUCT IS RoHS
COMPATIBLE, SEE NOTE 7

TOTAL NB OF POS (02 TO 36 POS)

PLATING PIN STYLE

- 1 = 0.76µm GOLD/GXT,
OVER 1.27µm Ni MIN
- 8 = 0.38µm GOLD/GXT
OVER 1.27µm Ni MIN
- 3 = 3.81µm TIN/LEAD
OVER 1.27µm Ni MIN

— WHEN "LF" IS REQUIRED, 2µm MATTE
TIN OVER 1.27µm MIN NICKEL IS
PROVIDED INSTEAD OF TIN-LEAD

NOTES:

1. HOUSING MAT'L : HIGH TEMPERATURE
THERMOPLASTIC. UL94V-0 COLOR: BLACK.
2. PIN MATERIAL : PHOSPHOR BRONZE.
3. 12N MIN RETENTION IN EITHER DIRECTION.
4. TO DETERMINE DIMENSIONS :
N = NUMBER OF POSITIONS PER ROW
EXAMPLE : 8 POS PER ROW, $N \times 2.54 = 20.32\text{mm}$
5. FOR STANDARD SELECTIVE GOLD PLATED PRODUCTS
SEE DRAWINGS 54112 & 54122.
6. STANDARD PACKAGING IN POLYBAGS.
7. RoHS COMPATIBLE PRODUCT SPECIFICATIONS

a - PLATING:

— "LF" MEANS THE PRODUCT IS LEAD-FREE,
2µm MINIMUM MATTE TIN OVER 1.27µm
MINIMUM NICKEL UNDERPLATE.

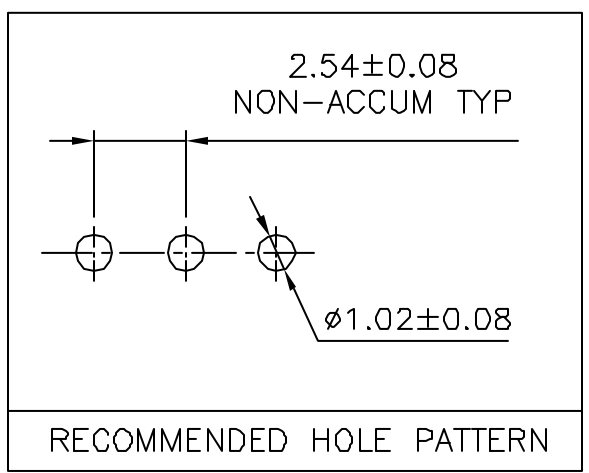
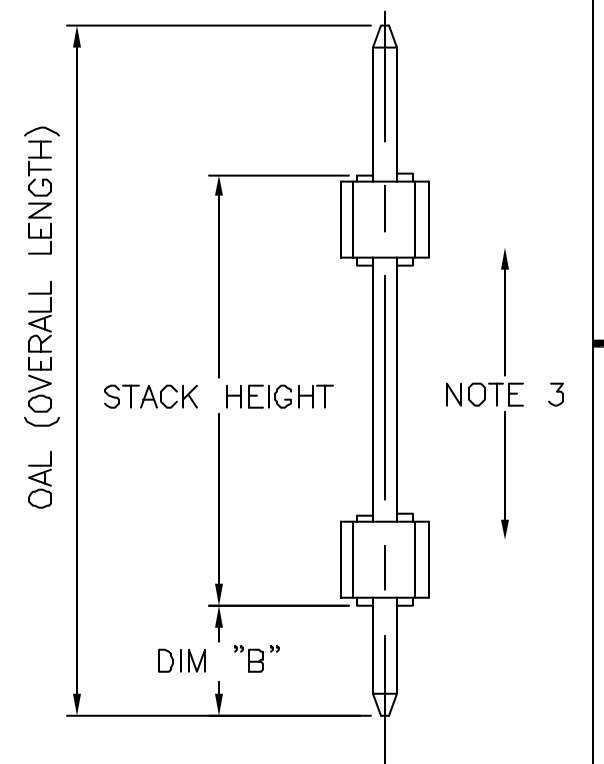
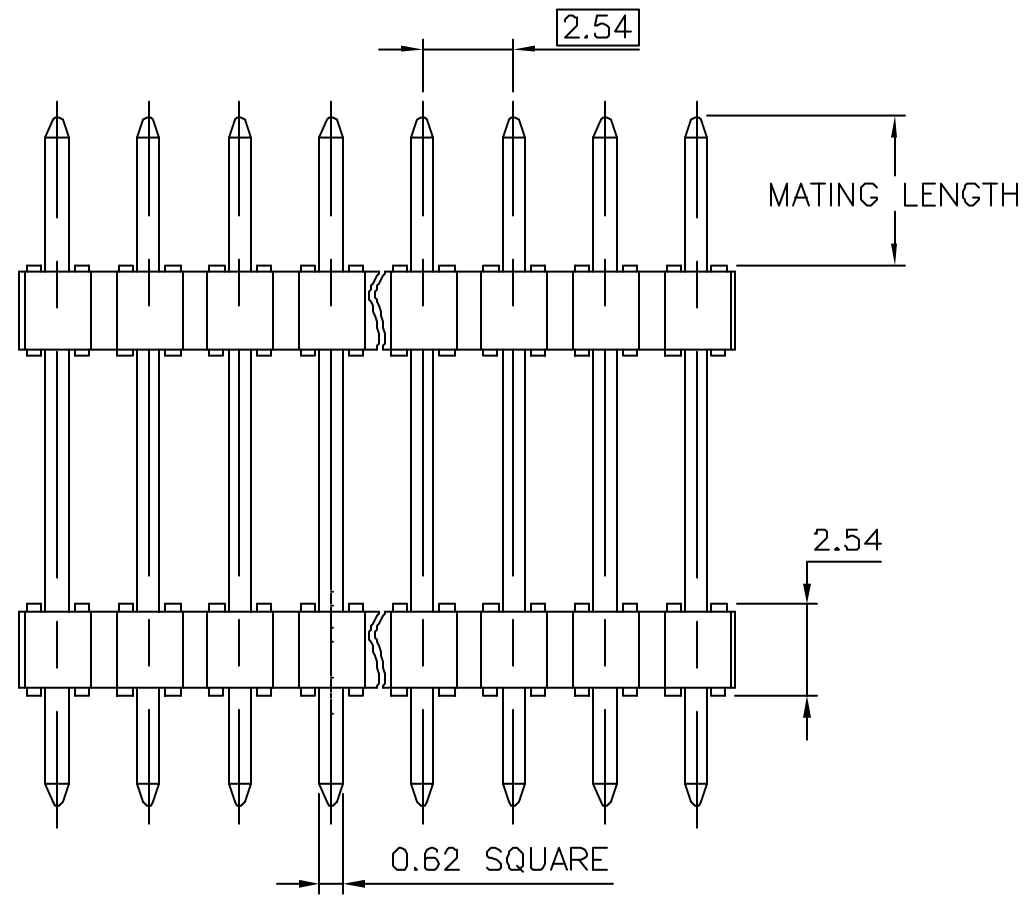
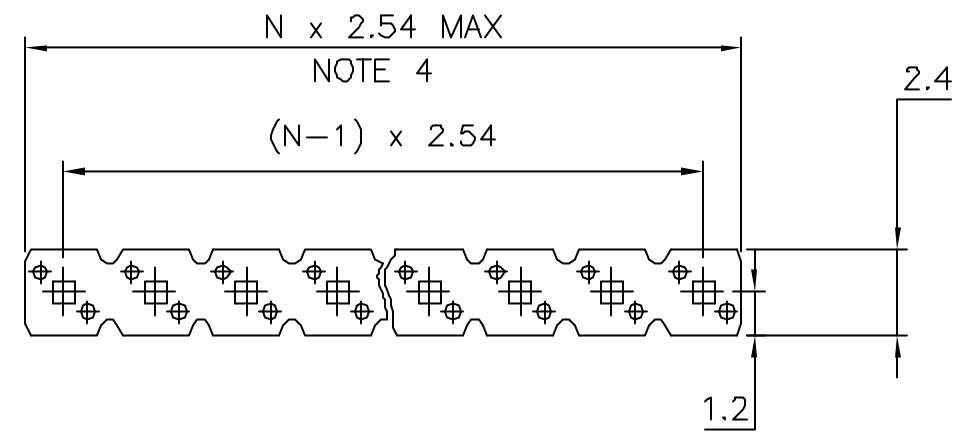
b - MANUFACTURING PROCESS COMPATIBILITY

— THE HOUSING WILL WITHSTAND EXPOSURE TO
260°C ±5°C SOLDER BATH TEMPERATURE FOR
5 SECONDS IN A WAVE SOLDER APPLICATION
WITH A 1.6mm MIN THICK CIRCUIT BOARD.

c - LABELING:

— MEETS PACKAGING SPECS AS PER GS-14-920

d - LEGAL STATEMENT: SEE GS-22-008



mat'l. code				surface	tolerance	projection	product family			
SEE P/N				ISO 1302	ISO 406	ISO 1101	BSTIT			
ltr	ecn no	dr	date	tolerances unless	otherwise specified		title			
CR	F20313	LMU	02.05.06	angles	X.X ±0.30	mm	HEADER STR,SR			
CS	F04-0105	LMU	04.01.07	Linear	X.XX ±0.13		DOUBLE BODY			
CT	F04-0385	LMU	04.12.23		X.XXX ±0.05	scale 5:1				
CU	F06-0196	LMU	06.06.20	dr	COMPAGNON J	94.07.01	dwg no		sheet 1 of 2	size
CV	F06-0301	LMU	06.10.13	enr	JMC	95.09.25	75970			A3
CW	F08-0148	JCO	08.05.27	chr			type		CUSTOMER	Drawing
CX	F09-0003	JCO	09.01.02	appd	JMC	95.09.25				
sheet	revision	CX	BU							
index	sheet	1	2							

