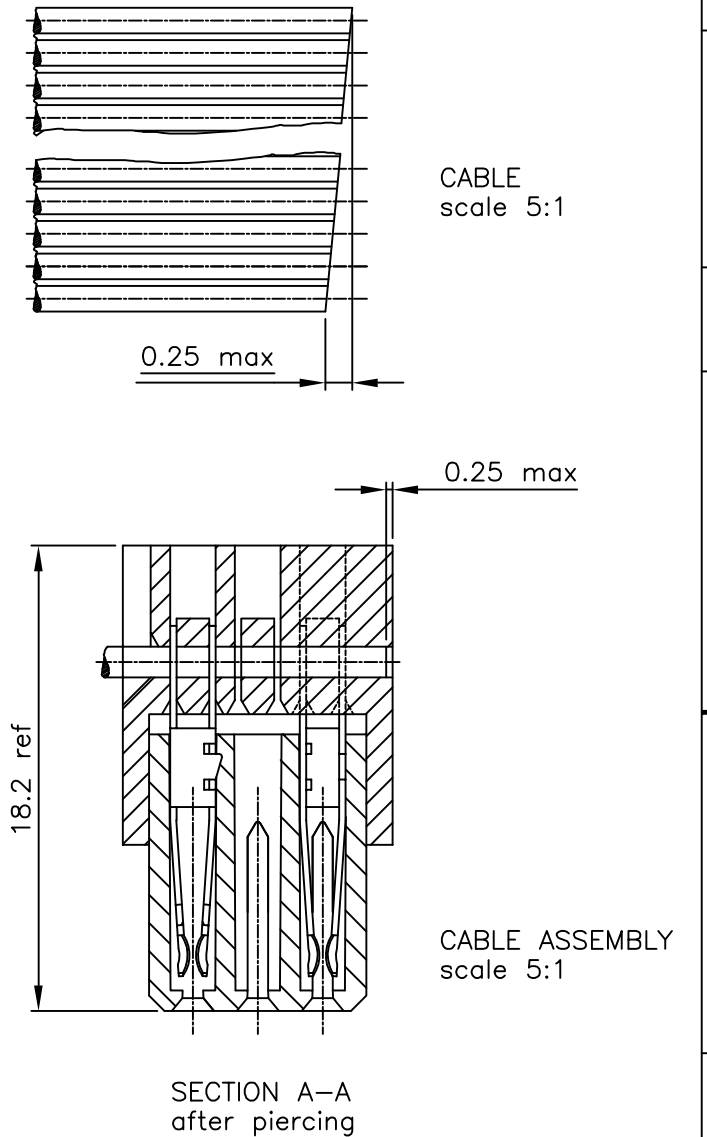
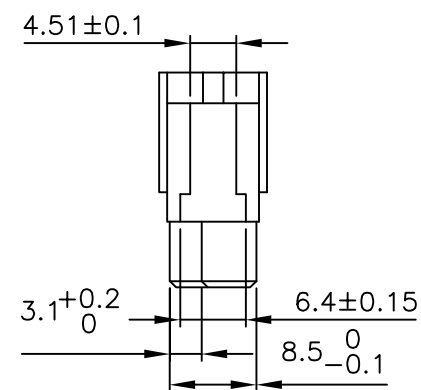
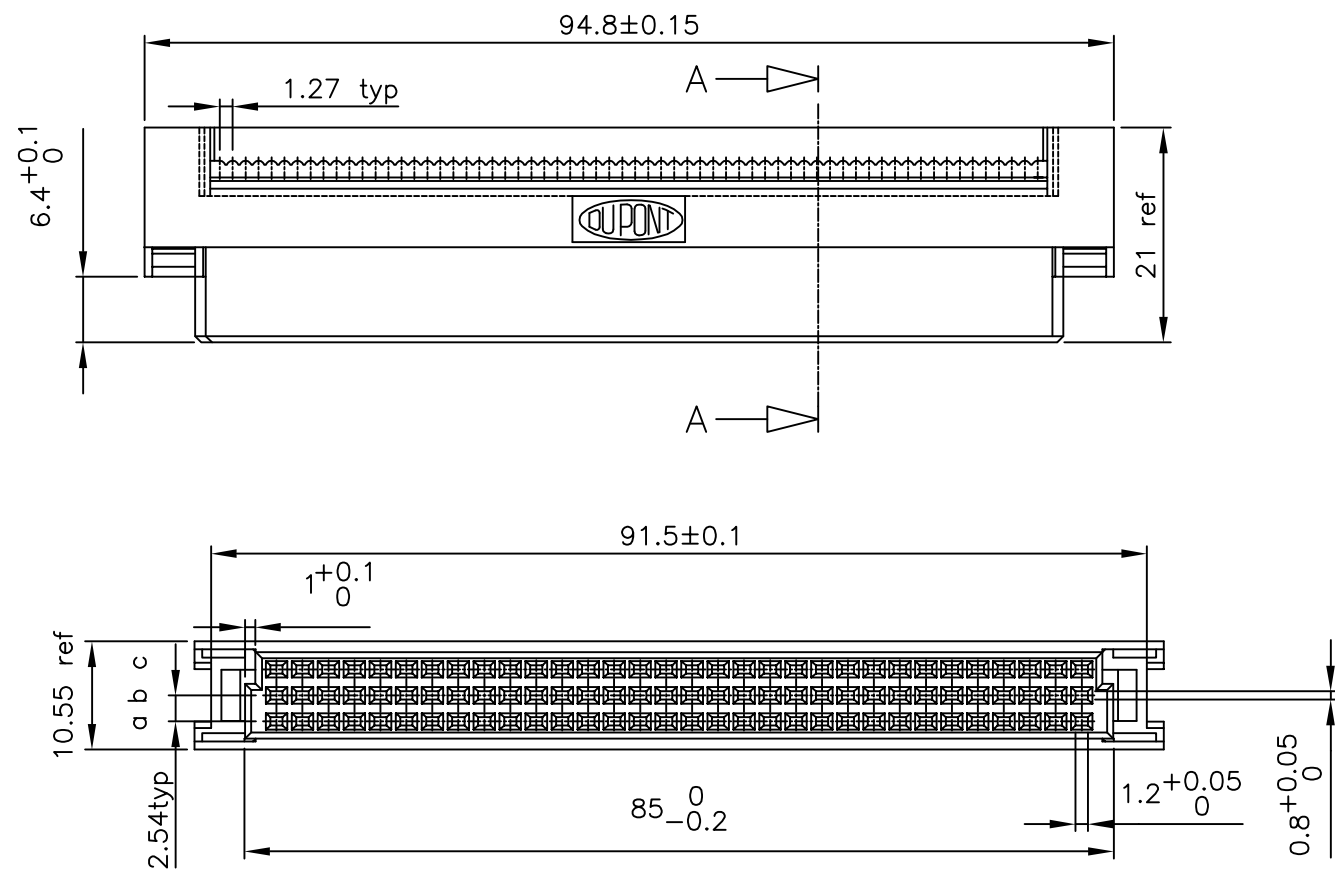


PRODUCT NUMBER	ROW	1	2	3	4	5	6	7	8	9	10	11	12	13	14	15	16	17	18	19	20	21	22	23	24	25	26	27	28	29	30	31	32
75859-X01	a	X	X	X	X	X	X	X	X	X	X	X	X	X	X	X	X	X	X	X	X	X	X	X	X	X	X	X	X	X	X	X	X
	b	X	X	X	X	X	X	X	X	X	X	X	X	X	X	X	X	X	X	X	X	X	X	X	X	X	X	X	X	X	X	X	X
	c	X	X	X	X	X	X	X	X	X	X	X	X	X	X	X	X	X	X	X	X	X	X	X	X	X	X	X	X	X	X	X	X
75859-X02	a	X	X	X	X	X	X	X	X	X	X	X	X	X	X	X	X	X	X	X	X	X	X	X	X	X	X	X	X	X	X	X	X
	b	X	X	X	X	X	X	X	X	X	X	X	X	X	X	X	X	X	X	X	X	X	X	X	X	X	X	X	X	X	X	X	X
	c																																






- NOTES:
- 1.MATERIAL HOUSING: THERMOPLASTIC POLYESTER 30% GLASS FILLED, FLAME RETARDANT PER UL-94-V0  
COLOUR HOUSING: GREY, COLOUR COVER: BLACK
  - 2.MATERIAL CONTACT: PHOSPHOR BRONZE
  - 3.CAN BE MATED WITH 3 ROW MALE CONNECTOR CONFORM DIN 41612 - FORM C
  - 4.CAN BE USED WITH STRAINRELIEF P/N 65142-001
  - 5."LF" SUFFIX TO THE PRODUCT NUMBER FOR LEAD FREE OR RoHS COMPATIBLE PRODUCTS.

NOTE:-

1. THE "LF" PRODUCTS MEET EUROPEAN UNION DIRECTIVES AND OTHER COUNTRY REGULATIONS AS DESCRIBED IN GS-22-008.
2. LEAD FREE OR RoHS DIRECTIVE LABELLING TO BE PROVIDED AS PER GS-14-920 FOR LEAD FREE VERSION.

75859-4YY	2.0 umAumin over 3 umNi	0.1-0.2 umNi
75859-2YY	0.5 umAumin over 3 umNi	0.1-0.2 umNi
75859-1YY	1.0 umAumin over 3 umNi	0.1-0.2 umNi
75859-0YY	3.0 umAumin over 3 umNi	0.1-0.2 umNi
PLATING	contact area	piercing area
CODE X	PLATING	

mat'l. code see table				surface ISO 1302 ✓		tolerance ISO 406 ISO 101		projection 		product family BACKPANEL			
ltr	ecn no	dr	date	tolerances unless otherwise specified		mm 		scale —		title QUICKIE FEMALE 64 Pos P.L. ASSEMBLY			
K	H00085	MVI	1990-02-23	angles linear						dwg no		sheet 1 of 1	size
L	H20166	MVI	1992-03-31							75859		A2	
M	005-0138	MINI	2005-08-08										
N	006-0082	MINI	2006-06-01	dr	M. Visschers	1992-03-31			type		CUSTOMER Drawing		
				engr									
				chr	RAKHEE GEORGE	2008-06-01							
				app	RAKHEE GEORGE	2008-06-01							
sheet index	revision sheet	N	1										F