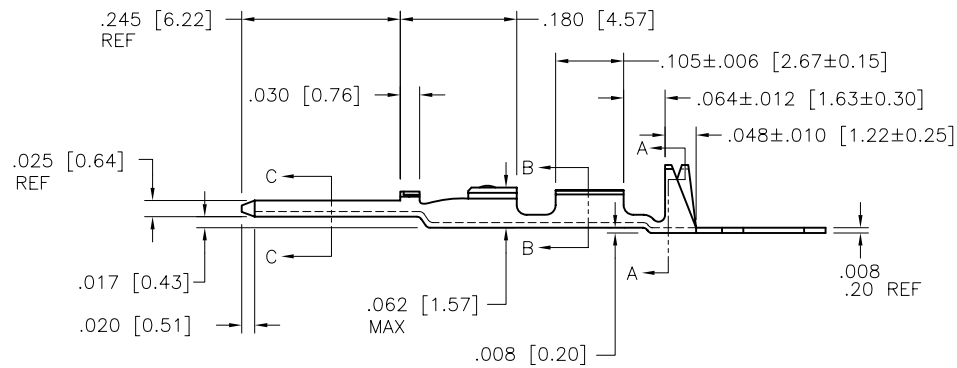
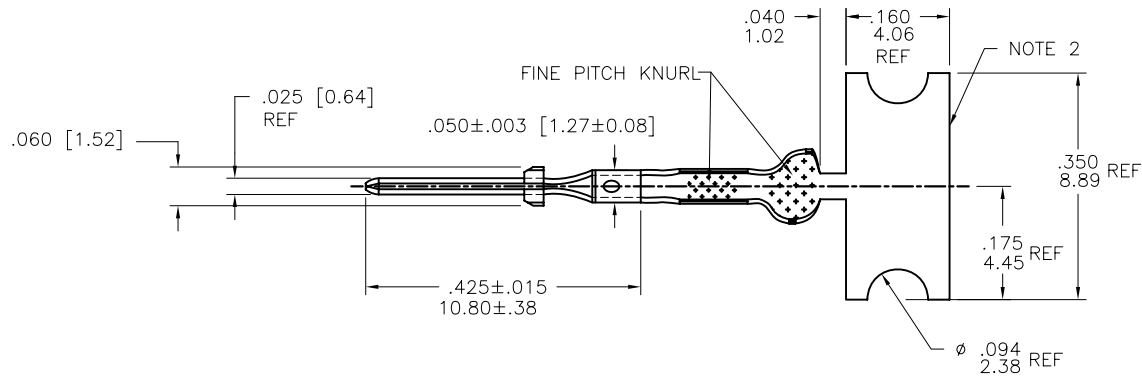

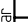




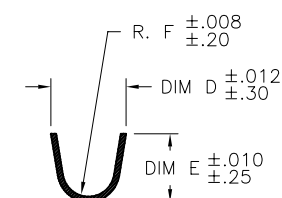
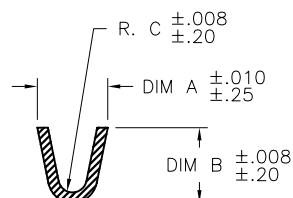
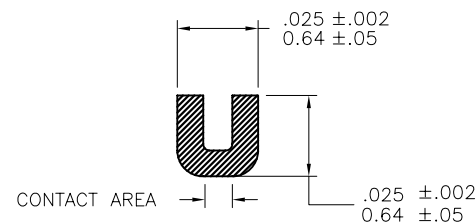
PRODUCT NUMBER  
SEE SHEET 2



mat'l. code 3/4 HD BRASS CDA NO. 260				surface <input checked="" type="checkbox"/> tolerance		projection 		product family PV TERMINAL							
ltr		ecn no		dr		date		tolerances unless otherwise specified							
D		V41703		SAR		1994-11-30		angles 		XX ±.01/XX±.3		INCH/MM		title CTW MALE PIN	
E		V80946		LSS		1998-06-03		0° ±2'		XXX ±.005/XX±.13		scale 4/1		<div>dwg no 75653</div> <div>sheet 1 of 3</div> <div>size A4</div>	
F		V04-0056		VS		2004-02-17				XXXX ±.0020/XXX±.051					
G		V05-0467		HTB		2005-05-23		dr		S ROYER		1994-11-30			
H		V06-0623		HTB		2006-06-28		engr		T.HANNA		1994-11-30			
J		V07-0218		HTB		2007-03-16		chr		T.HANNA		1994-11-30		<div>type CUSTOMER Drawing</div>	
K		V08-0440		HTB		2008-10-09		appd		T.HANNA		1994-11-30			
sheet index		revision sheet		K		K		K							
				1		2		3							

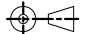
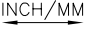
form: A4mmXlc

PRODUCT NO. AS REELED FOR APPLICATION MACHINES NOTE 5		WIRE AWG	WIRE BARREL			INSULATION BARREL			
RIGHT TO LEFT FEED	LEFT TO RIGHT FEED		A	B	C	D	E	F	
75653-001	75653-004	28-32	.054/1.37	.058/1.47	.011/0.28	.115/2.92	.105/2.67	.040/1.02	OBSOLETE
75653-001LF	75653-004LF	28-32	.054/1.37	.058/1.47	.011/0.28	.115/2.92	.105/2.67	.040/1.02	NOTE 7
75653-002	75653-005	22-26	.070/1.78	.065/1.65	.017/0.43	.139/3.53	.120/3.05	.050/1.27	OBSOLETE
75653-002LF	75653-005LF	22-26	.070/1.78	.065/1.65	.017/0.43	.139/3.53	.120/3.05	.050/1.27	NOTE 7
75653-003	75653-006	18-20	.104/2.64	.104/2.64	.021/0.53	.139/3.53	.120/3.05	.050/1.27	OBSOLETE
75653-003LF	75653-006LF	18-20	.104/2.64	.104/2.64	.021/0.53	.139/3.53	.120/3.05	.050/1.27	NOTE 7


 SECTION A-A  
SCALE 2:1

 SECTION B-B  
SCALE 2:1

 SECTION C-C  
SCALE 5:1

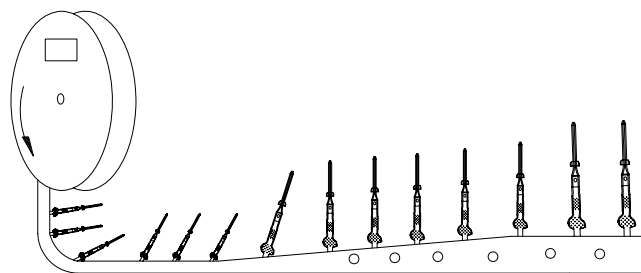
## NOTES:

- PLATING: 100 $\mu$ "/2.54 $\mu$  SnPb MINIMUM PRE-PLATED (OBSOLETE)  
P/N WITH LF SUFFIX: 100 $\mu$ "/2.54 $\mu$  Sn MINIMUM PRE-PLATED
- FOR MANUFACTURING PURPOSES ONLY.
- PART MAY BE USED WITH MINI-LATCH HSG.
- APPLICABLE SPECIFICATIONS:  
A. BUS-12-098: PRODUCT SPECIFICATION  
B. TA-211: CRIMP SPECIFICATION
- PART NUMBERS WITH AN LF SUFFIX MEET EUROPEAN UNION DIRECTIVES AND OTHER COUNTRY REGULATIONS AS DESCRIBED IN GS-22-008.
- THIS PRODUCT IS NOT INTENDED TO BE EXPOSED TO MANUFACTURING SOLDER PROCESSES.
- THIS PRODUCT HAS 100% TIN PLATING IN THE INTERFACE AND HAS NOT BEEN TESTED FOR WHISKER GROWTH IN ALL INTERCONNECT ENVIRONMENTS.
- PACKAGE QUANTITY: 8000 PER REEL

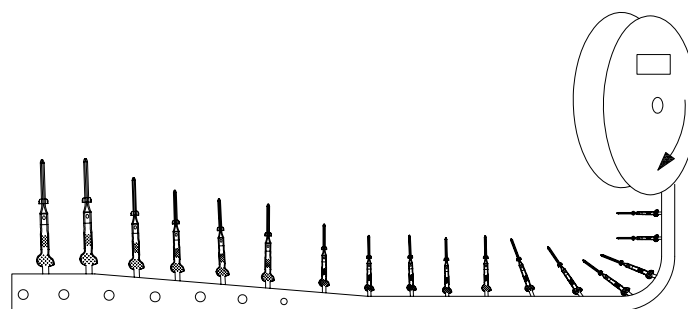
mat'l. code 3/4 HD BRASS CDA NO. 260				surface <input checked="" type="checkbox"/>		tolerance		projection 		product family PV TERMINAL			
ltr		ecn no		dr		date		tolerances unless otherwise specified				title	
K								angles		<div>INCH/MM</div> 		CTW MALE PIN	
								XX ±.01/ X±3					
								0° ±2°		XXX ±.005/ XX±13			
								XXXX ±.0020/ XXX±.051		scale 4/1			
								dr		S ROYER			
								engr		T.HANNA		1994-11-30	
								chr		T.HANNA		1994-11-30	
								appd		T.HANNA		1994-11-30	
sheet index		revision										dwg no	
		sheet										sheet 2 of 3	
												size	
												A	
												75653	
												type	
												CUSTOMER Drawing	

PRODUCT NUMBER

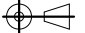
SEE SHEET 2



Unreeling Direction  
Left to Right Into  
Applicator



Unreeling Direction  
Right to Left Into  
Applicator

mat'l. code 3/4 HD BRASS CDA NO. 260				surface <input checked="" type="checkbox"/>	tolerance	projection 	product family PV TERMINAL	
ltr	ecm no	dr	date	tolerances unless otherwise specified				title
k				angles	$\frac{XX}{1000} \pm 0.01/XX \pm 3$	INCH/MM	CTW MALE PIN	
					$XXX \pm 0.005/XX \pm 13$			
				$0^\circ \pm 2^\circ$	$XXXX \pm 0.020/XXX \pm 0.051$	scale 1:1	dwg no	
				dr	H. SUNDY	2004-02-17	sheet 3 of 3	
				engr	H. SUNDY	2004-02-17	75653	
				chr	H. SUNDY	2004-02-17	type CUSTOMER Drawing	
				appd	H. SUNDY	2004-02-17		
sheet index	revision sheet							