

20 19 18 17 16 15 14 13 12 11 10 9 8 7 6 5 4 3 2 1

M

L

K

J

I

H

G

F

E

D

C

B

A

M

L

K

J

I

H

G

F

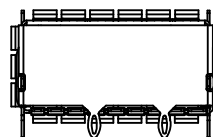
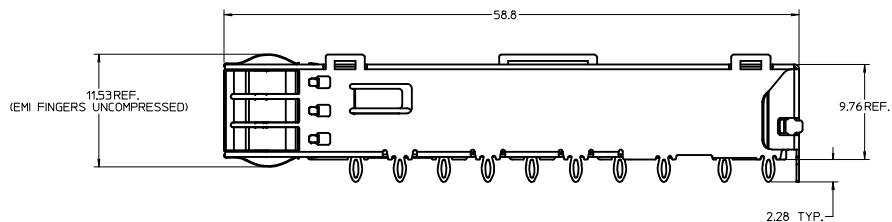
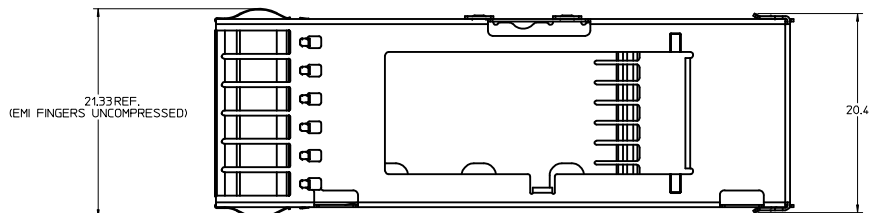
E

D

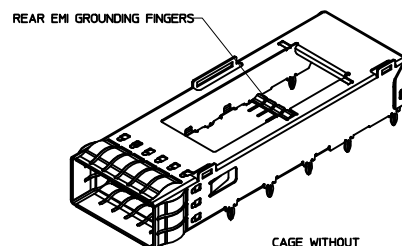
C

B

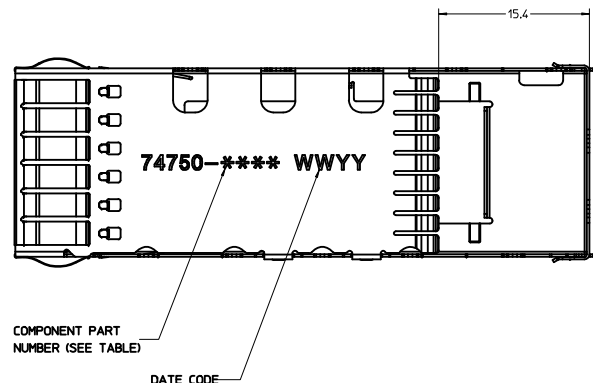
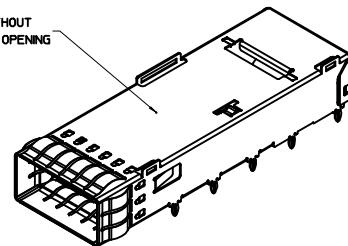
A



REAR PINS ARE OPTIONAL
(SEE CHART)



CAGE WITHOUT
HEAT SINK OPENING



COMPONENT PART
NUMBER (SEE TABLE)

DATE CODE

| FINISHED ASSEMBLY P/N | COMPONENT P/N (CAGE) | # OF REAR LEGS | COMMENTS |
|--------------------------|-------------------------|----------------|----------------------------------|
| 747500021 | 747500100 | 2 | |
| 747500023 | 747500103 | 0 | |
| 747500024 | 747500104 | 2 | NO HEAT SINK OPENING ON CAGE TOP |

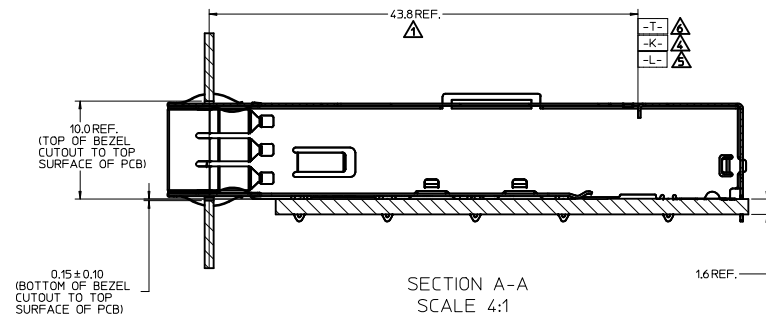
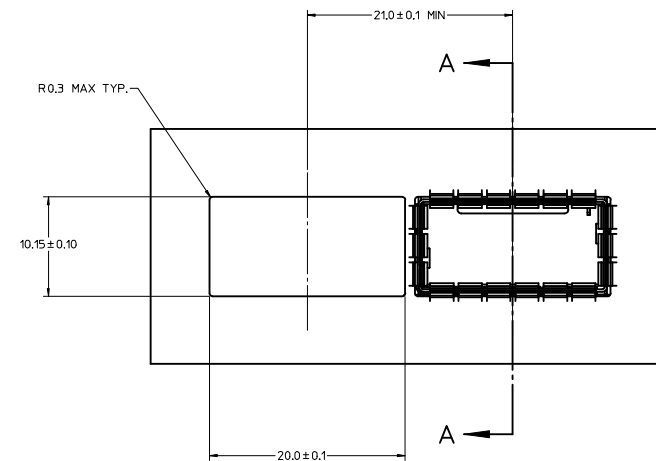
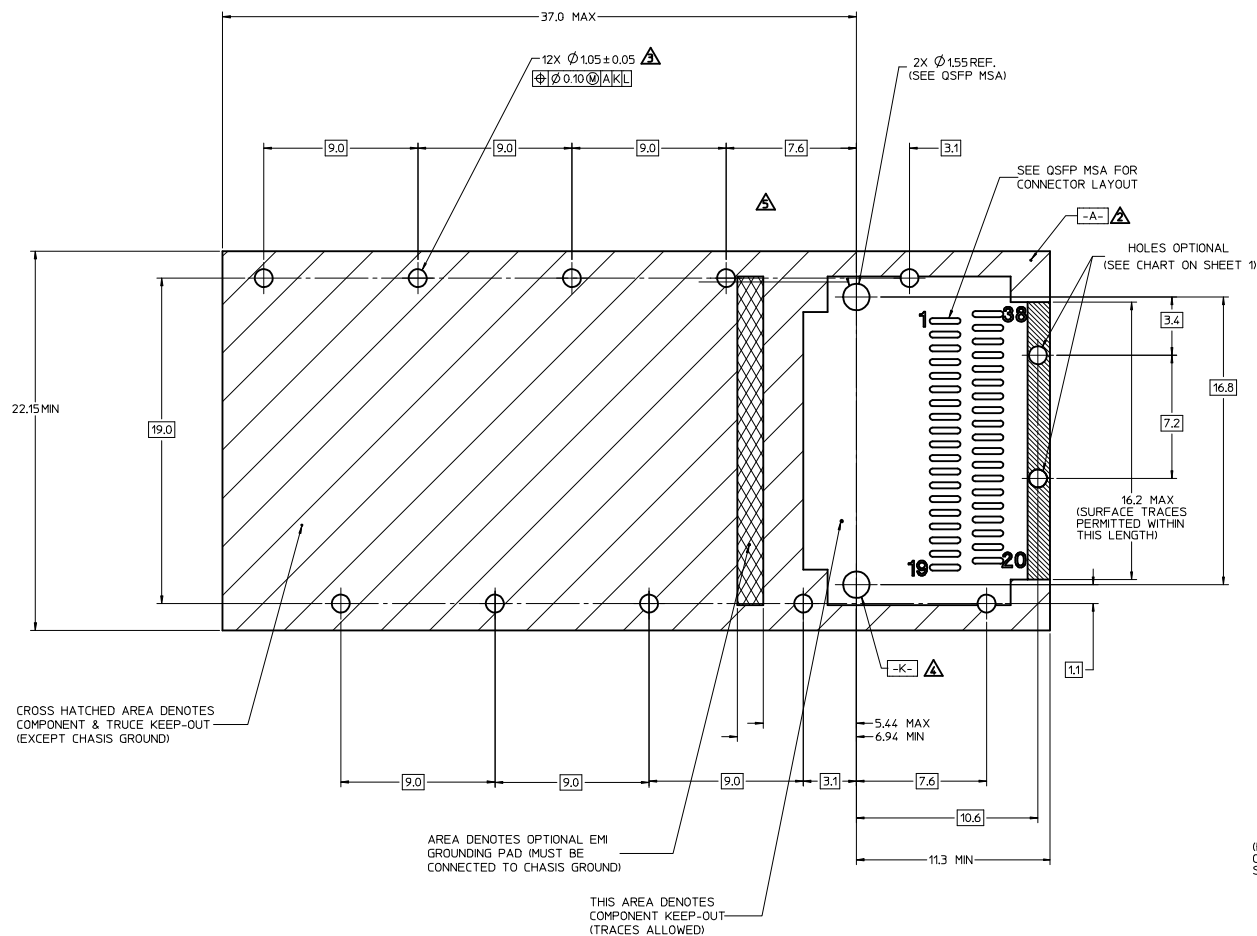
NOTES:

- PRESS FIT LEGS 2.28mm [0.090"] LONG
- SINGLE SIDED BOARD THICKNESS
NOMINAL: 1.60 [0.062"]
MINIMUM: 1.44 [0.057"]
BELLY TO BELLY BOARD THICKNESS
NOMINAL: 2.30 [0.090"]
MINIMUM: 2.07 [0.081"]
- MATERIAL: COPPER ALLOY (PLATED PRIOR TO CUTTING AND FORMING)
PLATING: NICKEL
- REFERENCE DOCUMENTS:
PRODUCT SPECIFICATION: QSFP MSA
- THIS PART MEETS THE RESTRICTION OF HAZARDOUS SUBSTANCES IN
ELECTRICAL AND ELECTRONIC EQUIPMENT (ROHS) DIRECTIVE (2002/95/EC).

| | | | | | | | | |
|--|--|---|--|----------------------------|--------------------|---|------------------------|---------------------------|
| ENTER DESCRIPTION EC NO: US2009-0256 DRAWN BY: CHIRSCHY CHKD: CHYKD APPR:RAHMOOD 2008/12/19 2008/12/19 2008/12/19 | DESCRIPTION QUALITY SYMBOLS ▽=0 ▽=0 | GENERAL TOLERANCES (UNLESS SPECIFIED) | | DIMENSION STYLE MM ONLY | | SCALE 4:1 | DESIGN UNITS METRIC | THIRD ANGLE PROJECTION |
| | | | | DRAWN BY CHIRSCHY | DATE 2007/07/23 | TITLE QSFP CAGE ASSEMBLY WITH SPRING FINGERS | | |
| | | | | CHECKED BY BRUSSELL | DATE 2007/07/23 | | | |
| | | | | APPROVED BY KMNROE | DATE 2007/07/23 | MOLEX INCORPORATED | | |
| | | | | MATERIAL NO. SEE TABLE | | DOCUMENT NO. SD-74750-0021 | | SHEET NO. 1 OF 4 |
| REV | | DRAFT WHERE APPLICABLE MUST REMAIN WITHIN DIMENSIONS | | SIZE D | | THIS DRAWING CONTAINS INFORMATION THAT IS PROPRIETARY TO MOLEX INCORPORATED AND SHOULD NOT BE USED WITHOUT WRITTEN PERMISSION | | |

19 18 17 16 15 14 13 12 11 10 9 8 7 6 5 4 3 2 1

PCB LAYOUT FOR SINGLE SIDED APPLICATIONS



NOTES:

1. SEE QSFP MSA SPECIFICATION FOR BEZEL LOCATION TOLERANCE
2. DATUM -A- IS TOP SURFACE OF HOST BOARD PER MSA
3. FINISHED HOLE SIZE (AFTER PLATING)
4. DATUM -K- IS HOST BOARD THRU HOLE #1 TO ACCEPT CONNECTOR GUIDE POST PER MSA
5. DATUM -L- IS HOST BOARD THRU HOLE #2 TO ACCEPT CONNECTOR GUIDE POST PER MSA
6. DATUM -T- IS HARD STOP ON CAGE PER MSA

| ENTER DESCRIPTION EC NO: USY2009-0256 DRAWN BY: CHIRSCHY CHKD: CHYD APPR: RMAHOD DATE: 2008/12/19 | QUALITY SYMBOLS ▽=0 ▽=0 | GENERAL TOLERANCES (UNLESS SPECIFIED) | | DIMENSION STYLE MM ONLY | | SCALE 1:1 | DESIGN UNITS METRIC | THIRD ANGLE PROJECTION | TITLE QSFP CAGE ASSEMBLY WITH SPRING FINGERS |
|--|-------------------------------|---|------|----------------------------|------------|--------------|------------------------|------------------------|---|
| | | mm | INCH | 4 PLACES ± | 3 PLACES ± | | | | |
| | | ± | --- | ± | --- | | | | |
| | | ±0.13 | --- | ± | --- | | | | |
| | | ±0.25 | --- | ± | --- | | | | |
| | | ANGULAR ± 1° | | | | | | | |
| | | DRAFT WHERE APPLICABLE MUST REMAIN WITHIN DIMENSIONS | | | | | | | |
| | | MATERIAL NO. SEE TABLE | | | | | | | |
| | | DOCUMENT NO. SD-74750-0021 | | | | | | | |
| | | SHEET NO. 2 OF 4 | | | | | | | |
| | | THIS DRAWING CONTAINS INFORMATION THAT IS PROPRIETARY TO MOLEX INCORPORATED AND SHOULD NOT BE USED WITHOUT WRITTEN PERMISSION | | | | | | | |

20 19 18 17 16 15 14 13 12 11 10 9 8 7 6 5 4 3 2 1

M

L

K

J

I

H

G

F

E

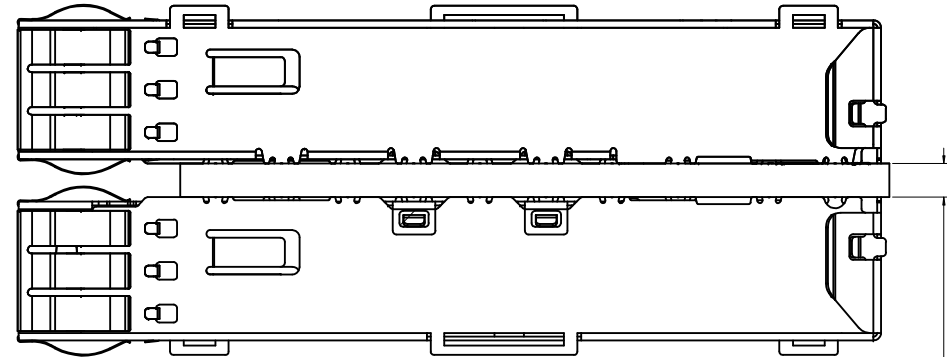
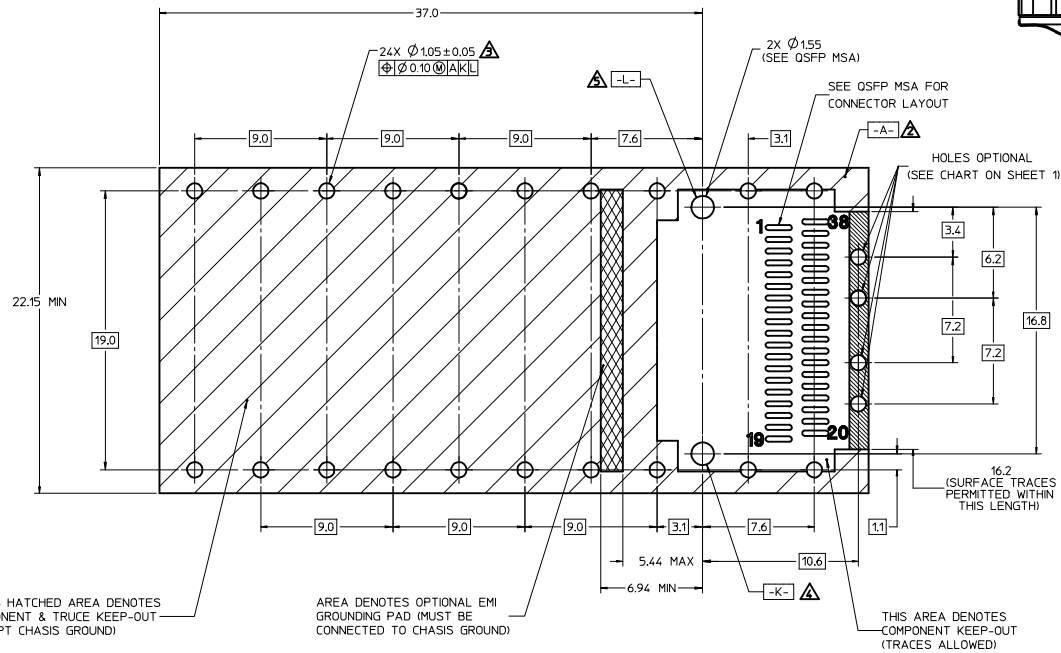
D

C

B

A

PCB LAYOUT FOR BELLY TO BELLY APPLICATIONS




NOTE:
BEZEL CUTOUT LOCATIONS FOR BELLY TO BELLY APPLICATIONS
ARE DEPENDENT ON PCB THICKNESS

2.3 REF.

NOTES:

1. SEE QSFP MSA SPECIFICATION FOR BEZEL LOCATION TOLERANCE
2. DATUM -A- IS TOP SURFACE OF HOST BOARD PER MSA
3. FINISHED HOLE SIZE (AFTER PLATING)
4. DATUM -K- IS HOST BOARD THRU HOLE #1 TO ACCEPT CONNECTOR GUIDE POST PER MSA
5. DATUM -L- IS HOST BOARD THRU HOLE #2 TO ACCEPT CONNECTOR GUIDE POST PER MSA

| | | | | | | | | | |
|--|-------------------------------|--|--|----------------------------|--|--|--|--|---------------------|
| ENTER DESCRIPTION EC NO: USY2009-0256 DRAWN BY: CHIRSCY CHKD: 2008/12/19 APPR: RMAHOD REV: 2008/12/19 | QUALITY SYMBOLS ▽=0 ▽=0 | GENERAL TOLERANCES (UNLESS SPECIFIED) | | DIMENSION STYLE MM ONLY | | SCALE 1:1 | DESIGN UNITS METRIC |  THIRD ANGLE PROJECTION | |
| | | | | DRAWN BY CHIRSCY | | DATE 2007/07/23 | TITLE QSFP CAGE ASSEMBLY WITH SPRING FINGERS | | |
| | | | | CHECKED BY BRUSSELL | | DATE 2007/07/23 | | | |
| | | | | APPROVED BY KMONROE | | DATE 2007/07/23 | | | |
| | | | | MATERIAL NO. SEE TABLE | | DOCUMENT NO. SD-74750-0021 | | | SHEET NO. 3 OF 4 |
| | | DRAFT WHERE APPLICABLE MUST REMAIN WITHIN DIMENSIONS | | SIZE D | | THIS DRAWING CONTAINS INFORMATION THAT IS PROPRIETARY TO MOLEX INCORPORATED AND SHOULD NOT BE USED WITHOUT WRITTEN PERMISSION | | | |
| | | | | | | | | | |
| | | | | | | | | | |
| | | | | | | | | | |
| | | | | | | | | | |
| | | | | | | | | | |

19 18 17 16 15 14 13 12 11 10 9 8 7 6 5 4 3 2 1

| DATE | REV | DESCRIPTION |
|------------|-----|--|
| 2007/07/23 | A | INITIAL RELEASE |
| 2007/08/06 | B | CHANGED ALL TANGENT LINES FROM DASHED LINES TO SOLID LINES |
| 2007/08/10 | C | 1. ADDED COMPONENT P/N COLUMN TO TABLE |
| | | 2. ADDED "COMPONENT" TO NOTE IN BOTTOM VIEW ON SHEET 1 |
| | | 3. CHANGED TEXT IN MATERIAL NO. SECTION OF TITLE BLOCK TO READ "SEE TABLE" |
| 2008/07/10 | D | 1. REMOVED COMMENTS FROM TABLE ON SHEET 1 |
| | | 2. ADDED "HOLES OPTIONAL" NOTE TO PCB LAYOUT ON SHEET 2 AND SHEET 3 |
| | | 3. ADDED 747500024 TO TABLE ON SHEET 1 AS WELL AS ISO VIEW |
| | | 4. UPDATED "COMPONENT PART NUMBER AND DATE CODE" NOTE ON SHEET 1 |
| 2008/12/16 | E | 1. 20.4 DIMENSION WAS 20.38 REF. |
| | | 2. 58.8 DIMENSION WAS 58.80 REF. |
| | | 3. 2.28 TYP. DIMENSION WAS 2.28 REF. |
| | | 4. 15.4 DIMENSION WAS 15.40 REF. |