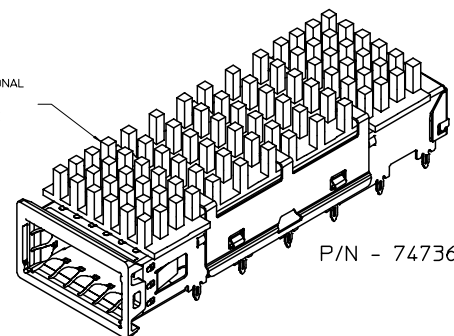
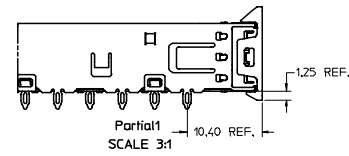
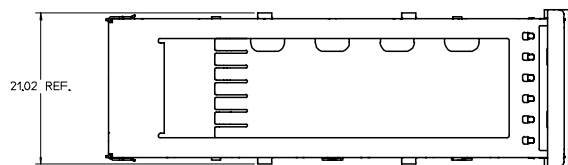


20 19 18 17 16 15 14 13 12 11 74736 9 8 7 6 5 4 3 2 1

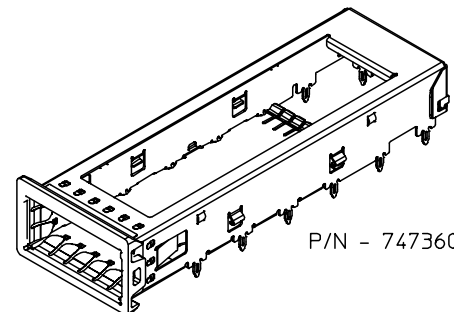
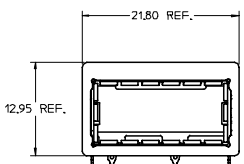
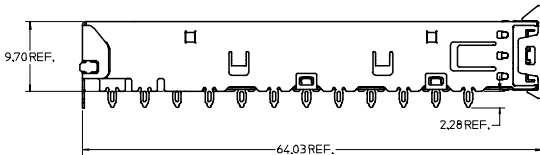
L  
K  
J  
I  
H  
G  
F  
E  
D  
C  
B  
A

L  
K  
J  
I  
H  
G  
F  
E  
D  
C  
B  
A

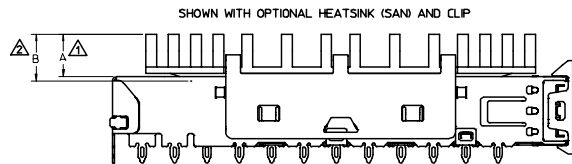
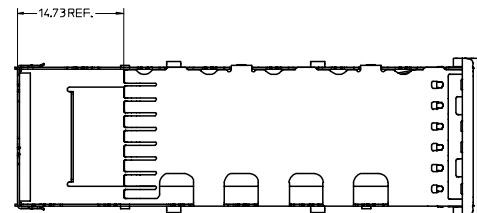


HEATSINK SINK AND CLIP ARE OPTIONAL  
SEE CHART FOR HEATSINK OPTIONS  
CUSTOM HEATSINKS ARE AVAILABLE

P/N - 747360212



P/N - 747360210



PART NUMBER FOR XFP CAGE ASSEMBLY & PARTS (W/OUT ELASTOMER EMI GASKET)					
P/N	DIM A	DIM B	DESCRIPTION	POWER LEVEL	THERMAL RESISTANCE @200 LFM
747360210	N/A	N/A	XFP CAGE WITH NO HEATSINK OR CLIP	N/A	N/A
747360211	4.0	4.2	XFP CAGE WITH PCI HEATSINK	UP TO 1.5W	<18.0 C/W
747360212	6.3	6.5	XFP CAGE WITH SAN HEATSINK (SHOWN)	UP TO 2.5W	<11.5 C/W
747360213	13.3	13.5	XFP CAGE WITH TALL HEATSINK	UP TO 3.5W	<8.0 C/W
747360230	N/A	N/A	HEATSINK CLIP ONLY	N/A	N/A
747360240	N/A	N/A	PCI HEATSINK ONLY	UP TO 1.5W	<18.0 C/W
747360241	N/A	N/A <td SAN HEATSINK ONLY	UP TO 2.5W	<11.5 C/W	
747360242	N/A	N/A	TALL HEATSINK ONLY	UP TO 3.5W	<8.0 C/W

- ▲ MAXIMUM HEIGHT OF HEATSINK WITH MODULE INSERTED
- ▲ OVERALL HEIGHT OF HEATSINK
- 3. OTHER HEATSINK DESIGNS ARE AVAILABLE INCLUDING CUSTOM DESIGNS

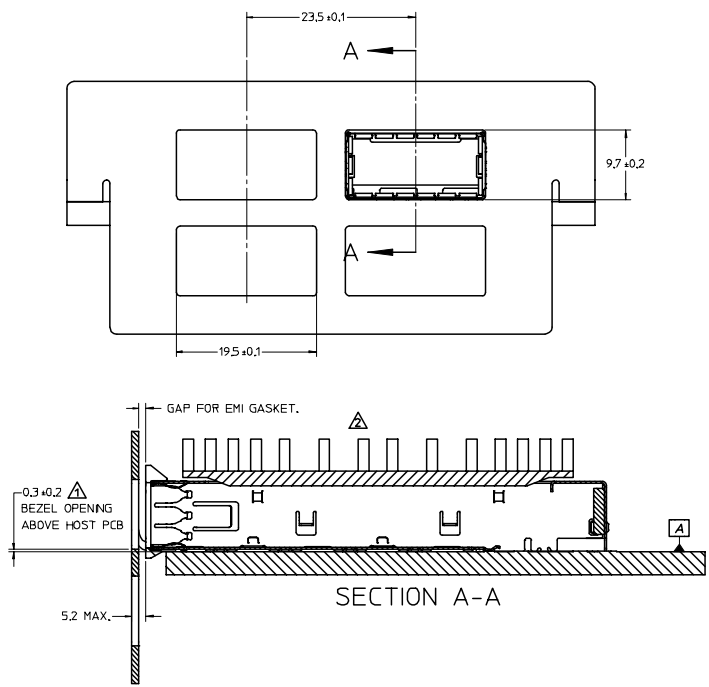
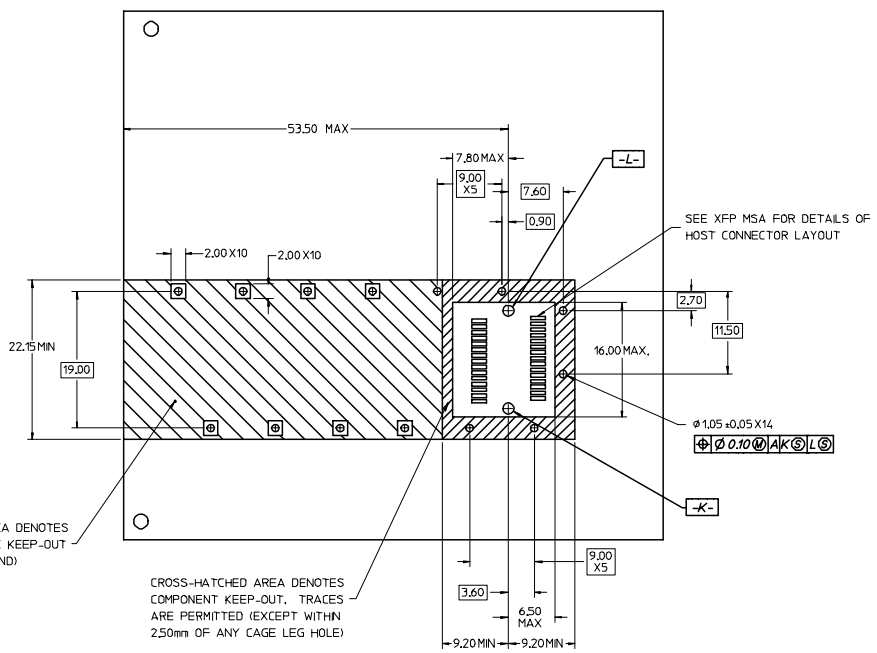
EC NO: USY2005-0054 DRW:KLLLOYD 2004/12/06 CHKD:BRUSSELL 2004/12/06 APPR:KLLLOYD 2004/12/07 REV A	QUALITY SYMBOLS	GENERAL TOLERANCES (UNLESS SPECIFIED)	SCALE 3:1	DESIGN UNITS METRIC	THIRD ANGLE PROJECTION	REVISE ON CAD ONLY	
	▽ -0 ▽ -0	DIMENSION STYLE MM ONLY DRAWN BY DATE KLLLOYD 2004/12/02 CHECKED BY DATE BRUSSELL 2004/12/02 APPROVED BY DATE BRUSSELL 2004/12/02	DIMENSION STYLE MM ONLY DRAWN BY DATE KLLLOYD 2004/12/02 CHECKED BY DATE BRUSSELL 2004/12/02 APPROVED BY DATE BRUSSELL 2004/12/02	DIMENSION STYLE MM ONLY DRAWN BY DATE KLLLOYD 2004/12/02 CHECKED BY DATE BRUSSELL 2004/12/02 APPROVED BY DATE BRUSSELL 2004/12/02	TITLE XFP CAGE ASSEMBLY WITHOUT ELASTOMER EMI GASKET	Molex MOLEX INCORPORATED	MATERIAL NO. SEE CHART
	DRAFT WHERE APPLICABLE MUST REMAIN WITHIN DIMENSIONS	ANGULAR ± 1°	DIMENSION STYLE MM ONLY DRAWN BY DATE KLLLOYD 2004/12/02 CHECKED BY DATE BRUSSELL 2004/12/02 APPROVED BY DATE BRUSSELL 2004/12/02	DIMENSION STYLE MM ONLY DRAWN BY DATE KLLLOYD 2004/12/02 CHECKED BY DATE BRUSSELL 2004/12/02 APPROVED BY DATE BRUSSELL 2004/12/02	TITLE XFP CAGE ASSEMBLY WITHOUT ELASTOMER EMI GASKET	Molex MOLEX INCORPORATED	MATERIAL NO. SEE CHART
	DRAFT WHERE APPLICABLE MUST REMAIN WITHIN DIMENSIONS	ANGULAR ± 1°	DIMENSION STYLE MM ONLY DRAWN BY DATE KLLLOYD 2004/12/02 CHECKED BY DATE BRUSSELL 2004/12/02 APPROVED BY DATE BRUSSELL 2004/12/02	DIMENSION STYLE MM ONLY DRAWN BY DATE KLLLOYD 2004/12/02 CHECKED BY DATE BRUSSELL 2004/12/02 APPROVED BY DATE BRUSSELL 2004/12/02	TITLE XFP CAGE ASSEMBLY WITHOUT ELASTOMER EMI GASKET	Molex MOLEX INCORPORATED	MATERIAL NO. SEE CHART

19 18 17 16 15 14 13 12 11 10 9 8 7 6 5 4 3 2 1

20 19 18 17 16 15 14 13 12 11 74736 9 8 7 6 5 4 3 2 1

L  
K  
J  
I  
H  
G  
F  
E  
D  
C  
B  
A

L  
K  
J  
I  
H  
G  
F  
E  
D  
C  
B  
A



CROSSED-HATCHED AREA DENOTES COMPONENT AND TRACE KEEP-OUT (EXCEPT CHASSIS GROUND)

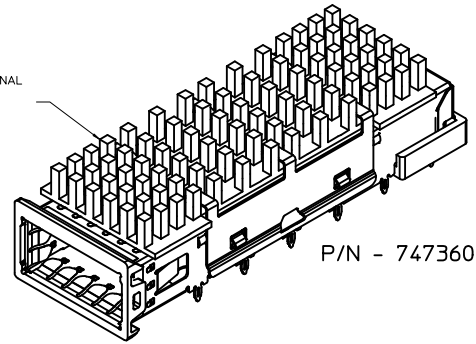
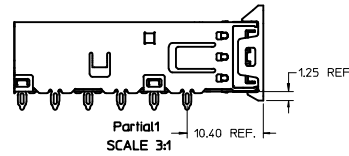
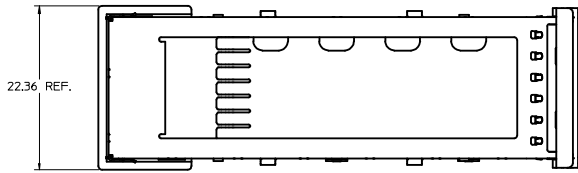
CROSS-HATCHED AREA DENOTES COMPONENT KEEP-OUT. TRACES ARE PERMITTED (EXCEPT WITHIN 2.50mm OF ANY CAGE LEG HOLE)

▲ FOR PCI APPLICATIONS RECOMMENDED DIMENSION IS 0.4 ±0.1  
 ▲ FLAT ROCK TOOLING CAN BE USED TO PRESS CAGE IN WITH OR WITHOUT HEATSINK  
 BOTTOM OF PCB SHOULD BE PROPERLY SUPPORTED  
 INSERTION FORCE MAX: 100LBS (WITH ANY PCB PLATING)

EC NO: USY2005-0054 DRWN: KLOYD 2004/12/06 CHKD: BRUSSELL 2004/12/06 APPR: KLOYD 2004/12/07 REV A	QUALITY SYMBOLS	GENERAL TOLERANCES (UNLESS SPECIFIED)	SCALE 3:1	DESIGN UNITS METRIC	THIRD ANGLE PROJECTION	REVISE ON CAD ONLY
	▼ -0	4 PLACES ± --- ± --- 3 PLACES ± --- ± --- 2 PLACES ± 0.10 ± --- 1 PLACE ± --- ± ---	DIMENSION STYLE MM ONLY DRAWN BY DATE KLOYD 2004/12/02 CHECKED BY DATE BRUSSELL 2004/12/02 APPROVED BY DATE BRUSSELL 2004/12/02	TITLE XFP CAGE ASSEMBLY WITHOUT ELASTOMER EMI GASKET		
	▽ -0	ANGULAR ± 1°	MOLEX INCORPORATED MATERIAL NO. DOCUMENT NO. SHEET NO. SEE CHART SD-74736-210 2 OF 2			
		DRAFT WHERE APPLICABLE MUST REMAIN WITHIN DIMENSIONS	THIS DRAWING CONTAINS INFORMATION THAT IS PROPRIETARY TO MOLEX INCORPORATED AND SHOULD NOT BE USED WITHOUT WRITTEN PERMISSION			

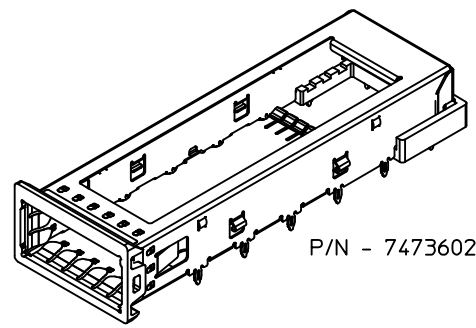
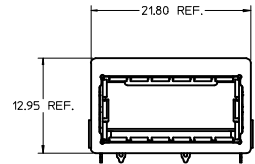
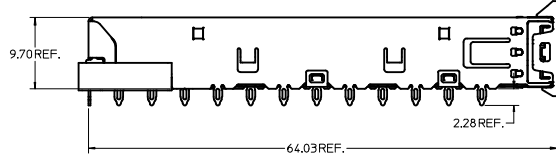
Rev. 01 2000/08/01

19 18 17 16 15 14 13 12 11 10 9 8 7 6 5 4 3 2 1

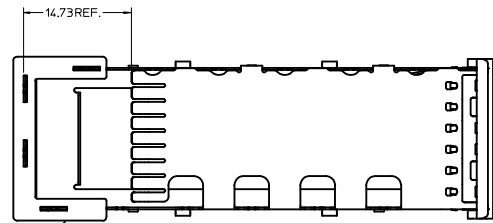


HEATSINK SINK AND CLIP ARE OPTIONAL  
SEE CHART FOR HEATSINK OPTIONS  
CUSTOM HEATSINKS ARE AVAILABLE

P/N - 747360222

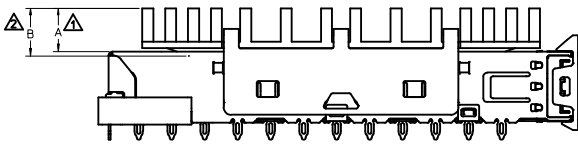


P/N - 747360220



COMPLIANT EMI GASKET  
(DARK COLORED)

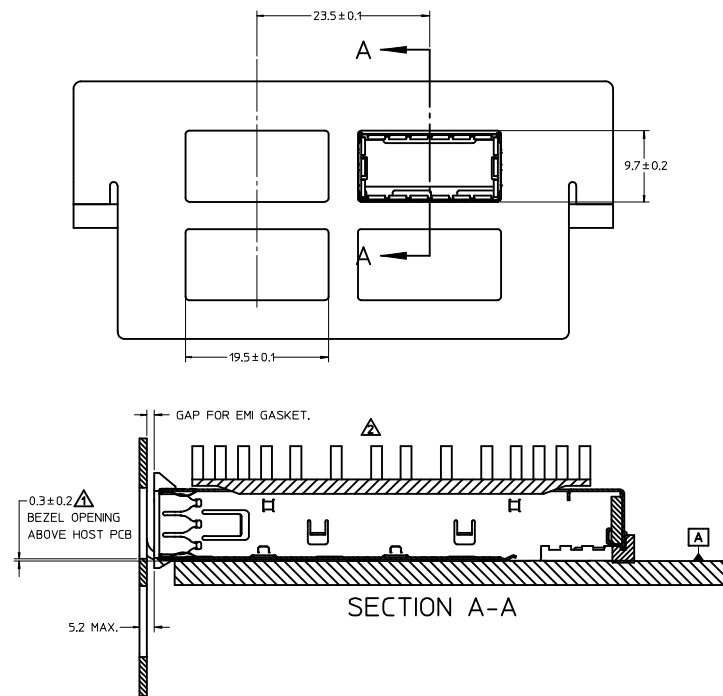
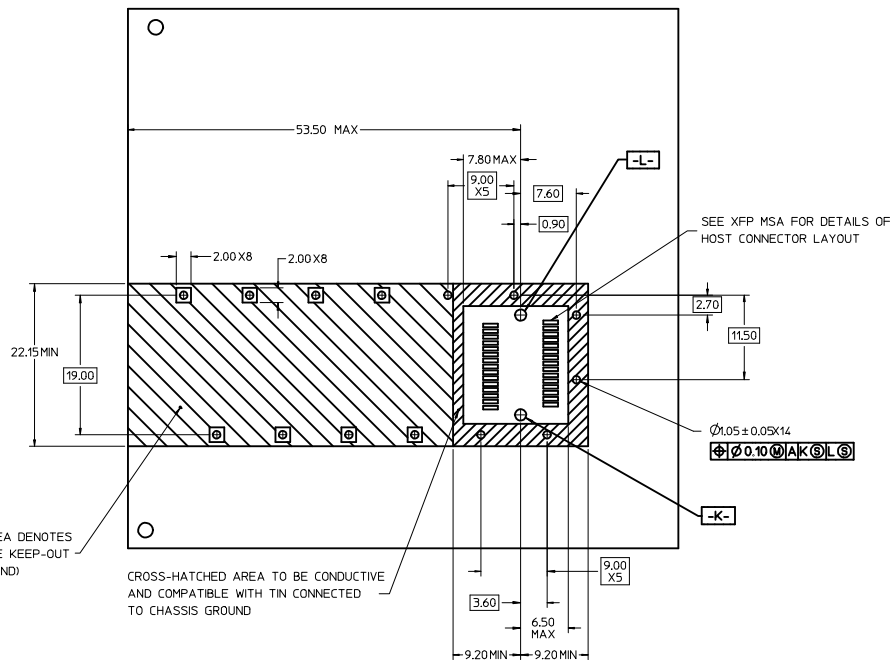
SHOWN WITH OPTIONAL HEATSINK (SAN) AND CLIP



- ▲ MAXIMUM HEIGHT OF HEATSINK WITH MODULE INSERTED
- ▲ OVERALL HEIGHT OF HEATSINK
- 3. OTHER HEATSINK DESIGNS ARE AVAILABLE INCLUDING CUSTOM DESIGNS

PART NUMBER FOR XFP CAGE ASSEMBLY & PARTS					
P/N	DIM A	DIM B	DESCRIPTION	POWER LEVEL	THERMAL RESISTANCE @200 LFM
747360220	N/A	N/A	XFP CAGE WITH NO HEATSINK OR CLIP	N/A	N/A
747360221	4.0	4.2	XFP CAGE WITH PCI HEATSINK	UP TO 1.5W	<18.0 C/W
747360222	6.3	6.5	XFP CAGE WITH SAN HEATSINK (SHOWN)	UP TO 2.5W	<11.5 C/W
747360223	13.3	13.5	XFP CAGE WITH TALL HEATSINK	UP TO 3.5W	<8.0 C/W
747360230	N/A	N/A	HEATSINK CLIP ONLY	N/A	N/A
747360240	N/A	N/A	PCI HEATSINK ONLY	UP TO 1.5W	<18.0 C/W
747360241	N/A	N/A	SAN HEATSINK ONLY	UP TO 2.5W	<11.5 C/W
747360242	N/A	N/A	TALL HEATSINK ONLY	UP TO 3.5W	<8.0 C/W

EC NO: USY2009-0234 DRWN: JERWIN 2008/12/17 CHKD: RMAHMOOD2008/12/18 APPR: RMAHMOOD2009/01/05 REV: D	QUALITY SYMBOLS 0 0	GENERAL TOLERANCES (UNLESS SPECIFIED) .mm INCH 4 PLACES ± .10 ± .004 3 PLACES ± .15 ± .005 2 PLACES ± 0.10 ± .005 1 PLACE ± .15 ± .005 ANGULAR ± 1° DRAFT WHERE APPLICABLE MUST REMAIN WITHIN DIMENSIONS	SCALE 3:1 DESIGN UNITS METRIC DIMENSION STYLE MM ONLY DRAWN BY DATE KLLOYD 2004/05/14 CHECKED BY DATE BRUSSELL 2004/08/05 APPROVED BY DATE BRUSSELL 2004/08/05	THIRD ANGLE PROJECTION REVISE ON CAD ONLY TITLE XFP CAGE ASSEMBLY MOLEX INCORPORATED MATERIAL NO. SEE CHART DOCUMENT NO. SD-74736-220 SHEET NO. 1 OF 2
	THIS DRAWING CONTAINS INFORMATION THAT IS PROPRIETARY TO MOLEX INCORPORATED AND SHOULD NOT BE USED WITHOUT WRITTEN PERMISSION			



FOR PCI APPLICATIONS RECOMMENDED DIMENSION IS 0.4 ± 0.1  
 FLAT ROCK TOOLING CAN BE USED TO PRESS CAGE IN WITH OR WITHOUT HEATSINK  
 BOTTOM OF PCB SHOULD BE PROPERLY SUPPORTED  
 INSERTION FORCE MAX: 100LBS (WITH ANY PCB PLATING)

EC NO: USY2009-0234 DRWN: JERWIN 2008/12/17 CHKD: FMAHMO02008/12/18 APPR: FMAHMO02009/01/05	QUALITY SYMBOLS ▽-0 ▽-0	GENERAL TOLERANCES (UNLESS SPECIFIED)		SCALE 3:1	DESIGN UNITS METRIC	THIRD ANGLE PROJECTION REVISE ON CAD ONLY		
		4 PLACES ± --- ± --- 3 PLACES ± --- ± --- 2 PLACES ± 0.10 ± --- 1 PLACE ± --- ± ---	DIMENSION STYLE MM ONLY	TITLE XFP CAGE ASSEMBLY				
		DRAFT WHERE APPLICABLE MUST REMAIN WITHIN DIMENSIONS		DRAWN BY KLLOYD	DATE 2004/05/14	CHECKED BY BRUSSELL	DATE 2004/08/05	MOLEX INCORPORATED MATERIAL NO. SEE CHART DOCUMENT NO. SD-74736-220 SHEET NO. 2 OF 2
				APPROVED BY BRUSSELL	DATE 2004/08/05	THIS DRAWING CONTAINS INFORMATION THAT IS PROPRIETARY TO MOLEX INCORPORATED AND SHOULD NOT BE USED WITHOUT WRITTEN PERMISSION		