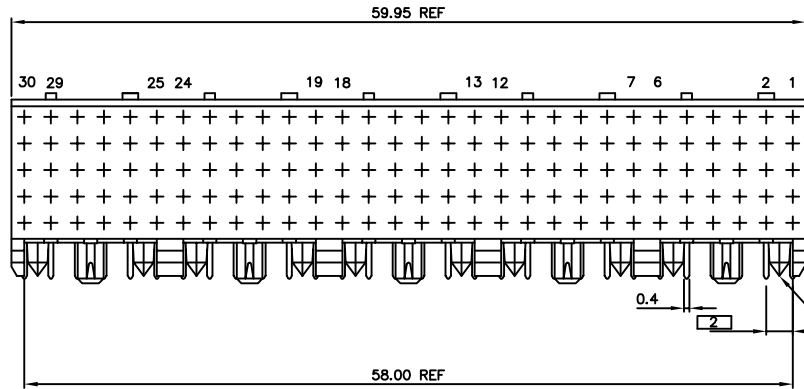
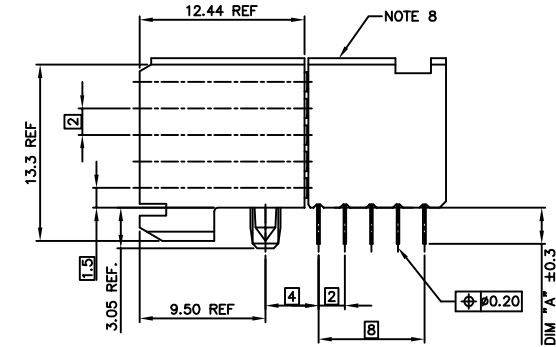




PRODUCT NUMBER	ASSY. STYLE	BOARD ATTACHMENT	TAIL TERMINATION	TAIL LGTH. DIM "A"	PCB THICKNESS	NOTES
SEE TABLE SH. 3	1	PRESS-PEG	SOLDER-TO-BOARD	2.90mm	1.6mm	NOTE 7
	1	PRESS-PEG	SOLDER-TO-BOARD	3.53mm	2.4mm	NOTE 7
	2	HEAT-STAKE	SOLDER-TO-BOARD	2.90mm	1.6mm	
	2	HEAT-STAKE	SOLDER-TO-BOARD	3.53mm	2.4mm	
	3	PRESS-PEG	PRESS-FIT	2.90mm	1.6mm	NOTE 7
	3	PRESS-PEG	PRESS-FIT	3.53mm	2.4mm	NOTE 7



NOTE 7



ASSY. STYLE 1

NOTES:

- CONNECTOR MATERIALS:
HOUSING: LCP, 30% GLASS FILLED,
UL 94-V0 COMPLIANT
TERMINAL: PHOSPHOR BRONZE ALLOY
- PLATING ON TAIL:
PRESS-FIT TYPE
73952-XXY IS 0.5-1.5um SnPb
73952-XYLF IS 0.5-1.5um Sn (LEAD FREE)
SOLDER-TO-BOARD TYPE
73952-YYY IS 2-8um SnPb
73952-XYLF IS 2-8um Sn (LEAD FREE)
- PRODUCT SPECIFICATION:
GS-12-002
- APPLICATION SPECIFICATIONS:
BUS-20-061
GS-20-001
TA-941
- PRODUCT MARKING: (PART NUMBER & LOT CODE).
- INDICATED HOLES ARE UNPLATED.
- LOCATION PEG FEATURES MAY NOT BE AVAILABLE AS SHOWN FOR ASSYS W/ PRESS PEGS.
- TOP SURFACE OF PRESS BLOCK MAY EXTEND UP TO 0.4MM HIGHER THAN HOUSING. THIS MAY AFFECT THE TAIL LENGTH BEFORE APPLICATION TO A BOARD.

- DIMENSION APPLIES TO BOTH PRESS-FIT AND SOLDER TAIL TERMINATIONS.
- THESE PRODUCTS WHERE THE PART NUMBER ENDS IN "LF" MEET THE EUROPEAN UNION DIRECTIVES AND OTHER COUNTRY REGULATIONS AS DESCRIBED IN GS-22-008.

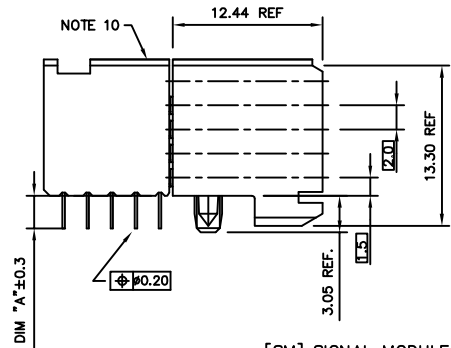
ALL PRODUCTS MANUFACTURED BEFORE APRIL 2006 WILL WITHSTAND EXPOSURE TO 240°C FOR 60 SECONDS IN A CONVECTION, INFAR-RED OR VAPOR PHASE REFLOW OVEN.

ALL PRODUCTS MANUFACTURED AFTER MARCH 2006 WILL WITHSTAND EXPOSURE TO 260°C FOR 60 SECONDS IN A CONVECTION, INFAR-RED OR VAPOR PHASE REFLOW OVEN.

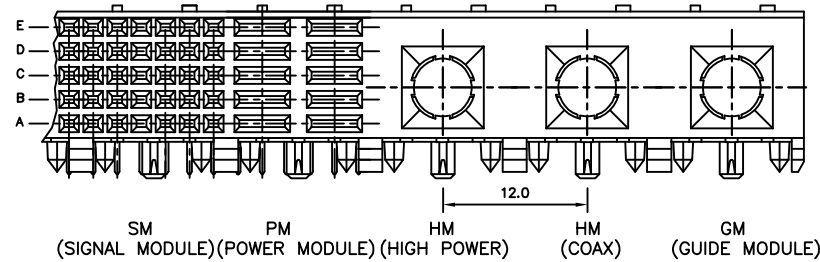
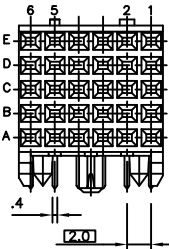
- FOR LEAD FREE PART NUMBERS ADD "LF" SUFFIX. EXAMPLE: 73952-XYLF.

mat'l. code SEE NOTES				tolerances unless otherwise specified		CUSTOMER COPY	FCI www.fciconnect.com	
ltr	ecn no	dr	date	linear	.X ±.3		projection	title
H	V00851	JWS	6/2/00		.XX ±.10			5 ROW R/A HYBRID
J	V01991	JWS	8/15/00		.XXX ±.050			RECEPTACLE - 60MM
K	V03-0722	LP	8/21/03	angles	0° ±2°			
L	V05-1012	JRV	11/3/05	dr	M.FETROW 6/25/97			product family METRAL (tm)
M	DG08-0171	TER	9/06/08	enr	C.PENDLETON 6/25/97			size dwg no
				chr	C.PENDLETON 6/25/97			code
				appd	C.PENDLETON 6/25/97			213
sheet	revision	M	M	M				sheet
index	sheet	1	2	3				1 of 3

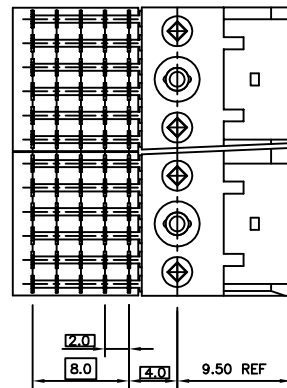
cage code
22526



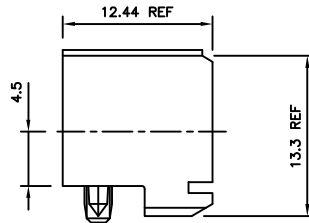
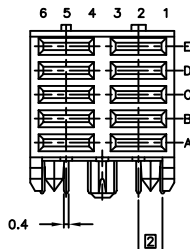
[SM] SIGNAL MODULE



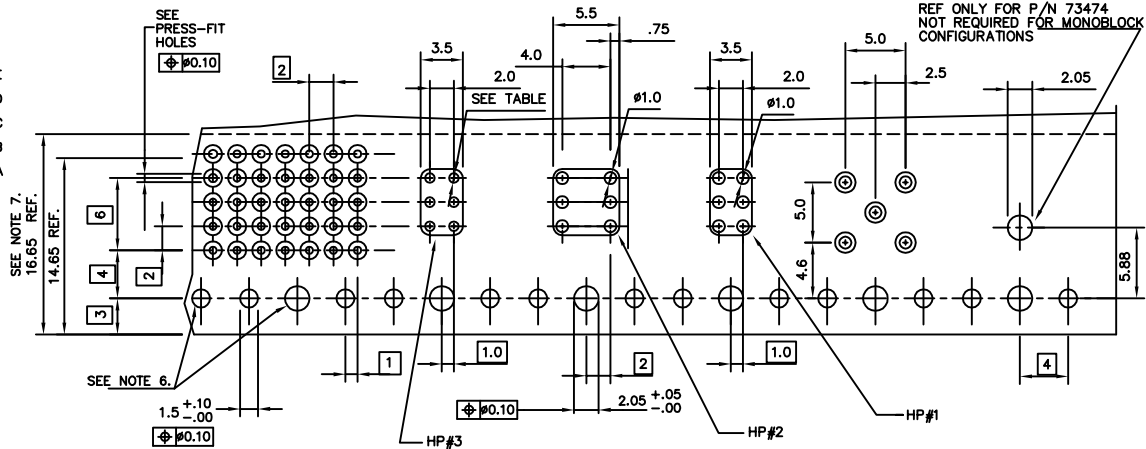
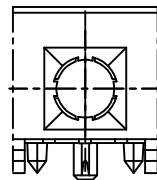
FOR ILLUSTRATION PURPOSES



[PM] POWER MODULE



[HM] HYBRID MODULE

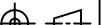



RECOMMENDED HOLE PATTERN,
COMPONENT SIDE.

TABLE 1	
PLATED THRU HOLE REQUIREMENTS	
HOLE DIAMETER AFTER PLATING	0.65-0.80
DRILLED HOLE	0.81-0.86 (0.85 DRILL)
COPPER PLATING	0.025 - 0.05
SnPb PLATING	0.005-0.015

SEE DRAWING 58351
FOR OTHER OPTIONS


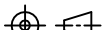

PRODUCT NR:	PLATING CONTACT AREA:	UNDERPLATING
73952-1YYY	0.8 μm GOLD	1.3 μm Ni; MIN.
73952-2YYY	2 μm GOLD	1.3 μm Ni; MIN.
73952-9YYY	0.8 μm GXT	1.3 μm Ni; MIN.
73952-1YYYLF	0.8 μm GOLD	1.3 μm Ni; MIN.
73952-2YYYLF	2 μm GOLD	1.3 μm Ni; MIN.
73952-9YYYLF	0.8 μm GXT	1.3 μm Ni; MIN.

mat'l. code SEE NOTES				tolerances unless otherwise specified			CUSTOMER COPY	FCI www.fciconnect.com			
litr	ecn no	dr	date	linear	.X ±.3		projection 	title 5 ROW R/A HYBRID RECEPTACLE - 60MM	product family METRAL (tm)	code 213	
M					.XX ±.10						
					.XXX ±.050						
				angles	0° ±2'		 scale 1:1	A	73952	sheet 2 of -	
				dr	M.FETROW	6/25/97					
				enrg	C.PENDLETON	6/25/97					
				chr	C.PENDLETON	6/25/97					
				appd	C.PENDLETON	6/25/97					
sheet index	revision sheet										



PRODUCT NO	ASS'Y TYPE	TAIL LENGTH	ROW	30	29	28	27	26	25	24	23	22	21	20	19	18	17	16	15	14	13	12	11	10	9	8	7	6	5	4	3	2	1						
73952-X001 SEE NOTE 11 FOR LEAD FREE OPTIONS	1	3.53	E							X X X X X X X X						X X X X X X X X						X X X X X X X X						X X X X X X X X						X X X X X X X X					
			D																																				
			C																																				
			B																																				
			A																																				
MODULE TYPE				HM						SM						SM						SM						SM											
73952-X002 SEE NOTE 11 FOR LEAD FREE OPTIONS	1	3.53	E							X X X X X X X X						X X X X X X X X						X X X X X X X X						X X X X X X X X						X X X X X X X X					
			D																																				
			C																																				
			B																																				
			A																																				
MODULE TYPE				GM						SM						SM						SM						SM											
73952-X003 SEE NOTE 11 FOR LEAD FREE OPTIONS	3	3.53	E							X X X X X X X X						X X X X X X X X						X X X X X X X X						X X X X X X X X						X X X X X X X X					
			D																																				
			C																																				
			B																																				
			A																																				
MODULE TYPE				HM						SM						SM						SM						SM											
73952-X004 SEE NOTE 11 FOR LEAD FREE OPTIONS	1	3.53	E							X X X X X X X X						X X X X X X X X						X X X X X X X X						X X X X X X X X											
			D																																				
			C																																				
			B																																				
			A																																				
MODULE TYPE				SM						SM						SM						SM						GM											
73952-X005 SEE NOTE 11 FOR LEAD FREE OPTIONS	1	3.53	E							X X X X X X X X						X X X X X X X X						X X X X X X X X						X X X X X X X X											
			D																																				
			C																																				
			B																																				
			A																																				
MODULE TYPE				GM						SM						SM						SM						GM											

LOAD PATTERN	
X	LOADED
—	NOT LOADED
HP#1	PWR. CONN. LOADED
HP#3	PWR. CONN. LOADED

mat'l. code SEE NOTES				tolerances unless otherwise specified		CUSTOMER COPY		FCI  www.fciconnect.com	
ltr	ecn no	dr	date	linear	.X ±.3	projection 	title 5 ROW R/A HYBRID RECEPTACLE - 60MM	product family METRAL (tm)	code 213
M					.XX ±.10				
					.XXX ±.050				
				angles	0° ±2°		scale 1:1	A	73952
				dr	M.FETROW 6/25/97				
				enrg	C.PENDLETON 6/25/97				
				chr	C.PENDLETON 6/25/97	sheet 3 of -			
				appd	C.PENDLETON 6/25/97				
sheet index	revision sheet								

cage code
22526