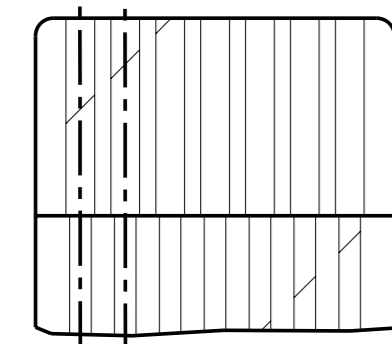


7361Z0001SxxLF

Lead Free Version (Optional)

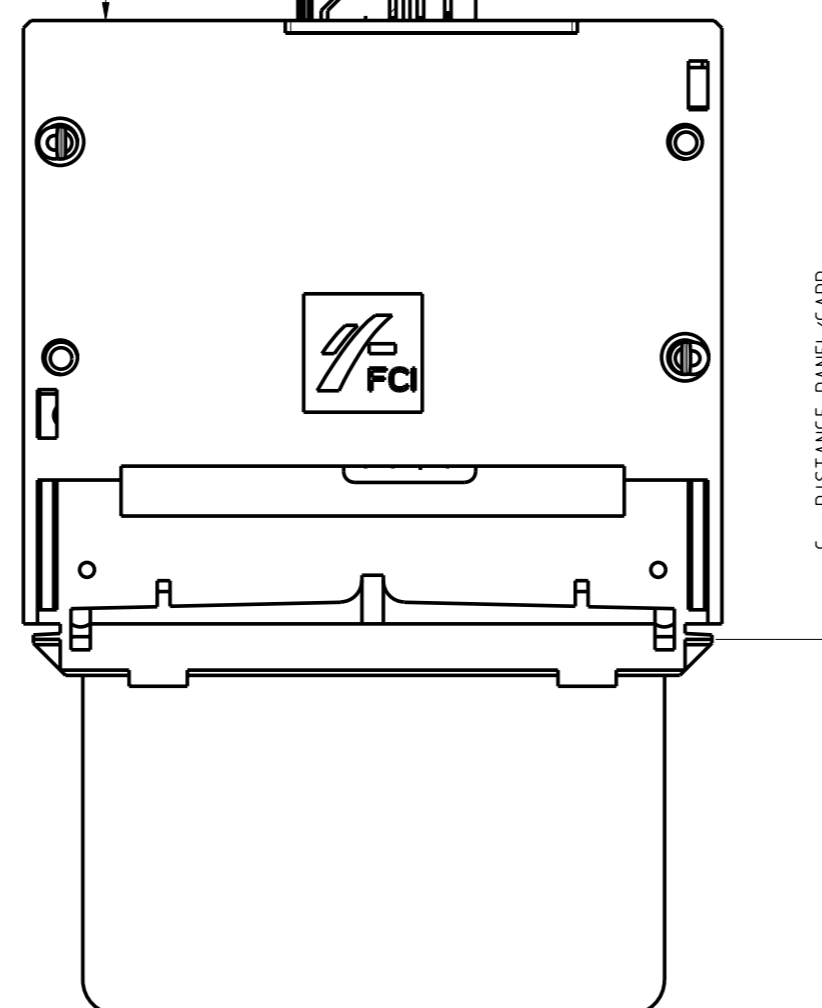
Customer Specificity

B : TERMINAL PITCH



DETAIL A
SCALE 5/1

A : FLEX LENGTH



C : DISTANCE PANEL/CARD

SCALE 19/15

SCALE 3/2

GENERAL

This Smart Card Reader uses a sliding contact technology.
It has been designed for easy mounting on metal panel.

ELECTRICAL PROPERTIES

Insulation resistance : 5000 M
Dielectric withstanding : 750 VAC
Current carrying capacity : 10 μ A min. 1A max.
Contact resistance : 100 m
Card sensor type : Blade switch normally closed

MECHANICAL PROPERTIES

EMV compatible and according to ISO 7816-2
Contact normal force : between 0.2 N to 0.6 N per contact
Insertion force : 10 N max.
Withdrawal force : 1 N min.
Max. number of mating operations : 10000 card insertions.

CAPACITOR :

100nF, chip size 0805 in (2012 mm), Y5V, 25V or 50V

READER MATERIAL

Housing : Thermoplastique, 30% GF, Colour black, Rated UL94V0
Contacts and switch : Phosphor bronze
Plating : precoat Nickel 2.5 μ m min. all over
Gold 0.2 μ m min. on contacts areas
SnPB 3 μ m min. on termination contacts for Leaded version
Matte Sn 3 μ on termiantion end for Leadfree version

ENVIRONMENT

Operating temperature : -20 °C / +70 °C
Storage temperature : -40 °C / +85 °C
Panel thickness : 0.8+-0.1 mm


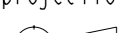


PACKAGING

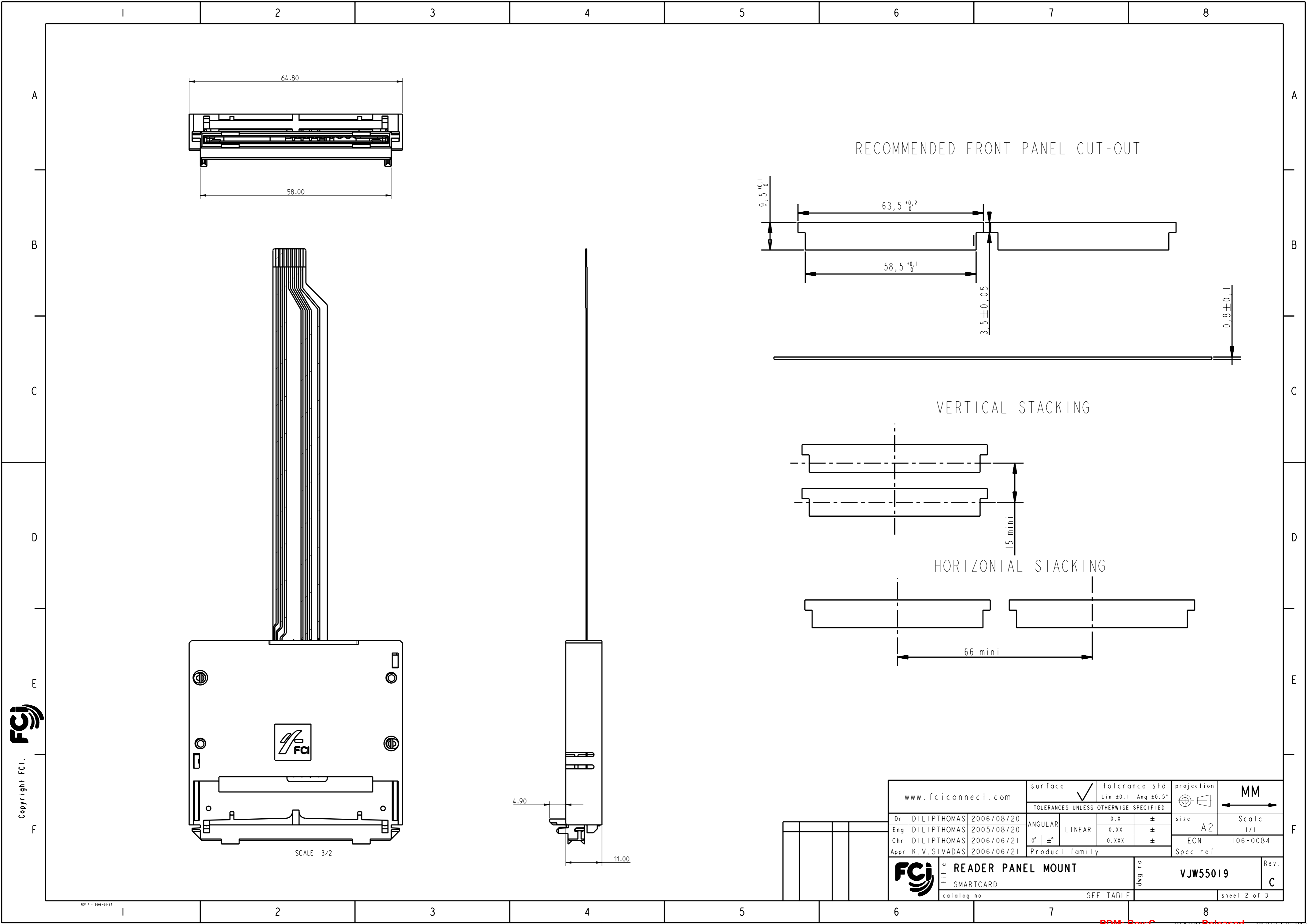
Trays
Packaging specification : VGN11646

LEAD FREE VERSION:

"This product meets European Union Directives and other country regulations as described in GS-22-008"

The housing will withstand exposure to 260°C peak temperature for 10seconds in a wave solder application with a 1.6mm minimum thick circuit board.
Use protective adhesive tape (Kapton or Teflon) or protective metallic devices on the areas which are directly exposed to wave soldering as it is used in classical leaded wave soldering

www.fciconnect.com				surface 		tolerance std Lin ± 0.1 Ang $\pm 0.5^\circ$				MM 							
				TOLERANCES UNLESS OTHERWISE SPECIFIED													
Dr		DILIPHTHOMAS		2006/08/20		ANGULAR		LINEAR		0.X		\pm		size		Scale	
Eng		DILIPHTHOMAS		2005/08/20						0.XX		\pm		A2		1/1	
Chr		DILIPHTHOMAS		2006/06/21		0° \pm °		0.XXX		\pm		ECN		106-0084			
Appr		K.V.SIVADAS		2006/06/21		Product family								Spec ref			
		title		READER PANEL MOUNT								dwg no		VJW55019		Rev	
		SMARTCARD															
		catalog no		SEE TABLE										sheet 1 of 3			



Copyright FCI.

REV F - 2006-04-17

www.fciconnect.com			surface	✓	tolerance std	Lin ± 0.1 Ang $\pm 0.5^\circ$	projection	MM
			TOLERANCES UNLESS OTHERWISE SPECIFIED					
Dr	DILIPTHOMAS	2006/08/20	ANGULAR		0.X	±	size	Scale
Eng	DILIPTHOMAS	2005/08/20		LINEAR	0.XX	±	A2	1/1
Chr	DILIPTHOMAS	2006/06/21	0° ±°		0.XXX	±	ECN	106-0084
Appr	K.V.SIVADAS	2006/06/21	Product family				Spec ref	
FCI			title			READER PANEL MOUNT		
			SMARTCARD			VJW55019		
			catalog no			SEE TABLE		
			dwg no			sheet 2 of 3		
			Rev.			C		

	I	2	3	4	5	6	7	8																																																																																																																																																																			
A	<div>7x61Z0001SxxLF</div> <div>LIST OF PART NUMBERS</div> <div>X=3, STANDARD TRAY X=5, ANTISTATIC TRAY</div> <div>Lead Free Version (Optional)</div> <div>Customer Specificity</div>								A																																																																																																																																																																		
B	<table><tr><th>PRODUCT NUMBER</th><th>A: FLEX LENGTH (mm)</th><th>B:TERMINAL PITCH (mm)</th><th>NUMBER OF TRACKS</th><th>FLEX FORM</th><th>CAPACITOR NUMBER</th><th>CONTACT NUMBER</th><th>C: DISTANCE PANEL/CARD (mm)</th><th>PACKING TYPE</th></tr><tr><td>7361Z0001S13</td><td>96</td><td>1</td><td>10</td><td>STRAIGHT</td><td>2</td><td>8 : ISO</td><td>35</td><td>A</td></tr><tr><td>7361Z0001S14</td><td>101</td><td>1</td><td>10</td><td>STRAIGHT</td><td>2</td><td>16ISO+AFNOR</td><td>35</td><td>A</td></tr><tr><td>7361Z0001S15</td><td>96</td><td>1</td><td>10</td><td>STRAIGHT</td><td>2</td><td>8 : ISO</td><td>25</td><td>A</td></tr><tr><td>7361Z0001S22</td><td>156</td><td>1.25</td><td>10</td><td>STRAIGHT</td><td>1</td><td>16ISO+AFNOR</td><td>35</td><td>A</td></tr><tr><td>7361Z0001S29</td><td>58</td><td>1.25</td><td>10</td><td>STRAIGHT</td><td>NONE</td><td>8 : ISO</td><td>35</td><td>A</td></tr><tr><td>7561Z0001S29</td><td>58</td><td>1.25</td><td>10</td><td>STRAIGHT</td><td>NONE</td><td>8 : ISO</td><td>35</td><td>A</td></tr><tr><td>7361Z0001S31</td><td>58</td><td>1.25</td><td>10</td><td>STRAIGHT</td><td>NONE</td><td>8 : ISO</td><td>25</td><td>A</td></tr><tr><td>7361Z0001S33</td><td>58</td><td>1.25</td><td>10</td><td>STRAIGHT</td><td>1</td><td>8 : ISO</td><td>35</td><td>A</td></tr><tr><td>7361Z0001S35</td><td>120</td><td>1.25</td><td>10</td><td>STRAIGHT</td><td>1</td><td>8 : ISO</td><td>35</td><td>A</td></tr><tr><td>7361Z0001S36</td><td>120</td><td>1.25</td><td>10</td><td>STRAIGHT</td><td>1</td><td>8 : ISO</td><td>15</td><td>B</td></tr><tr><td>7361Z0001S37</td><td>58</td><td>1.25</td><td>10</td><td>STRAIGHT</td><td>NONE</td><td>8 : ISO</td><td>15</td><td>B</td></tr><tr><td>7361Z0001S38</td><td>85</td><td>1.25</td><td>10</td><td>STRAIGHT</td><td>1</td><td>16ISO+AFNOR</td><td>35</td><td>A</td></tr><tr><td>7361Z0001S39</td><td>58</td><td>1.25</td><td>10</td><td>STRAIGHT</td><td>NONE</td><td>8 : ISO</td><td>35</td><td>A</td></tr><tr><td>7361Z0001S40</td><td>118</td><td>1.25</td><td>7</td><td>STRAIGHT</td><td>1</td><td>8 : ISO</td><td>35</td><td>C</td></tr><tr><td>7361Z0001S41</td><td>118</td><td>1.25</td><td>7</td><td>STRAIGHT</td><td>1</td><td>8 : ISO</td><td>15</td><td>B</td></tr><tr><td>7361Z0001S42</td><td>60</td><td>1.25</td><td>7</td><td>STRAIGHT</td><td>NONE</td><td>8 : ISO</td><td>25</td><td>A</td></tr><tr><td>7361Z0001S43</td><td>58</td><td>1.25</td><td>10</td><td>STRAIGHT</td><td>1</td><td>8 : ISO</td><td>25</td><td>A</td></tr></table>								PRODUCT NUMBER	A: FLEX LENGTH (mm)	B:TERMINAL PITCH (mm)	NUMBER OF TRACKS	FLEX FORM	CAPACITOR NUMBER	CONTACT NUMBER	C: DISTANCE PANEL/CARD (mm)	PACKING TYPE	7361Z0001S13	96	1	10	STRAIGHT	2	8 : ISO	35	A	7361Z0001S14	101	1	10	STRAIGHT	2	16ISO+AFNOR	35	A	7361Z0001S15	96	1	10	STRAIGHT	2	8 : ISO	25	A	7361Z0001S22	156	1.25	10	STRAIGHT	1	16ISO+AFNOR	35	A	7361Z0001S29	58	1.25	10	STRAIGHT	NONE	8 : ISO	35	A	7561Z0001S29	58	1.25	10	STRAIGHT	NONE	8 : ISO	35	A	7361Z0001S31	58	1.25	10	STRAIGHT	NONE	8 : ISO	25	A	7361Z0001S33	58	1.25	10	STRAIGHT	1	8 : ISO	35	A	7361Z0001S35	120	1.25	10	STRAIGHT	1	8 : ISO	35	A	7361Z0001S36	120	1.25	10	STRAIGHT	1	8 : ISO	15	B	7361Z0001S37	58	1.25	10	STRAIGHT	NONE	8 : ISO	15	B	7361Z0001S38	85	1.25	10	STRAIGHT	1	16ISO+AFNOR	35	A	7361Z0001S39	58	1.25	10	STRAIGHT	NONE	8 : ISO	35	A	7361Z0001S40	118	1.25	7	STRAIGHT	1	8 : ISO	35	C	7361Z0001S41	118	1.25	7	STRAIGHT	1	8 : ISO	15	B	7361Z0001S42	60	1.25	7	STRAIGHT	NONE	8 : ISO	25	A	7361Z0001S43	58	1.25	10	STRAIGHT	1	8 : ISO	25	A	B
PRODUCT NUMBER	A: FLEX LENGTH (mm)	B:TERMINAL PITCH (mm)	NUMBER OF TRACKS	FLEX FORM	CAPACITOR NUMBER	CONTACT NUMBER	C: DISTANCE PANEL/CARD (mm)	PACKING TYPE																																																																																																																																																																			
7361Z0001S13	96	1	10	STRAIGHT	2	8 : ISO	35	A																																																																																																																																																																			
7361Z0001S14	101	1	10	STRAIGHT	2	16ISO+AFNOR	35	A																																																																																																																																																																			
7361Z0001S15	96	1	10	STRAIGHT	2	8 : ISO	25	A																																																																																																																																																																			
7361Z0001S22	156	1.25	10	STRAIGHT	1	16ISO+AFNOR	35	A																																																																																																																																																																			
7361Z0001S29	58	1.25	10	STRAIGHT	NONE	8 : ISO	35	A																																																																																																																																																																			
7561Z0001S29	58	1.25	10	STRAIGHT	NONE	8 : ISO	35	A																																																																																																																																																																			
7361Z0001S31	58	1.25	10	STRAIGHT	NONE	8 : ISO	25	A																																																																																																																																																																			
7361Z0001S33	58	1.25	10	STRAIGHT	1	8 : ISO	35	A																																																																																																																																																																			
7361Z0001S35	120	1.25	10	STRAIGHT	1	8 : ISO	35	A																																																																																																																																																																			
7361Z0001S36	120	1.25	10	STRAIGHT	1	8 : ISO	15	B																																																																																																																																																																			
7361Z0001S37	58	1.25	10	STRAIGHT	NONE	8 : ISO	15	B																																																																																																																																																																			
7361Z0001S38	85	1.25	10	STRAIGHT	1	16ISO+AFNOR	35	A																																																																																																																																																																			
7361Z0001S39	58	1.25	10	STRAIGHT	NONE	8 : ISO	35	A																																																																																																																																																																			
7361Z0001S40	118	1.25	7	STRAIGHT	1	8 : ISO	35	C																																																																																																																																																																			
7361Z0001S41	118	1.25	7	STRAIGHT	1	8 : ISO	15	B																																																																																																																																																																			
7361Z0001S42	60	1.25	7	STRAIGHT	NONE	8 : ISO	25	A																																																																																																																																																																			
7361Z0001S43	58	1.25	10	STRAIGHT	1	8 : ISO	25	A																																																																																																																																																																			
C	<div>PACKING TYPE:</div> <div>A : 28 CONNECTORS / TRAY 420 CONNECTORS / SHIPPING BOX</div> <div>B : 25 CONNECTORS / BLOCK 500 CONNECTORS / SHIPPING BOX</div> <div>C : 12 CONNECTORS / TRAY 120 CONNECTORS / SHIPPING BOX</div>								C																																																																																																																																																																		
D									D																																																																																																																																																																		
E									E																																																																																																																																																																		
F	<div><div>FCI</div><div>Copyright FCI.</div><div>REV F - 2006-04-17</div></div> <div><div>www.fciconnect.com</div><div><div>surface</div><div>tolerance std</div><div>projection</div><div>MM</div></div><div><div>TOLERANCES UNLESS OTHERWISE SPECIFIED</div><div><div>Dr</div><div>Eng</div><div>Chr</div><div>Appr</div></div><div><div>DILIPTHOMAS</div><div>DILIPTHOMAS</div><div>DILIPTHOMAS</div><div>K.V.SIVADAS</div></div><div><div>2006/08/20</div><div>2005/08/20</div><div>2006/06/21</div><div>2006/06/21</div></div><div><div>ANGULAR</div><div>LINEAR</div><div>0° ±°</div><div>Product family</div></div><div><div>0.X</div><div>0.XX</div><div>0.XXX</div><div>size</div></div><div><div>±</div><div>±</div><div>±</div><div>A2</div></div><div><div>ECN</div><div>Spec ref</div><div>106-0084</div></div></div><div><div>FCI</div><div>title</div><div>SMARTCARD</div><div>catalog no</div></div><div><div>READER PANEL MOUNT</div><div>SEE TABLE</div></div><div><div>dwg no</div><div>Rev.</div><div>VJW55019</div><div>C</div></div><div><div>sheet 3 of 3</div></div></div>								F																																																																																																																																																																		
	I	2	3	4	5	6	7	8																																																																																																																																																																			