



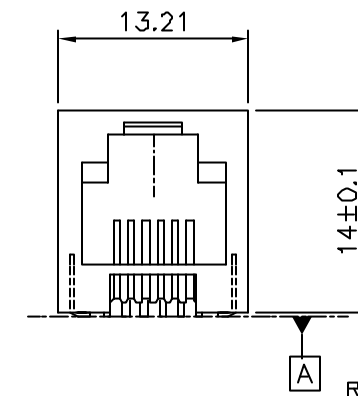
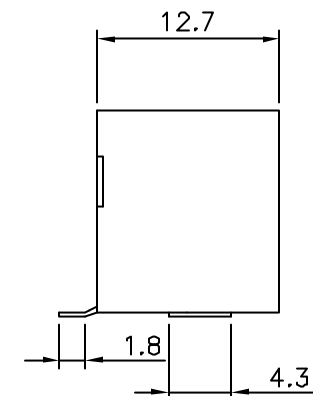
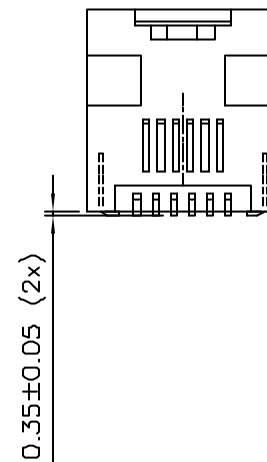
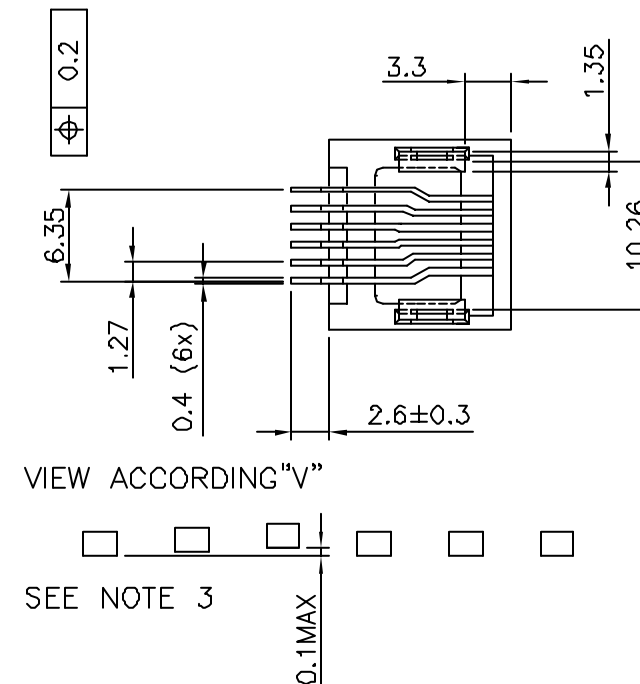
FCIconnect.com

Copyright FCI

PRODUCT NUMBER  
73326-XXXLFPLATING OPTION  
1= GXT 0.76  $\mu\text{m}$   
3= GOLD 0.76  $\mu\text{m}$   
5= GOLD 1.27  $\mu\text{m}$ PACKAGE OPTION  
1= TAPE ON REEL  
2= TUBETERMINAL LOADING  
1= FULLY LOADED  
2= POS 2,3,4,5  
3= POS 1,2,5,6WHEN NEEDED, SUFFIX LETTER "LF"  
INDICATES THE PRODUCT IS RoHS  
COMPATIBLE, SEE NOTE 4.

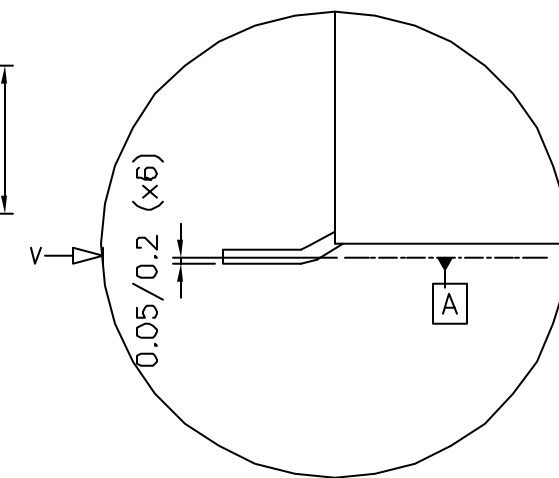
## NOTES:

- 1- MATERIAL: HOUSING: HIGH TEMP. NYLON, COLOUR BLACK.  
TERMINAL: PHOSPHOR BRONZE.
- 2 - PLATING: CONTACT AREA: SEE TABLE.  
SOLDER TAIL : 90/10 SnPb 2 $\mu\text{m}$  MIN.  
WHEN SUFFIX "LF" IS REQUIRED, 2 $\mu\text{m}$  MIN MATTE  
TIN OVER 1.27 MIN Ni IS SUPPLIED INSTEAD OF SnPb.  
NO RAW EDGES EXEPT SOLDER TAIL TIPS
- 3 - SOLDER TAILS COPLANARITY : 0.1 mm
- 4 - RoHS COMPATIBLE PRODUCT SPECIFICATIONS
- a - PLATING:
- "LF" MEANS THE PRODUCT IS LEAD-FREE,  
2 $\mu\text{m}$  MINIMUM MATTE TIN OVER 1.27 $\mu\text{m}$   
MINIMUM NICKEL UNDERPLATE.
- b - MANUFACTURING PROCESS COMPATIBILITY
- THE HOUSING WILL WITHSTAND EXPOSURE TO  
245°C PEAK TEMPERATURE FOR 30 SECONDS  
MAX IN A CONVECTION, INFRA-RED OR VAPOR  
PHASE OR REFLOW OVEN.
- c - LABELING:
- MEETS PACKAGING SPECS AS PER GS-14-920
- d - LEGAL STATEMENT: SEE GS-22-008

REFERENCE PLAN  
DEFINED BY THE  
2 HOLD DOWN  
BEARING SURFACE

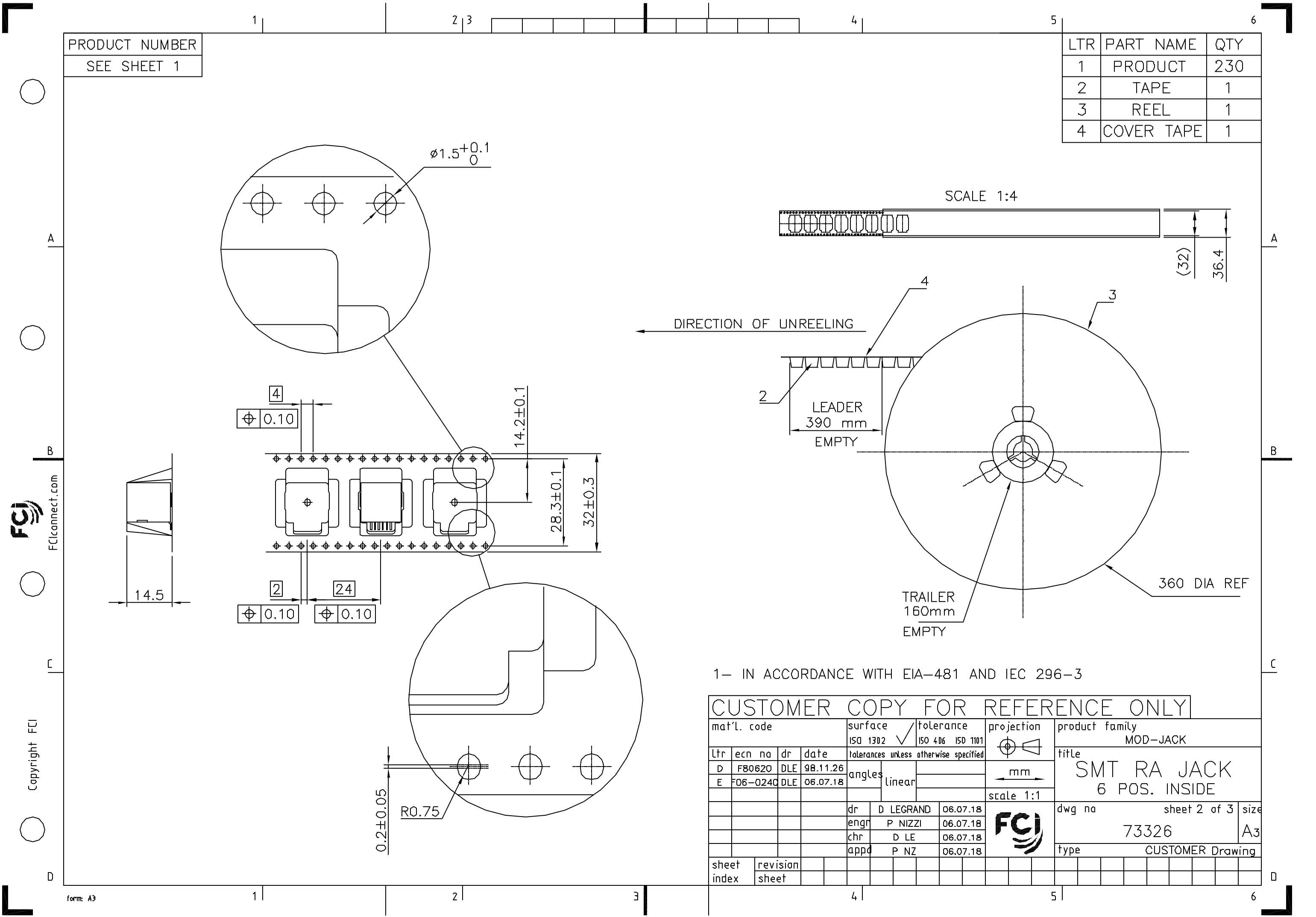
VIEW ACCORDING "V"

SEE NOTE 3



## CUSTOMER COPY FOR REFERENCE ONLY

mat'l. code				surface	tolerance	projection	product family			
				ISO 1302	ISO 406 ISO 1101		MOD JACK			
ltr	ecn na	dr	date	tolerances unless otherwise specified		mm	title			
H	F06-0240	DLE	06.07.18	angles	linear					
C	F80608	DLE	98.08.19	±2'		scale 2:1	SMT RA JACK 6 POS INSIDE			
D	F80620	DLE	98.11.26	dr	D LEGRAND	04.10.18				
E	F03020	DLE	03.01.27	enrg	P NIZZI	04.10.18	dwg no			
F	F04-0363	DLE	04.10.18	chr	D LEGRAND	04.10.18				
G	F05-0247	DLE	05.09.12	appd	P NZ	04.10.18	73326			
sheet		revision	H	E	B					
index		sheet	1	2	3		type			
							CUSTOMER Drawing			
							sheet 1 of 3			
							A3			



PRODUCT NUMBER  
SEE SHEET 1

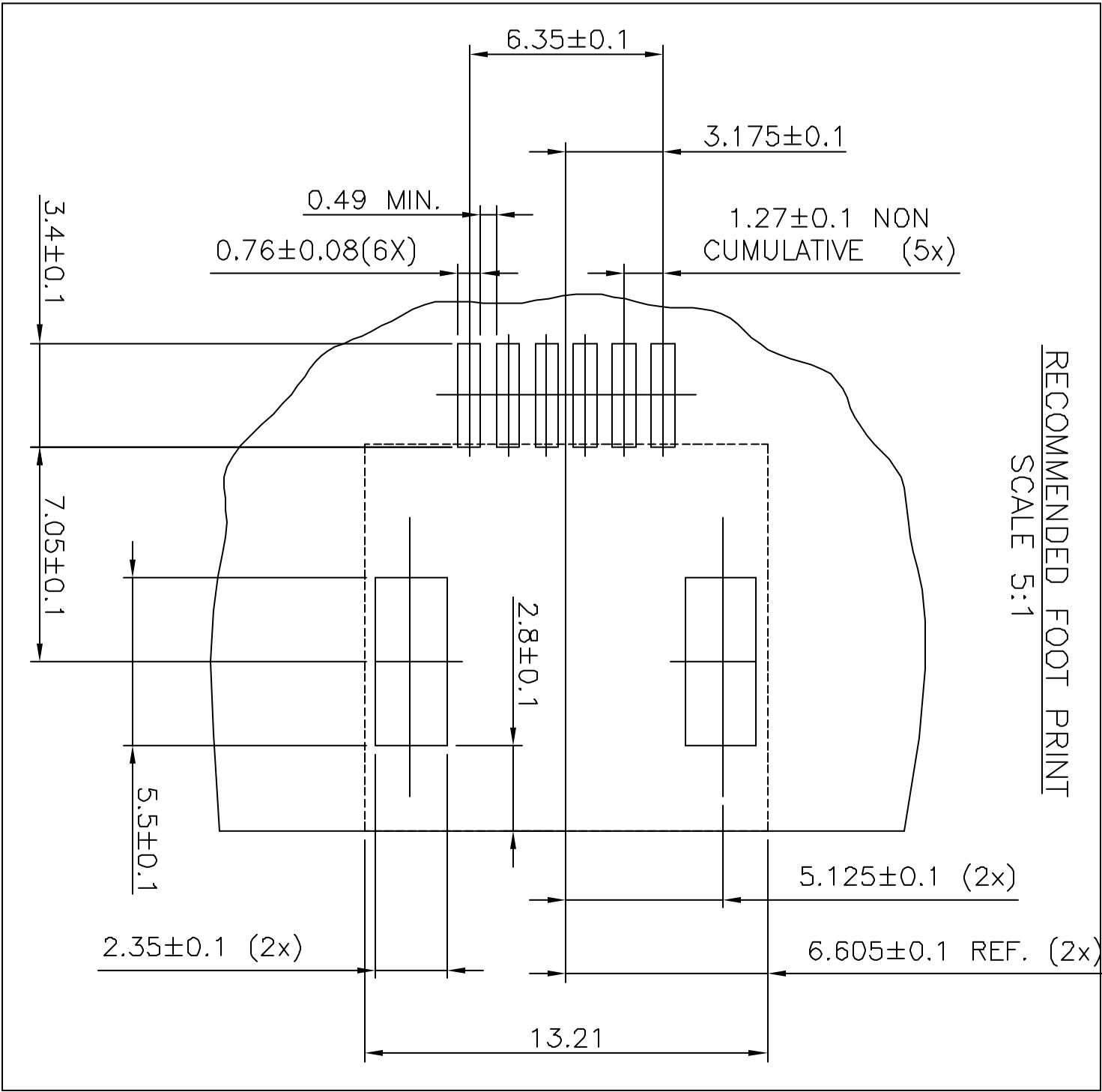
LTR	PART NAME	QTY
1	PRODUCT	230
2	TAPE	1
3	REEL	1
4	COVER TAPE	1

1- IN ACCORDANCE WITH EIA-481 AND IEC 296-3

CUSTOMER COPY FOR REFERENCE ONLY																					
mat'l. code				surface		tolerance		projection		product family											
				ISO 1302		ISO 406 ISO 1101				MOD-JACK											
Ltr	ecn no		dr	date		tolerances unless otherwise specified						title									
D	F80620		DLE	98.11.26		angles				mm		SMT RA JACK									
E	F06-0240		DLE	06.07.18		linear						6 POS. INSIDE									
										scale 1:1											
				dr		D LEGRAND		06.07.18				dwg no				sheet 2 of 3				size	
				engr		P NIZZI		06.07.18				73326				A3					
				chr		D LE		06.07.18													
				appd		P NZ		06.07.18				type								CUSTOMER Drawing	
sheet index		revision sheet																			



2



CUSTOMER COPY FOR REFERENCE ONLY

mat'l. code				surface			tolerance			projection		product family							
				ISO 1302			ISO 406 ISO 1101					MOD JACK							
ltr				ecn no		dr		date		tolerances unless otherwise specified		title							
A				F04-0363		DLE		04.10.18		angles		±0.13		SMT RA JACK					
B				F06-0240		DLE		06.07.18		linear				6 POS INSIDE					
										±2°									
										dr		D LEGRAND		04.10.18					
										engr		P NIZZI		04.10.18					
										chr		D LEGRAND		04.10.18					
										appd		P NZ		04.10.18					
sheet index		revision																	
D																			

form: A4

1

2