



FCIconnect.com

Copyright FCI

PRODUCT NUMBER  
73325-XXXLF

PLATING OPTION  
1= GXT 0.76  $\mu\text{m}$   
3= GOLD 0.76  $\mu\text{m}$   
5= GOLD 1.27  $\mu\text{m}$

PACKAGE OPTION  
1= TAPE ON REEL  
2= TUBE

TERMINAL LOADING  
1= FULLY LOADED  
2= POS 1,2,7,8  
3= POS 3,4,5,6

WHEN NEEDED, SUFFIX LETTER "LF"  
INDICATES THE PRODUCT IS RoHS  
COMPATIBLE, SEE NOTE 4.

NOTES:

- 1- MATERIAL: HOUSING: HIGH TEMP. NYLON, COLOUR BLACK.  
TERMINAL: PHOSPHOR BRONZE.
- 2 - PLATING: CONTACT AREA: SEE TABLE.  
SOLDER TAIL : 90/10 SnPb 2 $\mu\text{m}$  MIN.  
WHEN SUFFIX "LF" IS REQUIRED, 2 $\mu\text{m}$  MIN MATTE  
TIN OVER 1.27 MIN Ni IS SUPPLIED INSTEAD OF SnPb.  
NO RAW EDGES EXEPT SOLDER TAIL TIPS
- 3 - SOLDER TAILS COPLANARITY : 0.1 mm
- 4 - RoHS COMPATIBLE PRODUCT SPECIFICATIONS

a - PLATING:

- "LF" MEANS THE PRODUCT IS LEAD-FREE,  
2 $\mu\text{m}$  MINIMUM MATTE TIN OVER 1.27 $\mu\text{m}$   
MINIMUM NICKEL UNDERPLATE.

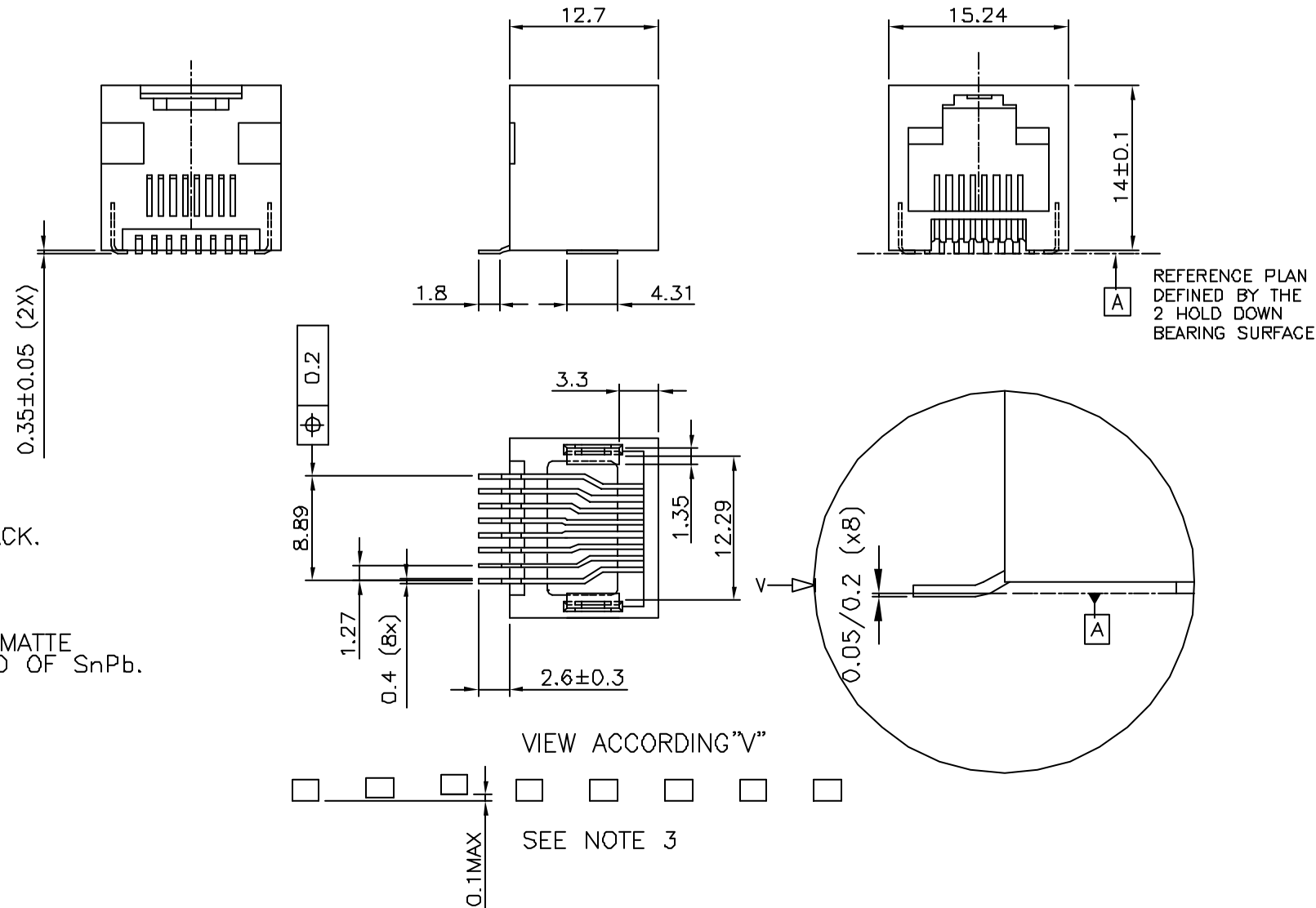
b - MANUFACTURING PROCESS COMPATIBILITY

- THE HOUSING WILL WITHSTAND EXPOSURE TO  
245°C PEAK TEMPERATURE FOR 30 SECONDS  
MAX IN A CONVECTION, INFRA-RED OR VAPOR  
PHASE OR REFLOW OVEN.

c - LABELING:

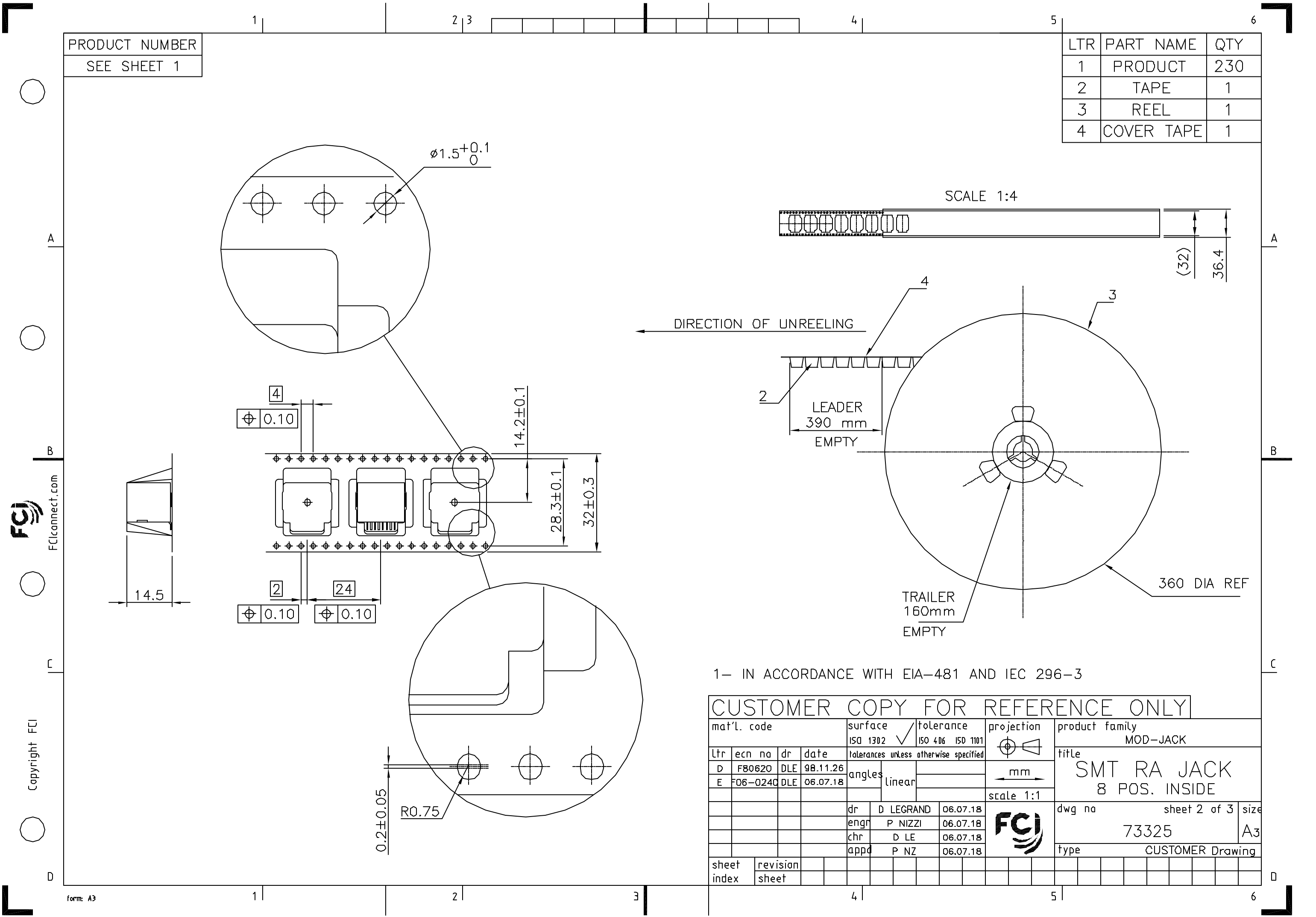
- MEETS PACKAGING SPECS AS PER GS-14-920

d - LEGAL STATEMENT: SEE GS-22-008



CUSTOMER COPY FOR REFERENCE ONLY

mat'l. code				surface	tolerance	projection	product family			
				ISO 1302	ISO 406 ISO 1101		MOD JACK			
ltr	ecn no	dr	date	tolerances unless otherwise specified		mm	title			
H	F06-0240	DLE	06.07.18	angles	linear					
C	F80608	DLE	98.08.19	±2'		scale 2:1	SMT RA JACK 8 POS INSIDE			
D	F80620	DLE	98.11.26	dr	D LEGRAND	04.10.18				
E	F03020	DLE	03.01.27	enrg	P NIZZI	04.10.18	dwg no			
F	F04-0363	DLE	04.10.18	chr	D LEGRAND	04.10.18				
G	F05-0247	DLE	05.09.12	appd	P NZ	04.10.18	73325			
sheet		revision	H	E	B					
index		sheet	1	2	3		type			
							CUSTOMER Drawing			
							sheet 1 of 3			
							size			
							A3			



PRODUCT NUMBER  
SEE SHEET 1

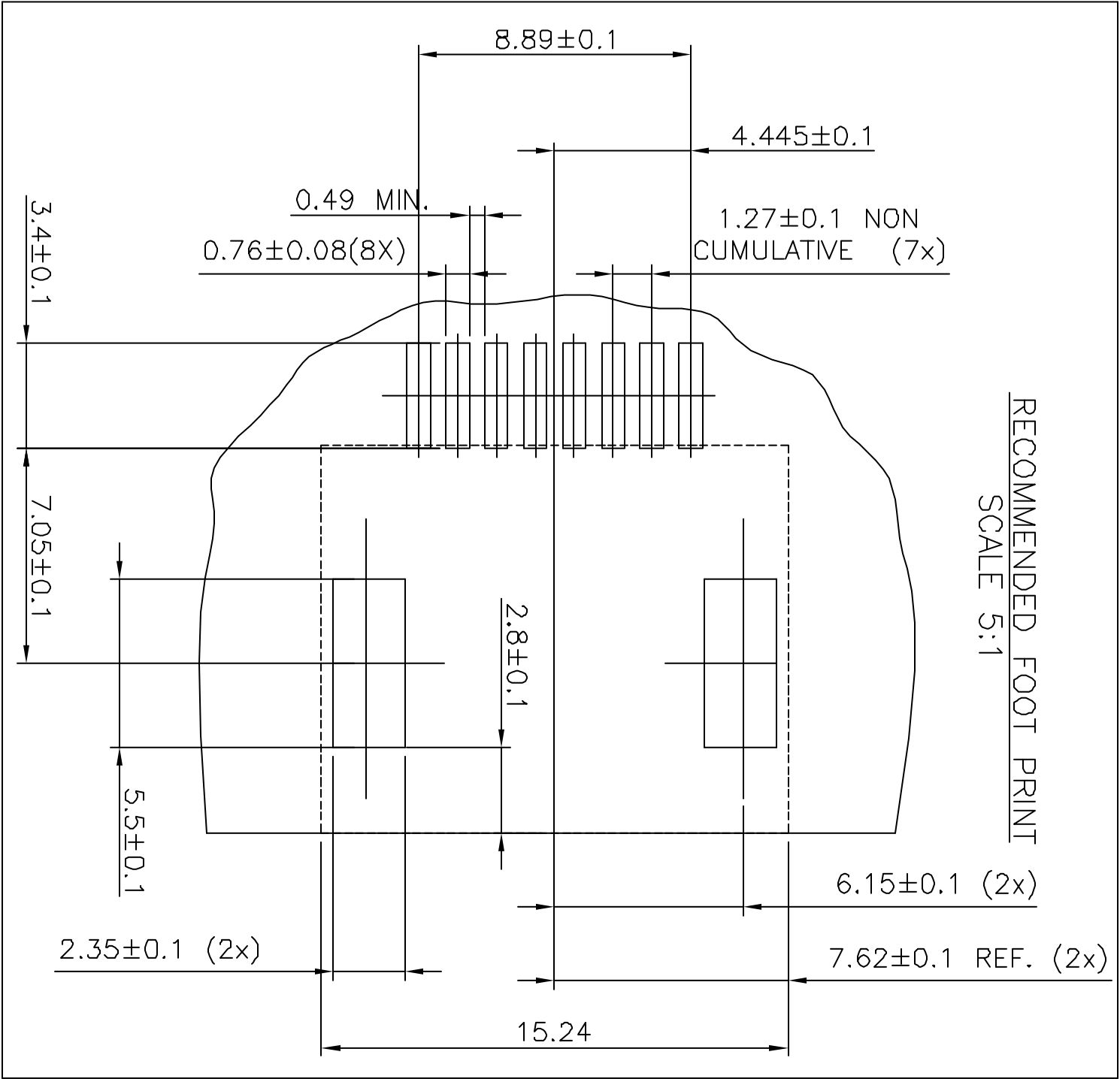
LTR	PART NAME	QTY
1	PRODUCT	230
2	TAPE	1
3	REEL	1
4	COVER TAPE	1

1- IN ACCORDANCE WITH EIA-481 AND IEC 296-3

CUSTOMER COPY FOR REFERENCE ONLY														
mat'l. code					surface ISO 1302 ✓			tolerance ISO 406 ISO 1101			projection mm		product family MOD-JACK	
Ltr	ecn no	dr	date		tolerances unless otherwise specified								title SMT RA JACK 8 POS. INSIDE	
D	F80620	DLE	98.11.26		angles								dwg no	
E	F06-0240	DLE	06.07.18		linear								sheet 2 of 3	
					dr								size	
					D LEGRAND								A3	
					engr								type	
					P NIZZI								CUSTOMER Drawing	
					chr									
					D LE									
					appd									
					P NZ									
sheet	revision													
index	sheet													



2



CUSTOMER COPY FOR REFERENCE ONLY

mat'l. code				surface			tolerance			projection		product family			
				ISO 1302			ISO 406 ISO 1101					MOD JACK			
ltr	ecn no	dr	date	tolerances unless otherwise specified			±0.13			mm		title			
A	F04-0363	DLE	04.10.18	angles								SMT RA JACK			
B	F06-0240	DLE	06.07.18	linear						scale 2:1		8 POS INSIDE			
				±2°											
				dr			D LEGRAND					dwg no			
				engr			P NIZZI					73325			
				chr			D LEGRAND					sheet 3 of -			
				appd			P NZ					A4			
sheet index		revision										type		CUSTOMER Drawing	