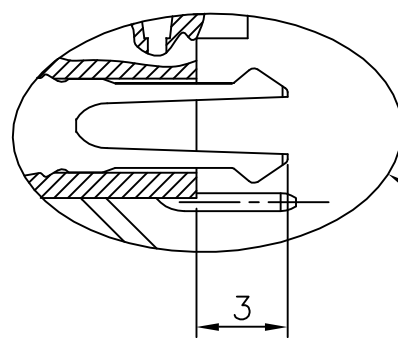
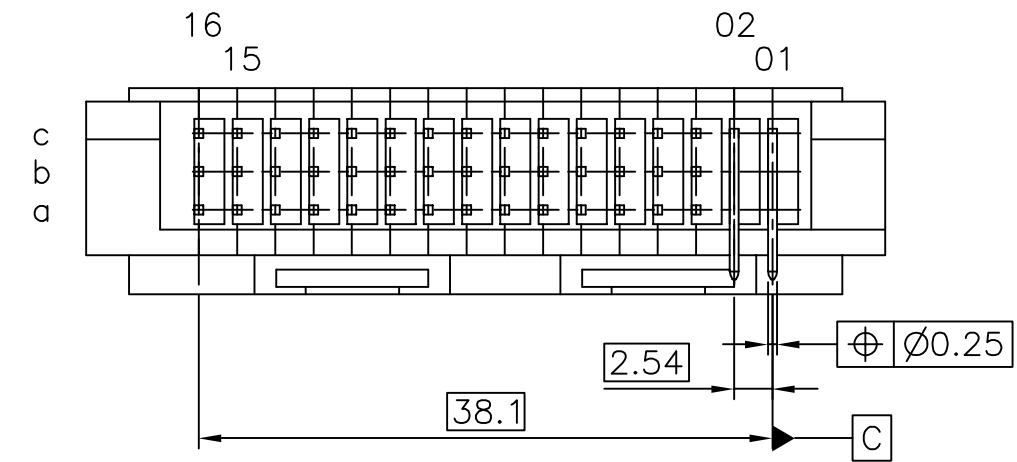
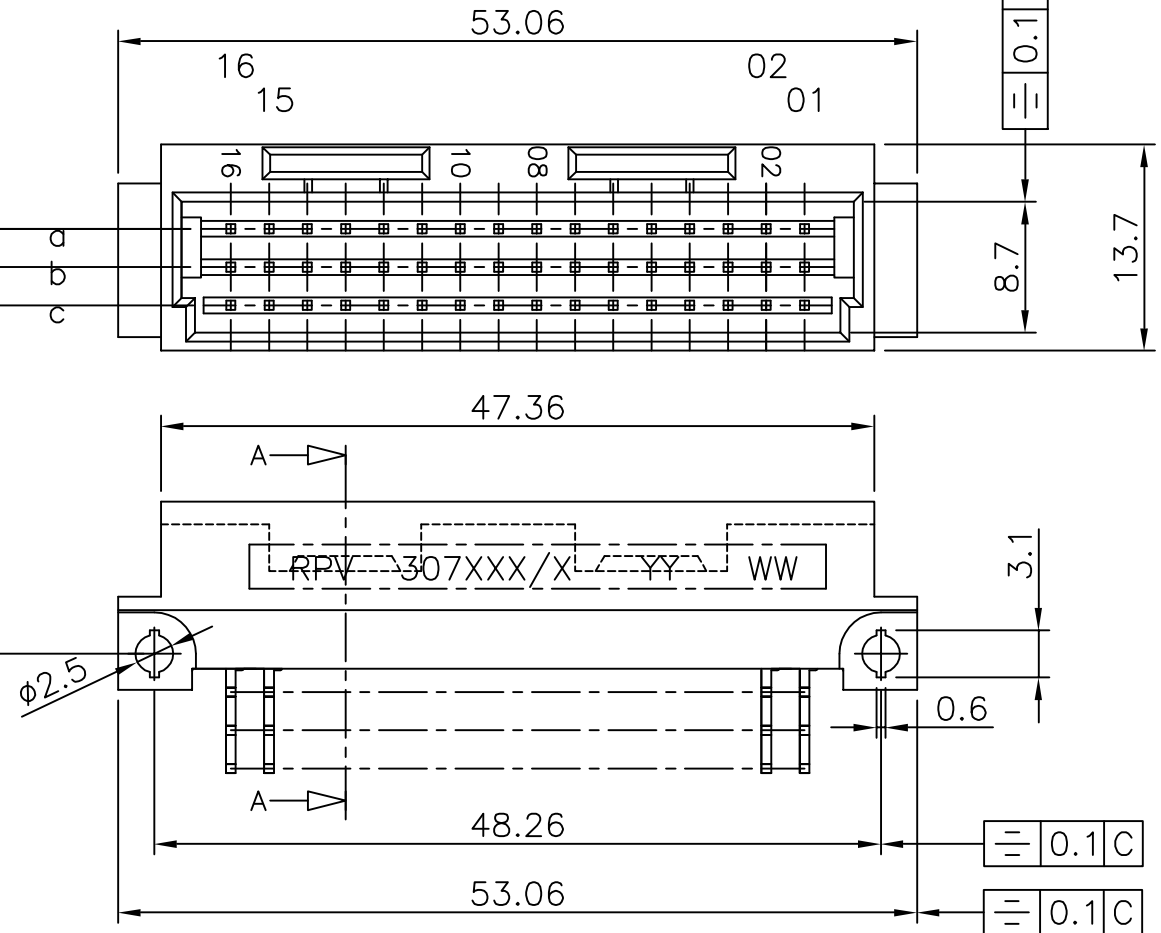
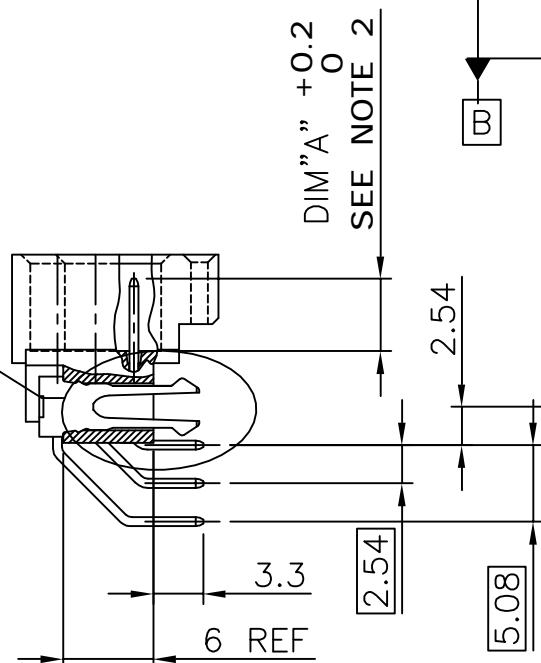
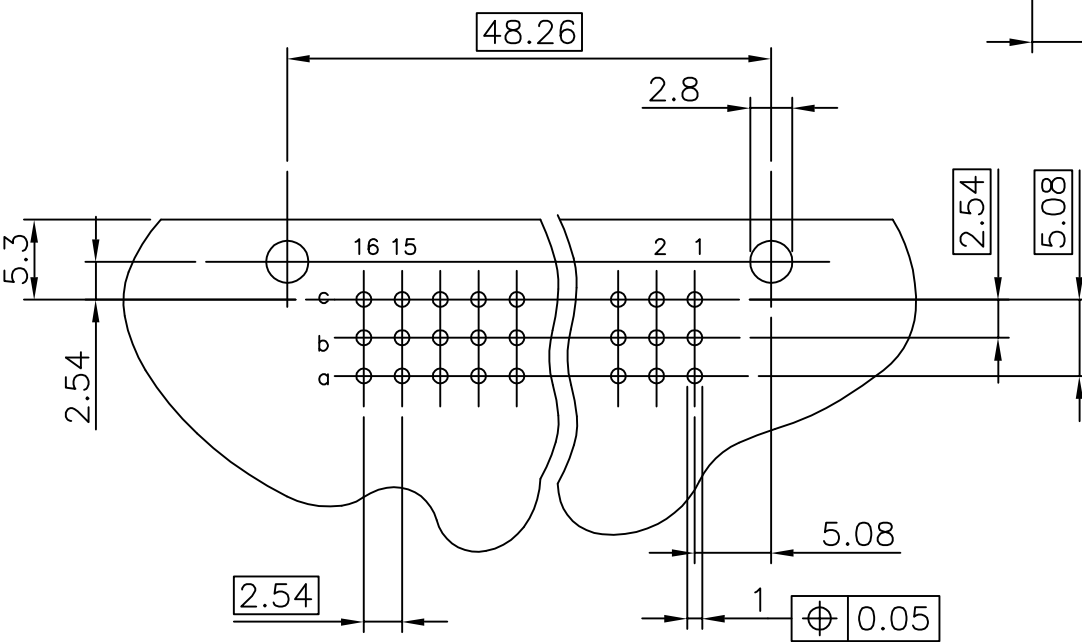


PRODUCT NO SEE SHEET 2



P.C. MOUNTING HOLE PATTERN



NOTES:

1. TIN LEAD PLATING HAS BEEN REPLACED BY PURE MATT TIN PLATING ON THE CONNECTOR TERMINATIONS. NO CHANGE IN THE HOUSING MATERIAL.
2. CUSTOMER NEEDS TO DECIDE & STANDARDIZE ON SUITABLE PROTECTION DEVICES TO PROTECT THE CONNECTOR HOUSINGS FROM THE HIGHER TEMPERATURE REQUIREMENTS OF LEAD FREE WAVE SOLDERING. REGULAR USE OF THESE CONNECTORS TO BE STARTED ONLY AFTER THIS REQUIREMENT HAS BEEN MET.
3. RoHS COMPLIANT LOGO WILL BE PROVIDED ON LABELS AS PER THE GLOBAL PACKAGING SPECIFICATION GS-14-920.

mat'l. code SEE NOTES, SHEET 2				surface ISO 1302 ✓	tolerance ISO 406 ISO 1101	projection mm	product family BACKPANEL			
ltr	ecn no	dr	date	tolerances unless otherwise specified		mm	title DIN HEADER ASSEMBLY			
A	F030287	DLE	2003-10-10	angles	linear					
B	I06-0082	MINI	2006-06-01							
C	I07-0079	KR	2007-06-26							
				dr	D.LEGRAND	2003-07-02	dwg no 72937			
				enr	J.F.NOTTEAU	2003-07-02				
				chr	RAKHEE GEORGE	2007-06-26				
				appd	RAKHEE GEORGE	2007-06-26				
sheet index	revision sheet	C	C				type Product Customer Drawing			
		1	2							



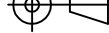
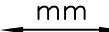

FCIconnect.com

Copyright FCI

PRODUCT NO	CUSTOMER PART NUMBER	PIN "X" PLACED IN POSITION																CLIPS	
		ROW	16	15	14	13	12	11	10	9	8	7	6	5	4	3	2		1
72937-002	RPV 307 202/2	a	X	X	X	X	X	X	X	X	X	X	X	X	X	X	X	X	NO
		b																	
		c	X	X	X	X	X	X	X	X	X	X	X	X	X	X	X	X	
72937-003	RPV 307 202/3	a	X	X	X	X	X	X	X	X	X	X	X	X	X	X	X	X	NO
		b	X	X	X	X	X	X	X	X	X	X	X	X	X	X	X	X	
		c	X	X	X	X	X	X	X	X	X	X	X	X	X	X	X	X	
72937-015		a	X	X	X	X	X	X	X	X	X	X	X	X	X	X	X	X	YES
		b																	
		c	X	X	X	X	X	X	X	X	X	X	X	X	X	X	X	X	

NOTES:

- 1 - MATERIAL BODY : POLYCARBONATE PLASTIC
MATERIAL PIN : PHOSPHOR BRONZE
- 2 - NORMAL CONTACT "X" AND "Δ" DIM A= 4.8
FMLB CONTACT "O" (EARTH PIN) DIM A= 5.4
- 3 - PRINTING CONSISTS OF RPV 307 XXX/X YY WW
CUSTOMER P/N ←
YEAR ←
WEEK ←
- 4 - CLIPS FOR PCB THICKNESS 1.6mm.
- 5 - CONTACT ZONE PLATING : Au OVER Ni
TERMINAL ZONE PLATING : Sn (PURE MATT) OVER Ni
CLIP PLATING : Sn (PURE MATT) OVER Ni

mat'l. code SEE NOTES				surface ISO 1302 ✓		tolerance ISO 406 ISO 1101		projection 		product family BACKPANEL													
ltr	ecn no	dr	date	tolerances unless otherwise specified							title DIN HEADER ASSEMBLY												
A	F030287	DLE	2003-10-10	angles	linear																		
B	I06-0082	MINI	2006-06-01																				
C	I07-0079	KR	2007-06-26																				
				dr	D.LEGRAND		2003-07-02			dwg no				sheet 2 of 2				size					
				engr	J.F.NOTTEAU		2003-07-02			72937				A3									
				chr	RAKHEE GEORGE		2007-06-26																
				appd	RAKHEE GEORGE		2007-06-26																
sheet index		revision sheet																					