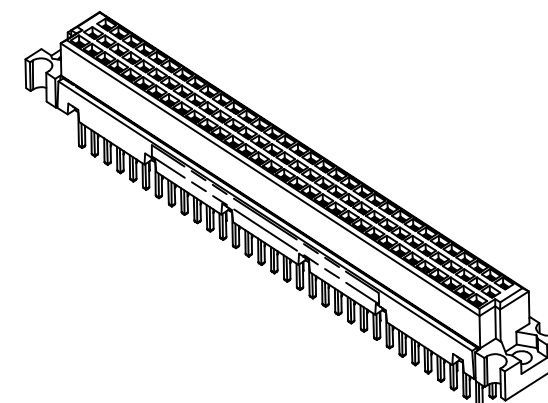
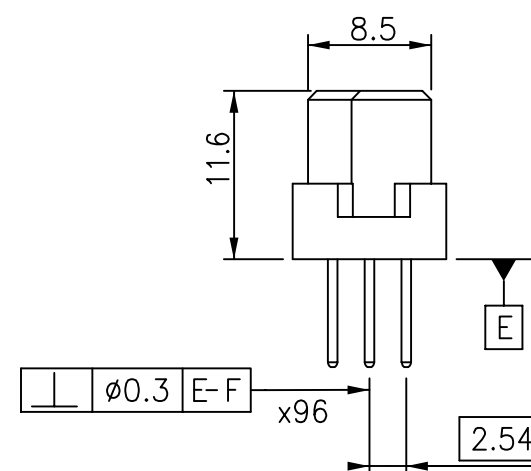


1. LEAD FREE OR RoHS DIRECTIVE LABELING TO BE PROVIDED AS PER GS-14-920.
2. THE "LF" PRODUCT MEETS EUROPEAN UNION DIRECTIVES AND OTHER COUNTRY REGULATIONS AS DESCRIBED IN GS-22-008.



SCALE 1:1



1. BODY MATERIAL : PBTB PLASTIC
2. TERMINAL MATERIAL : PHOSPOR BRONZE

[illegible]

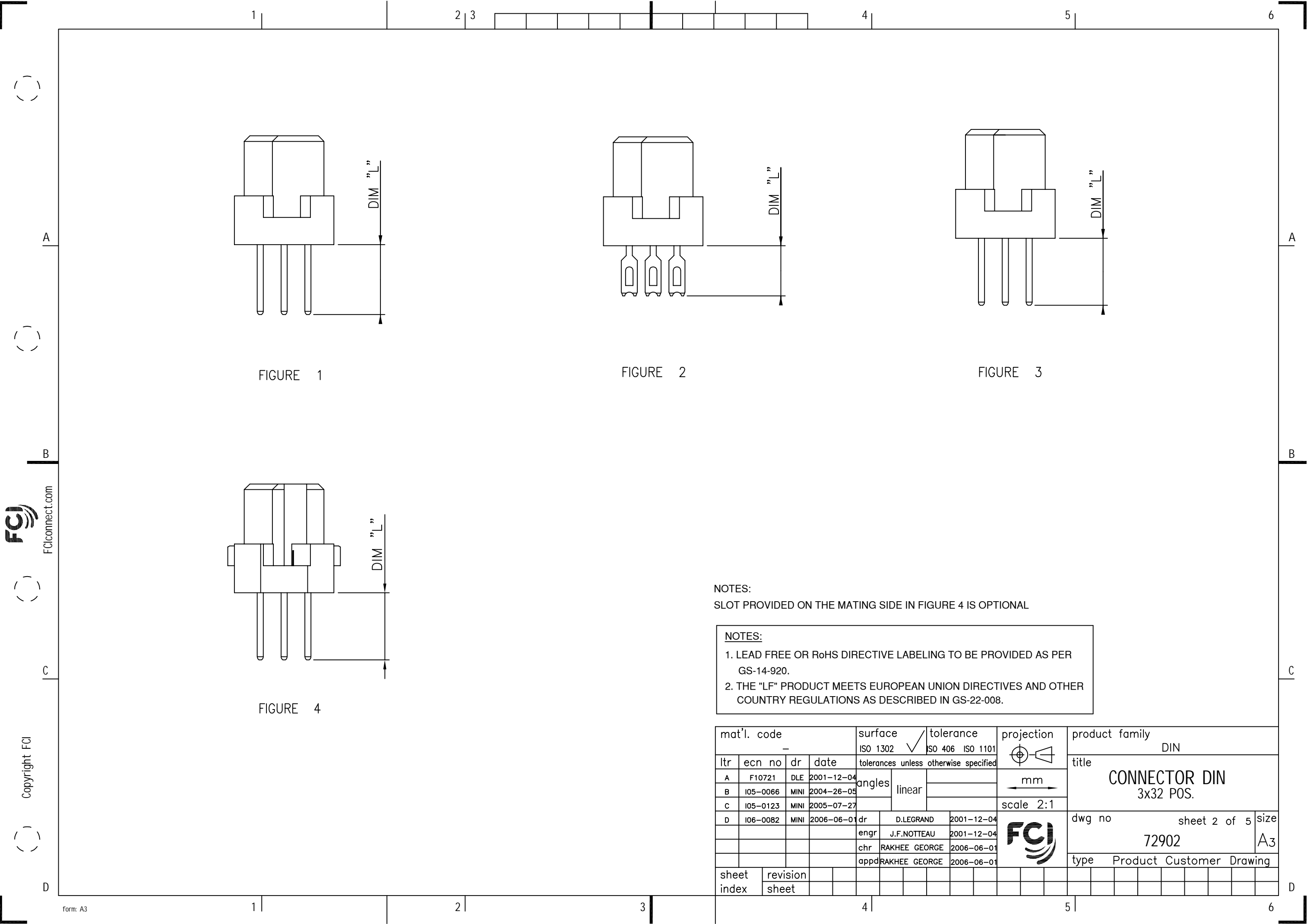


FIGURE 1

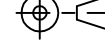
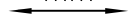

FIGURE 2

FIGURE 3

FIGURE 4

NOTES:
SLOT PROVIDED ON THE MATING SIDE IN FIGURE 4 IS OPTIONAL

NOTES:									
1. LEAD FREE OR RoHS DIRECTIVE LABELING TO BE PROVIDED AS PER GS-14-920.									
2. THE "LF" PRODUCT MEETS EUROPEAN UNION DIRECTIVES AND OTHER COUNTRY REGULATIONS AS DESCRIBED IN GS-22-008.									

mat'l. code				surface		tolerance		projection		product family											
-				ISO 1302		ISO 406 ISO 1101				DIN											
ltr	ecn no	dr	date	tolerances unless otherwise specified								title CONNECTOR DIN 3x32 POS.									
A	F10721	DLE	2001-12-04	angles		linear															
B	I05-0066	MINI	2004-26-05																		
C	I05-0123	MINI	2005-07-27																		
D	I06-0082	MINI	2006-06-01	dr	D.LEGRAND		2001-12-04				dwg no				sheet 2 of 5				size		
				engr	J.F.NOTTEAU		2001-12-04				72902				A3						
				chr	RAKHEE GEORGE		2006-06-01														
				appd	RAKHEE GEORGE		2006-06-01														
sheet index		revision sheet																			

C

D

D

1

2

3

4

5

6

PRODUCT NUMBER	CUSTOMER P/N	PIN LOADED IN POSITION																																DIM "L" ±0.5 If no spec	REMARKS	PLATING
		A	B	C	1	2	3	4	5	6	7	8	9	10	11	12	13	14	15	16	17	18	19	20	21	22	23	24	25	26	27	28	29			
72902-282	RNV 301 701	A	X	X	X	X	X	X	X	X	X	X	X	X	X	X	X	X	X	X	X	X	X	X	X	X	X	X	X	X	X	X	X	X	X	X
72902-282LF		B																																		
		C	X	X	X	X	X	X	X	X	X	X	X	X	X	X	X	X	X	X	X	X	X	X	X	X	X	X	X	X	X	X	X	X	X	X
72902-284	RNV 301 702	A	X	X	X	X	X	X	X	X	X	X	X	X	X	X	X	X	X	X	X	X	X	X	X	X	X	X	X	X	X	X	X	X	X	
72902-284LF		B	X	X	X	X	X	X	X	X	X	X	X	X	X	X	X	X	X	X	X	X	X	X	X	X	X	X	X	X	X	X	X	X	X	
		C	X	X	X	X	X	X	X	X	X	X	X	X	X	X	X	X	X	X	X	X	X	X	X	X	X	X	X	X	X	X	X	X	X	X
72902-296	102 2056	A				X																													X	
72902-296LF		B																																		
		C				X																													X	

FIG 1

FIG 2

CONTACT AREA: 2µm Au .

TERMINATION: LEADED PRODUCTS- SnPb 6-10µm, LEAD

FREE PRODUCTS- Sn (MATTE TIN), Ni ALL OVER.

CONTACT AREA: 2µm Au .

TERMINATION: LEADED PRODUCTS- SnPb 6-10µm, LEAD

FREE PRODUCTS- Sn (MATTE TIN), Ni ALL OVER.

CONTACT AREA: 2µm Au .

TERMINATION: LEADED PRODUCTS- SnPb 6-10µm, LEAD

FREE PRODUCTS- Sn (MATTE TIN), Ni ALL OVER.

FCI

FCIconnect.com

Copyright FCI

form: A3

mat'l. code

-

surface

ISO 1302

tolerance

ISO 406 ISO 1101

projection

product family

DIN

litr

ecr no

dr

date

tolerances unless otherwise specified

angles

linear

mm

scale 2:1

dwg no

sheet 5 of 5

size

A3

type

Product Customer Drawing

sheet index

revision sheet

dr

D.LEGRAND

2001-12-04

enr

J.F.NOTTEAU

2001-12-04

chr

RAKHEE GEORGE

2006-06-01

appd

RAKHEE GEORGE

2006-06-01

NOTES:

1. LEAD FREE OR RoHS DIRECTIVE LABELING TO BE PROVIDED AS PER GS-14-920.

2. THE "LF" PRODUCT MEETS EUROPEAN UNION DIRECTIVES AND OTHER COUNTRY REGULATIONS AS DESCRIBED IN GS-22-008.

PDM: Rev:E

STATUSReleased

Printed: Oct 30, 2007