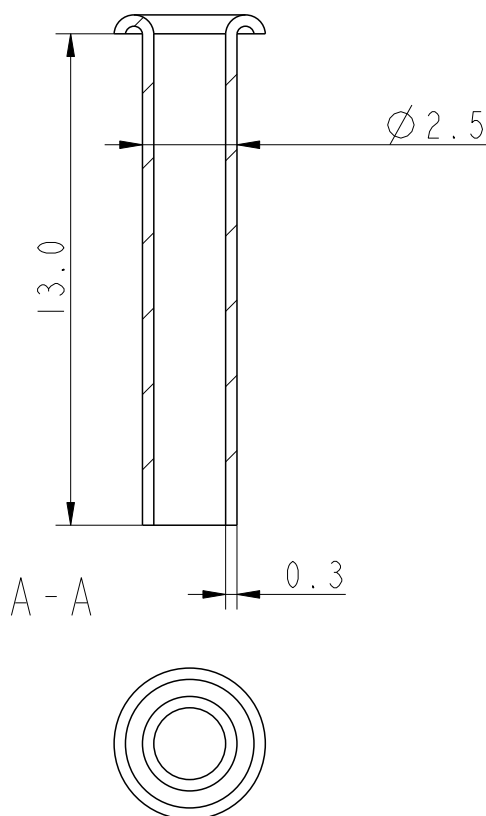


Product-Number	COMMENT
72812-002LF	RoHS COMPATIBLE VERSION



NOTE: RoHS INFORMATIONS

- The "LF" product meets European union Directives and other country regulations as described in GS-22-008.
- The product is not intended to be exposed to a manufacturing solder process.
- Packaging spec: see GS-14-920.

Surface coating over all:
Chemical tinning Sn 0.5 µm.

rev	ecn no	dr	date
A	SW0100	TAn	000928
B	LS05-0086	JTA	30/09/05
C	LS08-209	JTA	2008/10/28
-	-	-	-
-	-	-	-
-	-	-	-
-	-	-	-

www.fciconnect.com			surface ISO 1302	✓	tolerance std ISO 406 ISO 1101	projection A4	mm
			TOLERANCES UNLESS OTHERWISE SPECIFIED				↔
Dr	T. Andersson	000928	ANGULAR	LINEAR	0.X	±0.3	size A4
Eng	J. Jacobson	000928			0.XX	±0.1	
Chr	H. Carneling	000928	0°	±2°	0.XXX	±0.05	ECN LS08-0209
Appr	J. Jacobson	000928	Product family				Spec ref
FCi		title TUBULAR RIVET			dwg no 72812C		Rev. C
		catalog no			CUSTOMER		sheet 1 of 1

REV F - 2006-04-17

PDM: Rev:C

STATUS Released

Printed: Oct 30, 2008



Copyright FCI.