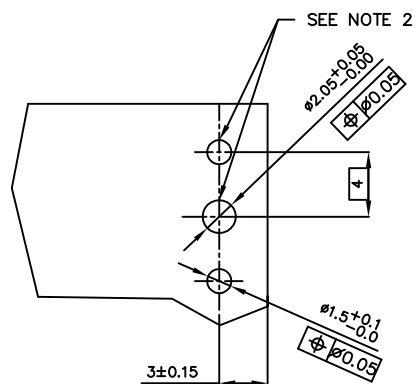
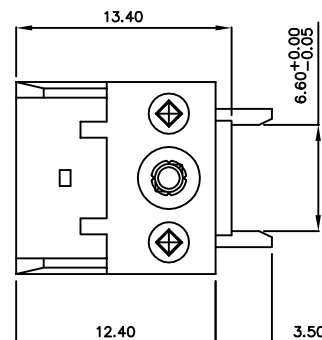
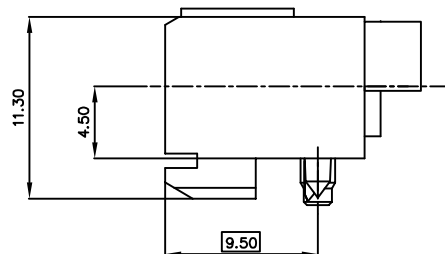
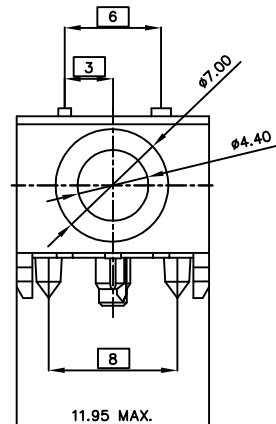


PRODUCT NUMBER
72718-001ALF





RECOMMENDED HOLE PATTERN,
COMPONENT SIDE. NOTE 1



NOTES:

1. PCB LAYOUT IS SHOWN FOR HOUSING REQUIREMENTS ONLY.
2. INDICATED HOLES ARE TO BE UNPLATED
3. THIS PRODUCT WITH "LF" SUFFIX MEETS EUROPEAN UNION DIRECTIVES AND OTHER COUNTRY REGULATIONS AS DESCRIBED IN GS -22-008.
4. THE HOUSING WILL WITHSTAND EXPOSURE TO 260 DEGREE PEAK TEMPERATURE FOR 20 SECONDS IN WAVE SOLDER APPLICATION WITH A 1.6 MM MINIMUM THICK CIRCUIT BOARD.

mat'l. code				tolerances unless otherwise specified		CUSTOMER COPY	 www.fciconnect.com		
ltr	ecn no	dr	date				title	product family	code
A	V21618	CGD	10/10/02	linear	.X $\pm .3$	projection	METRAL R/A COAX RECEPTACLE HOUSING	METRAL	213
B	B20167	GNV	021015		.XX $\pm .13$				
C	D605-0372	CLu	051007	angles	.XXX $\pm .051$				
				dr	C. DAILY 10/10/02	MM			
				enr	M. GRAY 10/10/02				
				chr	M. GRAY 10/10/02	scale			
				appd	M. GRAY 10/10/02	1:1			
sheet index	revision sheet	C	1						