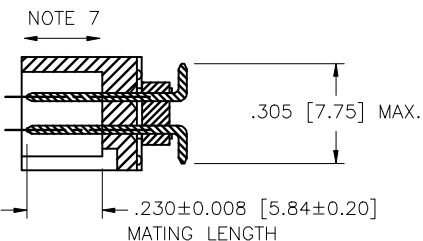
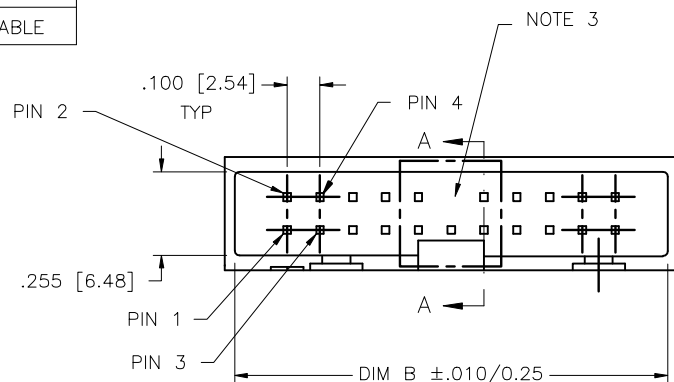
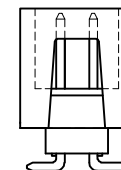
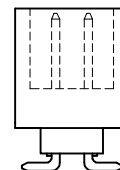
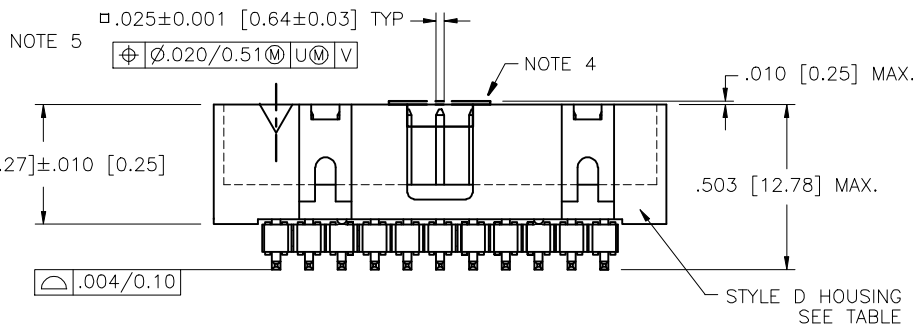


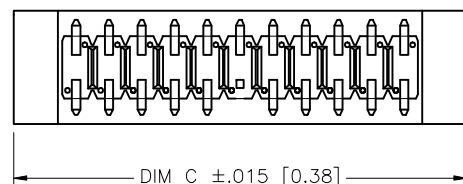
PRODUCT NO
SEE TABLE



SECTION A-A



w/WINDOW OPTION
SEE TABLE



DRAWN WITHOUT WINDOW OPTION

mat'l. code SEE NOTES 1 & 2	surface ISO 1302	tolerance ISO 406 ISO 1101	projection ISO 1001	product family BERGSTIK
ltr	ecn no	dr	date	title
Y	V03-0476	DAI	6/17/03	BERGSTIK® II HDR. D/R
AA	M05-0086	ERE	9/28/05	SLIMLINE SMT ASSEMBLY
AB	M06-0269	MNR	7/17/06	scale 1:1
AC	M06-0356	MNR	9/08/06	dr E. KROPWIENICK 8/21/96
AD	M08-0108	MHT	4/17/08	engr L. FYE 8/21/96
AE	M08-0230	MHT	8/14/08	chr T. BREWBAKER 8/21/96
AF	M08-0291	MHT	10/08/08	appd T. BREWBAKER 8/21/96
sheet	revision	AF	AF	AF
index	sheet	1	2	3

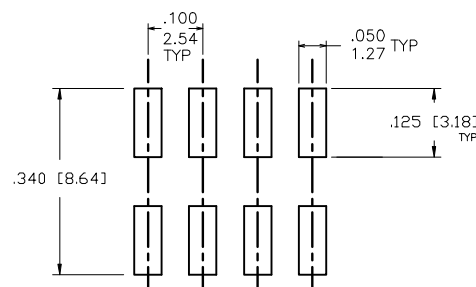
PRODUCT NO SEE TABLE	PLATING CODE	CONTACT AREA PLATING	SOLDER TAIL PLATING
	AA	30u"/.76u AU OVER 50u"/1.27u Ni	100u"/2.54u TIN OVER 50u"/1.27u Ni
	4	100u"/3.05u Sn OVER 50u"/1.27u Ni	100u"/3.05u Sn OVER 50u"/1.27u Ni

LEAD FREE PLATING	AA	30u"/.76u AU OVER 50u"/1.27u Ni	100u"/2.54u TIN OVER 50u"/1.27u Ni
	4	100u"/3.05u Sn OVER 50u"/1.27u Ni	100u"/3.05u Sn OVER 50u"/1.27u Ni

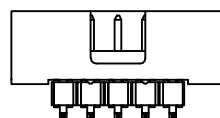
NOTE 11

NOTES:

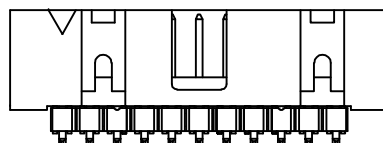
1. BODY MATERIAL: PCT, GLASS FIBER REINFORCED, FLAME RETARDANT PER UL-94V-0.
COLOR: BLACK OR
COLOR: MINERAL FILLED LCP, FLAME RETARDANT PER UL-94V-0 BLACK
2. PIN MATERIAL: PHOS-BRONZE.
3. PINS DELETED FROM SPECIFIED LOCATIONS FOR POLARIZATION. SEE TABLE FOR LOCATIONS.
4. PACKAGING OPTIONS: CHECK SPECIFIC PART NUMBERS FOR AVAILABILITY.
PART NUMBERS WITHOUT A SUFFIX ARE PACKAGED IN TRAYS.
PART NUMBERS FOLLOWED BY A "V" SUFFIX ARE PACKAGED TAPE-ON-REEL WITH A PICK-UP CAP INSTALLED. VACUUM CAP TO BE CENTRALLY LOCATED REGARDLESS OF NUMBER OF POSITIONS.
PART NUMBERS FOLLOWED BY A "B" SUFFIX ARE ASSEMBLED WITH VACUUM PICK-UP CAPS INSTALLED AND PACKAGED IN TRAYS
5. MEASURED WITH PART IN RESTRAINED CONDITION.
6. TWO SIDES OF PIN TIPS NOT PLATED. TYPICAL BOTH ENDS (SIMPLEX PLATING ONLY).
7. 2 LBS/0.9KG MIN PIN RETENTION IN EITHER DIRECTION.
8. ADD "LF" SUFFIX AT THE END OF PART NUMBER FOR LEAD FREE OPTION.
9. THIS PRODUCT MEETS EUROPEAN UNION DIRECTIVES AND OTHER COUNTRY REGULATION AS DESCRIBED IN GS-22-008.
10. THE HOUSING WILL WITHSTAND EXPOSURE TO 260°C PEAK TEMPERATURE FOR 10-20 SECONDS IN A CONVECTION, INFRA-RED OR VAPOR PHASE REFLOW OVEN. SEE APPLICATION NOTES/PROCEDURES IF THEY ARE AVAILABLE.
11. "THIS PRODUCT HAS 100% TIN PLATING IN THE INTERFACE AND HAS NOT BEEN TESTED FOR WHISKER GROWTH IN ALL INTERCONNECT ENVIRONMENTS."



RECOMMENDED PAD LAYOUT
SCALE 4/1

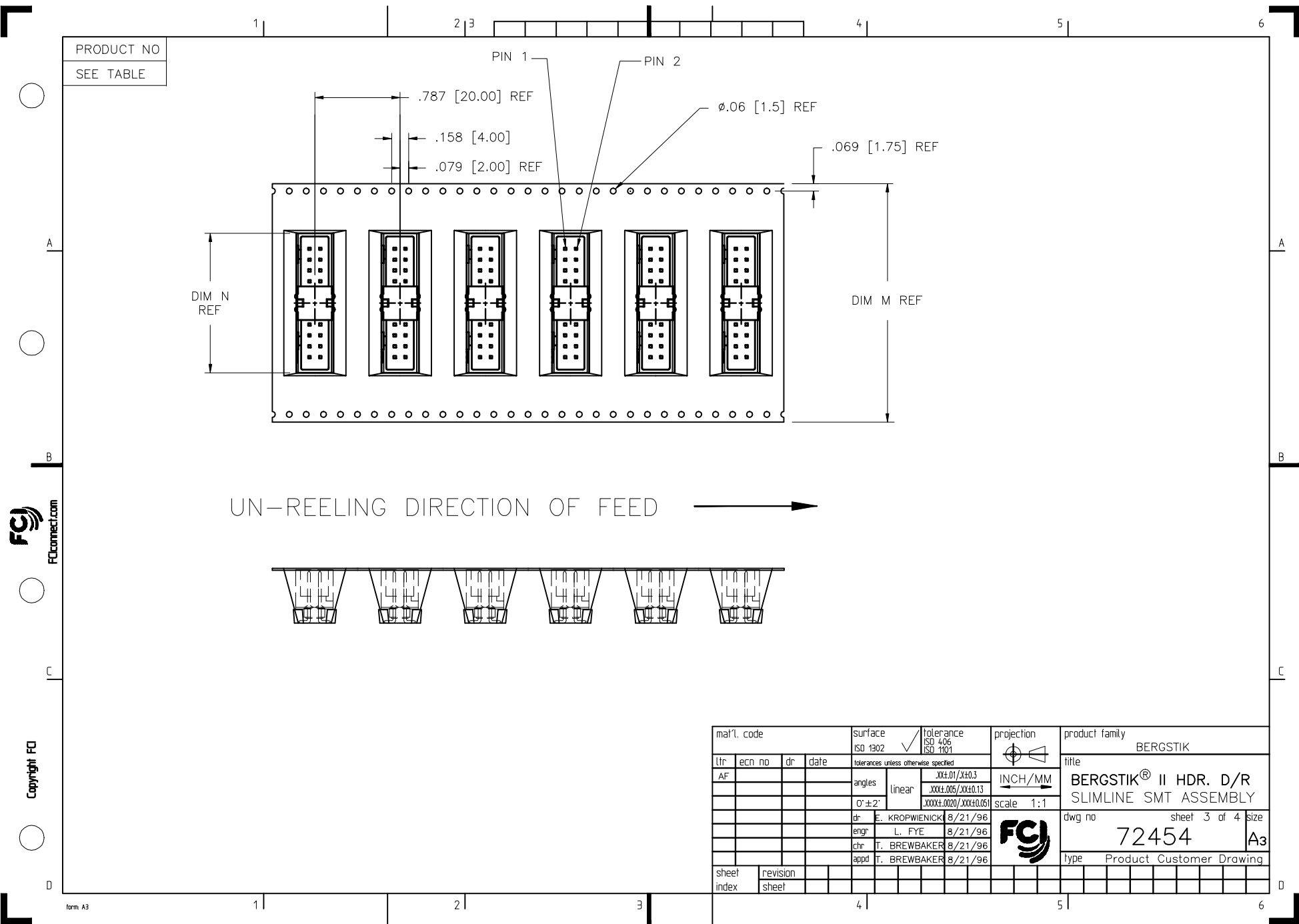


5 POSITION
2 X 5, STYLE A



2 x 8 AND LARGER, STYLE D

mat'l. code		surface ISO 1902	tolerance ISO 406 ISO 1101	projection INCH/MM	product family BERGSTIK
ltr	ec'n no	dr	date	tolerances unless otherwise specified	title
AF				linear .XX1.01/XX1.03 XXX1.006/XXX1.013 O'±2' .XXX1.0020/XXX1.0051	BERGSTIK® II HDR. D/R SLIMLINE SMT ASSEMBLY
				scale 1:1	dwg no
					sheet 2 of 4 size
					A3
					type
					Product Customer Drawing
sheet	revision				
index	sheet				



FCI
FCconnect.com

Copyright FCI

mat'l. code				surface ISO 1302	tolerance ISO 406 ISO 1101	projection	product family BERGSTIK
ltr	ecp no	dr	date	tolerances unless otherwise specified		 INCH/MM	title
AF				angles	linear		BERGSTIK® II HDR. D/R
						scale 1:1	SLIMLINE SMT ASSEMBLY
				dr	E. KROPWIENICK	8/21/96	dwg no
				engr	L. FYE	8/21/96	sheet 3 of 4
				chr	T. BREWBAKER	8/21/96	size
				appd	T. BREWBAKER	8/21/96	A3
sheet	revision					type Product Customer Drawing	
index	sheet						

