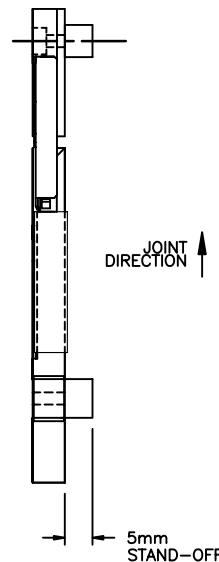
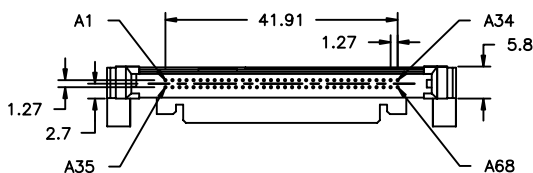
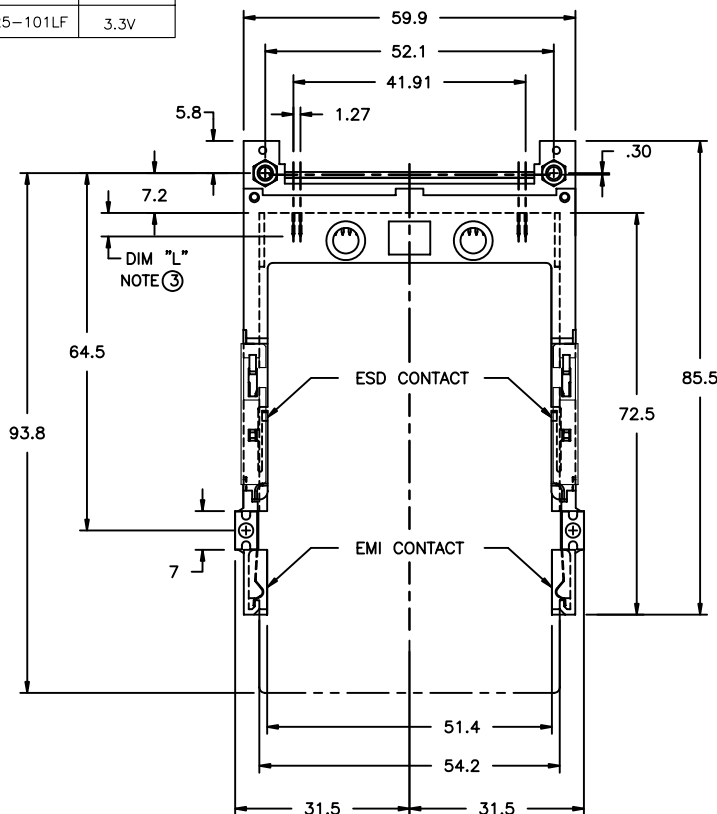


PRODUCT NO.	NOTE
72325-001	5.0V
72325-001LF	5.0V
72325-101	3.3V
72325-101LF	3.3V




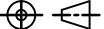
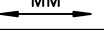
NOTES:

- 1 **HEADER ASSY**
PLASTIC: HOUSING - LCP UL94V-0 BLACK - ABOVE PCB
PIN: PHOSPHOR BRONZE
GUIDE MECHANISM ASSY
PLASTIC: GUIDE - POLYPHTHARAMID UL94V-0 BLACK
COVER PLATE: STAINLESS STEEL
EMI CONTACT: PHOSPHOR BRONZE

- 2 **FINISH - PIN**
UNDER PLATING: 0.5um Ni
CONTACT AREA: 0.1um GOLD OVER
0.5um Pd-Ni
SOLDER TAIL(TIN LEAD OPTION): 2.5um Sn-Pb
SOLDER TAIL(LEAD FREE OPTION): 2.5um PURE TIN

③ DIM "L"	4.25±.1	3.5±.1	5.0±.1
OTHERS	36,67	1,17,34,35,51,68	

- 4 **RECOMMENDED HOLD DOWN - 2mm SCREWS**
95121 AND 2mm NUTS 92869.
SEE FOR CHARTED INFORMATION.
RECOMMENDED SCREW TORQUE: 1.0 TO 1.5 MAX in-lbs. (1.2-1.7 cm-kgs).
- 5 SEE TA-1052 FOR PCB LAYOUT.
- 6 **MATING CONNECTOR: 91931-31169.** MUST BE PURCHASED SEPARATELY.
- 7 IF LEAD FREE P.N.THE HOUSING WILL WITHSTAND EXPOSURE TO 260°C PEAK TEMPERATURE FOR 10 SECONDS IN A WAVE SOLDER APPLICATION WITH A 1.00MM MINIMUM THICK CIRCUIT BOARD.
- 8 IF LEAD FREE P/N.THE PRODUCT MEETS EUROPEAN UNION DIRECTIVES AND OTHER COUNTRY REGULATIONS AS DESCRIBED IN GS-22-008
- 9 LEAD FREE P/N PACKAGING MEETS GS-14-920 SPECIFICATION

mat'l. code				tolerances unless otherwise specified				CUSTOMER COPY		 Electronics FCI www.fciconnect.com	
ltr	ecn no	dr	date	linear	.X±.3			projection 	title EJECTOR HEADER ASSEMBLY 68 POS. SMT TYPE 123		
A	V61093	RHG	8/16/96								
B	V61704	RHG	6/18/97	angles	.XXX±.051				product family MCS size dwg no A4 72325		
C	V80260	RHG	2/17/98		0° ±2'						
D	V92135	CGC	11/16/99	dr	R.GRAPE	8/16/96	MM ←→	sheet 1 of 5			
E	V12231	TFG	9/19/01	engr	D.BRANN	8/16/96					
F	V05-0302	W B	04/21/05	chr	D.BRANN	8/16/96	scale 1:1	sheet 1 of 5			
G	N05-0116	W B	04/27/05	appd	D.BRANN	8/16/96					
sheet index	revision	G	G	G	G	G					
	sheet	1	2	3	4	5					

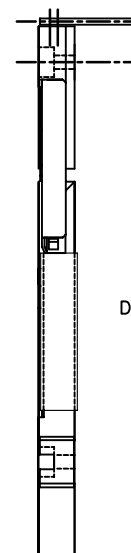
cage code

Tous droits strictement reserves. Reproduction ou communication a des tiers interdite sous quelque forme que ce soit sans autorisation ecrite du proprietaire. Propriete de c FCI. Droits de reproduction FCI.

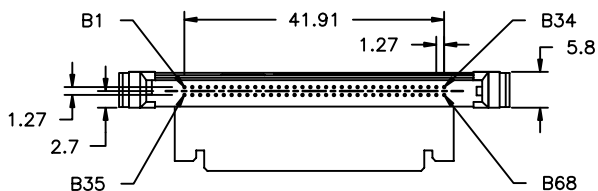





325-002LF	5.0V
325-102	3.3V
325-102LF	3.3V

The drawing shows the mechanical specifications for the 325 series connector. The top view includes dimensions for the overall width (59.9), the width of the contact array (52.1), and the width of the individual contacts (41.91). The pitch between contacts is 1.27. The side view shows the overall height (93.8), the height of the contact array (64.5), and the height of the ESD and EMI contacts (72.5). The drawing also indicates the location of the ESD and EMI contacts and the DIM "L" dimension, which is noted as 7.2.



JOINT
DIRECTION



mat'l. code					tolerances unless otherwise specified					CUSTOMER COPY		 Electronics www.fclconnect.com												
litr		ecn no		dr	date	linear		.X±.3			projection 		title EJECTOR HEADER ASSEMBLY 68 POS. SMT TYPE 123											
G								.XX±.13																
								.XXX±.051																
						angles		0° ±2°							product family MCS size dwg no									
						dr	R.GRAPE	8/16/96		MM ←→		sheet index revision sheet												
						engr	D.BRANN	8/16/96																
						chr	D.BRANN	8/16/96		scale 1:1		A4 72325 sheet 2 of												
						appd	D.BRANN	8/16/96																

	cage	code
--	------	------

STATUS: **Released** 22526 Printed: Feb 06, 2008

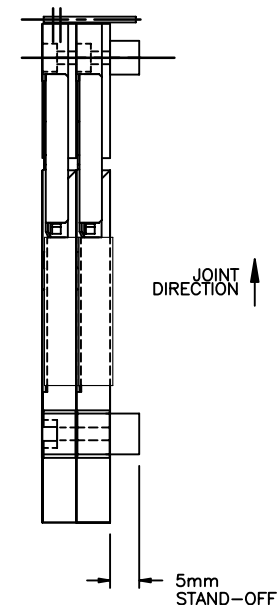
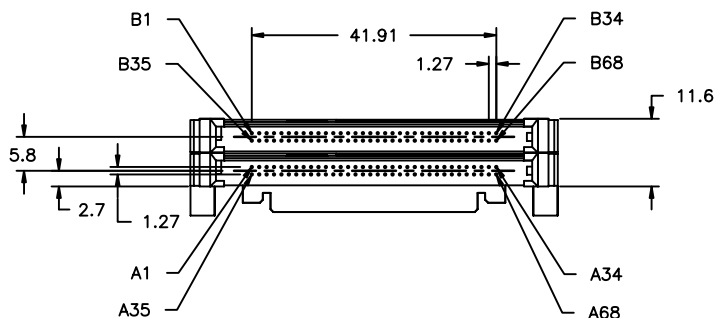
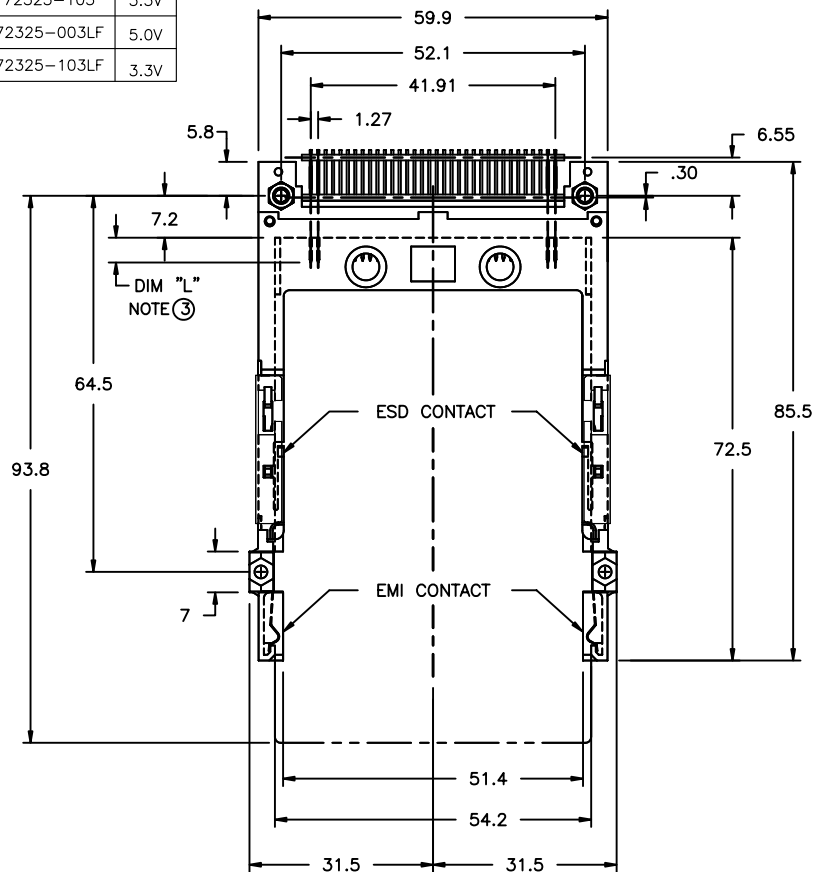
ACAD

PDM: Rev:G³


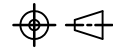
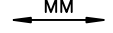
Tous droits strictement reserves. Reproduction ou communication a des tiers interdite sous quelque forme que ce soit sans autorisation écrite du propriétaire. Propriete de c FCI. Droits de reproduction FCI.

All rights strictly reserved. Reproduction or issue to third parties in any form whatever is not permitted without written authority from the proprietor. Property of FCI. Copyright FCI.

PRODUCT NO.	NOTE
72325-003	5.0V
72325-103	3.3V
72325-003LF	5.0V
72325-103LF	3.3V



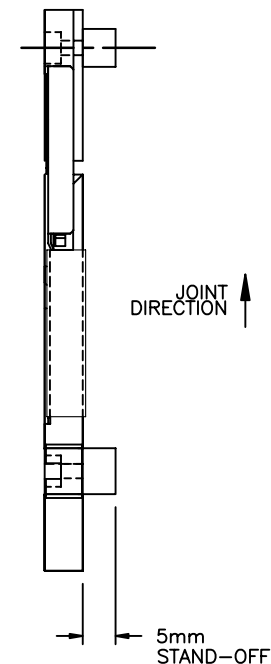
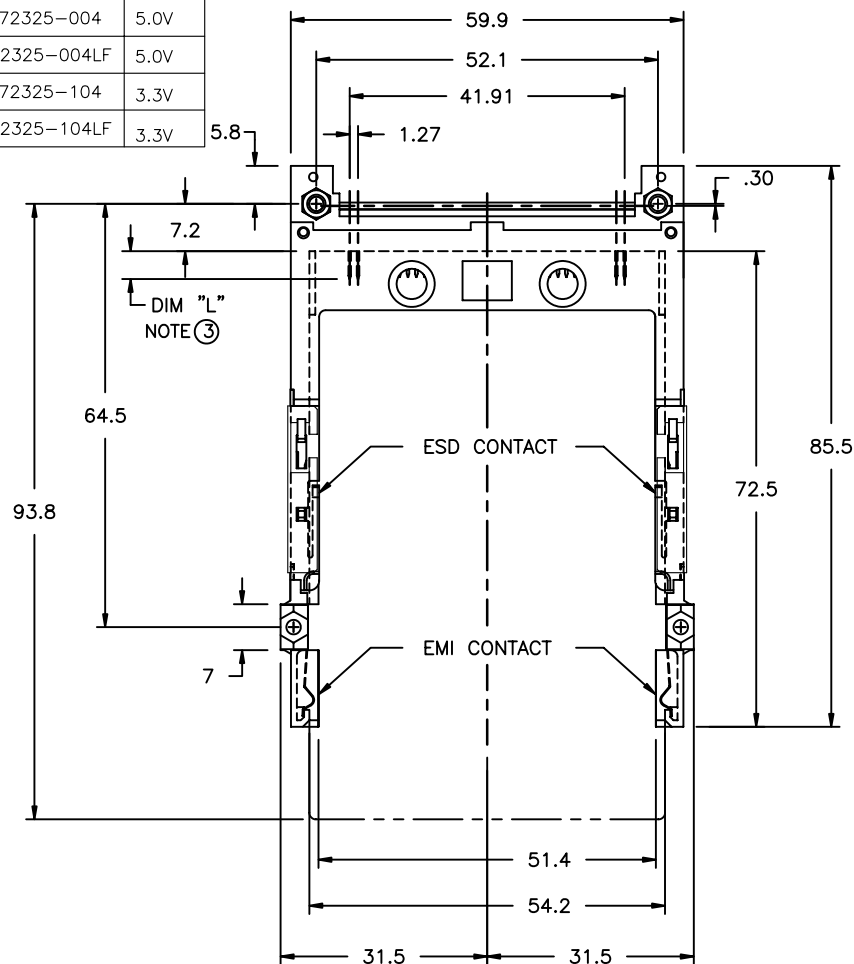
NOTE:
TA-1052, PAGE 1, FOR PCB LAYOUT.

mat'l. code				tolerances unless otherwise specified		CUSTOMER COPY	 www.fciconnect.com		
ltr	ecn no	dr	date	linear	.X±.3				
G					.XX±.13	projection			
					.XXX±.051				
				angles	0° ±2'	 scale 1:1	title		
				dr	R.GRAPE 8/16/96		EJECTOR HEADER ASSEMBLY		
				enr	D.BRANN 8/16/96		68 POS. SMT TYPE 123		
				chr	D.BRANN 8/16/96		product family MCS		
				appd	D.BRANN 8/16/96	A4	size dwg no		
sheet index		revision sheet					72325		
							code		
							sheet 3 of		

Tous droits strictement reserves. Reproduction ou communication a des tiers
interdite sous quelque forme que ce soit sans autorisation ecrite du proprietaire.
Propriete de c FCI. Droits de reproduction FCI.

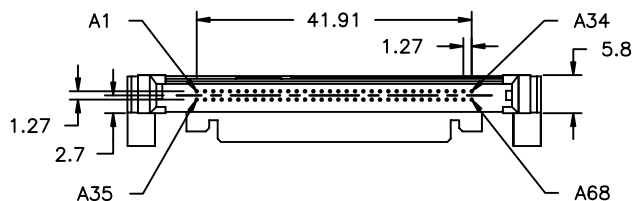
All rights strictly reserved. Reproduction or issue to third parties in any
form whatever is not permitted without written authority from the proprietor.
Property of FCI. Copyright FCI.

PRODUCT NO.	NOTE
72325-004	5.0V
72325-004LF	5.0V
72325-104	3.3V
72325-104LF	3.3V



NOTE:

TA-1052, PAGE 3, FOR PCB LAYOUT.



mat'l. code				tolerances unless otherwise specified		CUSTOMER COPY		Electronics FCI	
ltr	ecn no	dr	date	linear	.XX±.3	projection		title	www.fciconnect.com
G					.XX±.13				
					.XXX±.051				
				angles	0° ±2°			EJECTOR HEADER ASSEMBLY	
				dr	R.GRAPE 2/17/98			68 POS. SMT TYPE 123	
				enr	D.BRANN 2/17/98			product family MCS	code
				chr	D.BRANN 2/17/98			size dwg no	—
				appd	D.BRANN 2/17/98			A4 72325	sheet 4 of
sheet index	revision sheet								

ACAD

PDM: Rev:G

STATUS: Released 26 Printed: Feb 06, 2008

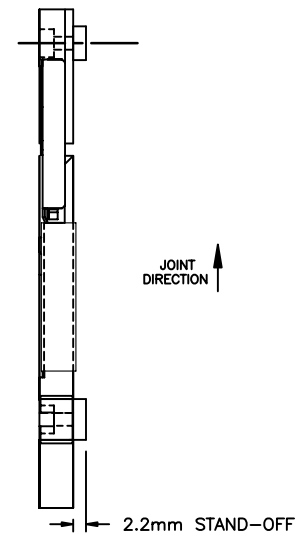
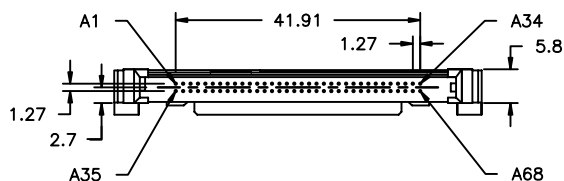
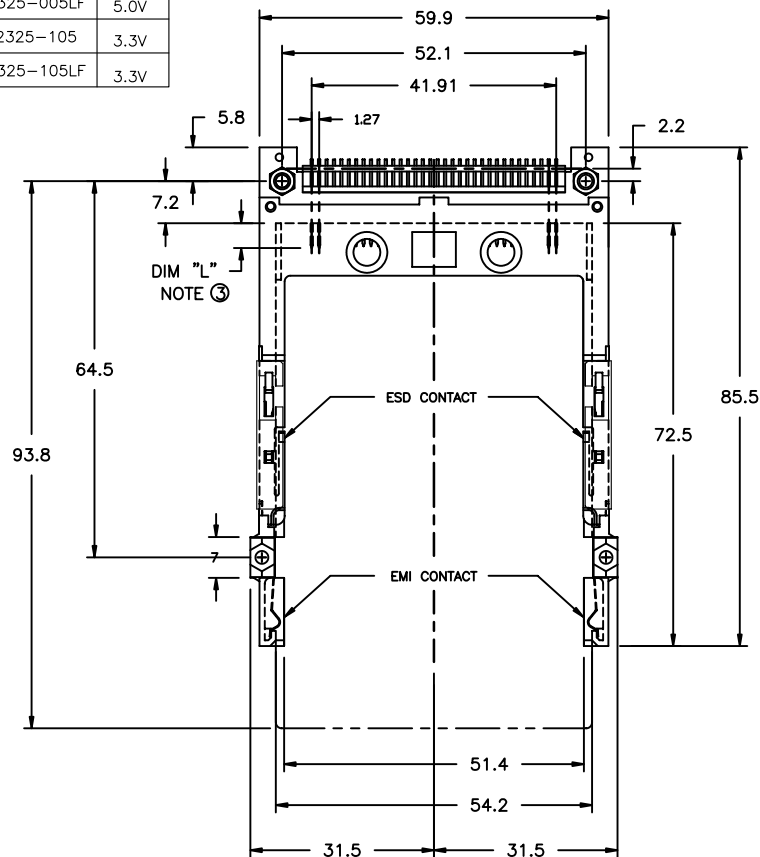
Tous droits strictement reserves. Reproduction ou communication a des tiers interdite sous quelque forme que ce soit sans autorisation écrite du propriétaire. Propriete de c FCI. Droits de reproduction FCI.

All rights strictly reserved. Reproduction or issue to third parties in any form whatever is not permitted without written authority from the proprietor. Property of FCI. Copyright FCI.

FCI


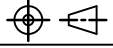
B

PRODUCT NO.	NOTE
72325-005	5.0V
72325-005LF	5.0V
72325-105	3.3V
72325-105LF	3.3V



NOTE:

TA-1052, PAGE 3, FOR PCB LAYOUT.

mat'l. code				tolerances unless otherwise specified		CUSTOMER COPY	 Electronics FCI www.fciconnect.com		
ltr	ecn no	dr	date	linear	.X±.3				
G					.XX±.13				
					.XXX±.051				
				angles	0° ±2°		title EJECTOR HEADER ASSEMBLY 68 POS. SMT TYPE 123	product family MCS	code —
				dr	G.CLEMENS 11/16/99				
				enr	D.BRANN 11/16/99				
				chr	D.BRANN 11/16/99				
				appd	D.BRANN 11/16/99	scale 1:1	A4	size 72325	sheet 5 of
sheet index	revision sheet								

cage code

ACAD

PDM: Rev:G

STATUS: Released 26 Printed: Feb 06, 2008