

71991-YXXXLF

- OPTIONAL LETTER

- NUMBER OF POSITIONS PER ROW: 02 TO 50.

- PLATING CODE

3= 0.76 μ m GOLD ON CONTACT AREA.

3.81 μm TIN-LEAD ON TAIL.

4= 5 μ m TIN-LEAD ON CONTACT AREA.

3.81 μm TIN-LEAD ON TAIL.

$\delta = 0.38 \mu\text{m}$ GOLD ON CONTACT AREA.

3.81 μm TIN-LEAD ON TAIL.

WHEN SUFFIX "LF" IS REQUIRED, 2 μ m MIN MATTE TIN OVER 1.27 MIN Ni IS SUPPLIED INSTEAD OF SnPb.

1 - HOUSING MAT'L: THERMOPLASTIC GLASS FILLED

FLAME RETARDANT PER UL 94 V-0

LOW TEMPERATURE: COLOR BLUE

HIGH TEMPERATURE: COLOR GREY.

2 - TERMINAL MATERIAL: PHOSPHOR BRONZE.

3 - 2 UP TO 50 POSITIONS PRODUCT PACKED IN TUBE.

4 - TO DETERMINE DIMENSIONS:

N = NUMBER OF POSITIONS PER ROW

EXAMPLE: 8 POS: $(N \times 2.54) - 0.08 = 20.24$ mm

5 - RECOMMENDED IR PROFIL PER TA 842.

6 – RoHS COMPATIBLE PRODUCT SPECIFICATIONS

d - PLATING:

- "LF" MEANS THE PRODUCT IS LEAD-FREE,
2μm MINIMUM MATTE TIN OVER 1.27μm
MINIMUM NICKEL UNDERPLATE.

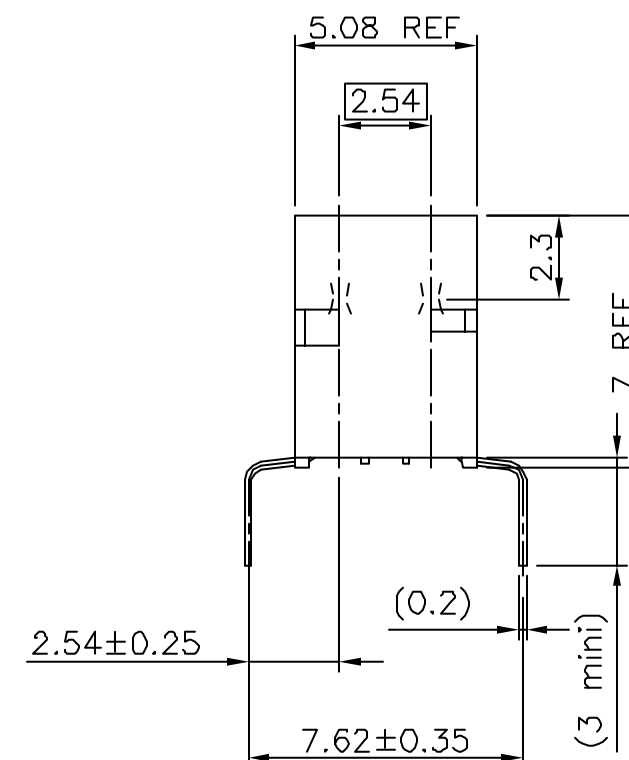
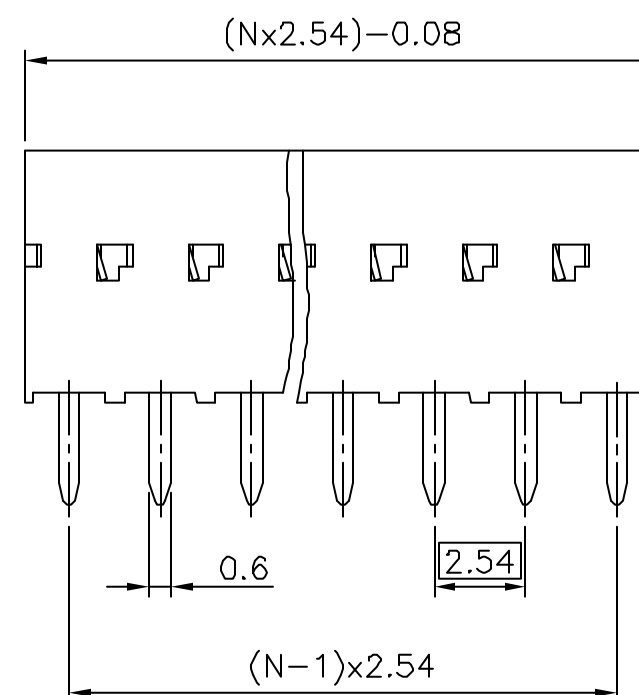
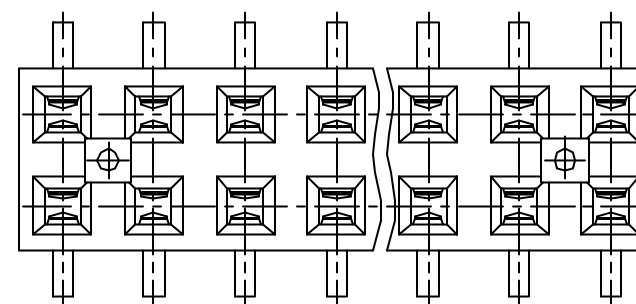
b – MANUFACTURING PROCESS COMPATIBILITY

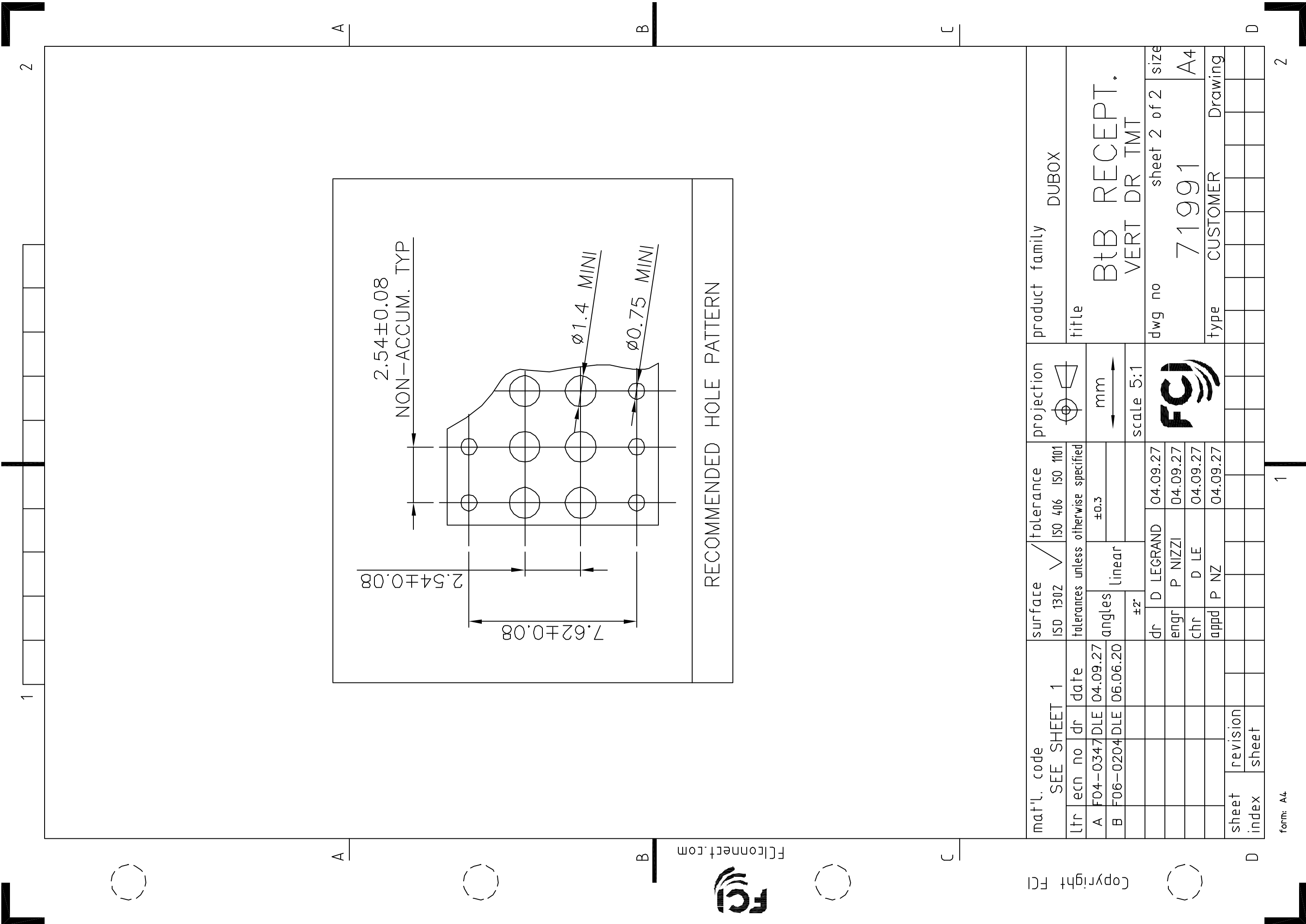
- THE HOUSING WILL WITHSTAND EXPOSURE TO 260°C ±5°C SOLDER BATH TEMPERATURE FOR 5 SECONDS IN A WAVE SOLDER APPLICATION WITH A 1.6mm MIN THICK CIRCUIT BOARD.

C - LABELING:

— MEETS PACKAGING SPECS AS PER GS-14-920

d - LEGAL STATEMENT: SEE GS-22-008

[illegible]



A B C D

A B C D

1

2

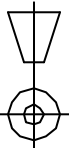
1

2

flconnect.com



Copyright FCI

mat'l. code SEE SHEET 1			surface ISO 1302 ✓		tolerance ISO 406 ISO 1101		projection 		product family DUBOX	
ltr	ecn no	dr	date			tolerances unless otherwise specified			title	
A	F04-0347	DLE	04.09.27			angles		linear		BtB RECEPT. VERT DR TMT
B	F06-0204	DLE	06.06.20			±2°		±0.3		
								mm		
								scale 5:1		
			dr		D LEGRAND	04.09.27		dwg no		
			engr		P NIZZI	04.09.27		sheet 2 of 2		
			chr		D LE	04.09.27		size		
			appd		P NZ	04.09.27		71991		
								type		
								CUSTOMER		
								Drawing		
sheet	revision									
index	sheet									

form: A4