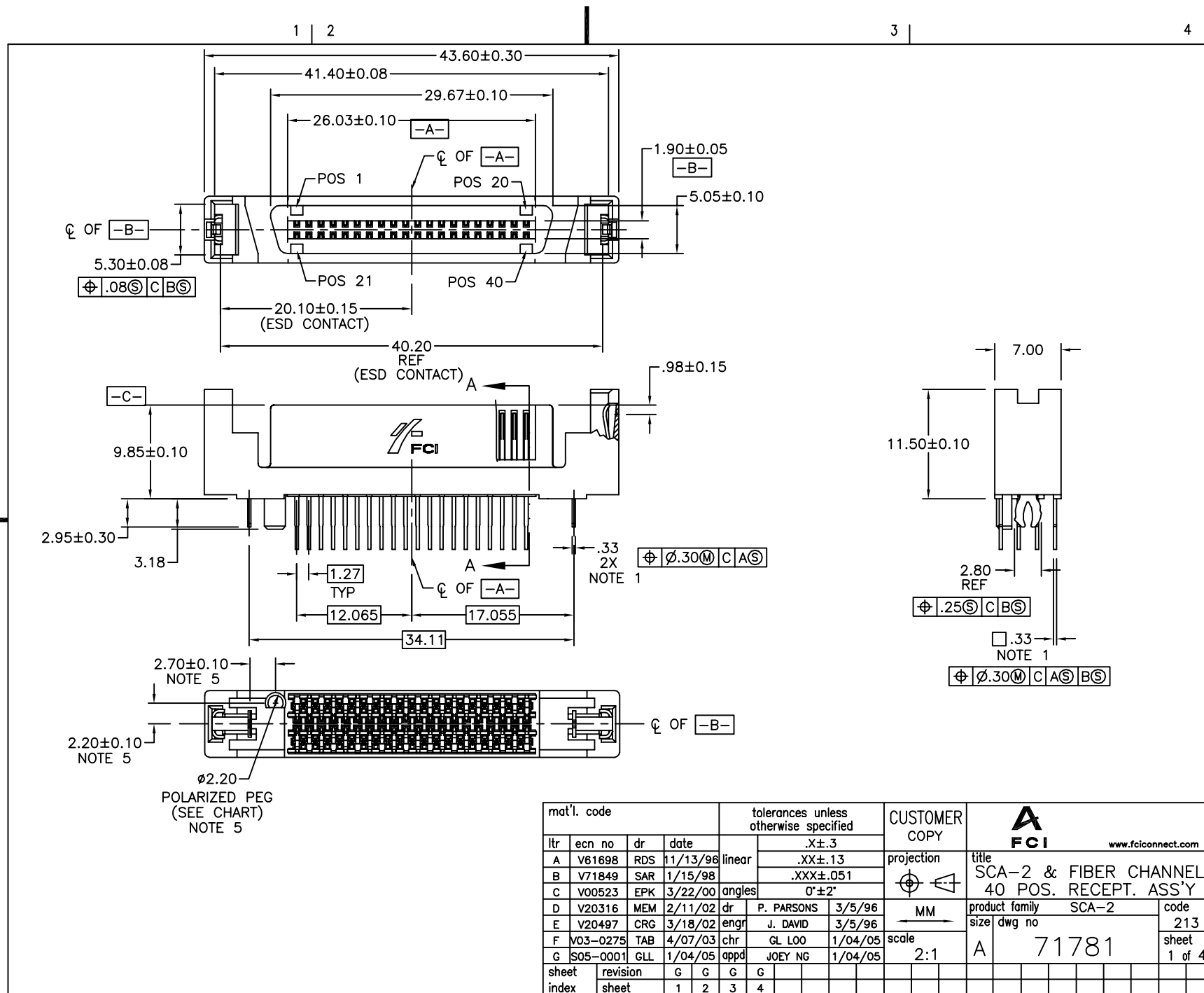


Tous droits strictement reserves. Reproduction ou communication a des tiers interdite sous quelque forme que ce soit sans autorisation écrite du propriétaire. Propriete de c FCI. Droits de reproduction FCI.

All rights strictly reserved. Reproduction or issue to third parties in any form whatever is not permitted without written authority from the proprietor. Property of FCI. Copyright FCI.



mat'l. code				tolerances unless otherwise specified				CUSTOMER COPY		FCI	
ltr	ecn no	dr	date					projection		title	www.fciconnect.com
A	V61698	RDS	11/13/98	linear	.X±.3			⊕		SCA-2 & FIBER CHANNEL	
B	V71849	SAR	1/15/98		.XX±.13					40 POS. RECEPT. ASS'Y	
C	V00523	EPK	3/22/00	angles	.XXX±.051						
D	V20316	MEM	2/11/02	dr	0°±2°						
E	V20497	CRG	3/18/02	enrg		P. PARSONS	3/5/96	MM		product family	SCA-2
F	V03-0275	TAB	4/07/03	chr		J. DAVID	3/5/96	scale		size	213
G	S05-0001	GLL	1/04/05	appd		JOEY NG	1/04/05	2:1		dwg no	71781
sheet	revision	G	G	G	G						sheet
index	sheet	1	2	3	4						1 of 4

cage code
22526

ACAD

PDM: Rev:G

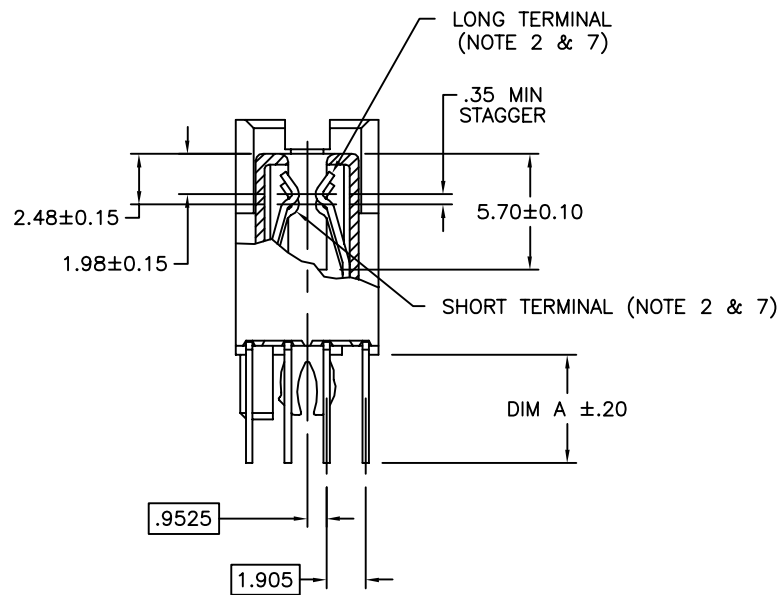
STATUS:Released

Printed: Mar 14, 2007


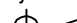

Tous droits strictement reserves. Reproduction ou communication a des tiers interdite sous quelque forme que ce soit sans autorisation écrite du propriétaire. Propriete de c FCI. Droits de reproduction FCI.



All rights strictly reserved. Reproduction or issue to third parties in any form whatever is not permitted without written authority from the proprietor. Property of FCI. Copyright FCI.



SECTION A-A

mat'l. code				tolerances unless otherwise specified			CUSTOMER COPY		<div> www.fciconnect.com</div>			
ltr	ecn no	dr	date	linear	.X±.3		projection 	title SCA-2 & FIBER CHANNEL 40 POS. RECEPT. ASS'Y				
G					.XX±.13							
					.XXX±.051							
				angles	0°±2°		 MM scale 3:1	product family SCA-2		code		
				dr	P. PARSONS	3/5/96		size	dwg no	213		
				enrg	J. DAVID	3/5/96				A	71781	sheet 2 of
				chr	GL L00	1/04/05						
				appd	JOEY NG	1/04/05						
sheet index	revision sheet											

cage code
22526

ACAD

PDM: Rev:G

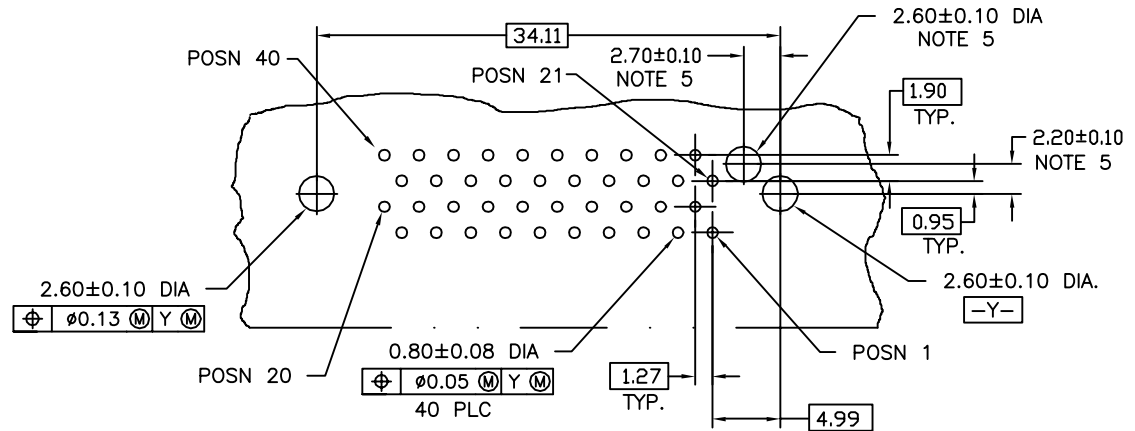
STATUS:Released

Printed: Mar 14, 2007


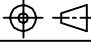
PRODUCT NO.	"A" DIM	POLARIZATION PEG	RECOMMENDED P.C. BOARD THICKNESS	PLATING	CONTACT POSITIONS
71781-001	2.79	YES	1.57mm (0.062")	SEE NOTE 4	SEE NOTE 2
-002	2.79	NO			
-003	3.18	YES	2.36mm (0.093")		
-004	3.18	NO			
-005	4.06	YES	3.18mm (0.125")		
-006	4.06	NO			
71781-007	3.18	YES	2.36mm (0.093")	SEE NOTE 4	SEE NOTE 7
71781-101	2.79	YES	1.57mm (0.062")	SEE NOTE 6	SEE NOTE 2
-102	2.79	NO			
-103	3.18	YES	2.36mm (0.093")		
-104	3.18	NO			
-105	4.06	YES	3.18mm (0.125")		
71781-106	4.06	NO			

NOTES :

- TRUE POSITION NOTES APPLY AT TERMINAL TIP.
- CONTACTS IN POSITIONS 1 THRU 20,24,25,27,28, 30, 31, 33, AND 34 ARE SHORT TERMINALS. CONTACTS IN POSITIONS 21, 22, 23, 26, 29, 32, AND 35 THRU 40 ARE LONG TERMINALS.
- RAW MATERIALS:
HOUSING: HTN, UL94V-0, COLOR: BLACK
CONTACTS: PHOSPHOR-BRONZE
- CONTACT PLATING: 30u" (0.76um) MIN. GXT PLATING OVER 50u" (1.27um) NICKLE MIN. UNDERPLATE IN CONTACT AREA. 100u" (2.54um) MIN. TIN-LEAD PLATING OVER 50u" (1.27um) MIN. NICKLE UNDERPLATE IN P.C. BOARD LEG AREA. 50u" (1.27um) MIN. NICKLE UNDERPLATE OVER REMAINING AREA.
- DIMENSIONS DO NOT APPLY TO CONNECTOR STYLES WITHOUT POLARIZATION PEG. (SEE CHART)
- CONTACT PLATING: 30u" (0.76um) MIN. GOLD PLATING OVER 50u" (1.27um) NICKLE MIN. UNDERPLATE IN CONTACT AREA. 100u" (2.54um) MIN. TIN-LEAD PLATING OVER 50u" (1.27um) MIN. NICKLE UNDERPLATE IN P.C. BOARD LEG AREA. 50u" (1.27um) MIN. NICKLE UNDERPLATE OVER REMAINING AREA.
- CONTACTS IN POSITIONS 1 THRU 21, 24, 25, 30-32, 35 & 40 ARE LONG TERMINALS. CONTACTS IN POSITIONS 22, 23, 26, 27, 28, 29, 33, 34, 36-39 ARE SHORT TERMINALS.



RECOMMENDED PC BOARD MOUNTING DIMENSIONS COMPONENT SIDE

mat'l. code				tolerances unless otherwise specified		CUSTOMER COPY	 www.fciconnect.com	
ltr	ecn no	dr	date	linear	.X±.3			
G					.XX±.13	projection	 MM	
				angles	.XXX±.051			
				dr	P. PARSONS 3/5/96		product family SCA-2 size dwg no 213	
				enrg	J. DAVID 3/5/96			
				chr	GL L00 1/04/05	scale	A 71781	
				appd	JOEY NG 1/04/05	2:1		
sheet index	revision sheet						cage code 22526	

Tous droits strictement reserves. Reproduction ou communication a des tiers interdite sous quelque forme que ce soit sans autorisation ecrite du proprietaire. Propriete de c FCI. Droits de reproduction FCI.



All rights strictly reserved. Reproduction or issue to third parties in any form whatever is not permitted without written authority from the proprietor. Property of FCI. Copyright FCI.

PRODUCT NO.	"A" DIM	POLARIZATION PEG	RECOMMENDED P.C. BOARD THICKNESS	PLATING	CONTACT POSITIONS
71781-001LF	2.79	YES	1.57mm (0.062")	SEE NOTE 9	SEE NOTE 2
-002LF	2.79	NO			
-003LF	3.18	YES	2.36mm (0.093")		
-004LF	3.18	NO			
-005LF	4.06	YES	3.18mm (0.125")		
-006LF	4.06	NO			
71781-007LF	3.18	YES	2.36mm (0.093")	SEE NOTE 9	SEE NOTE 7
71781-101LF	2.79	YES	1.57mm (0.062")	SEE NOTE 8	SEE NOTE 2
-102LF	2.79	NO			
-103LF	3.18	YES	2.36mm (0.093")		
-104LF	3.18	NO			
-105LF	4.06	YES	3.18mm (0.125")		
71781-106LF	4.06	NO			


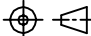

NOTES :

⑧ CONTACT PLATING: 30u" (0.76um) MIN. GOLD PLATING OVER 50u" (1.27um) NICKLE MIN. UNDERPLATE IN CONTACT AREA. 100u" (2.54um) - 200u" (5.08um) TIN PLATING OVER 50u" (1.27um) - 100u" (2.54um) NICKEL UNDERPLATE IN P.C. BOARD LEG AREA. 50u" (1.27um) NICKEL UNDERPLATE OVER REMAINING AREA.

⑨ CONTACT PLATING: 30u" (0.76um) MIN. GXT PLATING OVER 50u" (1.27um) NICKLE MIN. UNDERPLATE IN CONTACT AREA. 100u" (2.54um) - 200u" (5.08um) TIN PLATING OVER 50u" (1.27um) - 100u" (2.54um) NICKLE UNDERPLATE IN P.C. BOARD LEG AREA. 50u" (1.27um) NICKLE UNDERPLATE OVER REMAINING AREA.

⑩ THE HOUSING WILL WITHSTAND EXPOSURE TO 260°C PEAK TEMPERATURE FOR 10 SECONDS IN A WAVE SOLDER APPLICATION WITH A 1.57mm MINIMUM THICK CIRCUIT BOARD.

⑪ THIS PRODUCT MEETS EUROPEAN UNION DIRECTIVES AND OTHER COUNTRY REGULATIONS AS DESCRIBED IN GS-22-008.

mat'l. code				tolerances unless otherwise specified			CUSTOMER COPY		<div>  <div>www.fciconnect.com</div> </div>																				
ltr	ecn no	dr	date	linear	.X±.3			projection	<div>  </div>																				
G					.XX±.13																								
					.XXX±.051																								
				angles	0°±2°			<div>  </div>	<div> <div> <div>product family</div> <div>size</div> </div> <div> <div>dwg no</div> <div> <div>71781</div> <div>4 of 4</div> </div> </div> </div>																				
				dr	P. PARSONS	3/5/96																							
				enrg	J. DAVID	3/5/96																							
				chr	GL LOO	1/04/05	scale	2:1	A																				
				appd	JOEY NG	1/04/05																							
sheet index	revision sheet																												

ACAD

PDM: Rev:G

STATUS:Released

Printed: Mar 14, 2007