

PRODUCT NUMBER
71607-YXXZLF

WHEN NEEDED, SUFFIX LETTER "LF"
INDICATES THE PRODUCT IS RoHS
COMPATIBLE, SEE NOTE 6

OPTIONAL LETTER

A: PRODUCT PACKED IN TAPE & REEL, SEE TA856.

NUMBER OF POSITIONS: 02 TO 40.

PLATING CODE

3= 0.76 μ m GOLD ON CONTACT AREA.

3.81 μ m TIN-LEAD ON TAIL.

4= 5 μ m TIN-LEAD ON CONTACT AREA.

3.81 μ m TIN-LEAD ON TAIL.

8= 0.38 μ m GOLD ON CONTACT AREA.

3.81 μ m TIN-LEAD ON TAIL.

WHEN SUFFIX "LF" IS REQUIRED, 2 μ m MIN MATTE
TIN OVER 1.27 MIN Ni IS SUPPLIED INSTEAD OF SnPb.

NOTES:

- 1 - HOUSING MAT'L: THERMOPLASTIC GLASS FILLED
FLAME RETARDANT PER UL 94 V-0 COLOR: GREY.
- 2 - TERMINAL MATERIAL: PHOSPHOR BRONZE.
- 3 - 2 UP TO 4 POSITIONS PRODUCT PACKED IN PLASTIC
5 UP TO 40 POSITIONS PRODUCT PACKED IN TUBE.
- 4 - TO DETERMINE DIMENSIONS:
N = NUMBER OF POSITIONS
EXAMPLE: 8 POS: (N \times 2.54)-0.08=20.24 mm
- 5 - RECOMMENDED IR PROFIL PER TA 842.
- 6 - RoHS COMPATIBLE PRODUCT SPECIFICATIONS

a - PLATING:

- "LF" MEANS THE PRODUCT IS LEAD-FREE,
2 μ m MINIMUM MATTE TIN OVER 1.27 μ m
MINIMUM NICKEL UNDERPLATE.

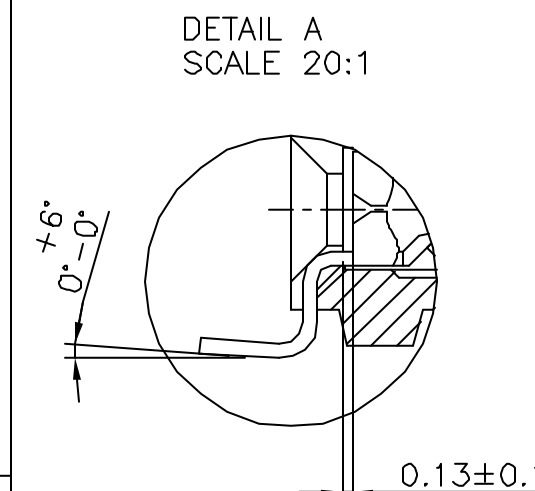
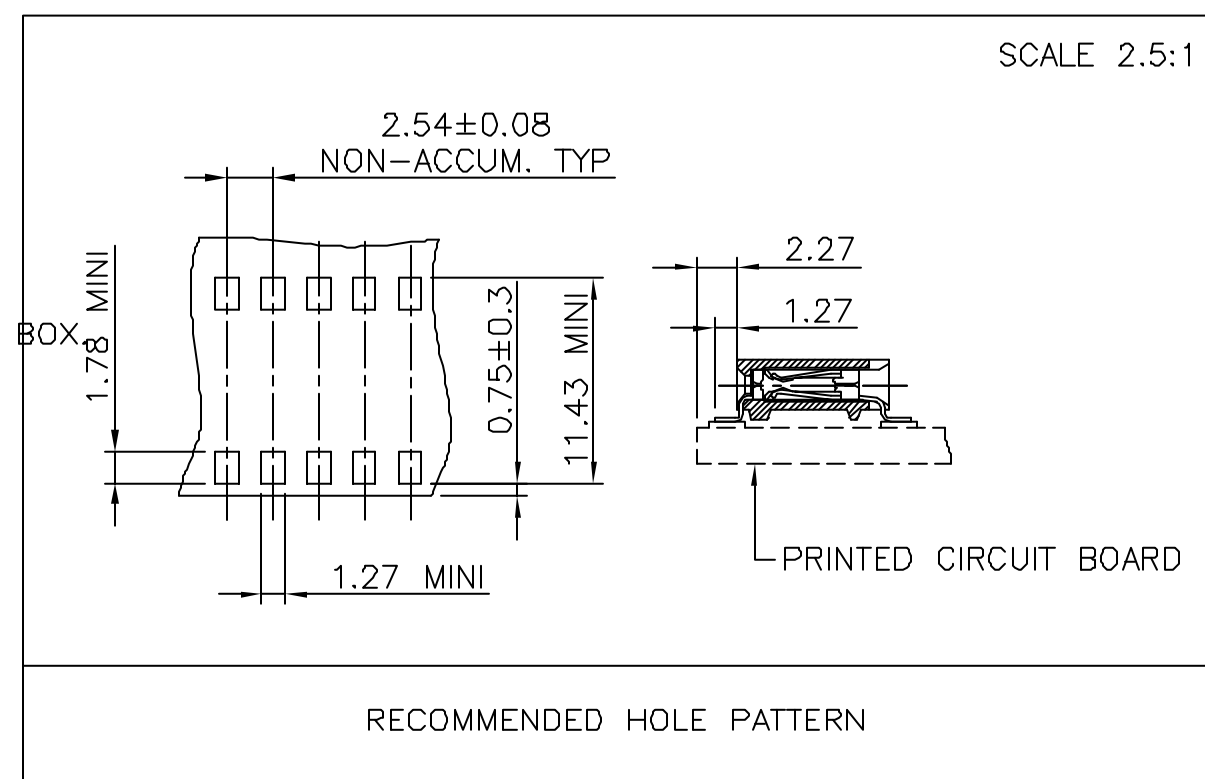
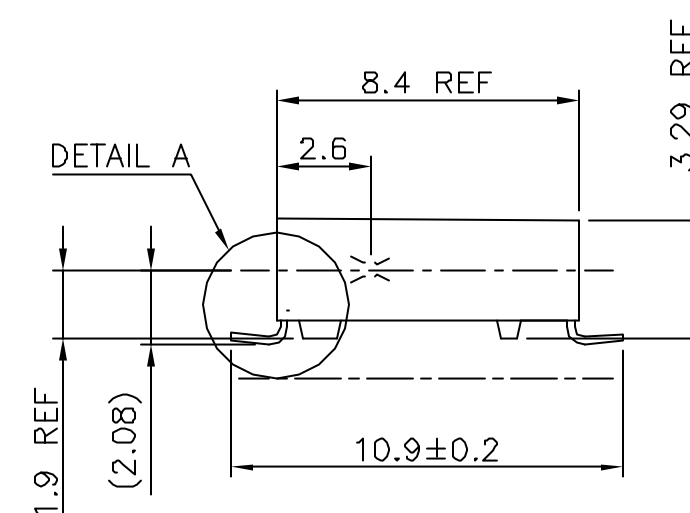
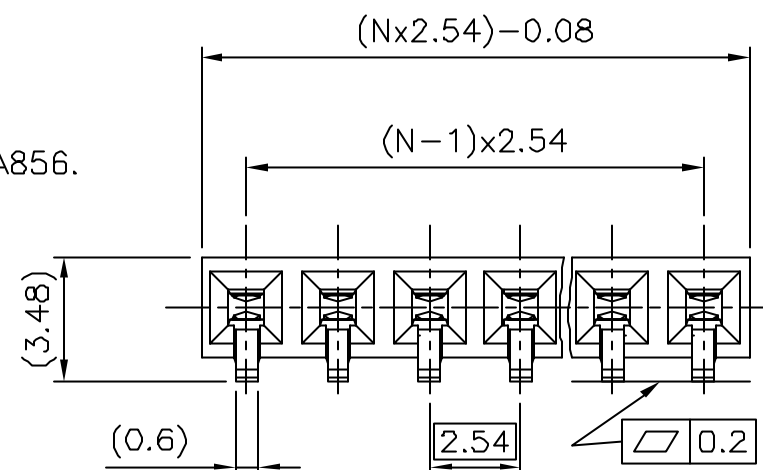
b - MANUFACTURING PROCESS COMPATIBILITY

- THE HOUSING WILL WITHSTAND EXPOSURE TO
260°C PEAK TEMPERATURE FOR 30 SECONDS
MAX IN A CONVECTION, INFRA-RED OR VAPOR
PHASE OR REFLOW OVEN.

c - LABELING:

- MEETS PACKAGING SPECS AS PER GS-14-920

d - LEGAL STATEMENT: SEE GS-22-008



mat'l. code SEE NOTE 1				surface ISO 1302	tolerance ISO 406 ISO 1101	projection	product family DUBOX			
ltr	ecn no	dr	date	tolerances unless otherwise specified		mm	title BtB RECEPT. HORIZ SR SMT			
T	F04-0347	DLE	04.11.08	angles	linear					
U	F06-0204	DLE	06.06.10	±2°		scale 10:1	dwg no 71607			
				dr	P.NIZZI	94.03.21				
				enr	P NIZZI	99.06.08	sheet 1 of 1 size A3			
				chr	JF NOTTEAU	97.05.13				
				appd	PNZ	99.06.08	type CUSTOMER Drawing			
sheet index	revision sheet									