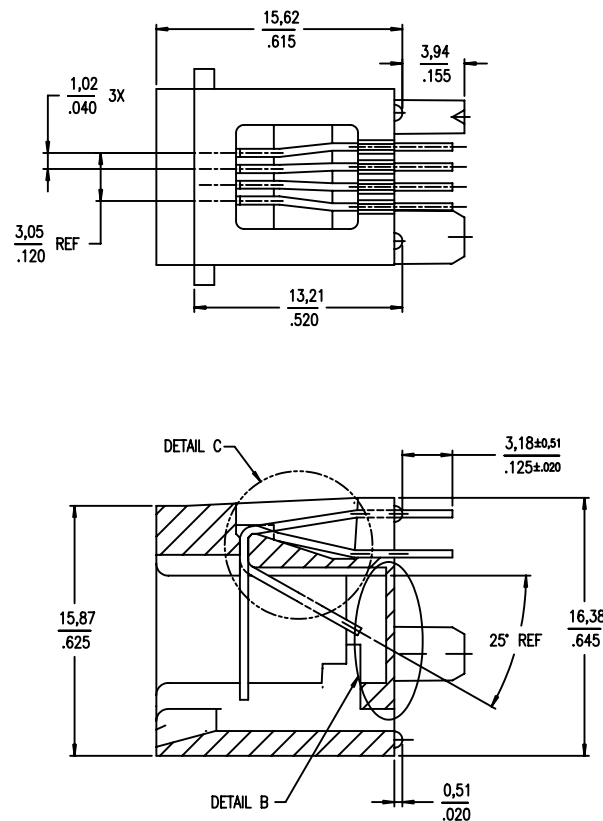
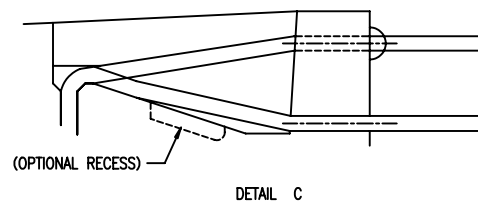


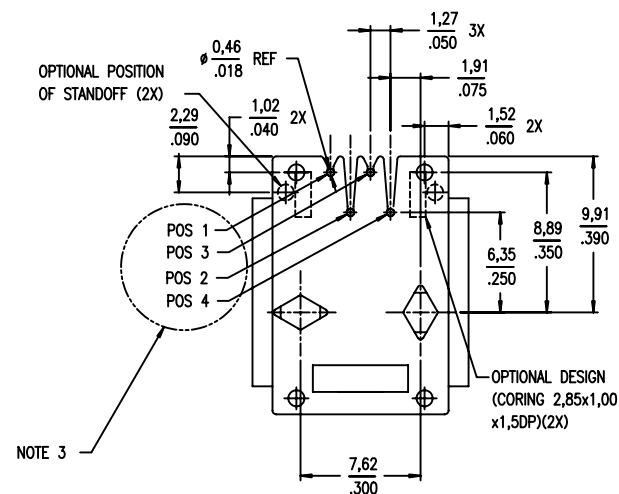
DETAIL B -90° ROTATED
(OPTIONAL DESIGN
BERG TAIWAN ONLY)


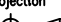



SECTION A-A



DETAIL C



mat'l. code				tolerances unless otherwise specified				CUSTOMER COPY		 www.fciconnect.com	
ltr	ecn no	dr	date	linear	.X \pm .30		projection 	title	4 POS VERTICAL P.C.B. MOD JACK ASSY		
L	W70900	BOB M	06/04/97		.XX \pm .15						
M	T70458	CL	10/21/97		.XXX \pm .03						
N	S90142	JSR	10/4/99		0" \pm 2"						
P	N05-0002	YS	01/06/05	dr	CATHY LIN	10/21/97	 mm	product family	MOD JACK		code
R	N08-0170	SH	10/10/08	engr	TONY CHIEN	10/21/97					
				chr	TONY CHIEN	10/21/97					
				apdd	JENN TSAO	10/21/97	scale	3:1	A3	69253	sheet 1 of 2
sheet index	revision sheet		R	R							
4			1	2							
								5	cage code		6
								22526			

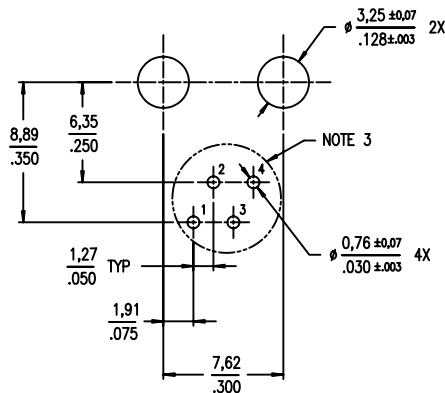


PRODUCT NO.	POSITIONS LOADED	CONTACT PLATING	HOUSING COLOR	NOTES
69253-001 -001LF -011LF	ALL	30u" GXT	BLACK	-
-002 -002LF -012LF	ALL	30u" / 0,76u Au	BLACK	-
-003 -003LF -013LF	ALL	30u" GXT	BLACK	NOTE 1
-004 -004LF -014LF	ALL	50u" / 1,27u Au	BLACK	-
-005 -005LF -015LF	ALL	30u" GXT	GREY	-
-006 -006LF -016LF	ALL	15u" GXT	BLACK	-

LEAD FREE PRODUCT NO.

0: MEETS WAVE SOLDER PROCESS PRODUCT NO.

1: MEETS PIP PROCESS PRODUCT NO.



BOARD LAYOUT
VIEWED FROM TOP

NOTE :

- ① SPECIAL PACKAGING.
- 2 GXT IS 0,76um / 30u" OR 0,28um / 15u" MIN GXT WITH Au FLASH OVER 1,27um / 50u" MIN Ni.
- ③ THIS PIN NUMBERING IS OPPOSITE TO FCC, PART 68, SUBPART F REQUIREMENTS.
- 4 THIS PRODUCT MEETS EUROPEAN UNION DIRECTIVES AND OTHER COUNTRY REGULATIONS AS DESCRIBED IN GS-22-008.
- 5 THE HOUSING WILL WITHSTAND EXPOSURE TO 260°C PEAK TEMPERATURE FOR 10 SECONDS IN A WAVE SOLDER APPLICATION WITH A 1.6mm MINIMUM THICK CIRCUIT BOARD.
- 6 IF LF P/N PACKAGING MEETS GS-14-920 SPECIFICATION.

mat'l. code				tolerances unless otherwise specified				CUSTOMER COPY		FCI www.fciconnect.com	
ltr	ecn no	dr	date	linear	.X ±.30	projection mm	title 4 POS VERTICAL P.C.B. MOD JACK ASSY	product family MOD JACK	code -	size A3	sheet 2 of 2
R					.XX ±.13						
					.XXX ±.05						
				angles	0° ±2°						
		dr	CATHY LIN	10/21/97							
		engr	TONY CHIEN	10/21/97							
		chr	TONY CHIEN	10/21/97	scale						
		appd	JENN TSAO	10/21/97	3:1						
sheet index	revision sheet										
form no. 7530-001-103										cage code 22526	