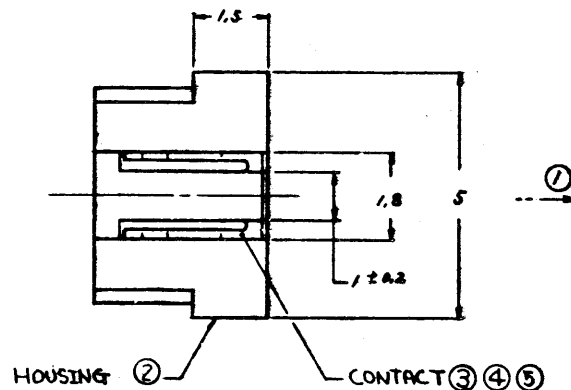
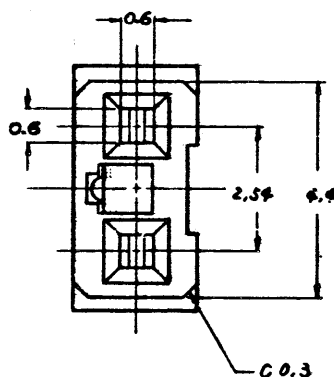
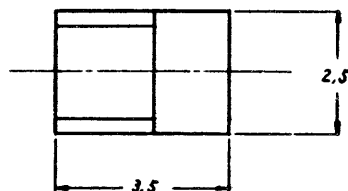


P/N	FINISH	RECOMMENDED HEADER P/N	HOUSING COLOR
68905-001	SEE NOTE ③	68907-010 68908-020	NATURAL
68905-002	SEE NOTE ④	68907-110 68908-120	NATURAL
68905-101	SEE NOTE ③	68907-010 68908-020	BLACK
68905-102	SEE NOTE ④	68907-110 68908-120	BLACK
68905-201	SEE NOTE ③	68907-010 68908-020	RED
68905-301	SEE NOTE ⑤	68908-320	BLACK

REVISIONS			
REV	DESCRIPTION	BY	DA
A	PREPARED (TJFH RWC)	HE	8/1
B	REVISED PER ECR # J8412	HB	5/1
C	REVISED PER ECN # 352	T.K	10/51
D	REVISED PER ECR # J8416	T.K	9/1



NOTES

- ① CONTACT RETENSION FORCE AGAINST THIS DIRECTION 0.8 kg MIN.
- ② HOUSING
MATERIAL: 66 NYLON UL94V-0
COLOR: SEE TABLE.
- ③ CONTACT
MATERIAL: PHOSPHOR BRONZE
FINISH: SELECTIVE GOLD PLATING
0.1um THK. MIN
UNDER PLATING Ni 1.2um THK. MIN.
- ④ CONTACT
MATERIAL: PHOSPHOR BRONZE (PRE-TIN-LEAD PLATED)
FINISH: TIN-LEAD PLATING 1um THK. MIN
WITHOUT UNDER PLATING
- ⑤ CONTACT
MATERIAL: PHOSPHOR BRONZE
FINISH: SELECTIVE GOLD PLATING
0.076um THK. MIN
UNDER PLATING Ni 1.2um THK. MIN.

CUSTOMER COPY FOR REFERENCE ONLY										DuPont Electronics 	
DO NOT SCALE DRAWING		TOLERANCES UNLESS OTHERWISE NOTED		INCH	MM	DR	MATL	DATE			
		LINEAR		±0.25	±0.25	CK'D	SEE NOTES	5/24/88			
		RADI		±0.25	±0.25	ENGR	② ③ ④	5/24/88			
		ANGLES		±2°	±2°	APPR	FINISH	5/24/88			
NEXT ASSY		USED ON		THIRD ANGLE PROJECTION		SEE TABLE		SCALE	SIZE	DWG. NO.	
APPLICATION				1/8"=1"				10-1	B	68905	
										TITLE LU JUMP CONNECTOR SHEET 1 OF 1	

NOTE: This print is the property of and embodies proprietary designs of Berg Electronics. No part of the design shown on this print may be used in any way without the written consent of Berg Electronics, New Cumberland, Pa.