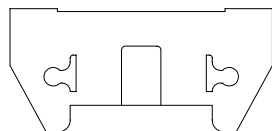
[illegible]

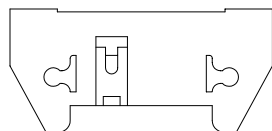
	PLATING	NOTE 6
1	30u"/.76u Au OVER 50u "/1.27u Ni	NOTE 14
2	30u"/.76u GXT/GOLD FLASH	NOTE 14
4	30u"/.76u GXT DUPLEX	
4LF	30u"/.76u GXT & 100u"/2.54u Sn DUPLEX	
5	30u"/.76u GOLD DUPLEX	
5LF	30u"/.76u GOLD & 100u"/2.54u Sn DUPLEX	

# NOTES:

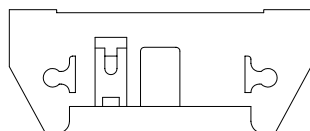
1. BODY MATERIAL; 30% GLASS FILLED POLYESTER  
FLAME RETARDANT PER UL 94-V0 COLOR-BLUE.  
-1XX TO -6XX BLUE PBT  
-7XX TO -9XX GREY PBT
2. UNLESS OTHERWISE SPECIFIED, 1° MAX DRAFT  
PERMISSIBLE ON ALL SURFACES.
- ③ DIM B BASIC DIM SHALL BE LOCATED SYMMETRICAL  
TO DATUM -Y-.
4. TRIANGLE, LOGO, & PART NO. AND THEIR LOCATIONS OPTIONAL.
- ⑤ PIN MATERIAL; 3/4 HD. PHOSPHOR BRONZE ALLOY  
UNS-C51000.
- ⑥ TWO NON-CRITICAL SIDES OF TIPS NOT PLATED.  
TYP BOTH ENDS.
7. RECOMMENDED MOUNTING SCREW - #2-56 FILLISTER  
HEAD MACHINE SCREW .25/6.35 LONG FOR  
.063/1.58 & .094/2.38 BOARDS, .313/7.93 LONG  
FOR .125/3.18 BOARDS.
8. 3 LBS/1.36 KG PIN RETENTION IN BOTH DIRECTIONS.
9. LOW PROFILE LATCHES TO BE USED WITH FEMALE  
CONNECTOR WITHOUT STRAIN RELIEF STANDARD  
LATCHES TO BE USED WITH FEMALE CONNECTORS  
WITH STRAIN RELIEF.
- ⑩ ADD AN "A" AFTER THE 8 DIGIT PART NUMBER FOR  
CUSTOMER SPECIAL.
11. RECOMMENDED PLATED-THRU-HOLE DIMENSIONS ARE:  
DRILLED HOLE: .0453/1.151±.0010/.025 DIA  
COPPER PLATING THICKNESS .001/.025 TO .003/.076  
SOLDER PLATING THICKNESS: .0003/.076 TO .0007/.0178  
OVERALL HOLE SIZE: .040/1.016±.003/.076 DIA
- ⑫ ADD "LF" SUFFIX AT THE END OF PART NUMBER FOR LEAD FREE OPTION.
- ⑬ THESE PRODUCT MEETS EUROPEAN UNION DIRECTIVES AND OTHER  
COUNTRY REGULATION AS DESCRIBED IN GS-22-008.
- ⑭ PLATING OPTIONS:  
MAY BE EITHER GOLD OR GXT PLATED AT MANUFACTURER'S OPTION.
15. THE PRODUCT IS NOT INTENDED TO BE EXPOSED TO A MANUFACTURING SOLDER  
PROCESS.



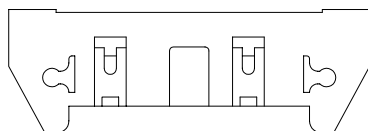
2x5  
STYLE A





2x5  
STYLE B



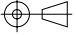
2x7  
STYLE C



2 X 8 & LARGER  
STYLE D

mat'l. code					surface ISO 1302 ✓		tolerance ISO 406 ISO 1101		projection 		product family QUICKIE								
ltr		ecn no		dr		date		tolerances unless otherwise specified				title							
AG								angles		linear		.XX±.01/.3 .xxx±.005/.13		INCH/MM		P.F. HDR. ASSEMBLY SEA HORSE 4 WALL			
								0°±2°				.xxx±.0020/.051		scale 1:1					
								dr		M. CLOUSER		3/01/90				dwg no		sheet2 of13size	
								engr		M. SMYK		3/01/90				68710		A.	
								chr		M. SMYK		3/01/90							
								appd		M. SMYK		3/01/90							
sheet index		revision sheet																type Product Customer Drawing	

1													2													3													4													5													6												
PRODUCT NUMBER		SIZE		STYLE		LATCH		DIM A		DIM B		DIM C		DIM D		DIM E		PIN PLATING		LEAD FREE PIN PLATING		LEAD FREE OPTION																																																							
68710-001		2 X 5		A		NONE		1.26/32.00		.400/10.16		.720/18.28		1.100/27.94		.160/4.06		1		1		NOTE 12																																																							
-002																.160/4.06		2		2																																																									
-003																.610/15.49		1		1																																																									
-004																.610/15.49		2		2																																																									
-005																.733/18.62		1		1																																																									
-006						NONE										.733/18.62		2		2																																																									
-007						STD.										.160/4.06		1		1																																																									
-008																.160/4.06		2		2																																																									
-009																.610/15.49		1		1																																																									
-010																.610/15.49		2		2																																																									
-011																.733/18.62		1		1																																																									
-012						STD.										.733/18.62		2		2																																																									
-013						LOW PROFILE										.160/4.06		1		1																																																									
-014																.160/4.06		2		2																																																									
-015																.610/15.49		1		1																																																									
-016																.610/15.49		2		2																																																									
-017																.733/18.62		1		1																																																									
-018				A		LOW PROFILE										.733/18.62		2		2																																																									
-019				B		NONE										.160/4.06		1		1																																																									
-020																.160/4.06		2		2																																																									
-021																.610/15.49		1		1																																																									
-022																.610/15.49		2		2																																																									
-023																.733/18.62		1		1																																																									
-024						NONE										.733/18.62		2		2																																																									
-025						STD.										.160/4.06		1		1																																																									
-026																.160/4.06		2		2																																																									
-027																.610/15.49		1		1																																																									
-028																.610/15.49		2		2																																																									
-029																.733/18.62		1		1																																																									
-030						STD.										.733/18.62		2		2																																																									
-031						LOW PROFILE										.160/4.06		1		1																																																									
-032																.160/4.06		2		2																																																									
-033																.610/15.49		1		1																																																									
-034																.610/15.49		2		2																																																									
-035																.733/18.62		1		1																																																									
68710-036		2 X 5		B		LOW PROFILE		1.26/32.00		.400/10.16		.720/18.28		1.100/27.94		.733/18.62		2		2		NOTE 12																																																							

mat'l. code				surface ISO 1302 ✓		tolerance ISO 406 ISO 1101		projection 		product family QUICKIE			
ltr		ecn no		dr		date		tolerances unless otherwise specified		title			
AG								angles linear .XX±.01/.3		INCH/MM		P.F. HDR. ASSEMBLY	
								0"±2"		scale 1:1		SEA HORSE 4 WALL	
								dr M. CLOUSER 3/01/90		FCI		dwg no sheet3 of13size	
								enr M. SMYK 3/01/90				68710 A3	
								chr M. SMYK 3/01/90				type Product Customer Drawing	
								appd M. SMYK 3/01/90					
sheet index		revision sheet											

form: A3

1

2

3

4

5

6



[illegible]





FCIconnect.com

Copyright FCI

PRODUCT NUMBER	SIZE	STYLE	LATCH	DIM A	DIM B	DIM C	DIM D	DIM E	PIN PLATING	LEAD FREE PIN PLATING	LEAD FREE OPTION
68710-145	2 X 17	D	NONE	2.46/62.48	1.600/40.64	1.920/48.79	2.300/58.42	.160/4.06	1	1	NOTE 12
-146								.160/4.06	2	2	
-147								.610/15.49	1	1	
-148								.610/15.49	2	2	
-149								.733/18.62	1	1	
-150			NONE					.733/18.62	2	2	
-151			STD.					.160/4.06	1	1	
-152								.160/4.06	2	2	
-153								.610/15.49	1	1	
-154								.610/15.49	2	2	
-155								.733/18.62	1	1	
-156			STD.					.733/18.62	2	2	
-157			LOW PROFILE					.160/4.06	1	1	
-158								.160/4.06	2	2	
-159								.610/15.49	1	1	
-160								.610/15.49	2	2	
-161								.733/18.62	1	1	
-162	2 X 17	D	LOW PROFILE	2.46/62.48	1.600/40.64	1.920/48.79	2.300/58.42	.733/18.62	2	2	
-163	2 X 20	D	NONE	2.76/70.10	1.900/48.26	2.220/56.39	2.600/66.04	.160/4.06	1	1	
-164								.160/4.06	2	2	
-165								.610/15.49	1	1	
-166								.610/15.49	2	2	
-167								.733/18.62	1	1	NOTE 12
-168			NONE					.733/18.62	2	2	
-169			STD.					.160/4.06	1	1	
-170								.160/4.06	2	2	
-171								.610/15.49	1	1	
-172								.610/15.49	2	2	
-173								.733/18.62	1	1	
-174			STD.					.733/18.62	2	2	
-175			LOW PROFILE					.160/4.06	1	1	
-176								.160/4.06	2	2	
-177								.610/15.49	1	1	
-178								.610/15.49	2	2	
-179								.733/18.62	1	1	
68710-180	2 X 20	D	LOW PROFILE	2.76/70.10	1.900/48.26	2.220/56.39	2.600/66.04	.733/18.62	2	2	NOTE 12

mat'l. code				surface ISO 1302 ✓		tolerance ISO 406 ISO 1101		projection 		product family QUICKIE	
ltr				ecn no		dr		date		title	
AG										P.F. HDR. ASSEMBLY SEA HORSE 4 WALL	
				angles		linear		.XX±.01/.3 .XXX±.005/.13		INCH/MM	
				0°±2'				.XXXX±.0020/.051		scale 1:1	
				dr		M. CLOUSER		3/01/90		dwg no	
				enr		M. SMYK		3/01/90		sheet 7 of 13	
				chr		M. SMYK		3/01/90		size	
				appd		M. SMYK		3/01/90		A3	
sheet index		revision sheet								type Product Customer Drawing	



FCIconnect.com

Copyright FCI

PRODUCT NUMBER	SIZE	STYLE	LATCH	DIM A	DIM B	DIM C	DIM D	DIM E	PIN PLATING	LEAD FREE PIN PLATING	LEAD FREE OPTION
68710-181	2 X 22	D	NONE	2.96/75.18	2.100/53.34	2.420/61.47	2.800/71.12	.160/4.06	1	1	NOTE 12
-182								.160/4.06	2	2	
-183								.610/15.49	1	1	
-184								.610/15.49	2	2	
-185								.733/18.62	1	1	
-186			NONE					.733/18.62	2	2	
-187			STD.					.160/4.06	1	1	
-188								.160/4.06	2	2	
-189								.610/15.49	1	1	
-190								.610/15.49	2	2	
-191								.733/18.62	1	1	
-192			STD.					.733/18.62	2	2	
-193			LOW PROFILE					.160/4.06	1	1	
-194								.160/4.06	2	2	
-195								.610/15.49	1	1	
-196								.610/15.49	2	2	
-197								.733/18.62	1	1	
-198	2 X 22	D	LOW PROFILE	2.96/75.18	2.100/53.34	2.420/61.47	2.800/71.12	.733/18.62	2	2	
-199	2 X 25	D	NONE	3.26/82.80	2.400/60.96	2.720/69.09	3.100/78.74	.160/4.06	1	1	
-200								.160/4.06	2	2	
-201								.610/15.49	1	1	
-202								.610/15.49	2	2	
-203								.733/18.62	1	1	
-204			NONE					.733/18.62	2	2	
-205			STD.					.160/4.06	1	1	
-206								.160/4.06	2	2	
-207								.610/15.49	1	1	
-208								.610/15.49	2	2	
-209								.733/18.62	1	1	
-210			STD.					.733/18.62	2	2	
-211			LOW PROFILE					.160/4.06	1	1	
-212								.160/4.06	2	2	
-213								.610/15.49	1	1	
-214								.610/15.49	2	2	
-215								.733/18.62	1	1	
68710-216	2 X 25	D	LOW PROFILE	3.26/82.80	2.400/60.96	2.720/69.09	3.100/78.74	.733/18.62	2	2	NOTE 12

mat'l. code				surface ISO 1302 ✓		tolerance ISO 406 ISO 1101		projection 		product family QUICKIE	
ltr				ecn		no		dr		date	
AG				angles		linear		linear		INCH/MM	
				0°±2'		.XX±.01/.3		.XXX±.005/.13		scale 1:1	
				dr		M. CLOUSER		3/01/90		sheet8 of13size	
				enr		M. SMYK		3/01/90		A3	
				chr		M. SMYK		3/01/90		type Product Customer Drawing	
				appd		M. SMYK		3/01/90			
sheet index		revision sheet									





FCIconnect.com

Copyright FCI

PRODUCT NUMBER	SIZE	STYLE	LATCH	DIM A	DIM B	DIM C	DIM D	DIM E	PIN PLATING	LEAD FREE PIN PLATING	LEAD FREE OPTION
68710-217	2 X 30	D	NONE	3.76/95.50	2.900/73.66	3.220/81.79	3.600/91.44	.160/4.06	1	1	NOTE 12
-218								.160/4.06	2	2	
-219								.610/15.49	1	1	
-220								.610/15.49	2	2	
-221								.733/18.62	1	1	
-222			NONE					.733/18.62	2	2	
-223			STD.					.160/4.06	1	1	
-224								.160/4.06	2	2	
-225								.610/15.49	1	1	
-226								.610/15.49	2	2	
-227								.733/18.62	1	1	
-228			STD.					.733/18.62	2	2	
-229			LOW PROFILE					.160/4.06	1	1	
-230								.160/4.06	2	2	
-231								.610/15.49	1	1	
-232								.610/15.49	2	2	
-233								.733/18.62	1	1	
-234	2 X 30	D	LOW PROFILE	3.76/95.50	2.900/73.66	3.220/81.79	3.600/91.44	.733/18.62	2	2	
-235	2 X 5	A	STD.	1.26/32.00	.400/10.16	.720/18.28	1.100/27.94	.250/6.35	2	2	
-236	2 X 8	D		1.56/39.62	.700/17.78	1.020/25.91	1.400/35.56				
-237	2 X 10			1.76/44.70	.900/22.86	1.220/30.99	1.600/40.64				
-238	2 X 13			2.06/52.34	1.200/30.48	1.520/38.61	1.900/48.26				
-239	2 X 17			2.46/62.48	1.600/40.64	1.920/48.79	2.300/58.42				
-240	2 X 20			2.76/70.10	1.900/48.26	2.220/56.39	2.600/66.04				
-241	2 X 25			3.26/82.80	2.400/60.96	2.720/69.09	3.100/78.74				
-242	2 X 30	D	STD.	3.76/95.50	2.900/73.66	3.220/81.79	3.600/91.44				
-243	2 X 15	D	STD.	2.26/57.40	1.400/35.56	1.720/43.69	2.100/53.34				
-244	2 X 5	A	NONE	1.26/32.00	.400/10.16	.720/18.28	1.100/27.94				
-245	2 X 8	D		1.56/39.62	.700/17.78	1.020/25.91	1.400/35.56				
-246	2 X 10			1.76/44.70	.900/22.86	1.220/30.99	1.600/40.64				
-247	2 X 13			2.06/52.34	1.200/30.48	1.520/38.61	1.900/48.26				
-248	2 X 17			2.46/62.48	1.600/40.64	1.920/48.79	2.300/58.42				
-249	2 X 20			2.76/70.10	1.900/48.26	2.220/56.39	2.600/66.04				
-250	2 X 25			3.26/82.80	2.400/60.96	2.720/69.09	3.100/78.74				
68710-251	2 X 30			3.76/95.50	2.900/73.66	3.220/81.79	3.600/91.44	.250/6.35	2	2	NOTE 12

NOTE 10  
NOTE 10  
NOTE 10  
NOTE 10  
NOTE 10  
NOTE 10  
NOTE 10  
NOTE 10

mat'l. code				surface ISO 1302 ✓		tolerance ISO 406 ISO 1101		projection 		product family QUICKIE			
ltr		ecn no		dr		date		tolerances unless otherwise specified		title			
AG								angles linear .XX±.01/.3 0°±2' .XXX±.005/.13 .XXXX±.0020/.051		INCH/MM scale 1:1		P.F. HDR. ASSEMBLY SEA HORSE 4 WALL	
								dr M. CLOUSER 3/01/90		dwg no		sheet9 of13size	
								enr M. SMYK 3/01/90		68710		A3	
								chr M. SMYK 3/01/90		type		Product Customer Drawing	
								appd M. SMYK 3/01/90					
sheet index		revision sheet											



1				2				3				4				5				6			
PRODUCT NUMBER	SIZE	STYLE	LATCH	DIM A	DIM B	DIM C	DIM D	DIM E	PIN PLATING	LEAD FREE PIN PLATING	NOTES	PIN REMOVED	LEAD FREE OPTION										
68710-400	2 x 5	A	NONE	1.26/32.00	.400/10.16	.720/18.28	1.100/27.94	.250/6.35	4	4LF			NOTE 12										
-401	2 x 7	C		1.460/37.08	.600/15.24	.920/23.37	1.300/33.02																
-402	2 x 8	D		1.56/39.62	.700/17.78	1.020/25.91	1.400/35.56																
-403	2 x 10			1.76/44.70	.900/22.86	1.220/30.99	1.600/40.64																
-404	2 x 12			1.960/49.78	1.100/27.94	1.420/36.07	1.800/45.72																
-405	2 x 13			2.06/52.34	1.200/30.48	1.520/38.61	1.900/48.26																
-406	2 x 15			2.26/57.40	1.400/35.56	1.720/43.69	2.100/53.34																
-407	2 x 17			2.46/62.48	1.600/40.64	1.920/48.79	2.300/58.42																
-408	2 x 20			2.76/70.10	1.900/48.26	2.220/56.39	2.600/66.04																
-409	2 x 22			2.960/75.18	2.100/53.34	2.420/61.47	2.800/71.12																
-410	2 x 25			3.26/82.80	2.400/60.96	2.720/69.09	3.100/78.74																
-411	2 x 30	D	NONE	3.76/95.50	2.900/73.66	3.220/81.79	3.600/91.44																
-420	2 x 5	A	STD.	1.26/32.00	.400/10.16	.720/18.28	1.100/27.94				NOTE 10												
-421	2 x 7	C		1.460/37.08	.600/15.24	.920/23.37	1.300/33.02				NOTE 10												
-422	2 x 8	D		1.56/39.62	.700/17.78	1.020/25.91	1.400/35.56				NOTE 10												
-423	2 x 10			1.76/44.70	.900/22.86	1.220/30.99	1.600/40.64				NOTE 10												
-424	2 x 12			1.960/49.78	1.100/27.94	1.420/36.07	1.800/45.72				NOTE 10												
-425	2 x 13			2.06/52.34	1.200/30.48	1.520/38.61	1.900/48.26				NOTE 10												
-426	2 x 15			2.26/57.40	1.400/35.56	1.720/43.69	2.100/53.34				NOTE 10												
-427	2 x 17			2.46/62.48	1.600/40.64	1.920/48.79	2.300/58.42				NOTE 10												
-428	2 x 20			2.76/70.10	1.900/48.26	2.220/56.39	2.600/66.04				NOTE 10												
-429	2 x 22			2.960/75.18	2.100/53.34	2.420/61.47	2.800/71.12				NOTE 10												
-430	2 x 25			3.26/82.80	2.400/60.96	2.720/69.09	3.100/78.74				NOTE 10												
-431	2 x 30	D	STD.	3.76/95.50	2.900/73.66	3.220/81.79	3.600/91.44				NOTE 10												
-440	2 x 5	A	LOW PROFILE	1.26/32.00	.400/10.16	.720/18.28	1.100/27.94																
-441	2 x 7	C		1.460/37.08	.600/15.24	.920/23.37	1.300/33.02																
-442	2 x 8	D		1.56/39.62	.700/17.78	1.020/25.91	1.400/35.56																
-443	2 x 10			1.76/44.70	.900/22.86	1.220/30.99	1.600/40.64																
-444	2 x 12			1.960/49.78	1.100/27.94	1.420/36.07	1.800/45.72																
-445	2 x 13			2.06/52.34	1.200/30.48	1.520/38.61	1.900/48.26																
-446	2 x 15			2.26/57.40	1.400/35.56	1.720/43.69	2.100/53.34																
-447	2 x 17			2.46/62.48	1.600/40.64	1.920/48.79	2.300/58.42																
-448	2 x 20			2.76/70.10	1.900/48.26	2.220/56.39	2.600/66.04																
-449	2 x 22			2.960/75.18	2.100/53.34	2.420/61.47	2.800/71.12																
-450	2 x 25			3.26/82.80	2.400/60.96	2.720/69.09	3.100/78.74																
-451	2 x 30	D	LOW PROFILE	3.76/95.50	2.900/73.66	3.220/81.79	3.600/91.44	.250/6.35	4	4LF													
68710-452	2 x 7	C	STD.	1.460/37.08	.600/15.24	.920/23.37	1.300/33.02	.160/4.06	1	1	NOTE 10	14	NOTE 12										

mat'l. code

litr ecn no dr date

AG

surface

ISO 1302

tolerance

ISO 406

ISO 1101

tolerances unless otherwise specified

linear

0°±2'

dr

enrg

chr

appd

sheet index

revision sheet

projection

INCH/MM

scale 1:1

FCI

product family

QUICKIE

title

P.F. HDR. ASSEMBLY  
SEA HORSE 4 WALL

dwg no

68710

sheet1 of 13

size

A3

type

Product Customer Drawing

1

2

3

4

5

6

form: A3

1

2

3

4

5

6




FCIconnect.com

Copyright FCI

PRODUCT NUMBER	SIZE	STYLE	LATCH	DIM A	DIM B	DIM C	DIM D	DIM E	PIN PLATING	LEAD FREE PIN PLATING	POSITION OMITTED	LEAD FREE OPTION
68710-500	2 x 5	A	NONE	1.260/32.00	.400/10.16	.720/18.28	1.100/27.94	.160/4.06	5	5LF		NOTE 12
-501	2 x 7	C		1.460/37.08	.600/15.24	.920/23.37	1.300/33.02					
-502	2 x 8	D		1.560/39.62	.700/17.78	1.020/25.91	1.400/35.56					
-503	2 x 10			1.760/44.70	.900/22.86	1.220/30.99	1.600/40.64					
-504	2 x 12			1.960/49.78	1.100/27.49	1.420/36.07	1.800/45.72					
-505	2 x 13			2.060/52.34	1.200/30.48	1.520/38.61	1.900/48.26					
-506	2 x 15			2.260/57.40	1.400/35.56	1.720/43.69	2.100/53.34					
-507	2 x 17			2.460/62.48	1.600/40.64	1.920/48.79	2.300/58.42					
-508	2 x 20			2.760/70.10	1.900/48.26	2.220/56.39	2.600/66.04					
-509	2 x 22			2.960/75.18	2.100/53.34	2.420/61.47	2.800/71.12					
-510	2 x 25			3.260/82.80	2.400/60.96	2.720/69.09	3.100/78.74					
-511	2 x 30	D	NONE	3.760/95.50	2.900/73.66	3.220/81.79	3.600/91.44					
-520	2 x 5	A	STD.	1.260/32.00	.400/10.16	.720/18.28	1.100/27.94					
-521	2 x 7	C		1.460/37.08	.600/15.24	.920/23.37	1.300/33.02					
-522	2 x 8	D		1.560/39.62	.700/17.78	1.020/25.91	1.400/35.56					
-523	2 x 10			1.760/44.70	.900/22.86	1.220/30.99	1.600/40.64					
-524	2 x 12			1.960/49.78	1.100/27.49	1.420/36.07	1.800/45.72					
-525	2 x 13			2.060/52.34	1.200/30.48	1.520/38.61	1.900/48.26					
-526	2 x 15			2.260/57.40	1.400/35.56	1.720/43.69	2.100/53.34					
-527	2 x 17			2.460/62.48	1.600/40.64	1.920/48.79	2.300/58.42					
-528	2 x 20			2.760/70.10	1.900/48.26	2.220/56.39	2.600/66.04					
-529	2 x 22			2.960/75.18	2.100/53.34	2.420/61.47	2.800/71.12					
-530	2 x 25			3.260/82.80	2.400/60.96	2.720/69.09	3.100/78.74					
-531	2 x 30	D	STD.	3.760/95.50	2.900/73.66	3.220/81.79	3.600/91.44					
-540	2 x 5	A	LOW PROFILE	1.260/32.00	.400/10.16	.720/18.28	1.100/27.94					2
-541	2 x 7	C		1.460/37.08	.600/15.24	.920/23.37	1.300/33.02					
-542	2 x 8	D		1.560/39.62	.700/17.78	1.020/25.91	1.400/35.56					
-543	2 x 10			1.760/44.70	.900/22.86	1.220/30.99	1.600/40.64					
-544	2 x 12			1.960/49.78	1.100/27.49	1.420/36.07	1.800/45.72					
-545	2 x 13			2.060/52.34	1.200/30.48	1.520/38.61	1.900/48.26					
-546	2 x 15			2.260/57.40	1.400/35.56	1.720/43.69	2.100/53.34					
-547	2 x 17			2.460/62.48	1.600/40.64	1.920/48.79	2.300/58.42					
-548	2 x 20			2.760/70.10	1.900/48.26	2.220/56.39	2.600/66.04					
-549	2 x 22			2.960/75.18	2.100/53.34	2.420/61.47	2.800/71.12					
-550	2 x 25			3.260/82.80	2.400/60.96	2.720/69.09	3.100/78.74					2
-551	2 x 30		LOW PROFILE	3.760/95.50	2.900/73.66	3.220/81.79	3.600/91.44					
-552	2 x 8		NONE	1.560/39.62	.700/17.78	1.020/25.91	1.400/35.56					
-553	2 x 8		STD	1.560/39.62	.700/17.78	1.020/25.91	1.400/35.56					
-554	2 x 10		NONE	1.760/44.70	.900/22.86	1.220/30.99	1.600/40.64					
-555	2 x 10		STD	1.760/44.70	.900/22.86	1.220/30.99	1.600/40.64		5	5LF	2	
68710-556	2 x 20	D	STD	2.760/70.10	1.900/48.26	2.220/56.39	2.600/66.04	.160/4.06	1	1	1,15,16,17,18,19,20,21,22,37,38,39,40	NOTE 12

NOTE 10  
NOTE 10  
NOTE 10  
NOTE 10  
NOTE 10  
NOTE 10  
NOTE 10  
NOTE 10  
NOTE 10  
NOTE 10  
NOTE 10  
NOTE 10

mat'l. code					surface ISO 1302 ✓		tolerance ISO 406 ISO 1101		projection 		product family QUICKIE					
ltr		ecn no		dr	date		tolerances unless otherwise specified					title				
AG							angles		linear			.XX±.01/.3		INCH/MM		
												.XXX±.005/.13				
							0°±2'					.XXXX±.0020/.051		scale 1:1		
							dr		M. CLOUSER			3/01/90		dwg no		
							engr		M. SMYK			3/01/90				
							chr		M. SMYK			3/01/90		sheet 12 of 13 size		
							appd		M. SMYK			3/01/90				
sheet index		revision sheet												A3		
														type Product Customer Drawing		



form: A3



FCIconnect.com

Copyright FCI

PRODUCT NUMBER	SIZE	STYLE	LATCH	DIM A	DIM B	DIM C	DIM D	DIM E	PIN PLATING	LEAD FREE PIN PLATING	REMARKS	PINS REMOVED	LEAD FREE OPTION
68710-620	2 x 5	A	STD.	1.260/32.00	.400/10.16	.720/18.28	1.100/27.94	.120/3.05	2	2	MINI-LIF		NOTE 12
↑ -621	2 x 7	C	STD.	1.460/37.08	.600/15.24	.920/23.37	1.300/33.02	.120/3.05	2	2	MINI-LIF		
-640	2 x 20	D	STD.	2.760/70.10	1.900/48.26	2.220/56.39	2.600/66.04	.120/3.05	2	2	MINI-LIF		
-650	2 x 25	D	STD.	3.260/82.80	2.400/60.96	2.720/69.09	3.100/78.74	.120/3.05	2	2	MINI-LIF		
-651	2 x 22	D	STD.	2.960/75.18	2.100/53.34	2.420/61.47	2.800/71.12	.160/4.06	1	1		REMOVE PINS: 2,3,6,7,10,11,14,15,18,19,22,23, 26,27,30,31,34,35,38,39,42,43 & 44	NOTE 12
-652	2 x 5	A	STD.	1.260/32.00	.400/10.16	.720/18.29	1.100/27.94	↑	↑	↑		REMOVE PINS: 10	
-653	2 x 5	B	STD.	1.260/32.00	.400/10.16	.720/18.29	1.100/27.94					REMOVE PINS: 10	
-654	2 x 7	C	STD.	1.460/37.08	.600/15.24	.920/23.37	1.300/33.02					REMOVE PINS: 14	
-710	2 x 5	A	NONE	1.260/32.00	.400/10.16	.720/18.28	1.100/27.94						
↑ -714	2 x 7	C	↑	1.460/37.08	.600/15.24	.920/23.37	1.300/33.02						
-716	2 x 8	D		1.560/39.62	.700/17.78	1.020/25.91	1.400/35.56						
-720	2 x 10	↑		1.760/44.70	.900/22.86	1.220/30.99	1.600/40.64						
-726	2 x 13			2.060/52.32	1.200/30.48	1.520/38.61	1.900/48.26						
-734	2 x 17			2.460/62.48	1.600/40.64	1.920/48.79	2.300/58.42						
-740	2 x 20			2.760/70.10	1.900/48.26	2.220/56.39	2.600/66.04						
-750	2 x 25	↓	↓	3.260/82.80	2.400/60.96	2.720/69.09	3.100/78.74						
-760	2 x 30	D	NONE	3.760/95.50	2.900/73.66	3.220/81.79	3.600/91.44						
-810	2 x 5	A	STD.	1.260/32.00	.400/10.16	.720/18.29	1.100/27.94						
-814	2 x 7	C	↑	1.460/37.08	.600/15.24	.920/23.37	1.300/33.02						
-816	2 x 8	D	↑	1.560/39.62	.700/17.78	1.020/25.91	1.400/35.56						
-820	2 x 10	↑		1.760/44.70	.900/22.86	1.220/30.99	1.600/40.64						
-826	2 x 13			2.060/52.32	1.200/30.48	1.520/38.61	1.900/48.26						
-834	2 x 17			2.460/62.48	1.600/40.64	1.920/48.79	2.300/58.42						
-840	2 x 20			2.760/70.10	1.900/48.26	2.220/56.39	2.600/66.04						
-850	2 x 25	↓	↓	3.260/82.80	2.400/60.96	2.720/69.09	3.100/78.74						
-860	2 x 30	D	STD.	3.760/95.50	2.900/73.66	3.220/81.79	3.600/91.44						
-910	2 x 5	A	LOW	1.260/32.00	.400/10.16	.720/18.29	1.100/27.94						NOTE 12
-914	2 x 7	C	↑	1.460/37.08	.600/15.24	.920/23.37	1.300/33.02						
-916	2 x 8	D		1.560/39.62	.700/17.78	1.020/25.91	1.400/35.56						
-920	2 x 10	↑		1.760/44.70	.900/22.86	1.220/30.99	1.600/40.64						
-926	2 x 13			2.060/52.32	1.200/30.48	1.520/38.61	1.900/48.26						
-934	2 x 17			2.460/62.48	1.600/40.64	1.920/48.79	2.300/58.42						
-940	2 x 20			2.760/70.10	1.900/48.26	2.220/56.39	2.600/66.04						
-950	2 x 25	↓	↓	3.260/82.80	2.400/60.96	2.720/69.09	3.100/78.74						
↓ 68710-960	2 x 30	D	LOW	3.760/95.50	2.900/73.66	3.220/81.79	3.600/91.44	.160/4.06	1	1			

mat'l. code				surface ISO 1302 ✓		tolerance ISO 406 ISO 1101		projection 		product family QUICKIE				
ltr	ecn	no	dr	date	tolerances unless otherwise specified				title					
AG					angles	.XX±.01/.3		INCH/MM		P.F. HDR. ASSEMBLY				
					linear	.XXX±.005/.13		scale 1:1		SEA HORSE 4 WALL				
					0°±2'	.XXXX±.0020/.051								
					dr	M. CLOUSER 3/01/90				dwg no		sheet13 of13size		
					enrg	M. SMYK 3/01/90				68710		A3		
					chr	M. SMYK 3/01/90								
					appd	M. SMYK 3/01/90				type Product Customer Drawing				
sheet index		revision sheet												

form: A3