



FCIconnect.com

Copyright FCI

PRODUCT NUMBER

SEE TABLE

68617 -XXX- LF

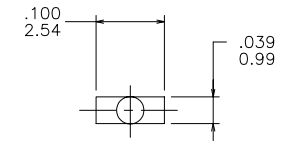
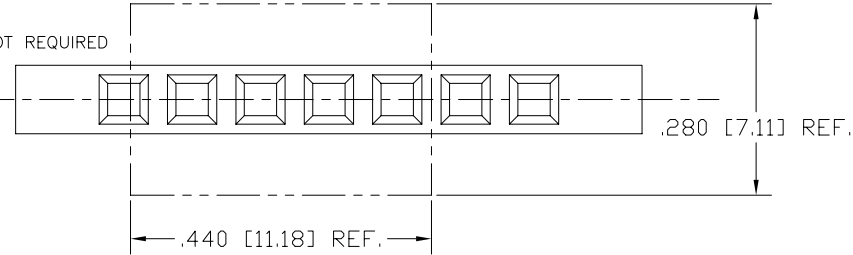
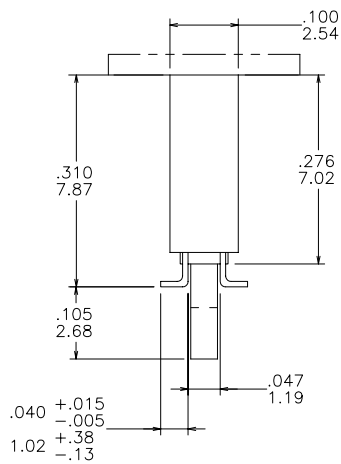
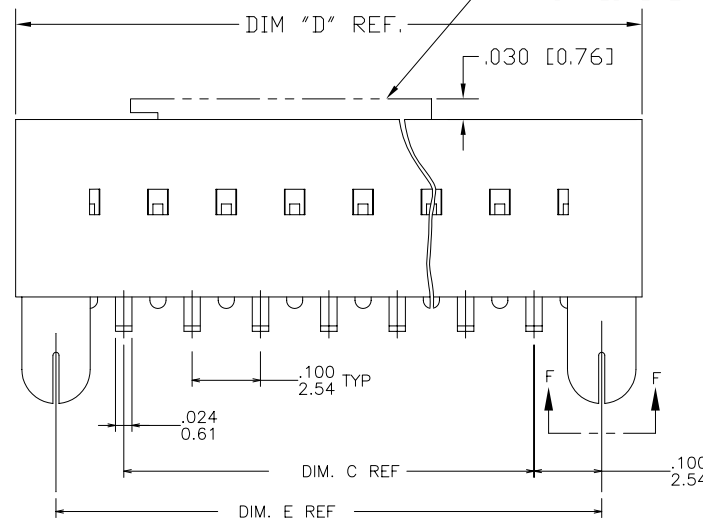
LEAD FREE OPTION

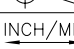
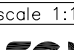
PACKAGING OPTION NOTE 10. OMIT IF NOT REQUIRED

NO OF POSITIONS PER ROW

PLATING CODE

BASE PART NUMBER

VIEW F-F
SCALE 10/1VACUUM CAP FOR TAPE & REEL
PACKAGING OPTION. SEE NOTE 7

mat'l. code SEE NOTES 1, 3 & 8					surface ISO 1302 ✓		tolerance ISO 406 ISO 1101	projection  INCH/MM scale 1:1	product family DUBOX				
ltr	ecn	no	dr	date	tolerances unless otherwise specified				title				
R	V20732	GIP		04/17/02	angles linear	.XX ±.01/0.3			SMT SINGLE ROW				
S	V21654	GIP		10/15/02		.XXX ±.005/0.13			LATCHED VCC ASSEMBLY				
T	V03-0309	HTB		04/28/03		.XXXX ±.0020/0.051							
U	V05-0463	DPU		06/28/05	dr	J. SHREINER	10/07/90		dwg no		sheet 1 of 5		size
V	M06-0237	MN		06/17/06	enrg	M. HAHN	10/07/90		68617				A3
W	M06-0433	AGS		10/31/06	chr	M. HAHN	10/07/90		type Product Customer Drawing				
X	M07-0198	MHT		4/24/07	appd	M. HAHN	10/07/90						
sheet	revision	X	X	X	X	X							
index	sheet	1	2	3	4	5							

form: A3

1

2

3

4

5

6

PRODUCT NO.

SEE TABLE

NOTES:

①

TERMINAL MATERIAL: PHOSPHOR BRONZE.

2.

RECOMMENDED APPLICATION DATA:

A.

RECOMMENDED SOLDER PAD PATTERN IS SHOWN IN FIG. A & B.

B.

ALL MATING PINS TO BE .025/-.64 SQUARE ON TRUE CENTER OF GIVEN TERMINAL SPACING WITHIN .015/0.38 DIA.

C.

SUGGESTED MATING PIN LENGTH .210 ±.020/5.33±0.51.

③

HOUSING MATERIAL: FILLED P.P.S. COLOR: BLACK.
FLAME RETARDANT PER UL-94V-0.
COMPATIBLE WITH INFRA-RED SOLDERING.
THIS PART WILL WITHSTAND EXPOSURES TO 260°C
PEAK TEMPERATURE FOR 20 SECONDS IN WAVE SOLDER,
INFRA-RED OR VAPOR PHASE SOLDER PROCESS.

④

PRESTAMPED POST PLATED TERMINALS.

⑤

FCI, FCI FINAL PART NUMBER AND DATE CODE
TO BE MARKED ON TUBE LABEL.

6.

STANDARD PACKAGING PER BUS-14-097.

⑦

TAPE AND REEL PACKAGING PER GES-14-334.

⑧

TAPE AND REEL PACKAGING FOR 24mm WIDTH AND LESS WILL HAVE ONE
PILOT HOLE ON TAPE, ABOVE 24mm WIDTH TAPE WILL HAVE PILOT HOLES
ON BOTH SIDES.

⑨

VACUUM CAP MATERIAL: LCP
FLAME RETARDANT PER UL 94V-0.
VACUUM CAP P/N 71738-001
COLOR: BLACK

⑩

ADD SUFFIX "P" TO PART DASH NUMBER FOR TAPE & REEL PACKAGING.
EXAMPLE: 68617-XXXP

⑪

TAPE & REEL PACKAGING 44mm WIDE TAPE WITH 20mm POCKET PITCH.

⑫

TAPE & REEL PACKAGING 56mm WIDE TAPE WITH 20mm POCKET PITCH

⑬

ADD LF SUFFIX AT THE END OF PART NUMBER FOR LEAD FREE OPTION.

14.

THIS PRODUCT MEETS EUROPEAN UNION DIRECTIVES AND OTHER COUNTRY
REGULATION AS DESCRIBED IN GS-22-008.

⑮

PLATING OPTIONS:
MAY BE EITHER GOLD OR GXT PLATED AT MANUFACTURER'S OPTION.

mat'l. code

SEE NOTES 1, 3 & 8

surface

ISO 1302 ✓

tolerance

ISO 406

ISO 1101

projection

product family

DUBOX

title

SMT SINGLE ROW
LATCHED VCC ASSEMBLY

dwg no

68617

sheet2 of 5

size

A3

type

Product Customer Drawing

revision

sheet

index

form: A3

1

2

3

4

5

6

FCI

FCIconnect.com

Copyright FCI

PRODUCT NO NOTE 13	PLATING CONTACT AREA NOTE 15	PLATING SOLDER TAIL	MATERIAL REF.
68617-2XX	15u"/.38u Au OR GXT MIN OVER 50u"/1.27u Ni MIN	100u"/160u" SN 2.54u"/4.06u"	NOTE 3 & 4
68617-3XX	30u"/.76u Au OR GXT MIN OVER 50u"/1.27u Ni MIN	100u"/160u" SN 2.54u"/4.06u"	NOTE 3 & 4
68617-6XX	30u"/.76u Au OR GXT MIN OVER 50u"/1.27u Ni MIN	100u"/160u" SN 2.54u"/4.06u"	NOTE 3 & 4
68617-8XX	30u"/.76u Au MIN OVER 50u"/1.27u Ni MIN	100u"/160u" SN 2.54u"/4.06u"	NOTE 3 & 4

OBSOLETE

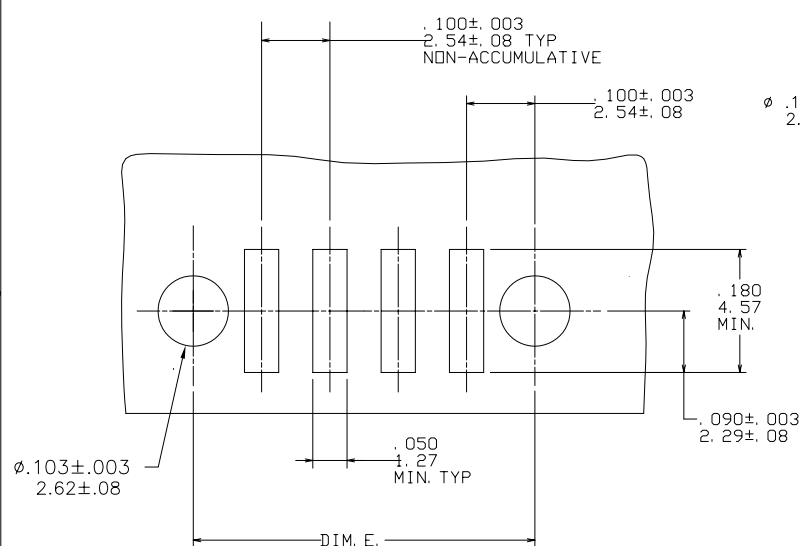


FIGURE A
TOP ENTRY
.025/.64 SQ PIN

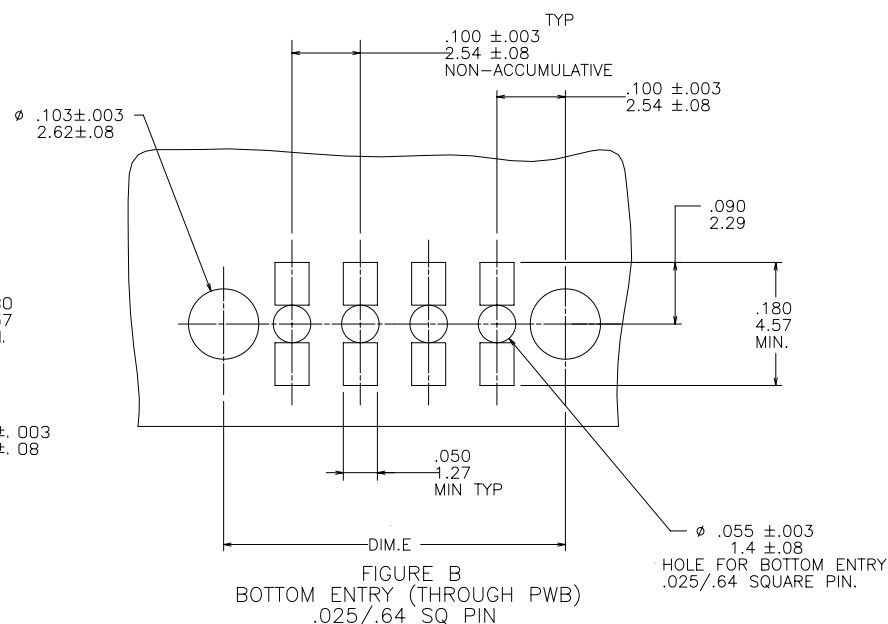




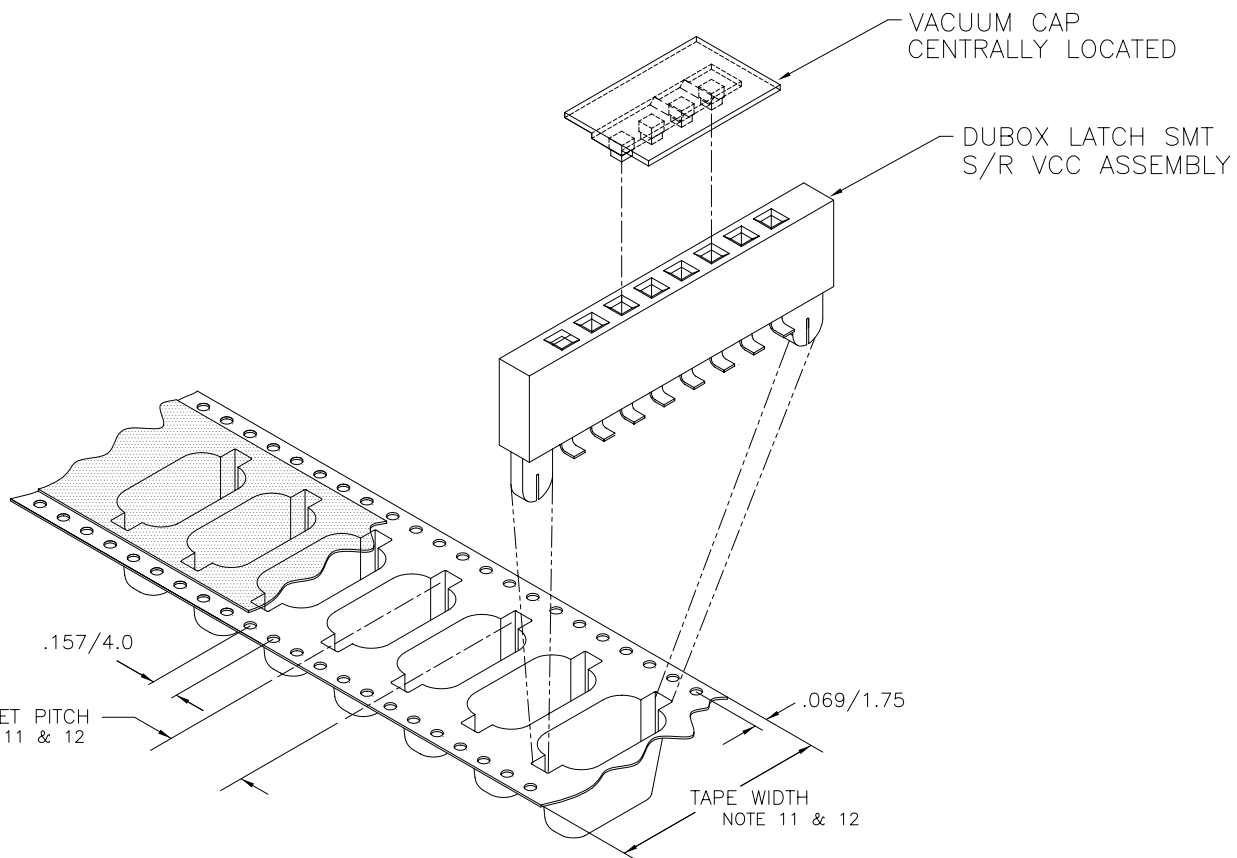
FIGURE B
BOTTOM ENTRY (THROUGH PWB)
.025/.64 SQ PIN

mat'l. code —				surface ISO 1302 ✓	tolerance ISO 406 ISO 1101	projection 	product family DUBOX				
ltr	ecn	no	dr	date	tolerances unless otherwise specified			title			
X					angles	linear	INCH/MM ↔	SMT SINGLE ROW			
						.XX ±.01/0.3		LATCHED VCC ASSEMBLY			
						.XXX ±.005/0.13					
					0'±2'		scale 1:1				
			dr	J. SHREINER	10/07/90			dwg no		sheet 3 of 5	size
		enr	M. HAHN	10/07/90	68617			A3			
		chr	M. HAHN	10/07/90							
		appd	M. HAHN	10/07/90							
sheet index	revision		sheet					type Product Customer Drawing			



FCIconnect.com

Copyright FCI



TAPE AND REEL PACKAGING ONLY

mat'l. code				surface	tolerance	projection	product family
-				ISO 1302	ISO 406 ISO 1101		DUBOX
ltr	ecr	no	dr	date	tolerances unless otherwise specified	 INCH/MM scale 1:1 	title
X					angles linear		SMT SINGLE ROW
					0°±2'		LATCHED VCC ASSEMBLY
							dwg no
				dr	J. SHREINER	10/07/90	sheet 4 of 5 size
				enr	M. HAHN	10/07/90	68617 A3
				chr	M. HAHN	10/07/90	
				appd	M. HAHN	10/07/90	type Product Customer Drawing
sheet index	revision sheet						

form: A3



FCIconnect.com

Copyright FCI

PRODUCT NO NOTE 13	NO. OF POS.	DIM C	DIM D	DIM E	TAPE & REEL PACKAGING	LF OPTION
68617-Y02	1 X 2	.100/2.54	.417/10.59	.300/7.62	NO	NOTE 13
-Y03	1 X 3	.200/5.08	.517/13.13	.400/10.16	NO	
-Y04	1 X 4	.300/7.62	.617/15.67	.500/12.70	NO	
-Y05	1 X 5	.400/10.16	.717/18.21	.600/15.24	NO	
-Y06	1 X 6	.500/12.70	.817/20.75	.700/17.78	NO	
-Y07	1 X 7	.600/15.24	.917/23.29	.800/20.32	NO	
-Y08	1 X 8	.700/17.78	1.017/25.83	.900/22.86	NO	
-Y09	1 X 9	.800/20.32	1.117/28.37	1.000/25.40	NO	
-Y10	1 X 10	.900/22.86	1.217/30.91	1.100/27.94	NO	
-Y11	1 X 11	1.000/25.40	1.317/33.45	1.200/30.48	NO	
-Y12	1 X 12	1.100/27.94	1.417/35.99	1.300/33.02	NO	
-Y13	1 X 13	1.200/30.48	1.517/38.53	1.400/35.56	NO	
-Y14	1 X 14	1.300/33.02	1.617/41.07	1.500/38.10	NO	
-Y15	1 X 15	1.400/35.56	1.717/43.61	1.600/40.64	NO	
-Y16	1 X 16	1.500/38.10	1.817/46.15	1.700/43.18	NO	
-Y17	1 X 17	1.600/40.64	1.917/48.69	1.800/45.72	NO	
-Y18	1 X 18	1.700/43.18	2.017/51.23	1.900/48.26	NO	
-Y19	1 X 19	1.800/45.72	2.117/53.77	2.000/50.80	NO	
-Y20	1 X 20	1.900/48.26	2.217/56.31	2.100/53.34	NO	
-Y21	1 X 21	2.000/50.80	2.317/58.85	2.200/55.08	NO	
-Y22	1 X 22	2.100/53.34	2.417/61.39	2.300/58.42	NO	
-Y23	1 X 23	2.200/55.88	2.517/63.93	2.400/60.96	NO	
-Y24	1 X 24	2.300/58.42	2.617/66.47	2.500/63.50	NO	
-Y25	1 X 25	2.400/60.96	2.717/69.01	2.600/66.04	NO	
-Y26 THRU -Y50					NO	
-Y07P	1 X 7	.600/15.24	.917/23.29	.800/20.32	YES	
-Y08P	1 X 8	0.700/17.78	1.017/25.83	0.900/22.86	YES	
-Y09P	1 X 9	.800/20.32	1.117/28.37	1.000/25.40	YES	
68617-Y12P	1 X 12	1.100/27.94	1.417/35.99	1.300/33.02	YES	

OBSOLETE
NOTE 10 & 11
NOTE 10 & 11

mat'l. code				surface ISO 1302 <input checked="" type="checkbox"/>		tolerance ISO 406 ISO 1101		projection 		product family DUBOX			
ltr	ecn	no	dr	date	tolerances unless otherwise specified						title		
X					angles	linear	.XX ±.01/0.3	INCH/MM		SMT SINGLE ROW			
					0'±2'		.XXX ±.005/0.13	scale 1:1		LATCHED VCC ASSEMBLY			
							.XXXX ±.0020/0.051			dwg no			
					dr	J. SHREINER	10/07/90			sheet 5 of 5 size			
					enr	M. HAHN	10/07/90			68617 A3			
					chr	M. HAHN	10/07/90			type Product Customer Drawing			
					appd	M. HAHN	10/07/90						
sheet index	revision sheet												

form: A3