

DESCRIPTION: COAXIAL - RIGHT ANGLE - MALE

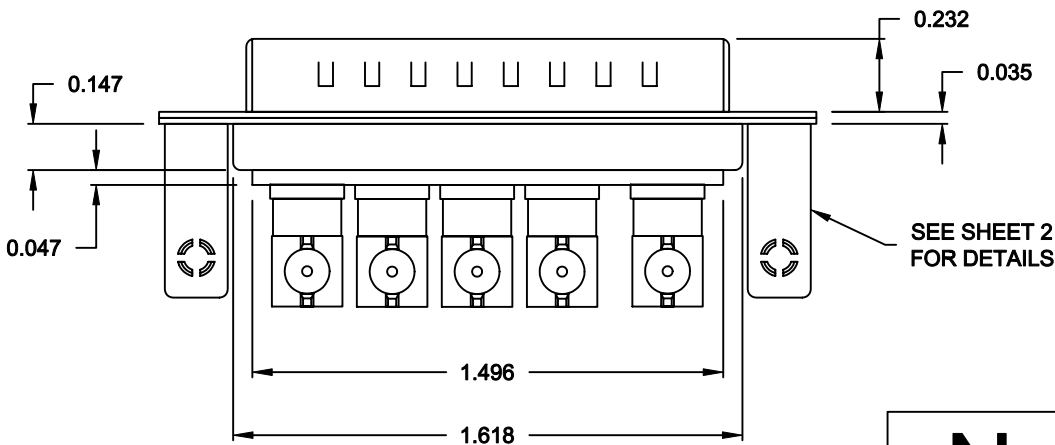
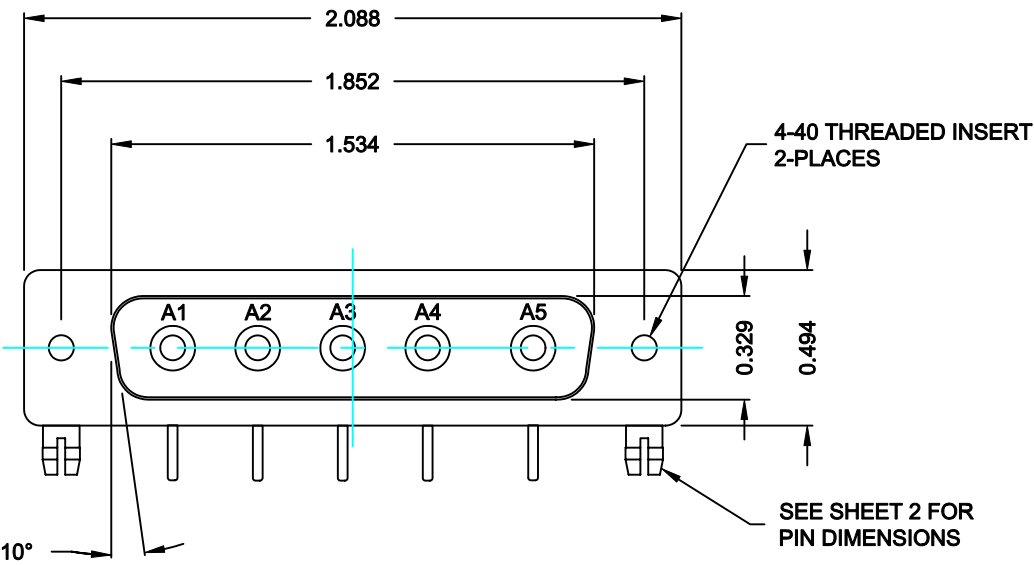
SPECIFICATIONS:

ELECTRICAL:  
INSULATOR RESISTANCE: 5,000 MegOHMS Min.  
DIELECTRIC WITHSTANDING: 1,000VAC r.m.s.  
OPERATING TEMPERATURE: -55° C ~ +125° C  
CONTACT RESISTANCE: 30 MilliOHMS Max.  
COAXIAL PINS: 75 OHM

MECHANICAL:  
CONTACT INSERTION FORCE: 4.5 Kg Max.  
CONTACT SEPARATOR FORCE: 0.3Kg Min.

MATERIALS:  
CONTACTS: BRASS  
INSULATOR: PBT UL94V-0 RATED,  
230°C PROCESS TEMP.  
STEEL


SHELL:  
FINISH: NICKEL  
SHELL: NICKEL



6855W5103L461

46 = 4-40 INSERTS /  
BOARD LOCKS

RoHS COMPLIANT

	THESE DRAWINGS AND SPECIFICATIONS ARE THE PROPERTY OF NorComp AND SHALL NOT BE REPRODUCED, COPIED OR USED AS THE BASIS FOR THE MANUFACTURE OF SALE OF APPARATUS WITHOUT WRITTEN PERMISSION.	DRAWN: <b>C. SMITH</b>		DATE: <b>10-11-06</b>	
		CHECKED: <b>X</b>		DATE: <b>X</b>	
<b>NorComp</b>	SCALE: <b>N.T.S.</b>		SHEET <b>1</b>		OF <b>2</b>
	DWG NO.		<b>6855W5103L461</b>		
		REV <b>0</b>			

