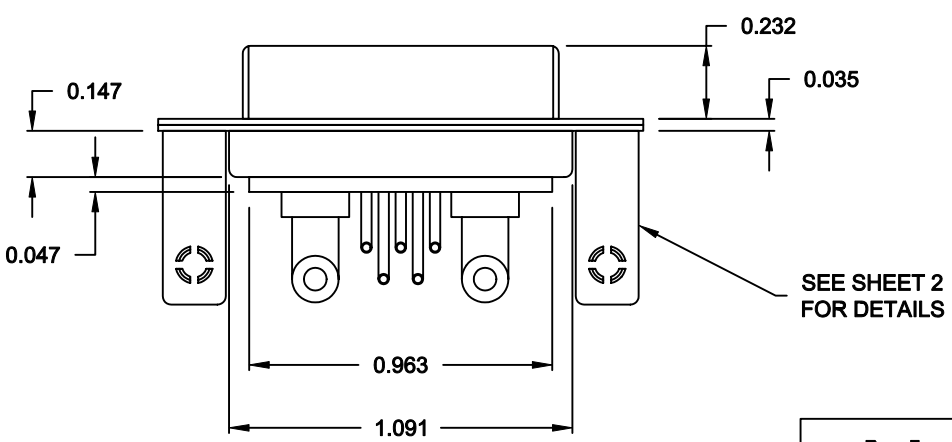
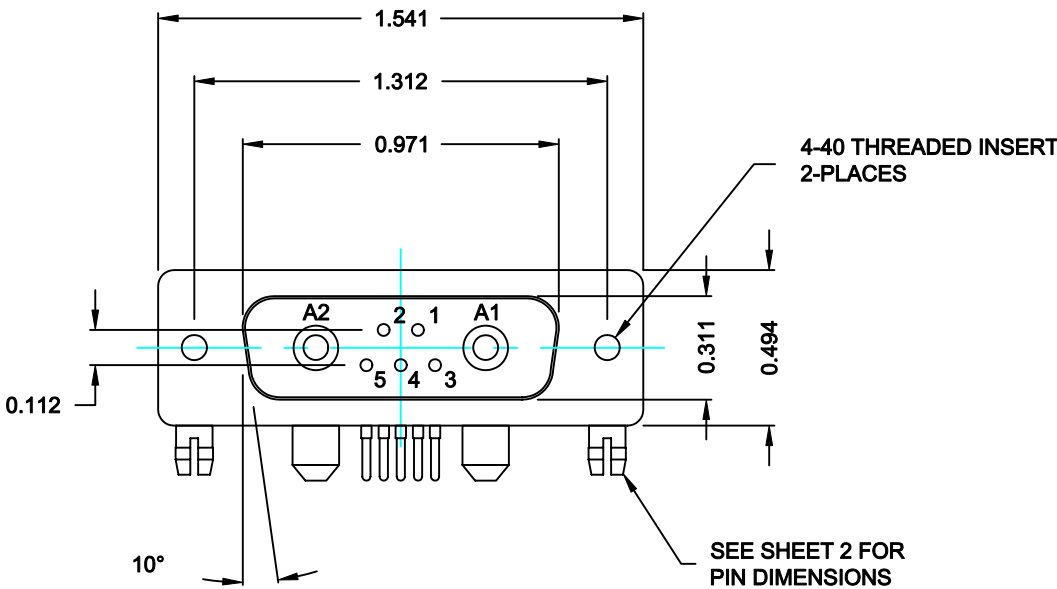


DESCRIPTION: POWER / SIGNAL - RIGHT ANGLE - FEMALE




SPECIFICATIONS:

ELECTRICAL:	
INSULATOR RESISTANCE:	5,000 MegOHMS Min.
DIELECTRIC WITHSTANDING:	1,000VAC r.m.s.
OPERATING TEMPERATURE:	-55° C ~ +125° C
CONTACT RESISTANCE:	30 MilliOHMS Max.
POWER PINS:	40 AMPS
SIGNAL PINS:	5 AMPS
MECHANICAL:	
CONTACT INSERTION FORCE:	4.5 Kg Max.
CONTACT SEPARATOR FORCE:	0.3Kg Min.
MATERIALS:	
CONTACTS:	BRASS
INSULATOR:	PBT UL94V-0 RATED, 230°C PROCESS TEMP.
SHELL:	STEEL
BOARD LOCK:	BRASS, NICKEL PLATED
CINCHNUT:	BRASS, NICKEL PLATED
BRACKET:	STEEL, NICKEL PLATED
FINISH:	
SHELL:	NICKEL

6847W2203L461

46 = 4-40 INSERTS /
BOARD LOCKS

RoHS COMPLIANT


	THESE DRAWINGS AND SPECIFICATIONS ARE THE PROPERTY OF NorComp AND SHALL NOT BE REPRODUCED, COPIED OR USED AS THE BASIS FOR THE MANUFACTURE OF SALE OF APPARATUS WITHOUT WRITTEN PERMISSION.	DRAWN: C. SMITH		DATE: 09-06-06	
		CHECKED: X		DATE: X	
NorComp	SCALE: N.T.S.		SHEET 1		OF 2
	DWG NO.		6847W2203L461		
		REV 2			

DESCRIPTION: 684 SERIES CONTACTS

Technical drawing of the rear view of a mechanical part. The drawing shows a central vertical axis. To the left of the axis, there is a horizontal dimension line with arrows at both ends, labeled 0.175. To the right of the axis, there are two horizontal dimension lines with arrows at both ends. The first one is labeled 0.409 and the second one is labeled 0.509. On the right side, there are two vertical lines representing holes. The top hole is labeled with a diameter symbol and the value 0.033. The bottom hole is labeled with a diameter symbol and the value 0.026. The drawing also shows a central vertical feature, possibly a shaft or a hole, and some internal features on the left side.

Technical drawing of a mechanical part. The drawing shows a side view of a component with a vertical flange on the left and a horizontal pipe-like section on the right. The horizontal section has a diameter of $\varnothing 0.148$. The vertical flange has a thickness of 0.175 . The horizontal section has a length of 0.562 from the centerline of the flange to the end of the section.

Diagram illustrating the mounting hardware for the device. The hardware includes a 4-40 INSERT, a BOARDLOCK FOR Ø 0.121 HOLE, and a MOUNTING HARDWARE base. The dimensions shown are 0.156 (height of the base), 0.459 (width of the base), and 0.121 (hole diameter).

	THESE DRAWINGS AND SPECIFICATIONS ARE THE PROPERTY OF NorComp AND SHALL NOT BE REPRODUCED, COPIED OR USED AS THE BASIS FOR THE MANUFACTURE OF SALE OF APPARATUS WITHOUT WRITTEN PERMISSION.	DRAWN:		DATE:	
		C. SMITH		09-06-06	
		CHECKED: X		DATE: X	
<h1>NorComp</h1>		SCALE:	SHEET		OF
		N.T.S.	2		2
		DWG NO. 6847W2203L461			