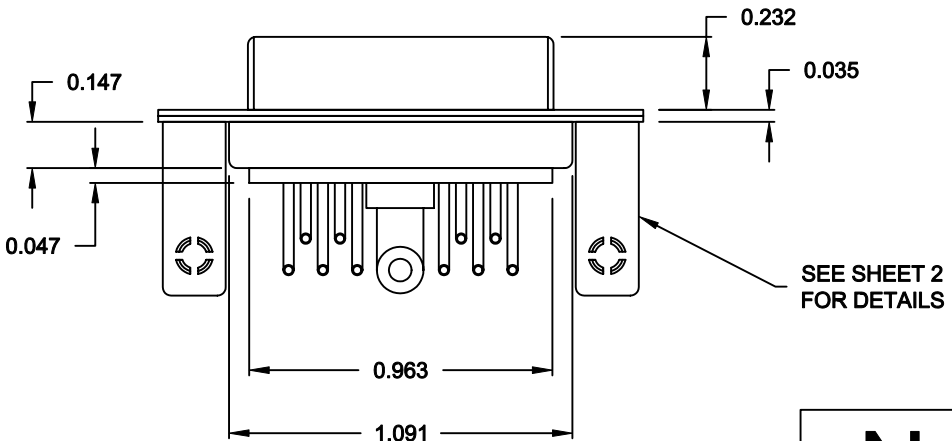
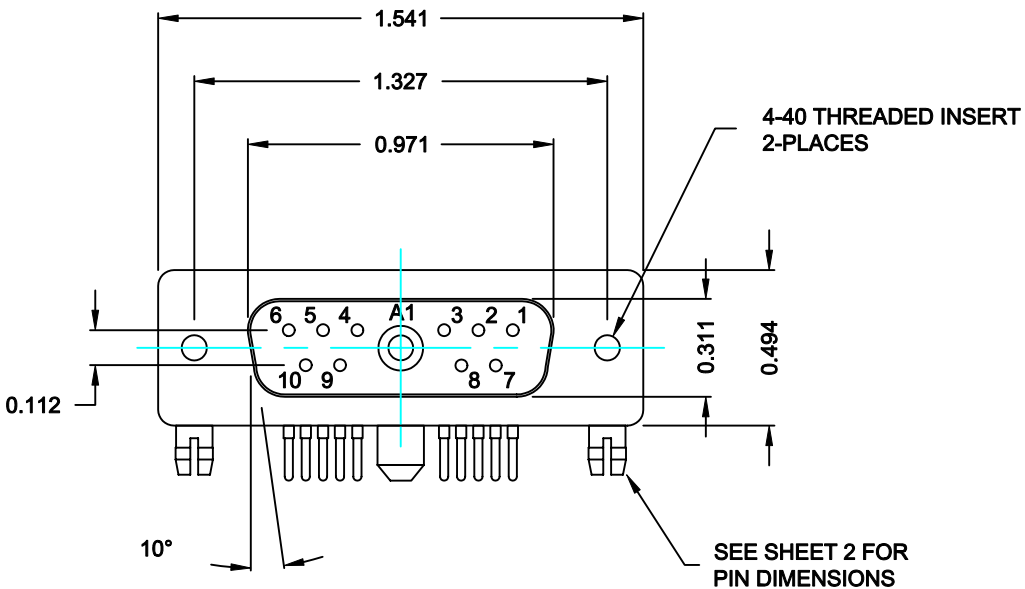


DESCRIPTION: POWER / SIGNAL - RIGHT ANGLE - FEMALE





SPECIFICATIONS:

<b>ELECTRICAL:</b>	
INSULATOR RESISTANCE:	5,000 MegOHMS Min.
DIELECTRIC WITHSTANDING:	1,000VAC r.m.s.
OPERATING TEMPERATURE:	-55° C ~ +125° C
CONTACT RESISTANCE:	30 MilliOHMS Max.
POWER PINS:	40 AMPS
SIGNAL PINS:	5 AMPS
<b>MECHANICAL:</b>	
CONTACT INSERTION FORCE:	4.5 Kg Max.
CONTACT SEPARATOR FORCE:	0.3Kg Min.
<b>MATERIALS:</b>	
CONTACTS:	BRASS
INSULATOR:	PBT UL94V-0 RATED, 230°C PROCESS TEMP.
SHELL:	STEEL
BOARD LOCK:	BRASS, NICKEL PLATED
CINCHNUT:	BRASS, NICKEL PLATED
BRACKET:	STEEL, NICKEL PLATED
<b>FINISH:</b>	
SHELL:	NICKEL

68411W1203L461

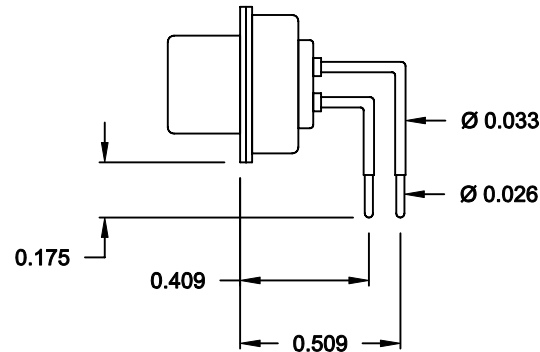
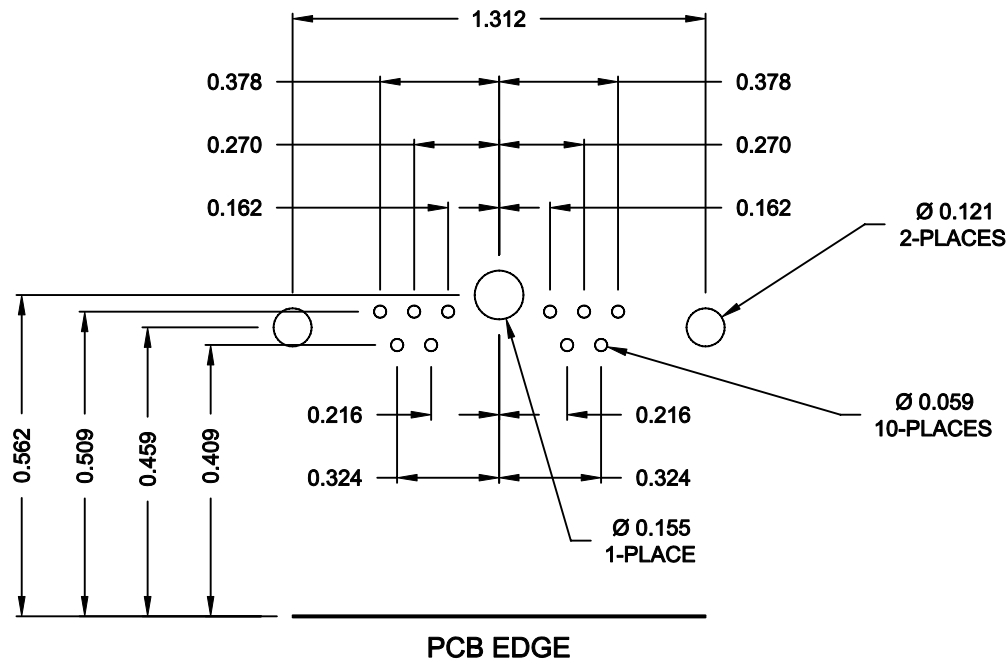
46 = 4-40 INSERTS /  
BOARD LOCKS

RoHS COMPLIANT

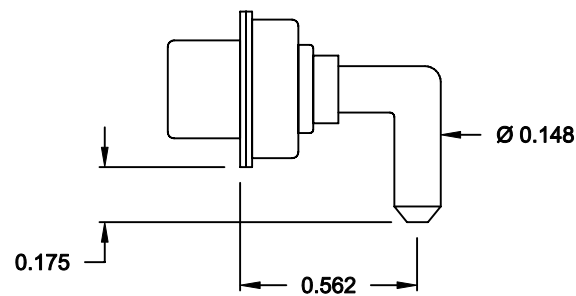
	THESE DRAWINGS AND SPECIFICATIONS ARE THE PROPERTY OF NorComp AND SHALL NOT BE REPRODUCED, COPIED OR USED AS THE BASIS FOR THE MANUFACTURE OF SALE OF APPARATUS WITHOUT WRITTEN PERMISSION.	DRAWN: <b>C. SMITH</b>		DATE: <b>10-06-06</b>		
		CHECKED: <b>X</b>		DATE: <b>X</b>		
		SCALE: <b>N.T.S.</b>	SHEET <b>1</b>		OF <b>2</b>	REV <b>1</b>
		DWG NO. <b>68411W1203L461</b>				

DESCRIPTION: 684 SERIES CONTACTS

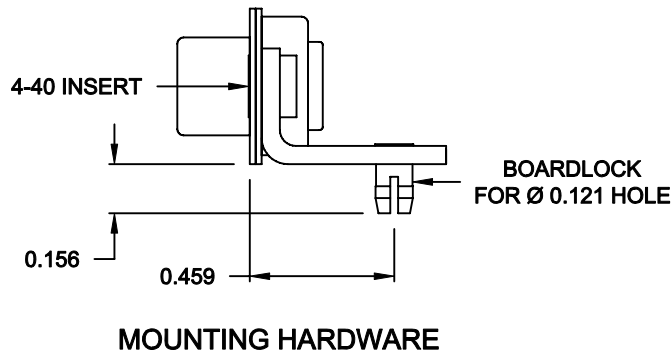
NOTE:  
SIGNAL AND POWER CONTACTS  
COME PRE-LOADED INTO INSULATORS




SIGNAL CONTACTS



40 AMP POWER CONTACT



RoHS COMPLIANT

	THESE DRAWINGS AND SPECIFICATIONS ARE THE PROPERTY OF NorComp AND SHALL NOT BE REPRODUCED, COPIED OR USED AS THE BASIS FOR THE MANUFACTURE OF SALE OF APPARATUS WITHOUT WRITTEN PERMISSION.	DRAWN: <b>C. SMITH</b>		DATE: <b>10-06-06</b>	
		CHECKED: <b>X</b>		DATE: <b>X</b>	
<b>NorComp</b>		SCALE: <b>N.T.S.</b>	SHEET <b>2</b> OF <b>2</b>		REV <b>1</b>
		DWG NO. <b>68411W1203L461</b>			