

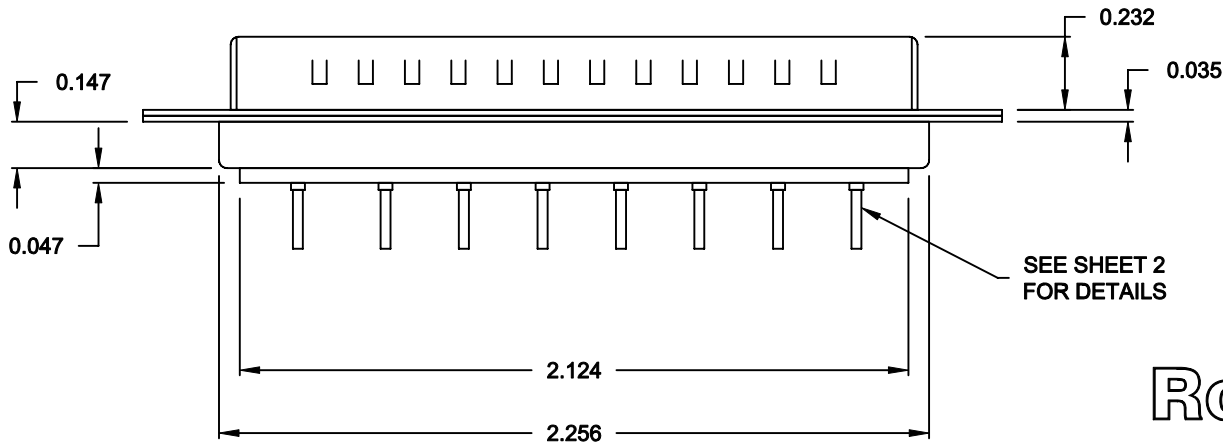
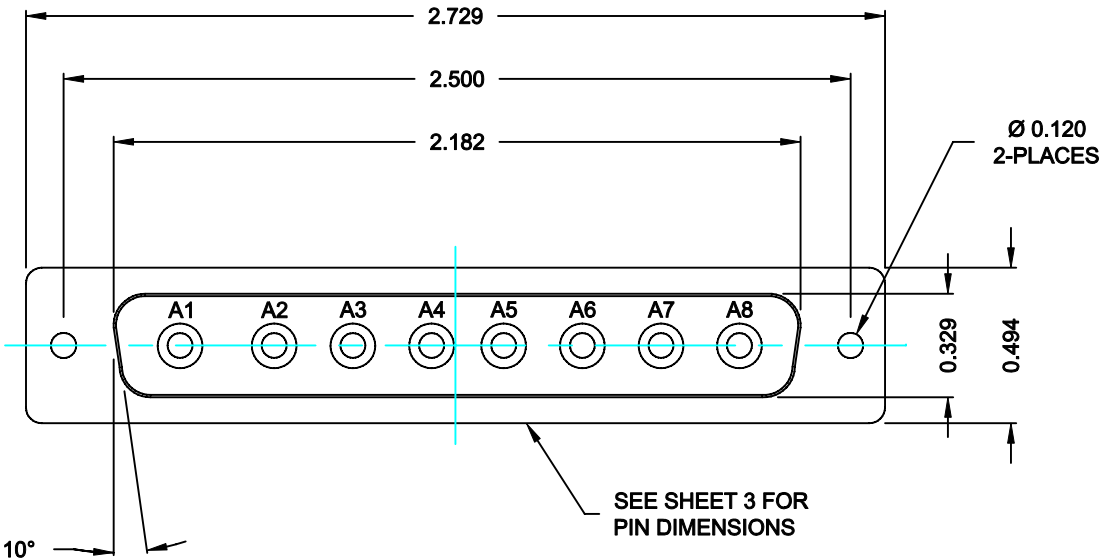
DESCRIPTION: COAXIAL - VERTICAL BOARD - MALE

SPECIFICATIONS:

ELECTRICAL:
INSULATOR RESISTANCE: 5,000 MegOHMS Min.
DIELECTRIC WITHSTANDING: 1,000VAC r.m.s.
OPERATING TEMPERATURE: -55° C ~ +125° C
CONTACT RESISTANCE: 30 MilliOHMS Max.
COAXIAL PINS: 75 OHM

MECHANICAL:
CONTACT INSERTION FORCE: 4.5 Kg Max.
CONTACT SEPARATOR FORCE: 0.3Kg Min.


MATERIALS:
CONTACTS: BRASS
INSULATOR: PBT UL94V-0 RATED,
230°C PROCESS TEMP.
STEEL
SHELL:
FINISH: NICKEL
SHELL: NICKEL



6838W8103L001

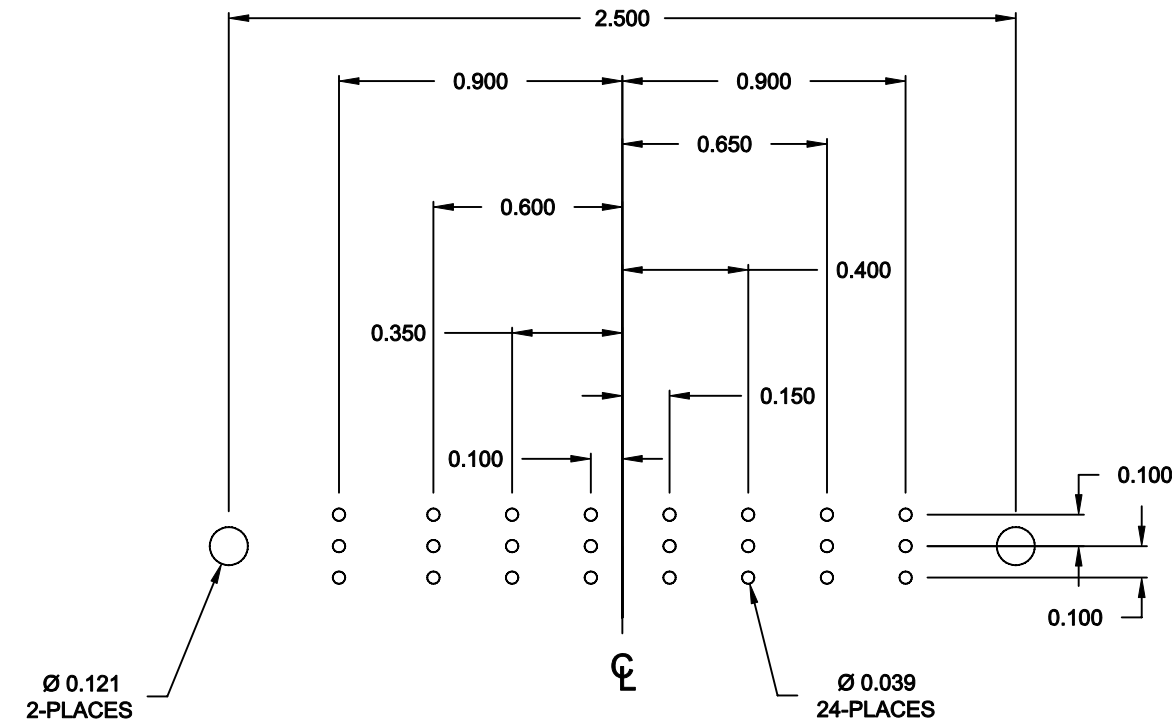
00 = 75 OHM COAXIAL

RoHS COMPLIANT

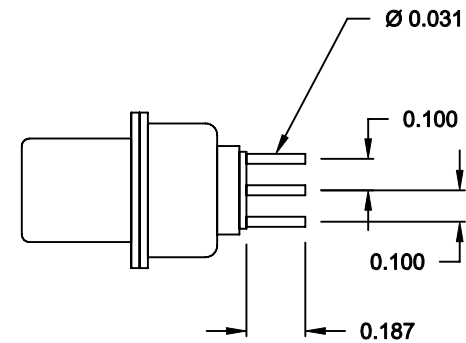
| | | | | | | |
|--|---|--|-----------------|-------|----------------|--|
|  NorComp | THESE DRAWINGS AND SPECIFICATIONS ARE THE PROPERTY OF NorComp AND SHALL NOT BE REPRODUCED, COPIED OR USED AS THE BASIS FOR THE MANUFACTURE OF SALE OF APPARATUS WITHOUT WRITTEN PERMISSION. | | DRAWN: C. SMITH | | DATE: 09-22-06 | |
| | | | CHECKED: X | | DATE: X | |
| | | | SCALE: N.T.S. | | SHEET 1 OF 2 | |
| | | | DWG NO. | | 6838W8103L001 | |
| | | | | REV 0 | | |

DESCRIPTION: 683 SERIES CONTACTS

NOTE:
COAXIAL CONTACTS COME
PRE-LOADED INTO INSULATORS




RECOMMENDED PCB LAYOUT



75 OHM COAXIAL CONTACT

RoHS COMPLIANT

| | | | | | | |
|--|---|--|-----------------------|---------|----------------|-------|
|  | THESE DRAWINGS AND SPECIFICATIONS ARE THE PROPERTY OF NorComp AND SHALL NOT BE REPRODUCED, COPIED OR USED AS THE BASIS FOR THE MANUFACTURE OF SALE OF APPARATUS WITHOUT WRITTEN PERMISSION. | | DRAWN: C. SMITH | | DATE: 09-22-06 | |
| | | | CHECKED: X | | DATE: X | |
| | | | SCALE: N.T.S. | SHEET 2 | OF 2 | REV 0 |
| | | | DWG NO. 6838W8103L001 | | | |

NorComp