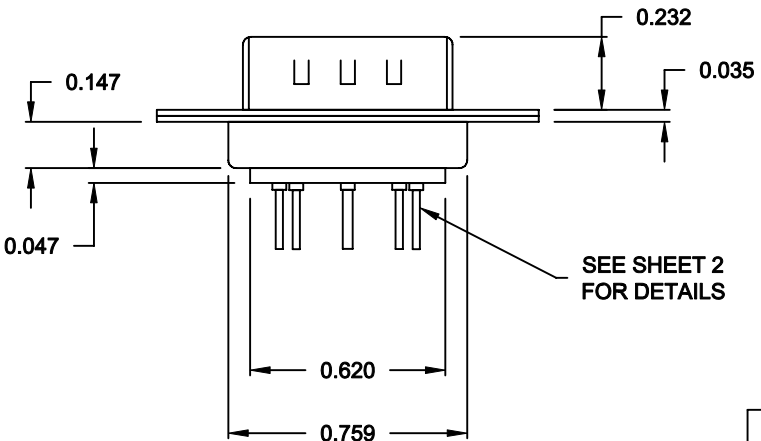
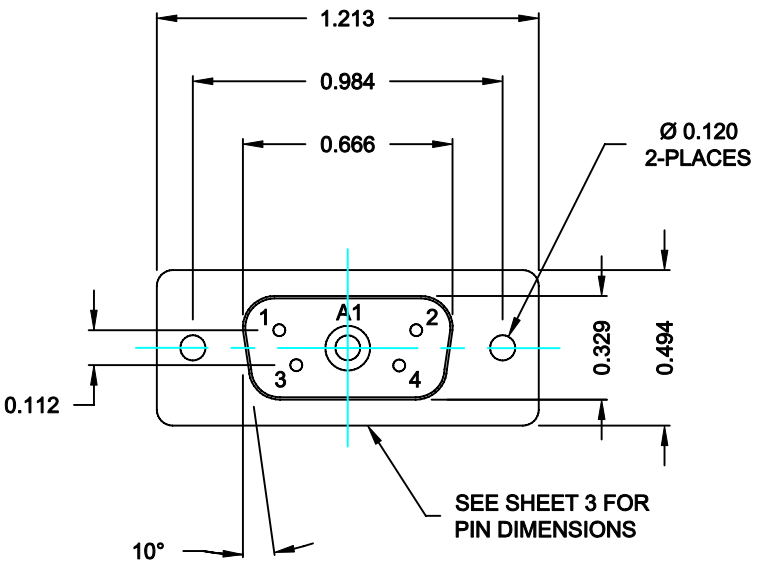


DESCRIPTION: COAXIAL / SIGNAL - VERTICAL BOARD - MALE



SPECIFICATIONS:


**ELECTRICAL:**  
INSULATOR RESISTANCE: 5,000 MegOHMS Min.  
DIELECTRIC WITHSTANDING: 1,000VAC r.m.s.  
OPERATING TEMPERATURE: -55° C ~ +125° C  
CONTACT RESISTANCE: 30 MilliOHMS Max.  
COAXIAL PINS: 75 OHM  
SIGNAL PINS: 3 AMPS

**MECHANICAL:**  
CONTACT INSERTION FORCE: 4.5 Kg Max.  
CONTACT SEPARATOR FORCE: 0.3Kg Min.

**MATERIALS:**  
CONTACTS: BRASS  
INSULATOR: PBT UL94V-0 RATED,  
230°C PROCESS TEMP.  
STEEL  
  
SHELL:  
  
FINISH:  
SHELL: NICKEL

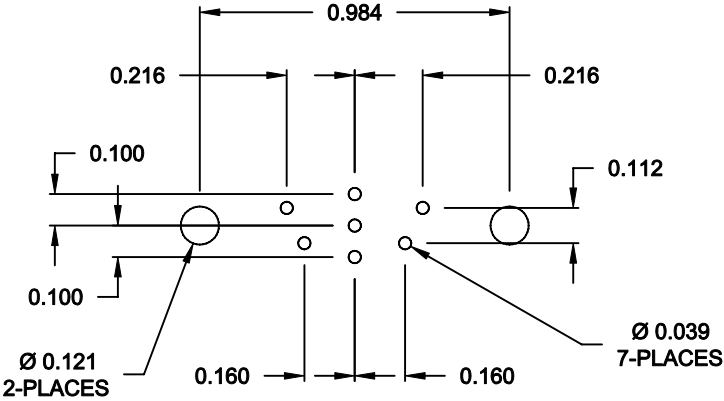
6835W1103L001  
00 = 75 OHM COAXIAL

RoHS COMPLIANT

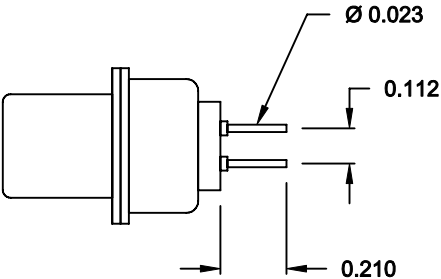
	THESE DRAWINGS AND SPECIFICATIONS ARE THE PROPERTY OF NorComp AND SHALL NOT BE REPRODUCED, COPIED OR USED AS THE BASIS FOR THE MANUFACTURE OF SALE OF APPARATUS WITHOUT WRITTEN PERMISSION.	DRAWN: C. SMITH		DATE: 09-21-06	
		CHECKED: X		DATE: X	
<h1>NorComp</h1>	SCALE: N.T.S.		SHEET 1 OF 2		REV 0
	DWG NO. 6835W1103L001				

DESCRIPTION: 683 SERIES CONTACTS

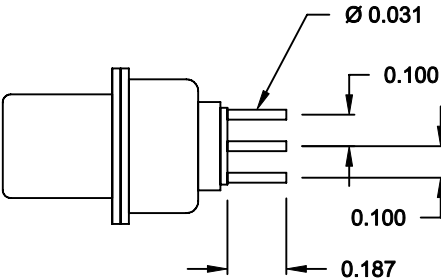
NOTE:  
SIGNAL AND COAXIAL CONTACTS  
COME PRE-LOADED INTO INSULATORS



RECOMMENDED PCB LAYOUT




SIGNAL CONTACTS



75 OHM COAXIAL CONTACT

RoHS COMPLIANT

	THESE DRAWINGS AND SPECIFICATIONS ARE THE PROPERTY OF NorComp AND SHALL NOT BE REPRODUCED, COPIED OR USED AS THE BASIS FOR THE MANUFACTURE OF SALE OF APPARATUS WITHOUT WRITTEN PERMISSION.	DRAWN: <b>C. SMITH</b>		DATE: <b>09-21-06</b>	
		CHECKED: <b>X</b>		DATE: <b>X</b>	
<b>NorComp</b>	SCALE: <b>N.T.S.</b>		SHEET <b>2</b>		OF <b>2</b>
	DWG NO. <b>6835W1103L001</b>		REV <b>0</b>		