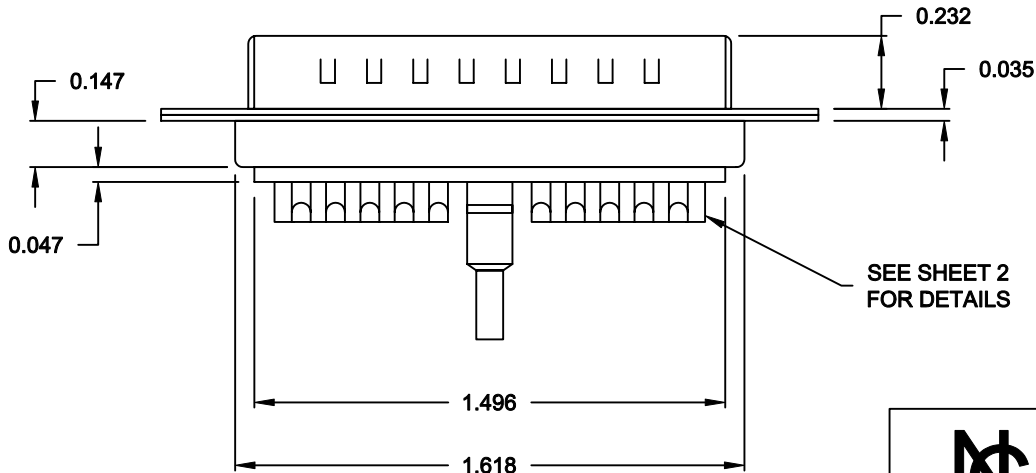
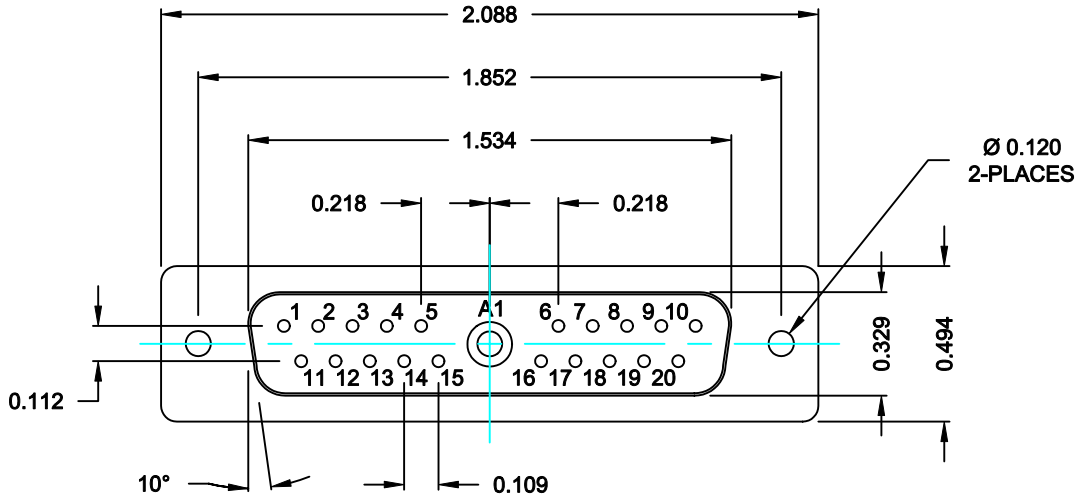


DESCRIPTION: COAXIAL / SIGNAL - SOLDER CUP - MALE



**SPECIFICATIONS:**

**ELECTRICAL:**

INSULATOR RESISTANCE:	5,000 MegOHMS Min.
DIELECTRIC WITHSTANDING:	1,000VAC r.m.s.
OPERATING TEMPERATURE:	-55° C ~ +125° C
CONTACT RESISTANCE:	30 MillioHMS Max.
COAXIAL PINS:	75 OHM
SIGNAL PINS:	3 AMPS

**MECHANICAL:**

**CONTACT INSERTION FORCE:** 4.5 Kg Max.  
**CONTACT SEPARATOR FORCE:** 0.3Kg Min.

**MATERIALS:**

CONTACTS:	BRASS
INSULATOR:	PBT UL94V-0 RATED, 230°C PROCESS TEMP.
SHELL:	STEEL

**SHELL:**

## FINISH:

SHELL: NICKEL

68221W1103L001

00 = 75 OHM COAXIAL

# RoHS COMPLIANT



THESE DRAWINGS AND SPECIFICATIONS  
ARE THE PROPERTY OF NorComp AND  
SHALL NOT BE REPRODUCED, COPIED  
OR USED AS THE BASIS FOR THE  
MANUFACTURE OF SALE OF APPARATUS  
WITHOUT WRITTEN PERMISSION.

DRAWN:	C. SMITH
--------	----------

DATE:	09-21-06
-------	----------

CHECKED:  
X

DATE:	X
-------	---

SCALE:  
N.T.S.

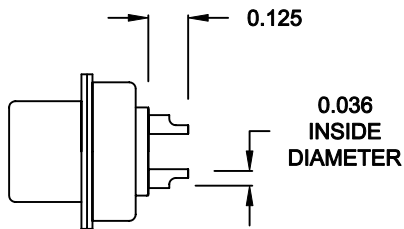
SHEET	OF
1	2

REV  
1

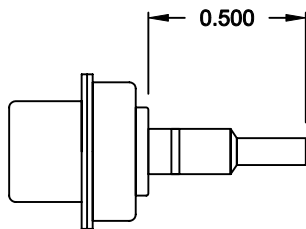
DWG NO. 68221W1103L001

# NorComp

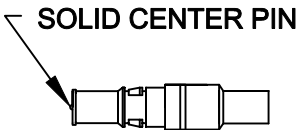
NOTE:  
SIGNAL CONTACTS COME PRE-LOADED INTO INSULATORS.  
COAXIAL CONTACTS SUPPLIED - NOT PRE-LOADED.



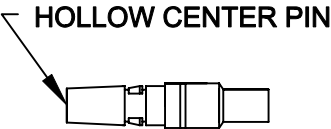
SIGNAL CONTACTS  
ACCEPTS UP TO 20 AWG WIRE



COAXIAL CONTACT  
ACCEPTS 75 OHM COAX, RG179/U




FEMALE COAXIAL CONTACT



MALE COAXIAL CONTACT

RoHS COMPLIANT

	THESE DRAWINGS AND SPECIFICATIONS ARE THE PROPERTY OF NorComp AND SHALL NOT BE REPRODUCED, COPIED OR USED AS THE BASIS FOR THE MANUFACTURE OF SALE OF APPARATUS WITHOUT WRITTEN PERMISSION.	DRAWN: <b>C. SMITH</b>		DATE: <b>09-21-06</b>	
		CHECKED: <b>X</b>		DATE: <b>X</b>	
<b>NorComp</b>		SCALE: <b>N.T.S.</b>	SHEET <b>2</b> OF <b>2</b>		REV <b>1</b>
		DWG NO. <b>68221W1103L001</b>			