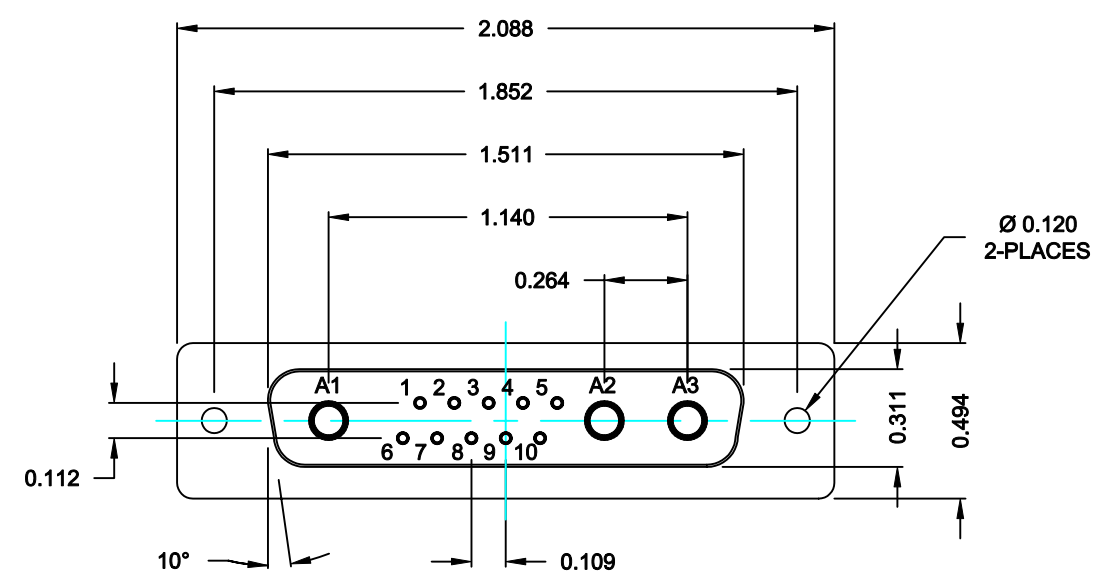


DESCRIPTION: COAXIAL / SIGNAL - SOLDER CUP - FEMALE



SPECIFICATIONS:

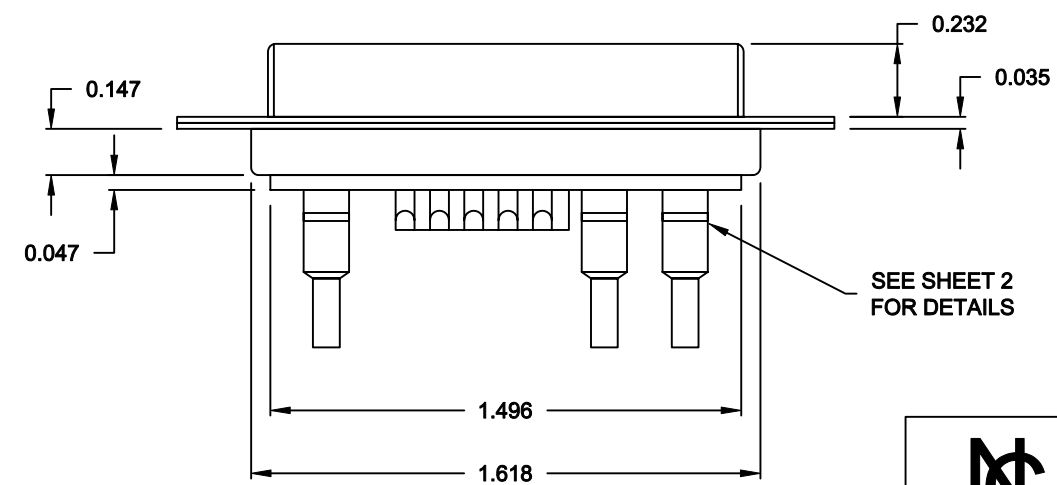
ELECTRICAL:
INSULATOR RESISTANCE: 5,000 MegOHMS Min.
DIELECTRIC WITHSTANDING: 1,000VAC r.m.s.
OPERATING TEMPERATURE: -55° C ~ +125° C
CONTACT RESISTANCE: 30 MilliOHMS Max.
COAXIAL PINS: 75 OHM
SIGNAL PINS: 3 AMPS

MECHANICAL:
CONTACT INSERTION FORCE: 4.5 Kg Max.
CONTACT SEPARATOR FORCE: 0.3Kg Min.

MATERIALS:
CONTACTS: BRASS
INSULATOR: PBT UL94V-0 RATED,
230°C PROCESS TEMP.
STEEL

SHELL:


FINISH:
SHELL: NICKEL



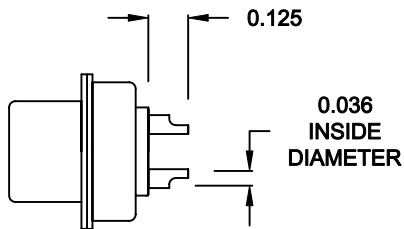
68213W3203L001

00 = 75 OHM COAXIAL

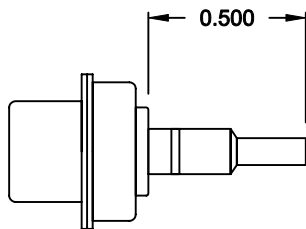
RoHS COMPLIANT

	THESE DRAWINGS AND SPECIFICATIONS ARE THE PROPERTY OF NorComp AND SHALL NOT BE REPRODUCED, COPIED OR USED AS THE BASIS FOR THE MANUFACTURE OF SALE OF APPARATUS WITHOUT WRITTEN PERMISSION.	DRAWN: C. SMITH		DATE: 09-21-06	
		CHECKED:		DATE:	
NorComp		SCALE: N.T.S.	SHEET 1 OF 2		REV 2
		DWG NO. 68213W3203L001			

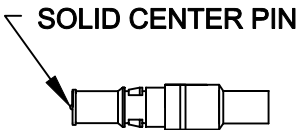
NOTE:
SIGNAL CONTACTS COME PRE-LOADED INTO INSULATORS.
COAXIAL CONTACTS SUPPLIED - NOT PRE-LOADED.



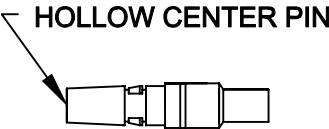
SIGNAL CONTACTS
ACCEPTS UP TO 20 AWG WIRE



COAXIAL CONTACT
ACCEPTS 75 OHM COAX, RG179/U




FEMALE COAXIAL CONTACT



MALE COAXIAL CONTACT

RoHS COMPLIANT

	THESE DRAWINGS AND SPECIFICATIONS ARE THE PROPERTY OF NorComp AND SHALL NOT BE REPRODUCED, COPIED OR USED AS THE BASIS FOR THE MANUFACTURE OF SALE OF APPARATUS WITHOUT WRITTEN PERMISSION.	DRAWN: C. SMITH		DATE: 09-21-06	
		CHECKED:		DATE:	
NorComp		SCALE: N.T.S.	SHEET 2 OF 2		REV 2
		DWG NO. 68213W3203L001			