

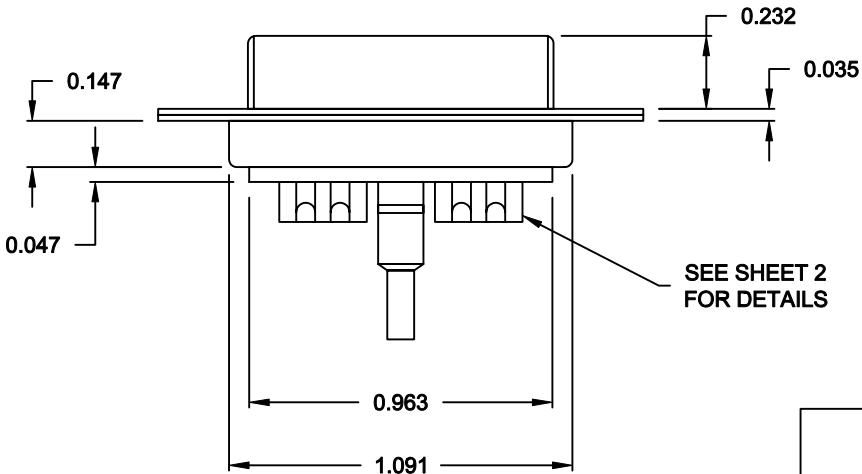
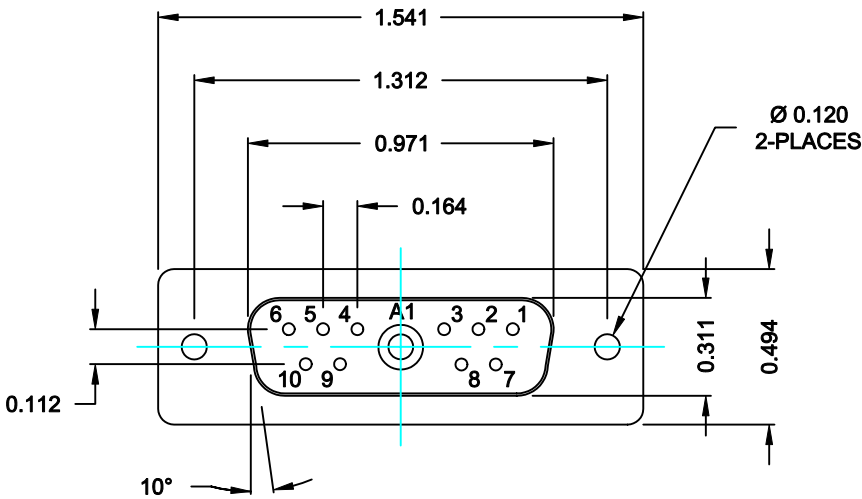
DESCRIPTION: COAXIAL / SIGNAL - SOLDER CUP - FEMALE

SPECIFICATIONS:

**ELECTRICAL:**  
INSULATOR RESISTANCE: 5,000 MegOHMS Min.  
DIELECTRIC WITHSTANDING: 1,000VAC r.m.s.  
OPERATING TEMPERATURE: -55° C ~ +125° C  
CONTACT RESISTANCE: 30 MilliOHMS Max.  
COAXIAL PINS: 75 OHM  
SIGNAL PINS: 3 AMPS

**MECHANICAL:**  
CONTACT INSERTION FORCE: 4.5 Kg Max.  
CONTACT SEPARATOR FORCE: 0.3Kg Min.


**MATERIALS:**  
CONTACTS: BRASS  
INSULATOR: PBT UL94V-0 RATED,  
230°C PROCESS TEMP.  
STEEL  
  
SHELL:  
  
FINISH:  
SHELL: NICKEL



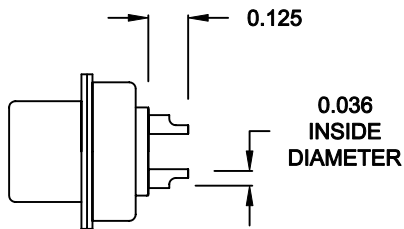
68211W1203L001

00 = 75 OHM COAXIAL

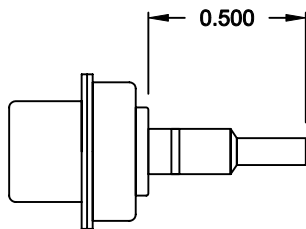
RoHS COMPLIANT

	THESE DRAWINGS AND SPECIFICATIONS ARE THE PROPERTY OF NorComp AND SHALL NOT BE REPRODUCED, COPIED OR USED AS THE BASIS FOR THE MANUFACTURE OF SALE OF APPARATUS WITHOUT WRITTEN PERMISSION.	DRAWN: <b>C. SMITH</b>		DATE: <b>09-21-06</b>		
		CHECKED: <b>X</b>		DATE: <b>X</b>		
		SCALE: <b>N.T.S.</b>		SHEET <b>1</b> OF <b>2</b>		REV <b>1</b>
<b>NorComp</b>		DWG NO. <b>68211W1203L001</b>				

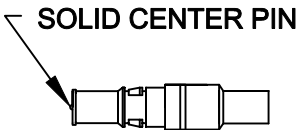
NOTE:  
SIGNAL CONTACTS COME PRE-LOADED INTO INSULATORS.  
COAXIAL CONTACTS SUPPLIED - NOT PRE-LOADED.



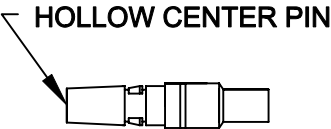
SIGNAL CONTACTS  
ACCEPTS UP TO 20 AWG WIRE



COAXIAL CONTACT  
ACCEPTS 75 OHM COAX, RG179/U




FEMALE COAXIAL CONTACT



MALE COAXIAL CONTACT

RoHS COMPLIANT

	THESE DRAWINGS AND SPECIFICATIONS ARE THE PROPERTY OF NorComp AND SHALL NOT BE REPRODUCED, COPIED OR USED AS THE BASIS FOR THE MANUFACTURE OF SALE OF APPARATUS WITHOUT WRITTEN PERMISSION.	DRAWN: <b>C. SMITH</b>		DATE: <b>09-21-06</b>	
		CHECKED: <b>X</b>		DATE: <b>X</b>	
<b>NorComp</b>		SCALE: <b>N.T.S.</b>	SHEET <b>2</b> OF <b>2</b>		REV <b>1</b>
		DWG NO. <b>68211W1203L001</b>			