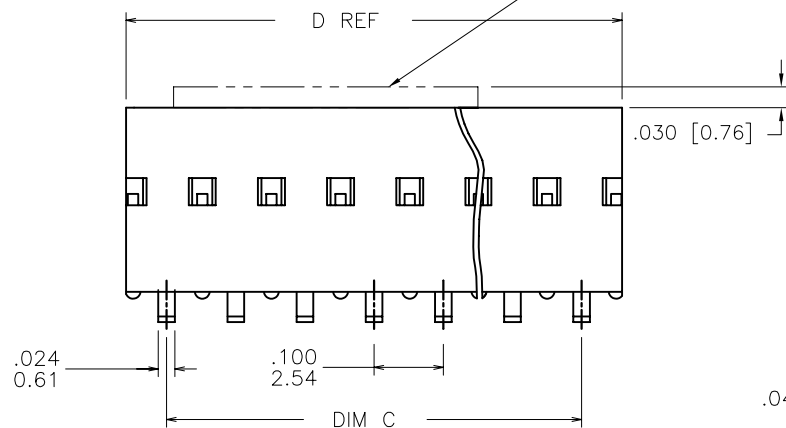
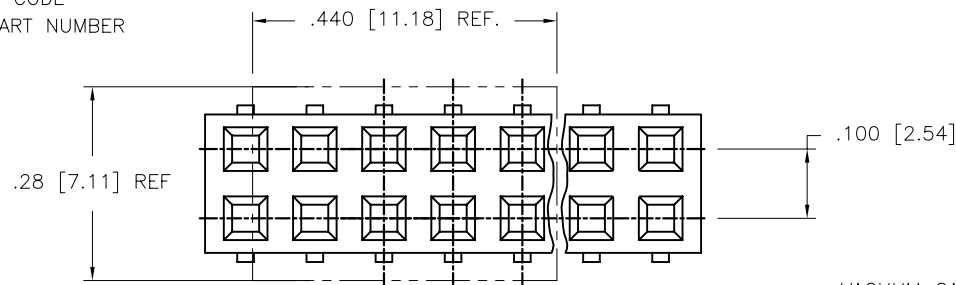


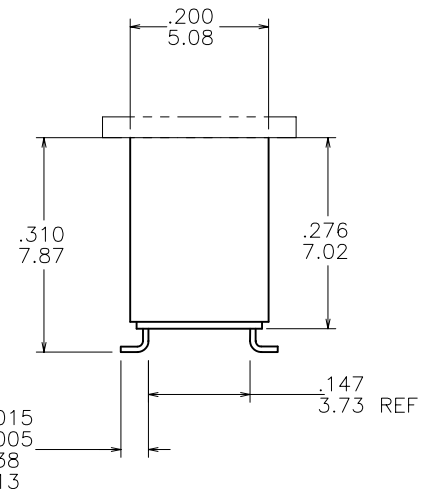
PRODUCT NUMBER
SEE TABLE

68046 - XXX - LF

- LEAD FREE OPTION
- PACKAGING OPTION NOTE 6. OMIT IF NOT REQUIRED
- NO OF POSITIONS PER ROW
- PLATING CODE
- BASE PART NUMBER



VACUUM CAP FOR
TAPE & REEL PACKAGING
OPTION. NOTE 8



mat'l. code				surface ISO 1302	tolerance ISO 406 ISO 1101	projection INCH/MM	product family DUBOX
ltr	ec'n no	dr	date	tolerances unless otherwise specified		scale 1:1	title
AM	V03-0309	HTB	04/26/03	angles	linear		SMT DOUBLE ROW
AN	V04-0986	DAI	10/13/04				VCC ASSEMBLY
AP	V04-1003	DAI	10/25/04	0°±2°			
AR	V05-0463	DPU	06/28/05	dr	J. SHREINER	11/07/90	dwg no
AS	M07-0143	ERE	03/03/07	engr	M. HAHN	11/07/90	sheet 1 of 5
AT	M07-0203	AGS	5/02/07	chr	M. HAHN	11/07/90	size
AU	M08-0065	MHT	3/04/05	appd	M. HAHN	11/07/90	A3
sheet	revision	AU	AU	AU	AU	AU	type
index	sheet	1	2	3	4	5	Product Customer Drawing

PRODUCT NUMBER NOTE 15	PLATING CONTACT AREA	PLATING SOLDER TAIL	MATERIAL REF
68046-2XX	15μ"/.38μ Au MIN OVER 50μ"/1.27μ Ni MIN SEE NOTE 18	100μ"/160μ" SN 2.54μ"/4.06μ"	NOTE 3&4
68046-3XX	30μ"/.76μ Au MIN OVER 50μ"/1.27μ Ni MIN SEE NOTE 18	100μ"/160μ" SN 2.54μ"/4.06μ"	NOTE 3&4
68046-4XX	100μ"/2.54 SN MIN OVER 50μ"/1.27μ Ni MIN	100μ"/160μ" SN 2.54μ"/4.06μ"	NOTE 3,4&17
68046-6XX	30μ"/.76μ Au MIN OVER 50μ"/1.27μ Ni MIN SEE NOTE 18	100μ"/160μ" SN 2.54μ"/4.06μ"	NOTE 3&4
68046-8XX	30μ"/.76μ Au MIN OVER 50μ"/1.27μ Ni MIN	200μ"/5.08μ SL MIN	NOTE 3&4

OBSOLETE

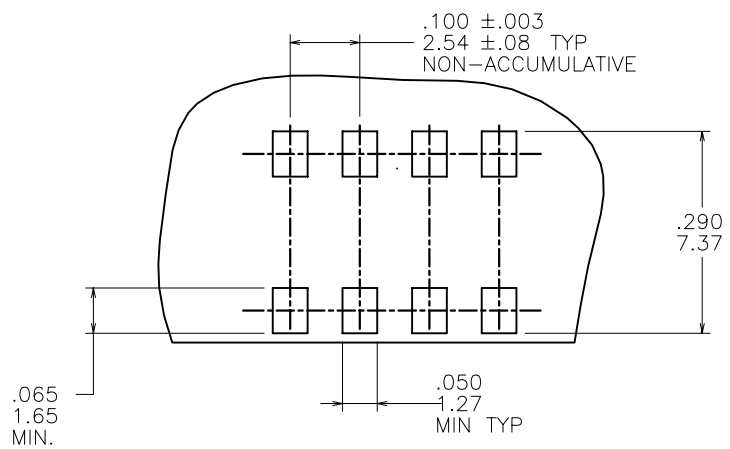


FIGURE A
TOP ENTRY
.025/.64 SQ PIN

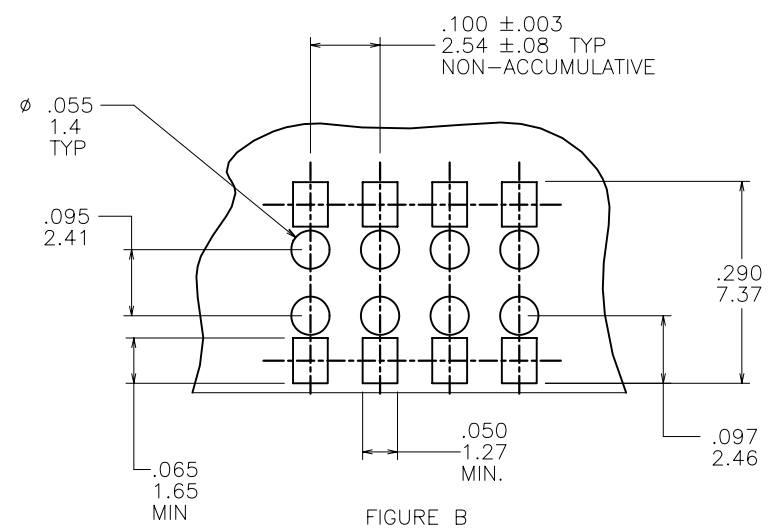
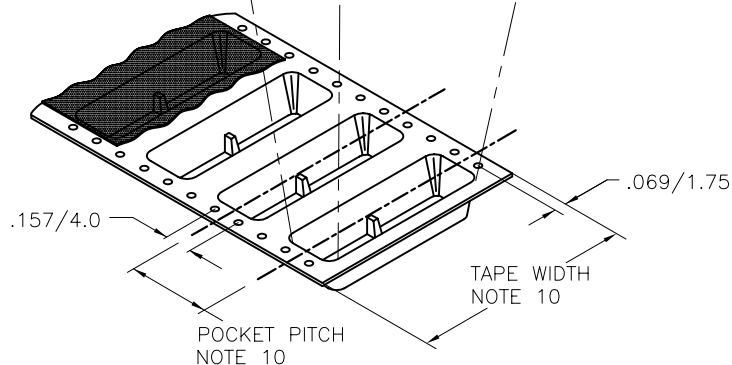


FIGURE B
BOTTOM ENTRY (THROUGH PWB)
.025/.64 SQ PIN

mat'l. code				surface ISO 1302	tolerance ISO 406 ISO 1101	projection INCH/MM	product family DUBOX
ltr	ecm no	dr	date	tolerances unless otherwise specified		scale 1:1	title SMT DOUBLE ROW VCC ASSEMBLY
AU				angles	linear		
				0°±2°	XXX±.005/XX±.13 XXXX±.0020/XXX±.05		
				dr	J. SHREINER 11/07/90	FCJ	dwg no 68046
				engr	M. HAHN 11/07/90		
				chr	M. HAHN 11/07/90		
				appd	M. HAHN 11/07/90		
sheet index	revision sheet						type Product Customer Drawing

VACUUM PICK-UP CAP
CENTRALLY LOCATED

DUBOX VERTICAL RECEPTACLE
DOUBLE ROW



TAPE AND REEL PACKAGING

SEE NOTE 7

NOTES:

- ①. TERMINAL MATERIAL: PHOSPHOR BRONZE.
EXTRA HARD
2. RECOMMENDED APPLICATION DATA:
A. RECOMMENDED SOLDER PAD PATTERN IS SHOWN IN FIGURE A & B.
B. ALL MATING PINS TO BE .025/.64 SQUARE ON TRUE CENTER OF
ON GIVEN TERMINAL SPACING WITHIN .015/.38 DIA.
C. SUGGESTED MATING PIN LENGTH .210±.010 [5.33±.51]
- ③. HOUSING MATERIAL: P.P.S. FILLED.
FLAME RETARDANT PER UL-94-V0.
COMPATIBLE WITH INFRA-RED SOLDERING.
COLOR: BLACK
PART WILL WITHSTAND EXPOSURE TO 260° C PEAK TEMPERATURE
FOR 20 SECONDS IN WAVE SOLDER, INFRA-RED OR
VAPOR PHASE SOLDER PROCESS.
- ④. PRESTAMPED POST PLATED TERMINAL.
5. FCI, FCI FINAL PART NUMBER AND DATE CODE
TO BE MARKED ON TUBE LABEL.
6. ADD SUFFIX 'P' TO DASH NUMBER AS FOURTH DIGIT FOR TAPE & REEL
PACKAGING.
- ⑦. TAPE AND REEL PACKAGING PER GES-14-334.
- ⑧. VACUUM CAP MATERIAL: L.C.P., FLAME RETARDANT UL 94 V-0.
COLOR : BLACK
CAP IS USED WITH TAPE AND REEL PACKAGING.
CAP IS TO BE CENTRALLY LOCATED ON PART.
9. TAPE AND REEL PACKAGING FOR 24mm WIDE AND BELOW HAVE PILOT HOLES ON
ONE SIDE OF TAPE ONLY. SIZES ABOVE 24mm HAVE PILOT HOLES ON BOTH
OF TAPE.
- ⑩. TAPE & REEL PACKAGING 24mm AND 32mm TAPE WIDTH, WITH 112mm POCKET
PITCH.
11. MAXIMUM LENGTH OF CONNECTOR FOR TAPE AND REEL PACKAGING IS 2.50
LONG /63.5mm
- ⑫. PART NUMBER WITH SUFFIX "U" IS FOR SAWING PURPOSES ONLY.
13. STANDARD TUBE PACKAGE PER BUS-14-097/3.
- ⑭. TAPE & REEL PACKAGING 72mm TAPE WIDTH WITH 16mm POCKET PITCH.
- ⑮. ADD LF SUFFIX AT THE END OF PART NUMBER FOR LEAD FREE OPTION
16. THESE PRODUCTS MEETS EUROPEAN UNION DIRECTIVES AND OTHER
COUNTRY REGULATION AS DESCRIBED IN GS-22-008.
- ⑰. "THIS PRODUCT HAS 100% TIN PLATING IN THE INTERFACE AND
HAS NOT BEEN TESTED FOR WHISKER GROWTH IN ALL INTERCONNECT
ENVIRONMENTS".
- ⑱. PLATING OPTIONS:
MAY BE EITHER GOLD OR GXT PLATED AT MANUFACTURER'S OPTION.

mat'l. code				surface ISO 1302	tolerance ISO 406 ISO 1101	projection INCH/MM	product family DUBOX
ltr	ecr no	dr	date	tolerances unless otherwise specified		INCH/MM scale 1:1	title
AU				angles	linear		SMT DOUBLE ROW VCC ASSEMBLY
				0°±2°	XXX±.01/XX±.3 XXX±.005/XX±.13 XXXX±.0020/XXX±.05		
				dr	J. SHREINER	11/07/90	dwg no
				enrg	M. HAHN	11/07/90	sheet 3 of 5
				chr	M. HAHN	11/07/90	size
				appd	M. HAHN	11/07/90	A3
sheet	revision						type
index	sheet						Product Customer Drawing



Copyright FCJ

PRODUCT NUMBER	NO. OF POS.	C DIM	D DIM	TAPE & REEL PACKAGING	LF OPTION
68046-Y02	2 X 2	.100/2.540	.217/5.511	NO	NOTE 15
↑ -Y03	2 X 3	.200/5.080	.317/8.051	NO	
-Y04	2 X 4	.300/7.620	.417/10.591	NO	
-Y05	2 X 5	.400/10.160	.517/13.131	NO	
-Y06	2 X 6	.500/12.700	.617/15.671	NO	
-Y07	2 X 7	.600/15.240	.717/18.211	NO	
-Y08	2 X 8	.700/17.780	.817/20.751	NO	
-Y09	2 X 9	.800/20.320	.917/23.291	NO	
-Y10	2 X 10	.900/22.860	1.017/25.831	NO	
-Y11	2 X 11	1.000/25.400	1.117/28.371	NO	
-Y12	2 X 12	1.100/27.940	1.217/30.911	NO	
-Y13	2 X 13	1.200/30.480	1.317/33.451	NO	
-Y14	2 X 14	1.300/33.020	1.417/35.991	NO	
-Y15	2 X 15	1.400/35.560	1.517/38.531	NO	
-Y16	2 X 16	1.500/38.100	1.617/41.071	NO	
-Y17	2 X 17	1.600/40.640	1.717/43.611	NO	
-Y18	2 X 18	1.700/43.180	1.817/46.151	NO	
-Y19	2 X 19	1.800/45.720	1.917/48.691	NO	
-Y20	2 X 20	1.900/48.260	2.017/51.231	NO	
-Y21	2 X 21	2.000/50.800	2.117/53.771	NO	
-Y22	2 X 22	2.100/53.340	2.217/56.311	NO	
-Y23	2 X 23	2.200/55.880	2.317/58.851	NO	
-Y24	2 X 24	2.300/58.420	2.417/61.391	NO	
68046-Y25	2 X 25	2.400/60.960	2.517/63.931	NO	

mat'l. code				surface ISO 1302 <input checked="" type="checkbox"/>		tolerance ISO 406 ISO 1101		projection 		product family DUBOX	
ltr	ecn no	dr	date	tolerances unless otherwise specified						title	
AU				angles	linear	XX±.01/XX±.3		INCH/MM		SMT DOUBLE ROW	
						XXX±.005/XX±.13		scale 1:1		VCC ASSEMBLY	
				0°±2°		XXXX±.0020/XXX±.05				dwg no	
				dr	J. SHREINER	11/07/90				sheet 4 of 5 size	
				engr	M. HAHN	11/07/90				68046 A3	
				chr	M. HAHN	11/07/90				type	
				appd	M. HAHN	11/07/90				Product Customer Drawing	
sheet index	revision sheet										



FCIconnect.com

Copyright FCI

PROD. NUMBER	NO. POSI.	C DIM	D DIM	TAPE & REEL PACKAGING	LF OPTION
68046-Y26	2 X 26	2.500/63.500	2.617/66.471	NO	NOTE 15
↑ -Y27	2 X 27	2.600/66.040	2.717/69.011	NO	
-Y28	2 X 28	2.700/68.580	2.817/71.551	NO	
-Y29	2 X 29	2.800/71.120	2.917/74.091	NO	
-Y30	2 X 30	2.900/73.660	3.017/76.631	NO	
-Y31	2 X 31	3.000/76.200	3.117/79.171	NO	
-Y32	2 X 32	3.100/78.740	3.217/81.711	NO	
-Y33	2 X 33	3.200/81.280	3.317/84.251	NO	
-Y34	2 X 34	3.300/83.820	3.417/86.791	NO	
A -Y35	2 X 35	3.400/86.360	3.517/89.331	NO	
-Y36	2 X 36	3.500/88.900	3.617/91.871	NO	
-Y37	2 X 37	3.600/91.440	3.717/94.411	NO	
-Y38	2 X 38	3.700/93.980	3.817/96.951	NO	
-Y39	2 X 39	3.800/96.520	3.917/99.491	NO	
-Y40	2 X 40	3.900/99.060	4.017/102.031	NO	
-Y41	2 X 41	4.000/101.600	4.117/104.571	NO	
-Y42	2 X 42	4.100/104.140	4.217/107.111	NO	
-Y43	2 X 43	4.200/106.680	4.317/109.651	NO	
-Y44	2 X 44	4.300/109.220	4.417/112.191	NO	
-Y45	2 X 45	4.400/111.760	4.517/114.731	NO	
B -Y46	2 X 46	4.500/114.300	4.617/117.271	NO	
-Y47	2 X 47	4.600/116.840	4.717/119.811	NO	
-Y48	2 X 48	4.700/119.380	4.817/122.351	NO	
-Y49	2 X 49	4.800/121.920	4.917/124.891	NO	
-Y50	2 X 50	4.900/124.460	5.017/127.431	NO	
-Y50U	2 X 50	4.900/124.460	5.017/127.431	NO	
-Y03P	2 X 3	0.200/5.080	0.317/8.051	YES	NOTE 12 NOTE 6 & 9 NOTE 6 & 10 NOTE 6 & 10 NOTE 6 & 10 NOTE 6 & 10 NOTE 6 & 9 — OBSOLETE NOTE 6 & 14 NOTE 6 & 14
-Y04P	2 X 4	0.300/7.620	0.417/10.592	YES	
↓ -Y05P	2 X 5	0.400/10.160	0.517/13.131	YES	
68046-Y06P	2 X 6	0.500/12.700	0.617/15.671	YES	
68046-Y07P	2 X 7	0.600/15.240	0.717/18.211	YES	
C -68046-Y12P	2 X 12	1.100/27.94	1.217/30.91	YES	
68046-Y13P	2 X 13	1.200/30.48	1.317/33.45	YES	
68046-Y20P	2 X 20	1.900/48.260	2.017/51.231	YES	

mat'l. code				surface ISO 1302 <input checked="" type="checkbox"/>		tolerance ISO 406 ISO 1101		projection 		product family DUBOX			
ltr	ecn no	dr	date	tolerances unless otherwise specified						title			
AU				angles	linear	XX±.01/XX±.3		INCH/MM		SMT DOUBLE ROW VCC ASSEMBLY			
				0°±2°		XXX±.005/XX±.13		scale 1:1		dwg no			
						XXXX±.0020/XXX±.05				sheet 5 of 5 size			
				dr	J. SHREINER	11/07/90				A3			
				engr	M. HAHN	11/07/90				68046			
				chr	M. HAHN	11/07/90				type Product Customer Drawing			
				appd	M. HAHN	11/07/90							
sheet index	revision												
	sheet												