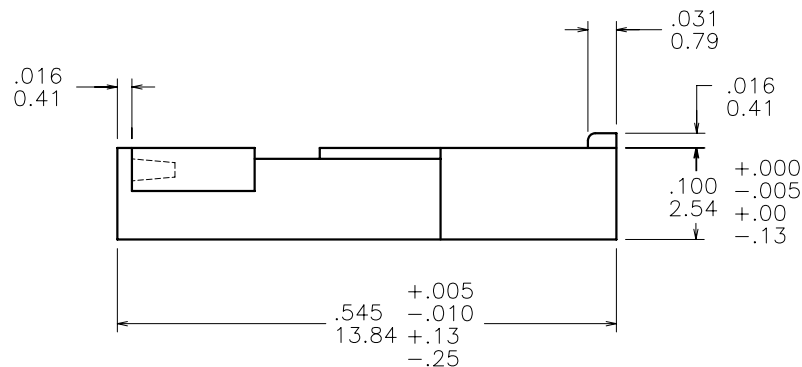
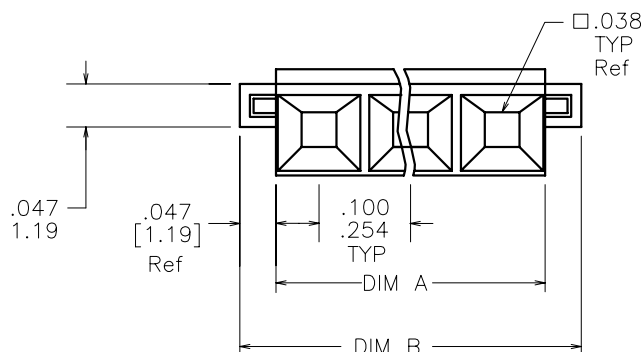
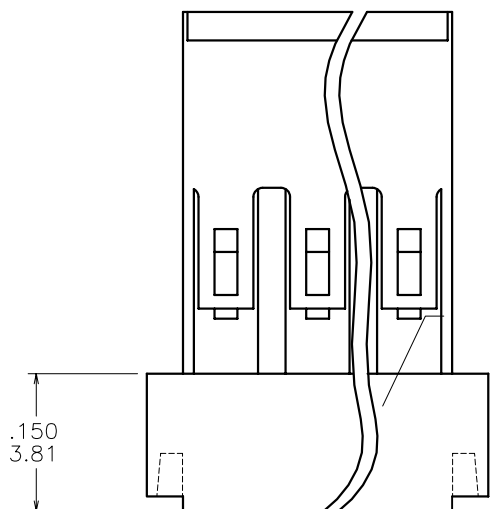


PRODUCT NUMBER	NO.OF POS	DIM A MAX	DIM B
67954-001LF	2	.200/5.08	.273/6.93
67954-002LF	3	.300/7.62	.373/9.47
67954-003LF	4	.400/10.16	.473/12.01

NOTES:

1. TERMINALS MUST BE CRIMPED PROPERLY FOR SATISFACTORY LATCHING. SEE TA-75 FOR CRIMPING INSTRUCTIONS. FOR TERMINAL APPLICATION SEE TA-531. PRODUCT SPECIFICATION: BUS-12-067.
2. MATERIAL: POLYAMIDE, GLASS REINFORCED, FLAME RETARDANT PER UL 94V-0, COLOR: BLACK.
3. THIS HOUSING IS INTENDED FOR USE WITH MINI PV TERMINAL WITH 22-36 GAUGE WIRE
4. PRODUCT MEETS EUROPEAN UNION DIRECTIVES AND OTHER COUNTRY REGULATIONS AS DESCRIBED IN GS-22-008.
5. THE PRODUCT IS NOT INTENDED TO BE EXPOSED TO A MANUFACTURING SOLDER PROCESS.



mat'l. code SEE NOTE 2				surface	tolerance	projection	product family
ltr	ec'n no	dr	date	tolerances unless otherwise specified			PV HOUSINGS
C	v51218	MDF	1995-11-21	angles	linear	INCH/MM	title
D	v90973	CGC	1999-05-10	linear	linear	scale 5:1	MINI LATCH HOUSING SR
E	v03-0857	MRA	2003-08-05	0°±2°	linear		POLARIZED .100 [2.54] CC
F	v05-0715	HTB	2005-07-29	dr	A. RAISTRICK	1991-01-15	dwg no
G	v06-0446	HTB	2006-05-15	engr	C. TREXLER	1991-01-15	sheet 1 of 1
H	v07-0532	HTB	2007-08-16	chr	C. TREXLER	1991-01-15	size
				appd	C. TREXLER	1991-01-15	A3
sheet	revision	H					type
index	sheet	1					Product Customer Drawing