



FCIconnect.com

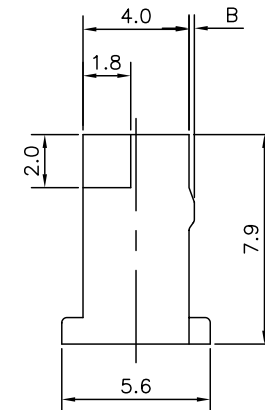
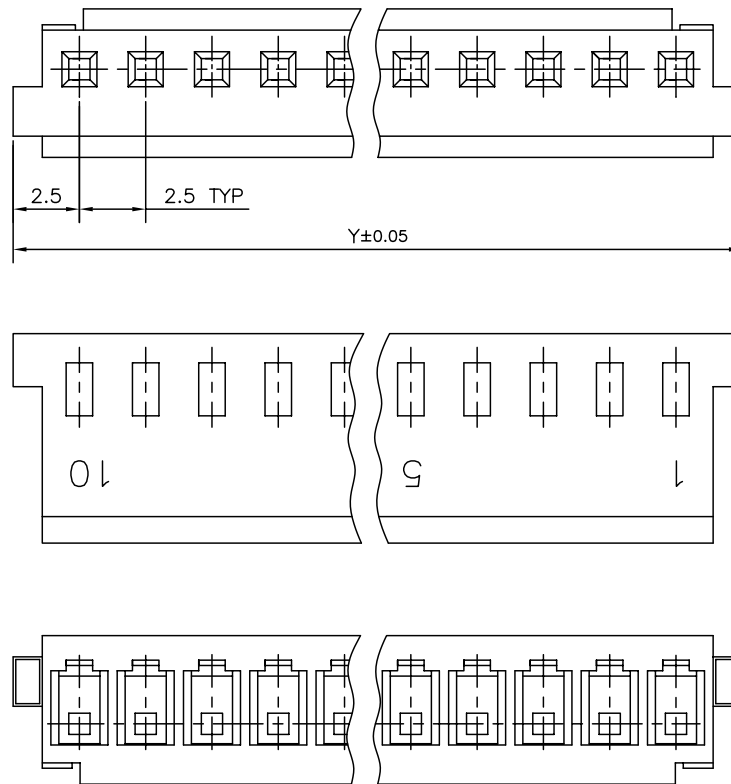
Copyright FCI

20	14	67096-058	0.05	37.5
19	20	67096-020	0.05	52.5
18	19	67096-019	0.05	50.0
17	18	67096-018	0.05	47.5
16	17	67096-017	0.05	45.0
15	16	67096-016	0.05	42.5
14	15	67096-015	0.05	40.0
13	14	67096-014	0.2	37.5
12	13	67096-013	0.2	35.0
11	12	67096-012	0.2	32.5
10	11	67096-011	0.2	30.0
9	10	67096-010	0.2	27.5
8	9	67096-009	0.2	25.0
7	8	67096-008	0.2	22.5
6	7	67096-007	0.2	20.0
5	6	67096-006	0.2	17.5
4	5	67096-005	0.3	15.0
3	4	67096-004	0.3	12.5
2	3	67096-003	0.3	10.0
1	2	67096-002	0.3	7.5
SL.No.	POSITION	PARTNUMBER	B	Y

NOTE:

FLASH SPECIFICATION

- OUTSIDE :0.3 MAX
- PIN HOLE :0.15 MAX
- LOCKING FEATURE :0.15 MAX



NOTES:-

- 1.This Products meet European Union Directives and other country Regulations as described in GS-22-008.
- 2."LF" Suffix to Product number for Rohs compatible/lead free version
3. Parts with and without "LF" suffix are form-fit and functionally identical. "LF" Suffix provided for part number standardization of part that meets Rohs requirements.
4. Lead Free or ROHS Directive labelling to be provided as per GS-14-920

mat'l. code SEE NOTE 4				surface ISO 1302 <input checked="" type="checkbox"/>	tolerance ISO 406 ISO 1101	projection 	product family RELIMATE			
ltr	ecn no	dr	date	tolerances unless otherwise specified		 MM	title RELIMATE HOUSING			
L	106-0123	HVN	2006/07/20	angles	linear		dwg no 67096			
				0°±2°						
				dr	MINI K VANDANATH	2003/04/14	sheet 1 of 1			
				enr	Hiran V N	2003/04/14	size A3			
				chr	HIRAN V N	2006/07/20	type Product Customer Drawing			
				appd	HIRAN V N	2006/07/20				
sheet index	revision	L								
	sheet	1								