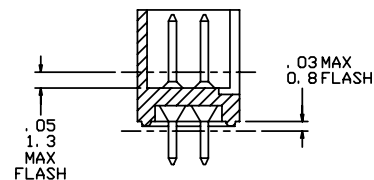
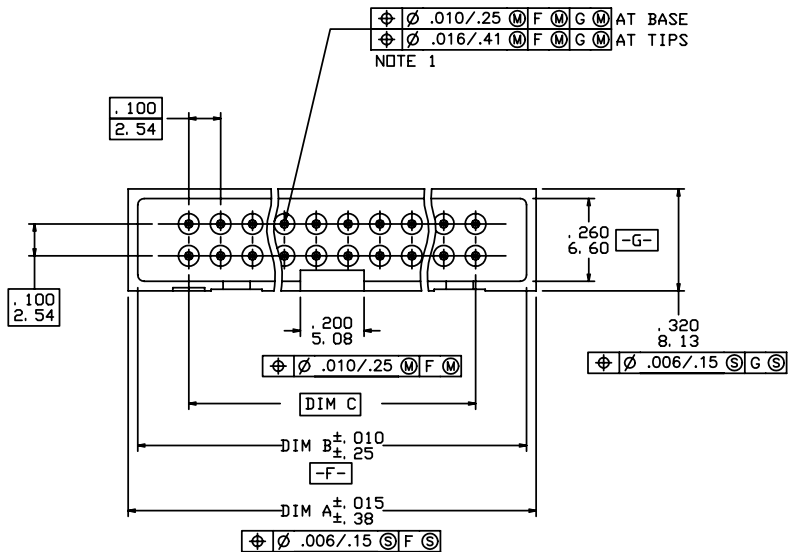
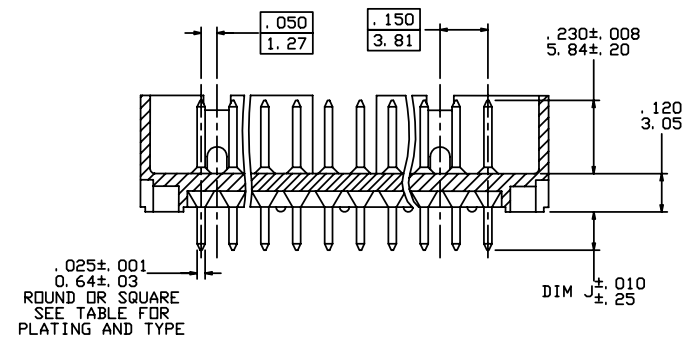
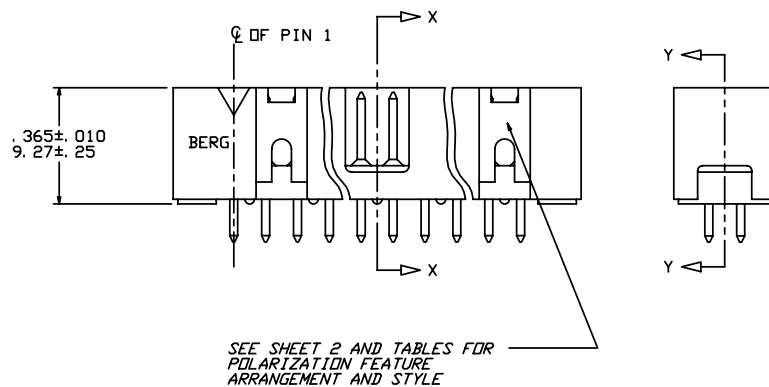
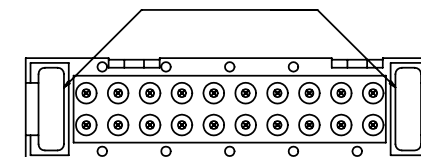


PRODUCT NUMBER
SEE TABLE



SECTION X-X

FDR 66506-254 THRU -279 AND -281 THRU -306 ONLY.



SECTION Y-Y

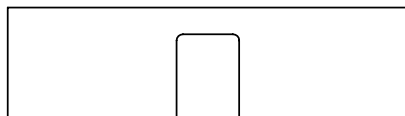
mat'l. code				surface ISO 1302		tolerance ISO 406 ISO 1101		projection INCH/MM		product family QUICKIE			
ltr	ecn no	dr	date	tolerances unless otherwise specified		linear		scale 1:1		title HEADER QUICKIE SLIM LINE VERTICAL 4 WALL			
AD	V42013	LSS	1/25/95	angles		XX $\pm .01$ /XX ± 0.3				dwg no			
AE	V50332	MRC	5/25/95	Orr2r		XXX $\pm .005$ /XXX ± 0.13				sheet 1 of 10			
AF	N05-0060	ERE	8/08/05			XXXX $\pm .0020$ /XXXX ± 0.051				size			
AG	M06-0282	AGS	7/22/06	dr	L. SANDERS	1/25/95				66506			
AH	M07-0363	MHT	8/17/07	enrg	M. SMYK	1/25/95				A3			
AJ	N08-0138	R.B	07/08/08	chr	J. ROMBERGER	1/25/95				type			
				appd	M. SMYK	1/25/95				Product Customer Drawing			
sheet	revision	AJ	AJ	AJ	AJ	AJ	AJ	AJ	AJ				
index	sheet	1	2	3	4	5	6	7	8	9	10		

PDM: Rev: AJ

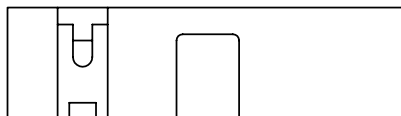
STATUS: Released

Printed: Jul 12, 2008

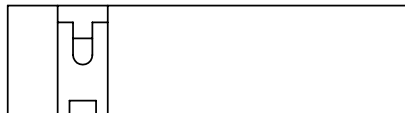
PRODUCT NUMBER
SEE TABLE



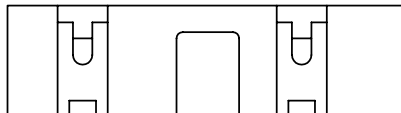
2 X 5
STYLE A



2 X 7
STYLE C



2 X 5
STYLE B



2 X 8 THUR 2 X 30
STYLE D



STYLE E

NOTES:

1. SAME POSITION TOLERANCE APPLIES TO BOTH ENDS OF PINS.
2. MOLDING MATERIAL: GLASS-FILLED POLYESTER, FLAME RETARDANT PER UL 94 V-0, COLOR: BLUE.
3. 1° MAX. DRAFT PERMISSIBLE ON ALL SURFACES.
4. 4 LBS./1.8 KG MIN. TERMINAL PULL-OUT FORCE.
5. TERMINAL MATERIAL: PHOSPHORUS BRONZE.
6. MOLDING MATERIAL: GLASS FILLED POLYESTER, FLAME RETARDANT PER UL 94V-0, COLOR - BLACK.
7. MOLDING MATERIAL: GLASS FILLED POLYESTER, FLAME RETARDANT PER UL 94V-0, COLOR - GREY.
8. PART NUMBERS WITH "R" FOLLOWING THE PART NUMBER (EXAMPLE 66506-326 R) HAS RETENTION. (ONLY PARTS WITH .105,.120, AND .150 ROUND OR SQUARE TAILS CAN HAVE RETENTION.) LOCATION IS MANUFACTORS OPTION.
FOR ROUND PIN CONNECTORS:
15 LBS MAX INSERTION AND .25 LB MIN RETENTION FORCE WHEN USED IN .035±.003 DIA HOLES AND .062/1.57 THICK PC BOARD.
FOR SQUARE PIN CONNECTORS:
15 LBS MAX INSERTION AND .5 LB MIN RETENTION FORCE WHEN USED IN .040±.003 DIA HOLES AND .062/1.57 THICK PC BOARD.
9. PART NUMBERS WITH "T" FOLLOWING PART NUMBER (EXAMPLE 66506-068 T IS PACKED IN TUBES.) (CALL PRODUCT MANAGER FOR AVAILABILITY.)
10. SEE 68751 FOR LATCHES.
11. MAY BE ORDERED WITH "G" PACK PACKAGING BY ADDING "G" TO DASH NUMBER.
12. ADD "LF" SUFFIX AT THE END OF PART NUMBER FOR LEAD FREE OPTION & PART NUMBERS WITH "LF" SUFFIX ADDED IN THE TABLE ARE LEAD FREE.
13. IF "LF" P/N THE PRODUCT MEETS EUROPEAN UNION DIRECTIVES AND OTHER COUNTRY REGULATION AS DESCRIBED IN GS-22-008.
14. THE HOUSING WILL WITHSTAND EXPOSURE TO 260°C PEAK TEMPERATURE FOR 15 SECONDS IN A WAVE SOLDER APPLICATION WITH A 1.5mm MINIMUM THICK CIRCUIT BOARD.SEE APPLICATION NOTES/PROCEDURES IF THEY ARE AVAILABLE.
15. "THIS PRODUCT HAS 100% TIN PLATING IN THE INTERFACE AND HAS NOT BEEN TESTED FOR WHISKER GROWTH IN ALL INTERCONNECT ENVIRONMENTS."
16. PLATING OPTIONS:
MAY BE EITHER GOLD OR GXT PLATED AT MANUFACTURER'S OPTION.

mat'l. code				surface ISO 1302	tolerance ISO 406 ISO 1101	projection INCH/MM	product family QUICKIE			
ltr	ecn no	dr	date	tolerances unless otherwise specified		INCH/MM	title HEADER QUICKIE SLIM LINE VERTICAL 4 WALL			
AJ				angles	linear					
				Or 2r		scale 1:1	dwg no 66506			
				dr	L. SANDERS 1/25/95					
				enr	M. SMYK 1/25/95		sheet 2 of 10 size A3			
				chr	J. ROMBERGER 1/25/95					
				appd	M. SMYK 1/25/95		type Product Customer Drawing			
sheet index	revision sheet									



FCIconnect.com

Copyright FCI

PRODUCT NUMBER NOTE 8, 9 & 12	SIZE	STYLE	DIM A	DIM B	DIM C	DIM J	PIN PLATING (NOTE 16)	PIN TYPE	PLASTIC MATERIAL
66506-001	2 X 5	A	.78/19.8	.72/18.3	.400/10.16	.105/2.67	30u"/0.76u Au OR GXT OVER 50u"/1.27u Ni	RD	NOTE 2
-002						.150/3.81	30u"/0.76u Au OR GXT OVER 50u"/1.27u Ni	RD	
-003						.675/17.15	30u"/0.76u Au OR GXT OVER 50u"/1.27u Ni	SQ	
-004						.105/2.67	120/200u" TIN LEAD	SQ	
-004LF						.105/2.67	100/160u" TIN	SQ	
-005						.150/3.81	120/200u" TIN LEAD	SQ	
-005LF						.150/3.81	100/160u" TIN	SQ	
-006						.675/17.15	120/200u" TIN LEAD	SQ	
-006LF	2 X 5	A	.78/19.8	.72/18.3	.400/10.16	.675/17.15	100/160u" TIN	SQ	
-007	2 X 10	D	1.28/32.5	1.22/31.0	.900/22.86	.105/2.67	30u"/0.76u Au OR GXT OVER 50u"/1.27u Ni	RD	
-008						.150/3.81	30u"/0.76u Au OR GXT OVER 50u"/1.27u Ni	RD	
-009						.675/17.15	30u"/0.76u Au OR GXT OVER 50u"/1.27u Ni	SQ	
-010						.105/2.67	120/200u" TIN LEAD	SQ	
-010LF						.105/2.67	100/160u" TIN	SQ	
-011						.150/3.81	120/200u" TIN LEAD	SQ	
-011LF						.150/3.81	100/160u" TIN	SQ	
-012						.675/17.15	120/200u" TIN LEAD	SQ	
-012LF	2 X 10		1.28/32.5	1.22/31.0	.900/22.86	.675/17.15	100/160u" TIN	SQ	
-013	2 X 13		1.58/40.1	1.52/38.6	1.200/30.48	.105/2.67	30u"/0.76u Au OR GXT OVER 50u"/1.27u Ni	RD	
-014						.150/3.81	30u"/0.76u Au OR GXT OVER 50u"/1.27u Ni	RD	
-015						.675/17.15	30u"/0.76u Au OR GXT OVER 50u"/1.27u Ni	SQ	
-016						.105/2.67	120/200u" TIN LEAD	SQ	
-016LF						.105/2.67	100/160u" TIN	SQ	
-017						.150/3.81	120/200u" TIN LEAD	SQ	
-017LF						.150/3.81	100/160u" TIN	SQ	
-018						.675/17.15	120/200u" TIN LEAD	SQ	
-018LF	2 X 13		1.58/40.1	1.52/38.6	1.200/30.48	.675/17.15	100/160u" TIN	SQ	
-019	2 X 17		1.98/50.3	1.92/48.8	1.600/40.64	.105/2.67	30u"/0.76u Au OR GXT OVER 50u"/1.27u Ni	RD	
-020						.150/3.81	30u"/0.76u Au OR GXT OVER 50u"/1.27u Ni	RD	
-021						.675/17.15	30u"/0.76u Au OR GXT OVER 50u"/1.27u Ni	SQ	
-022						.105/2.67	120/200u" TIN LEAD	SQ	
-022LF						.105/2.67	100/160u" TIN	SQ	
-023						.150/3.81	120/200u" TIN LEAD	SQ	
-023LF						.150/3.81	100/160u" TIN	SQ	
-024						.675/17.15	120/200u" TIN LEAD	SQ	
66506 -024LF	2 X 17	D	1.98/50.3	1.92/48.8	1.600/40.64	.675/17.15	100/160u" TIN	SQ	NOTE 2

mat'l. code				surface ISO 1302 <input checked="" type="checkbox"/>		tolerance ISO 406 ISO 1101		projection 		product family QUICKIE			
ltr		ecn no		dr		date		tolerances unless otherwise specified		title			
AJ								linear		HEADER QUICKIE SLIM LINE VERTICAL 4 WALL			
								angles		scale 1:1			
								0.0125		sheet 3 of 10			
								dr		size			
								L. SANDERS		A3			
								1/25/95					
								enr					
								M. SMYK					
								1/25/95					
								chr					
								J. ROMBERGER					
								1/25/95					
								appd					
								M. SMYK					
								1/25/95					
sheet index		revision sheet								type Product Customer Drawing			



FCIconnect.com

Copyright FCI

PRODUCT NUMBER NOTE 8,9 & 12	SIZE	STYLE	DIM A	DIM B	DIM C	DIM J	PIN PLATING (NOTE 16)	PIN TYPE	PLASTIC MATERIAL
66506 -049	2 X 5	A	.78/19.8	.72/18.3	.400/10.16	.150/3.81	30u"/0.76u GXT OR Au WITH GOLD FLASH	RD	NOTE 2
-050	2 X 10	D	1.28/32.5	1.22/31.0	.900/22.86				
-051	2 X 13		1.58/40.1	1.52/38.6	1.200/30.48				
-052	2 X 17		1.98/50.3	1.92/48.8	1.600/40.64				
-053	2 X 20		2.28/57.9	2.22/56.4	1.900/48.26				
-054	2 X 25	D	2.78/70.6	2.72/69.1	2.400/60.96				
-055	2 X 7	C	.98/24.9	.92/23.4	.600/15.24				
-056	2 X 8	D	1.08/27.4	1.02/25.9	.700/17.78	.150/3.81	30u"/0.76u GXT OR Au WITH GOLD FLASH		
-057	2 X 30		3.28/83.3	3.22/81.8	2.900/73.66	.105/2.67	30u"/0.76u Au OR GXT OVER 50u"/1.27u Ni		
-058						.150/3.81	30u"/0.76u Au OR GXT OVER 50u"/1.27u Ni	RD	
-059						.675/17.15	30u"/0.76u Au OR GXT OVER 50u"/1.27u Ni	SQ	
-060						.105/2.67	120/200u" TIN LEAD	SQ	
-060LF						.105/2.67	100/160u" TIN	SQ	
-061						.150/3.81	120/200u" TIN LEAD	SQ	
-061LF						.150/3.81	100/160u" TIN	SQ	
-062						.675/17.15	120/200u" TIN LEAD	SQ	
-062LF						.675/17.15	100/160u" TIN	SQ	
-063						.105/2.67	30u"/0.76u GXT OR Au WITH GOLD FLASH	RD	
-064						.150/3.81		RD	
-065	2 X 30	D	3.28/83.3	3.22/81.8	2.900/73.66	.675/17.15		SQ	
-066	2 X 5	A	.78/19.8	.72/18.3	.400/10.16	.105/2.67		RD	
-067	2 X 5	A	.78/19.8	.72/18.3	.400/10.16	.675/17.15		SQ	
-068	2 X 7	C	.98/24.9	.92/23.4	.600/15.24	.105/2.67		RD	
-069	2 X 7	C	.98/24.9	.92/23.4	.600/15.24	.675/17.15		SQ	
-070	2 X 8	D	1.08/27.4	1.02/25.9	.700/17.78	.105/2.67	30u"/0.76u GXT OR Au WITH GOLD FLASH	RD	
-071	2 X 8	D	1.08/27.4	1.02/25.9	.700/17.78	.675/17.15	30u"/0.76u GXT OR Au WITH GOLD FLASH	SQ	
-072	2 X 10		1.28/32.5	1.22/31.0	.900/22.86	.105/2.67		RD	
-073	2 X 10		1.28/32.5	1.22/31.0	.900/22.86	.675/17.15		SQ	
-074	2 X 13		1.58/40.1	1.52/38.6	1.200/30.48	.105/2.67		RD	
-075	2 X 13		1.58/40.1	1.52/38.6	1.200/30.48	.675/17.15		SQ	
-076	2 X 17		1.98/50.3	1.92/48.8	1.600/40.64	.105/2.67		RD	
-077	2 X 17		1.98/50.3	1.92/48.8	1.600/40.64	.675/17.15		SQ	
-078	2 X 20		2.28/57.9	2.22/56.4	1.900/48.26	.105/2.67		RD	
-079	2 X 20		2.28/57.9	2.22/56.4	1.900/48.26	.675/17.15		SQ	
-080	2 X 25		2.78/70.6	2.72/69.1	2.400/60.96	.105/2.67		RD	
66506 -081	2 X 25	D	2.78/70.6	2.72/69.1	2.400/60.96	.675/17.15	30u"/0.76u GXT OR Au WITH GOLD FLASH	SQ	NOTE 2

mat'l. code				surface ISO 1302 ✓		tolerance ISO 406 ISO 1101		projection 		product family QUICKIE					
ltr		ecn no		dr		date		tolerances unless otherwise specified				title			
AJ								angles		linear		XX±.01/XX±.03		INCH/MM	
								Ort 2r				XXX±.005/XXX±.013		scale 1:1	
								dr		L. SANDERS		1/25/95		sheet 5 of 10	
								enrg		M. SMYK		1/25/95		size	
								chr		J. ROMBERGER		1/25/95		A3	
								appd		M. SMYK		1/25/95		type Product Customer Drawing	
sheet index		revision sheet													



FCIconnect.com

Copyright FCI

PRODUCT NUMBER NOTE 8,9 & 12	SIZE	STYLE	DIM A	DIM B	DIM C	DIM J	PIN PLATING (NOTE 16)	PIN TYPE	PLASTIC MATERIAL
66506-082	2 X 5	A	.78/19.8	.72/18.3	.400/10.16	.105/2.67	15u"/0.38u Au OR GXT OVER 50u/1.27u Ni	RD	NOTE 2
-083	2 X 5	A	.78/19.8	.72/18.3	.400/10.16	.150/3.81		RD	
-084	2 X 5	A	.78/19.8	.72/18.3	.400/10.16	.675/17.15		SQ	
-085	2 X 7	C	.98/24.9	.92/23.4	.600/15.24	.105/2.67		RD	
-086	2 X 7	C	.98/24.9	.92/23.4	.600/15.24	.150/3.81		RD	
-087	2 X 7	C	.98/24.9	.92/23.4	.600/15.24	.675/17.15		SQ	
-088	2 X 8	D	1.08/27.4	1.02/25.9	.700/17.78	.105/2.67		RD	
-089	2 X 8		1.08/27.4	1.02/25.9	.700/17.78	.150/3.81		RD	
-090	2 X 8		1.08/27.4	1.02/25.9	.700/17.78	.675/17.15		SQ	
-091	2 X 10		1.28/32.5	1.22/31.0	.900/22.86	.105/2.67		RD	
-092	2 X 10		1.28/32.5	1.22/31.0	.900/22.86	.150/3.81		RD	
-093	2 X 10		1.28/32.5	1.22/31.0	.900/22.86	.675/17.15		SQ	
-094	2 X 13		1.58/40.1	1.52/38.6	1.200/30.48	.105/2.67		RD	
-095	2 X 13		1.58/40.1	1.52/38.6	1.200/30.48	.150/3.81		RD	
-096	2 X 13		1.58/40.1	1.52/38.6	1.200/30.48	.675/17.15		SQ	
-097	2 X 17		1.98/50.3	1.92/48.8	1.600/40.64	.105/2.67		RD	
-098	2 X 17		1.98/50.3	1.92/48.8	1.600/40.64	.150/3.81		RD	
-099	2 X 17		1.98/50.3	1.92/48.8	1.600/40.64	.675/17.15		SQ	
-100	2 X 20		2.28/57.9	2.22/56.4	1.900/48.26	.105/2.67		RD	
-101	2 X 20		2.28/57.9	2.22/56.4	1.900/48.26	.150/3.81		RD	
-102	2 X 20		2.28/57.9	2.22/56.4	1.900/48.26	.675/17.15		SQ	
-103	2 X 25		2.78/70.6	2.72/69.1	2.400/60.96	.105/2.67		RD	
-104	2 X 25		2.78/70.6	2.72/69.1	2.400/60.96	.150/3.81		RD	
-105	2 X 25	D	2.78/70.6	2.72/69.1	2.400/60.96	.675/17.15	15u"/0.38u Au OR GXT OVER 50u/1.27u Ni	SQ	
-106	2 X 30	D	3.28/83.3	3.22/81.8	2.900/73.66	.105/2.67	15u"/0.38u Au OR GXT OVER 50u/1.27u Ni	RD	
-107	2 X 30	D	3.28/83.3	3.22/81.8	2.900/73.66	.150/3.81	15u"/0.38u Au OR GXT OVER 50u/1.27u Ni	RD	
-108	2 X 30	D	3.28/83.3	3.22/81.8	2.900/73.66	.675/17.15	15u"/0.38u Au OR GXT OVER 50u/1.27u Ni	SQ	
-109	2 X 5	B	.78/19.8	.72/18.3	.400/10.16	.105/2.67	30u"/0.76u Au OR GXT OVER 50u"/1.27u Ni	RD	
-110						.150/3.81	30u"/0.76u Au OR GXT OVER 50u"/1.27u Ni	RD	
-111						.675/17.15	30u"/0.76u Au OR GXT OVER 50u"/1.27u Ni	SQ	
-112						.105/2.67	120/200u" TIN LEAD	SQ	
-112LF						.105/2.67	100/160u" TIN	SQ	
-113						.150/3.81	120/200u" TIN LEAD	SQ	
-113LF						.150/3.81	100/160u" TIN	SQ	
-114						.675/17.15	120/200u" TIN LEAD	SQ	
66506-114LF	2 X 5	B	.78/19.8	.72/18.3	.400/10.16	.675/17.15	100/160u" TIN	SQ	NOTE 2

mat'l. code				surface ISO 1302 ✓		tolerance ISO 406 ISO 1101		projection 		product family QUICKIE			
ltr		ecn no		dr		date		tolerances unless otherwise specified		title			
AJ								angles linear		XX±.01/XX±.03		type	
								Ort2r		XXX±.005/XXX±.013		sheet 6 of 10	
										XXXX±.0020/XXX±0.051		size	
								dr		L. SANDERS 1/25/95		A3	
								enrg		M. SMYK 1/25/95			
								chr		J. ROMBERGER 1/25/95			
								appd		M. SMYK 1/25/95			
sheet index		revision sheet										type Product Customer Drawing	

Copyright FCI



B

A

C

D

PRODUCT NUMBER NOTE 8, 9 & 12	SIZE	STYLE	DIM A	DIM B	DIM C	DIM J	PIN PLATING (NOTE 16)	PIN TYPE	PLASTIC MATERIAL
66506-238	2 X 5	B	.78/19.8	.72/18.3	.400/10.16	.675/17.15	30u"/0.76u Au OR GXT OVER 50u"/1.27u Ni	SQ	NOTE 2
-239							30u"/0.76u GXT WITH GOLD FLASH	SQ	
-240							120/200u" TIN LEAD	SQ	
-240LF	2 X 15		1.78/45.2	1.72/43.7	1.400/35.56	.675/17.15	100/160u" TIN	SQ	
-241	2 X 22		2.48/63.0	2.42/61.5	2.100/53.34	.105/2.67	15u"/0.38u Au OR GXT OVER 50u"/1.27u Ni	RD	
-242							30u"/0.76u Au OR GXT OVER 50u"/1.27u Ni	RD	
-243							30u"/0.76u GXT WITH GOLD FLASH	RD	
-244						.105/2.67	120/200u" TIN LEAD	SQ	
-244LF						.105/2.67	100/160u" TIN	SQ	
-245						.150/3.81	15u"/0.38u Au OR GXT OVER 50u"/1.27u Ni	RD	
-246							30u"/0.76u Au OR GXT OVER 50u"/1.27u Ni	RD	
-247							30u"/0.76u GXT WITH GOLD FLASH	RD	
-248						.150/3.81	120/200u" TIN LEAD	SQ	
-248LF						.150/3.81	100/160u" TIN	SQ	
-249						.675/17.15	15u"/0.38u Au OR GXT OVER 50u"/1.27u Ni		
-250							30u"/0.76u Au OR GXT OVER 50u"/1.27u Ni		
-251							30u"/0.76u GXT WITH GOLD FLASH		
-252	2 X 22		2.48/63.0	2.42/61.5	2.100/53.34	.675/17.15	120/200u" TIN LEAD		
66506-252LF	2 X 22		2.48/63.0	2.42/61.5	2.100/53.34	.675/17.15	100/160u" TIN		
66506-253	2 X 17	D	1.98/50.3	1.92/48.8	1.600/40.64	.105/2.67	15u"/0.38u Au OR GXT OVER 50u"/1.27u Ni	SQ	NOTE 2
66506-254	UNAVAILABLE								
THRU									
66506-279									
66506-280	2 X 10	D	1.28/32.5	1.22/31.0	.900/22.86	.105/2.67	120/200u" TIN LEAD	SQ	NOTE 2
66506-280LF	2 X 10	D	1.28/32.5	1.22/31.0	.900/22.86	.105/2.67	100/160u" TIN	SQ	NOTE 2
66506-281	UNAVAILABLE								
THRU									
66506-306									
66506-307	2 X 5	A	.78/19.8	.72/18.3	.400/10.16	.097/2.46	30u"/.76u GXT WITH GOLD FLASH	SQ	NOTE 2
-308	2 X 5	B	.78/19.8	.72/18.3	.400/10.16				
-309	2 X 7	C	.98/24.9	.92/23.4	.600/15.24				
-310	2 X 8	D	1.08/27.4	1.02/25.9	.700/17.78				
-311	2 X 10		1.28/32.5	1.22/31.0	.900/22.86				
-312	2 X 12		1.48/37.6	1.42/36.1	1.100/27.94				
-66506-313	2 X 13	D	1.58/40.1	1.52/38.6	1.200/30.48	.097/2.46	30u"/.76u GXT WITH GOLD FLASH	SQ	NOTE 2

mat'l. code				surface ISO 1302 <input checked="" type="checkbox"/>		tolerance ISO 406 ISO 1101		projection 		product family QUICKIE			
ltr		ecn no		dr		date		tolerances unless otherwise specified		title			
AJ								linear		HEADER QUICKIE SLIM LINE VERTICAL 4 WALL			
								angles		scale 1:1			
								dr		sheet 8 of 10			
								enr		size			
								chr		A3			
								appd		type Product Customer Drawing			
sheet index		revision sheet											



FCIconnect.com

Copyright FCI

PRODUCT NUMBER NOTE 8,9 & 12	SIZE	STYLE	DIM A	DIM B	DIM C	DIM J	PIN PLATING (NOTE 16)	PIN TYPE	PLASTIC MATERIAL
66506-314	2 X 15	D	1.78/45.2	1.72/43.7	1.400/35.56	.097/2.46	30u"/0.76u GXT WITH GOLD FLASH	SQ	NOTE 2
-315	2 X 17		1.98/50.3	1.92/48.8	1.600/40.64				
-316	2 X 20		2.28/57.9	2.22/56.4	1.900/48.26				
-317	2 X 22		2.48/63.0	2.42/61.5	2.100/53.34				
-318	2 X 25		2.78/70.6	2.72/69.1	2.400/60.96				
-319	2 X 30		3.28/83.3	3.22/81.8	2.900/73.66	.097/2.46	30u"/0.76u GXT WITH GOLD FLASH		
-320	2 X 8		1.08/27.4	1.02/25.9	.700/17.78	.105/2.67	30u"/0.76u Au OR GXT OVER 50u"/1.27u Ni		
-321	2 X 25		2.78/70.6	2.72/69.1	2.400/60.96		30u"/0.76u Au OR GXT OVER 50u"/1.27u Ni		
-322	2 X 8		1.08/27.4	1.02/25.9	.700/17.78		50u"/1.27u Au OVER 50u"/1.27u Ni		
-323	2 X 17		1.98/50.3	1.92/48.8	1.600/40.64	.105/2.67	50u"/1.27u Au OVER 50u"/1.27u Ni		NOTE 2
-324	2 X 25		2.78/70.6	2.72/69.1	2.400/60.96	.120/3.05	15u"/.38u GXT WITH GOLD FLASH		NOTE 6
-325	2 X 25		2.78/70.6	2.72/69.1	2.400/60.96	.150/3.81	30u"/0.76u GXT WITH GOLD FLASH		NOTE 2
-326	2 X 10		1.28/32.5	1.22/31.0	.900/22.86	.120/3.05	15u"/.38u GXT WITH GOLD FLASH		NOTE 7
-327	2 X 17		1.98/50.3	1.92/48.8	1.600/40.64	.120/3.05	15u"/.38u GXT WITH GOLD FLASH		NOTE 7
-328	2 X 25		2.78/70.6	2.72/69.1	2.400/60.96	.120/3.05	15u"/.38u GXT WITH GOLD FLASH		NOTE 7
-329	2 X 13		1.58/40.1	1.52/38.6	1.200/30.48	.150/3.81	15u"/.38u Au OR GXT OVER 50u"/1.27u Ni		NOTE 2
-330	2 X 25		2.78/70.6	2.72/69.1	2.400/60.96		15u"/.38u Au OR GXT OVER 50u"/1.27u Ni		
-331	2 X 30		3.28/83.3	3.22/81.8	2.900/73.66		15u"/.38u Au OR GXT OVER 50u"/1.27u Ni		
-332	2 X 17		1.98/50.3	1.92/48.8	1.600/40.64		15u"/.38u Au OR GXT OVER 50u"/1.27u Ni		
-333	2 X 20		2.28/57.9	2.22/56.4	1.900/48.26	.150/3.81	30u"/0.76u GXT WITH GOLD FLASH	SQ	
-334	2 X 10		1.28/32.5	1.22/31.0	.900/22.86	.105/2.67	15u"/.38u GXT WITH GOLD FLASH	RD	NOTE 2
-335	2 X 20		2.28/57.9	2.22/56.4	1.900/48.26	.105/2.67	30u"/0.76u GXT WITH GOLD FLASH	RD	NOTE 6
-336	2 X 22		2.48/63.0	2.42/61.5	2.100/53.34	.105/2.67	30u"/0.76u GXT WITH GOLD FLASH	RD	NOTE 6
-337	2 X 12	D	1.48/37.6	1.42/36.1	1.100/27.94	.150/3.81	15u"/.38u Au OR GXT OVER 50u"/1.27u Ni	SQ	NOTE 2
-338	2 X 5	A	.78/19.8	.72/18.3	.400/10.16	.150/3.81	15u"/.38u Au OR GXT OVER 50u"/1.27u Ni	SQ	NOTE 2
-339	2 X 4	A	.68/17.3	.62/15.8	.300/7.62	.105/2.67	15u"/.38u GXT WITH GOLD FLASH	SQ	NOTE 2
66506-340	2 X 10	D	1.28/32.5	1.22/31.0	.900/22.86	.150/3.81	30u"/0.76u Au OR GXT OVER 50u"/1.27u Ni	SQ	NOTE 2

mat'l. code				surface ISO 1302	tolerance ISO 406 ISO 1101	projection 	product family QUICKIE			
ltr	ecn	no	dr	date	tolerances unless otherwise specified		title			
AJ					angles	linear	INCH/MM			
							scale 1:1			
					dr	L. SANDERS	1/25/95	dwg no		
					enr	M. SMYK	1/25/95	sheet 9 of 10		
					chr	J. ROMBERGER	1/25/95	66506		
					appd	M. SMYK	1/25/95	type Product Customer Drawing		
sheet index	revision		sheet							



FCIconnect.com

Copyright FCI

PRODUCT NUMBER NOTE 8, 9 & 12	SIZE	STYLE	DIM A	DIM B	DIM C	DIM J	PIN PLATING (NOTE 16)	PIN TYPE	PLASTIC MATERIAL
66506-341	2 X 17	D	1.98/50.3	1.92/48.8	1.600/40.64	.150/3.81	30u"/.76u Au OR GXT 50u"/1.27u Ni	SQ	NOTE 2
-342	2 X 10	D	1.28/32.5	1.22/31.0	.900/22.86	.150/3.81	15u"/.38u GXT	SQ	NOTE 2
-343	2 X 17	D	1.98/50.3	1.92/48.8	1.600/40.64	.150/3.81	15u"/.38u GXT	SQ	NOTE 2
-344	U N A S S I G N E D								
-345	2 X 20	D	2.28/57.9	2.22/56.4	1.900/48.26	.120/3.05	15u"/.38u GXT WITH GOLD FLASH	SQ	NOTE 7
-346	U N A S S I G N E D								
-347	U N A S S I G N E D								
-348	2 X 5	A	.78/19.8	.72/18.3	.400/10.16	.105/2.67	15u/.38u GXT WITH GOLD FLASH	SQ	NOTE 2
-349	2 X 7	C	.98/24.9	.92/23.4	.600/15.24				
-350	2 X 8	D	1.08/27.4	1.02/25.9	.700/17.78				
-351	2 X 10		1.28/32.5	1.22/31.0	.900/22.86				
-352	2 X 13		1.58/40.1	1.52/38.6	1.200/30.48				
-353	2 X 17		1.98/50.3	1.92/48.8	1.600/40.64				
-354	2 X 20		2.28/57.9	2.22/56.4	1.900/48.26				
-355	2 X 22		2.48/63.0	2.42/61.5	2.100/53.34				
-356	2 X 25		2.78/70.6	2.72/69.1	2.400/60.96				
-357	2 X 30		3.28/83.3	3.22/81.8	2.900/73.66	.105/2.67	15u/.38u GXT WITH GOLD FLASH		
-358	2 X 10		1.28/32.5	1.22/31.0	.900/22.86	.150/3.81	30u"/.76u GXT /50u"/1.27u Ni		
-359	2 X 17		1.98/50.3	1.92/48.8	1.600/40.64	.150/3.81	30u"/.76u GXT /50u"/1.27u Ni		NOTE 2
-360	2 X 12	D	1.48/37.6	1.42/36.1	1.100/27.94	.295/7.49	15u/.38u GXT WITH GOLD FLASH		NOTE 7
-361	2 X 5	E	.78/19.8	.72/18.3	.400/10.16	.105/2.67	15u/.38u GXT WITH GOLD FLASH		
-362	2 X 5	A	.78/19.8	.72/18.3	.400/10.16	.105/2.67	30u/.76u GXT WITH GOLD FLASH		NOTE 2
-363	2 X 8	D	1.08/27.4	1.02/25.9	.700/17.78	.105/2.67			
-364	2 X 10	D	1.28/32.5	1.22/31.0	.900/22.86	.105/2.67			
-365	2 X 15	D	1.78/45.2	1.72/43.7	1.400/35.56	.105/2.67			
-366	2 X 17	D	1.98/50.3	1.92/48.8	1.600/40.64	.105/2.67			
-367	2 X 5	A	.78/19.8	.72/18.3	.400/10.16	.150/3.81			
-368	2 X 17	D	1.98/50.3	1.92/48.8	1.600/40.64	.150/3.81			
66506-369	2 X 25	D	2.78/70.6	2.72/69.1	2.400/60.96	.150/3.81	30u/.76u GXT WITH GOLD FLASH	SQ	NOTE 2

SEE NOTE 11
SEE NOTE 11

mat'l. code				surface ISO 1302 <input checked="" type="checkbox"/>		tolerance ISO 406 ISO 1101		projection 		product family QUICKIE			
ltr		ecn no		dr		date		tolerances unless otherwise specified		title			
AJ								linear		INCH/MM		66506	
								angles		scale 1:1		sheet 10 of 10	
								0.125				A3	
								dr		L. SANDERS		1/25/95	
								enr		M. SMYK		1/25/95	
								chr		J. ROMBERGER		1/25/95	
								appd		M. SMYK		1/25/95	
sheet index		revision sheet										type Product Customer Drawing	