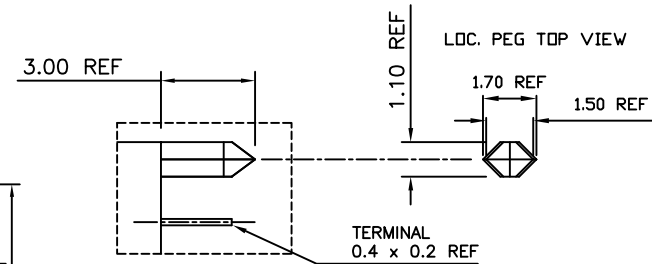
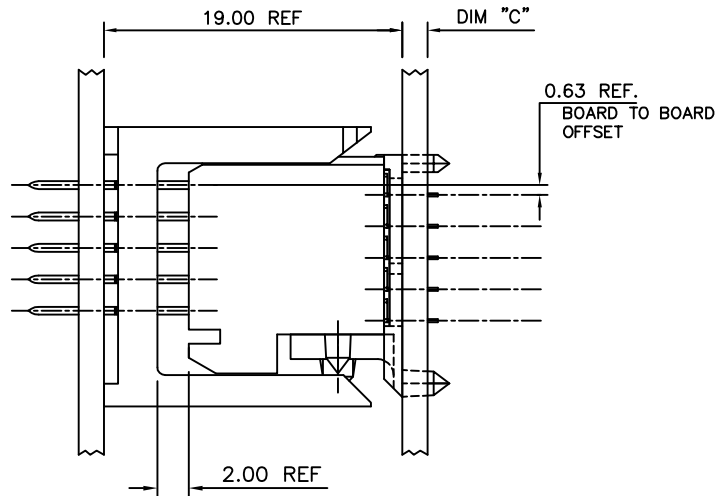
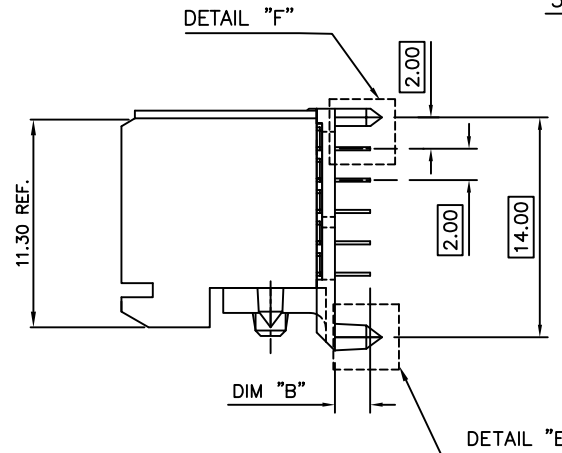
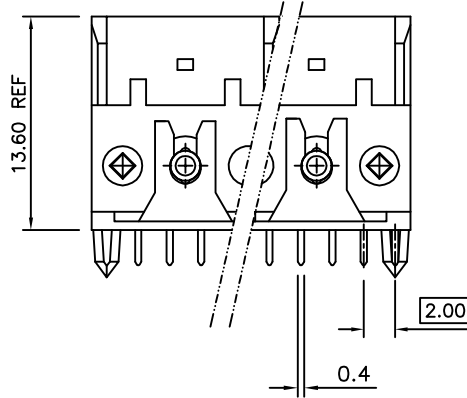
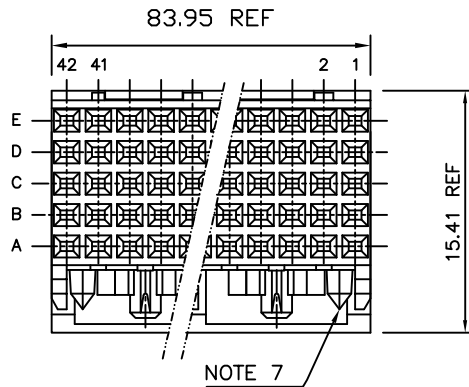


Tous droits strictement reserves. Reproduction ou communication a des tiers  
Interdite sous quelque forme que ce soit sans autorisation écrite du propriétaire.  
Propriete de c FCI. Droits de reproduction FCI.

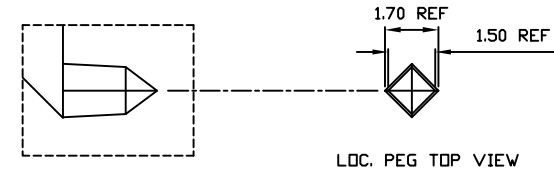


All rights strictly reserved. Reproduction or issue to third parties in any  
form whatever is not permitted without written authority from the proprietor.  
Property of FCI. Copyright FCI.

PRODUCT NUMBER	63731-XIY
PRODUCT NUMBER	63731-XIYLF



DETAIL "F"  
SCALE 2:1



DETAIL "E"  
SCALE 2:1

PLATING CONTACT AREA:	
DASH NR:	PERFORMANCE LEVEL
-1YY	TELCORDIA CO
-2YY	CUSTOMER SPECIAL
-9YY	TELCORDIA CO
-1YYLF	TELCORDIA CO
-2YYLF	CUSTOMER SPECIAL
-9YYLF	TELCORDIA CO

mat'l. code SEE NOTES				tolerances unless otherwise specified		CUSTOMER COPY		www.fciconnect.com	
ltr	ecn no	dr	date	linear	angles			projection	title
H	dg07-0173	Cenh	6/05/07			.XX±.13			VERT. SIG. RECEPT. ASS'Y
J	dg08-0171	TER	9/3/08			.XXX±.051			5 R., W/ WAFER-84mm
-	-	-	-			0° ±2°			
D	V01531	JWS	6/20/00	dr		M. FETROW	2/16/99	MM	product family METRAL(tm)
E	V01534	JRW	6/22/00	enr		R. DOUTRICH	2/16/99	scale	code
F	V03-0721	DAI	08/18/03	chr		R. DOUTRICH	2/16/99	1:1	size dwg no
G	V05-1101	JRV	12/5/05	appd		R. DOUTRICH	2/16/99		63731
sheet	revision	J	J	J					213
index	sheet	1	2	3					sheet
									1 of 3

cage code  
22526

ACAD

PDM: Rev:J

STATUS: Released


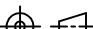

Printed: Nov 14, 2008



PRODUCT NUMBER
63731-X11
63731-X11LF

NOTES:

- CONNECTOR MATERIALS:  
HOUSING: LCP, 30% GLASS FILLED,  
UL 94-V0 COMPLIANT  
TERMINAL: PHOSPHOR BRONZE ALLOY
- PLATING ON TAIL:  
SOLDER-TO-BOARD TYPE  
63731-XYX IS 2-8um SnPb  
63731-XYXLF IS 2-8um Sn (LEAD FREE)
- PRODUCT SPECIFICATION:  
GS-12-002
- APPLICATION SPECIFICATIONS:  
BUS-20-061  
GS-20-001  
TA-941
- PRODUCT MARKING: (PART NUMBER & LOT CODE).
- INDICATED HOLES ARE UNPLATED.
- DIAMOND LOCATION PEG ARE ONLY EXISTED ON THE  
BOTH SIDES OF PRODUCT.
- TOP SURFACE OF PRESS BLOCK MAY EXTEND UP TO  
0.4MM HIGHER THAN HOUSING. THIS MAY AFFECT THE  
TAIL LENGTH BEFORE APPLICATION TO A BOARD.
- DIMENSION APPLIES TO BOTH PRESS-FIT AND  
SOLDER TAIL TERMINATIONS.
- THESE PRODUCTS WHERE THE PART NUMBER ENDS IN "LF" MEET  
THE EUROPEAN UNION DIRECTIVES AND OTHER COUNTRY REGULATIONS  
AS DESCRIBED IN GS-22-008.  
  
ALL PRODUCTS MANUFACTURED BEFORE APRIL 2006 WILL  
WITHSTAND EXPOSURE TO 240°C FOR 60 SECONDS IN A CONVECTION,  
INFAR-RED OR VAPOR PHASE REFLOW OVEN.  
  
ALL PRODUCTS MANUFACTURED AFTER MARCH 2006 WILL  
WITHSTAND EXPOSURE TO 260°C FOR 60 SECONDS IN A CONVECTION,  
INFAR-RED OR VAPOR PHASE REFLOW OVEN.
- FOR LEAD FREE PART NUMBERS ADD "LF" SUFFIX. EXAMPLE: 63731-XYXLF.

mat'l. code -----				tolerances unless otherwise specified				CUSTOMER COPY		  www.fciconnect.com		
ltr	ecn no	dr	date	linear	.X±.3				projection 	title VERT. SIG. RECEPT. ASS'Y 5 R., W/ WAFER-84mm		
J					.XX±.13							
					.XXX±.051							
				angles	0° ±2'				  scale 1:1	product family METRAL(tm)		code
				dr	M. FETROW	2/16/99	size dwg no			213		
				enrg	R. DOUTRICH	2/16/99	A4  63731			sheet 3 of -		
				chr	R. DOUTRICH	2/16/99						
				appd	R. DOUTRICH	2/16/99						
sheet index	revision sheet											

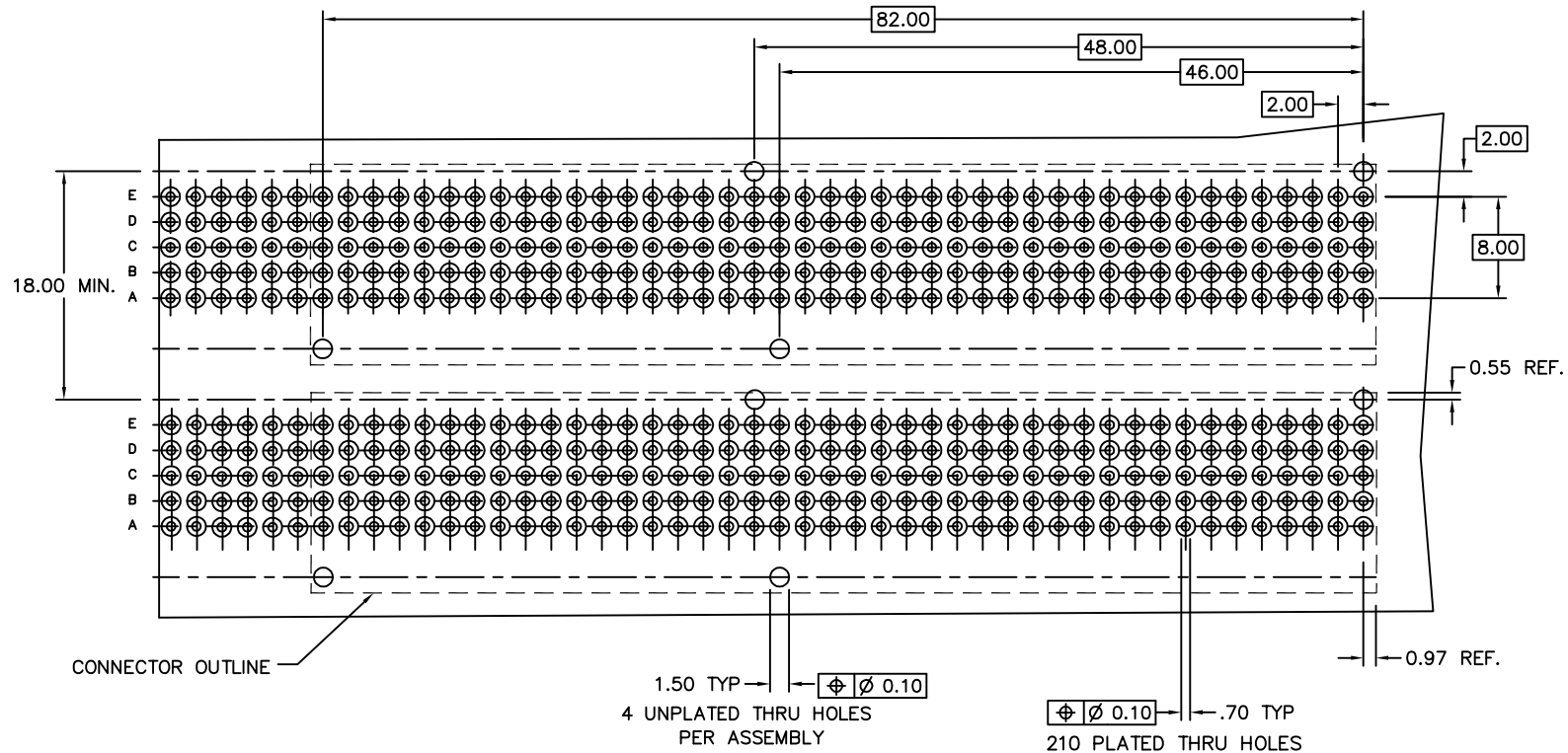
cage code  
22526

Tous droits strictement reserves. Reproduction ou communication a des tiers  
Interdite sous quelque forme que ce soit sans autorisation écrite du propriétaire.  
Propriete de c FCI. Droits de reproduction FCI.



All rights strictly reserved. Reproduction or issue to third parties in any  
form whatever is not permitted without written authority from the proprietor.  
Property of FCI. Copyright FCI.

PRODUCT NUMBER	DIM "B" TAIL LGTH.	DIM "C" PCB THK.
63731-X11	2.25 ±0.25	1.6
63731-X11LF	2.25 ±0.25	1.6



RECOMMENDED HOLE PATTERN  
63731-X1Y  
COMPONENT SIDE

mat'l. code				tolerances unless otherwise specified		CUSTOMER COPY	FCI		
ltr	ecn no	dr	date	linear	angular		www.fciconnect.com		
J				.XX±.13	0° ±2°	projection	title		
				.XXX±.051		MM	VERT. SIG. RECEPT. ASS'Y		
				dr	M. FETROW	2/16/99	5 R., W/ WAFER-84mm		
				enr	R. DOUTRICH	2/16/99	product family METRAL(tm)		
				chr	R. DOUTRICH	2/16/99	size dwg no		
				appd	R. DOUTRICH	2/16/99	A4 63731		
sheet index	revision sheet					scale 1:1	code 213		
							sheet 2 of -		

ACAD

PDM: Rev:J

STATUS: Released

Printed: Nov 14, 2008