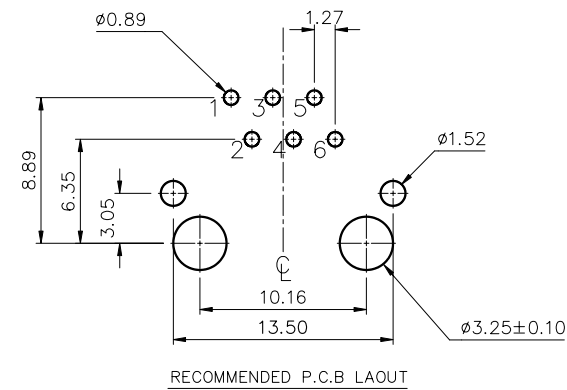
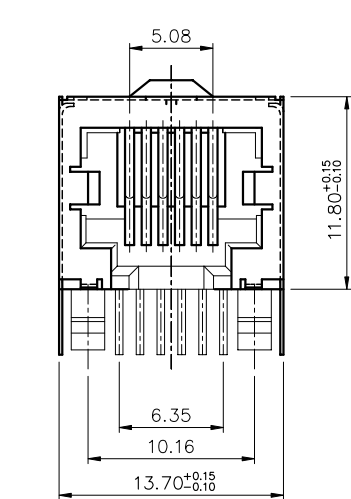
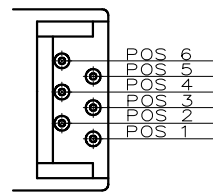
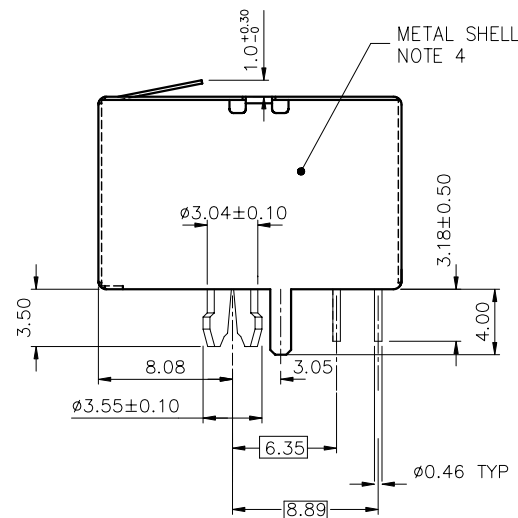
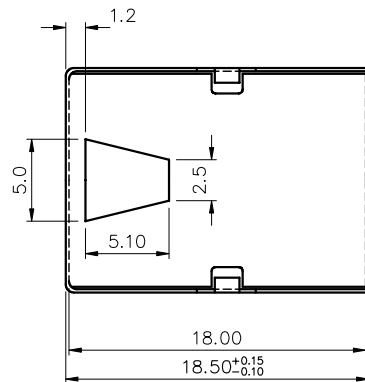


RECOMMENDED PANEL CUT-OUT



RECOMMENDED P.C.B. LAOUT



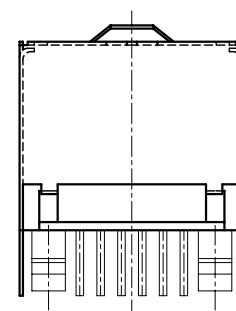
POS. NO. CONFIGURATION

PRODUCT NO	NUMBER OF POS.	LOADED POSITION	HSG COLOR	PLATING
61885-0661	6	ALL POS.	BLACK	304 " G.X.T.
61885-0641		2,3,4,5		
61885-0621		3,4		
61885-0661LF		ALL POS.		
61885-0641LF		2,3,4,5		
61885-0621LF		3,4		

LEAD FREE PRODUCT NO.

NOTES:

- RECOMMENDED P.C.B. THICKNESS 1.60 MM
- HOUSING MAT'L: NYLON 66, 25% GLASS REINFORCED, COLOR: SEE TABLE
- CONTACTS: PHOS BRONZE ALLOY UNS-C51000, Ø 0.460 ROUND WIRE, PLATING SEE TABLE.
- METAL SHELL MATERIAL: COPPER ALLOY, 0.20MM THICK. FINISH: FOR 61885-XXXX TIN-LEAD 100u" THICK . FOR 61885-XXXXLF PURE TIN 80u" THICK .
- PACKAGING PER GES-14-361, USING TUBE
- IF LF P/N THE PRODUCT MEETS EUROPEAN UNION DIRECTIVES AND OTHER COUNTRY REGULATIONS AS DESCRIBED IN GS-22-008
- IF LF P/N THE HOUSING WILL WITHSTAND EXPOSURE TO 260°C PEAK TEMPERATURE FOR 10 SECONDS IN A WAVE SOLDER APPLICATION WITH A 1.60mm MINIMUM THICK CIRCUIT BOARD
- IF LF P/N PACKAGING MEETS GS-14-920 SPECIFICATION



mat'l code				tolerance unless otherwise specified		CUSTOMER COPY		A FCI www.fclconnect.com	
rev.	ecn no.	dr	date	linear	.0 ± 0.25	projection	title	LOW PROFILE PCB III 6 POS MOD JACK, FULLY SHIELDED	
A	T70292	C L	10/08/97		.00 ± 0.13				
B	T80057	CATHY L	02/11/98		.000± 0.05			product family MOD JACK code TWN	
C	T80510	M W	11/18/98	angles	± 2°				
D	T03-0443	W L	10/06/03	dr	C M HSU	03/27/97	unit	size dwg no. 61885	
E	N04-0125	YS	12/15/04	enrg	TONY CHIEN	03/27/97	mm/inch		
				chr	TONY CHIEN	03/27/97	scale	A3 1 OF 1	
				appd	JENN TSAO	03/27/97	3 : 1		
sheet	revision	E							
index	sheet	1							