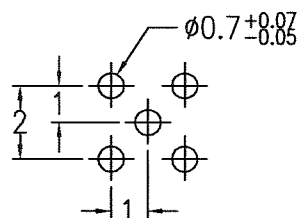
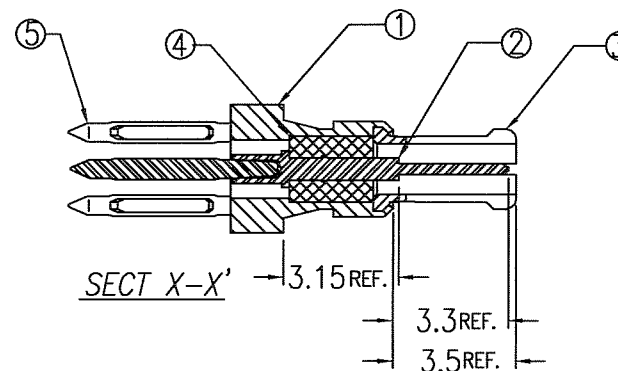


PRODUCT NUMBER

61428-001

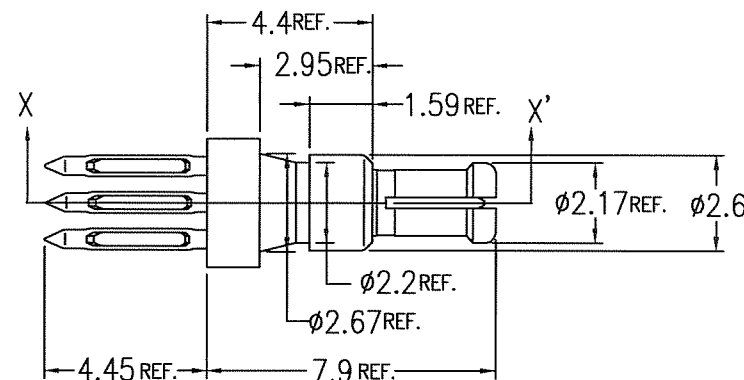
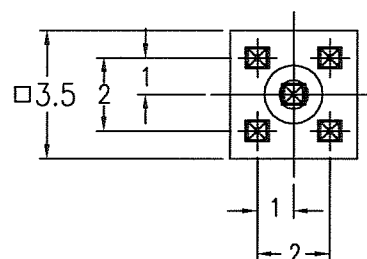
61428-001LF

No.	DESCRIPTION	MATERIAL	FINISH	
			61428-001	61428-001LF
1	SHELL	BRASS	Au 0.05um MIN.	Au 0.05um MIN.
2	INNER CONTACT	BERYLLIUM COPPER	Au 1.27um MIN.	Au 1.27um MIN.
3	OUTER CONTACT	BERYLLIUM COPPER	Au 1.27um MIN.	Au 1.27um MIN.
4	INSULATOR	PTFE		
5	P.F. MALE PIN	PHOSPHER BRONZE	SnPb 0.50-1.5um	Sn 0.50-1.5um



RECOMMENDED PCB LAYOUT

(TOLERANCES UNLESS OTHERWISE SPECIFIED ± 0.1)



NOTE

1. FOR LEAD FREE P/N, THE PRODUCT MEET EUROPEAN UNION DIRECTIVES AND OTHER COUNTRY REGULATIONS AS DESCRIBED IN GS-22-008
2. THE HOUSING WILL WITHSTAND EXPOSURE TO 260°C PEAK TEMPERATURE FOR 10 SECONDS IN A CONVECTION, INFRA-RED OR VAPOR PHASE REFLOW OVEN

mat'l. code				surface	tolerance	projection	product family	CODE
---				ISO 1302	ISO 406	ISO 1101	METRAL	JP
ltr	description	ecn no	dr	date	tolerances unless otherwise specified	angles	linear	title
A	RELEASED	J80432	YK	10/26/'98	0.X	± 0.2		METRAL MINI COAX
B	REVISED	J10260	YK	3/30/'01	0.XX	± 0.2		MALE PRESS-FIT TO B.P.
C	REVISED	J05-0664	T.S	10/21/'05	0' \pm 3'	0.XXX	± 0.2	scale 5:1
D	REVISED	J07-0030	SJ	1/18/'07	dr	T.SUKEKAWA	10/21/'05	dwg no
					enr	S.OKUDAIRA	1/18/'07	sheet 1 of 1
					chr	R. Shouji	1/18/'07	size
					appd	S. Okudaira	1/18/'07	A4
sheet index	revision sheet	D	1					type
								Customer Drawing
								Rev. D