

SEE TABLE I



DETAIL A

③	EJECT MECH ASS'Y	94307-10G* SEE TABLE I J
②	EJECT MECH ASS'Y	88644-00G* SEE TABLE I J
①	HDR ASS'Y	92821-000/000LF
DESCRIPTION		P/N



1. EJECT FORCE : 3.5 Kg MAX.
2. EJECT TRAVEL: 8.0mm

3.1 PART (A) (HEADER ASS'Y)

PLASTIC :HOUSING ...LCP UL94V-0 BLACK
:LOCATOR ...G.F. 6/6 NYLON UL94-V0 BLACK
PIN :PHOSPHOR BRONZE

PIN • PHOSPHOR BRONZE

3.2 PART (B) AND (C) (EJECT MECHANISM ASS'Y)
PLASTIC :GUIDE:POLYPHTHARAMID UL94V-0 BLACK
:PUSH ROD:POLYPHTHARAMID UL94V-0 BLACK

EMI CONTACT:PHOSPHOR BRONZE

4. FINISH (PIN)

UNDER PLATING : 0.5µm MIN. NI
CONTACT AREA : 0.1µm MIN. GOLD OVER 0.5µm MIN. Pd-NI
SOLDER TAIL(TIN LEAD OPTION): 2.5µm MIN. Sn-Pb
SOLDER TAIL(LEAD FREE OPTION): 2.5µm MIN. PURE TIN

5. DIM "X"	1.0E+01	3.5E+01	5.0E+01
------------	---------	---------	---------

4.25±0.1	3.5±0.1	5.0±0.1
OTHERS	36,67	1,17,34,35,51,68

⑤ RECOMMENDED DIAMETER IS Ø1.0, FOR PROCESSES USING PASTE REFLOW, HOLE MAYBE AS SMALL AS Ø0.79.

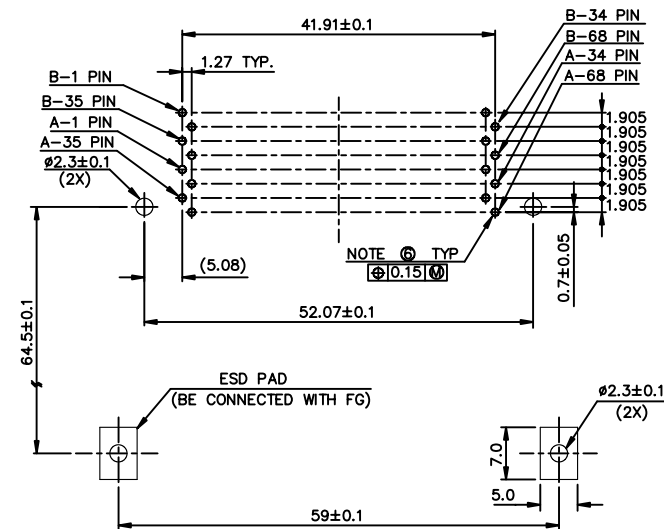
7. IF LEAD FREE P.N.THE HOUSING WILL WITHSTAND EXPOSURE TO 260°C PEAK TEMPERATURE FOR 10 SECONDS IN A WAVE SOLDER APPLICATION WITH A 1.00MM MINIMUM THICK CIRCUIT BOARD.

8. IF LEAD FREE P/N THE PRODUCT MEETS EUROPEAN UNION DIRECTIVES AND OTHER COUNTRY REGULATIONS AS DISCRIBLED IN GS-22-008



9. LEAD FREE P/N PACKAGING MEETS GS-14-920 SPECIFICATION

10. TABLE I

*	PUSH ROD COLOR
A	BLACK
H	NATURAL



4 CARD INSERTION DIRECTION

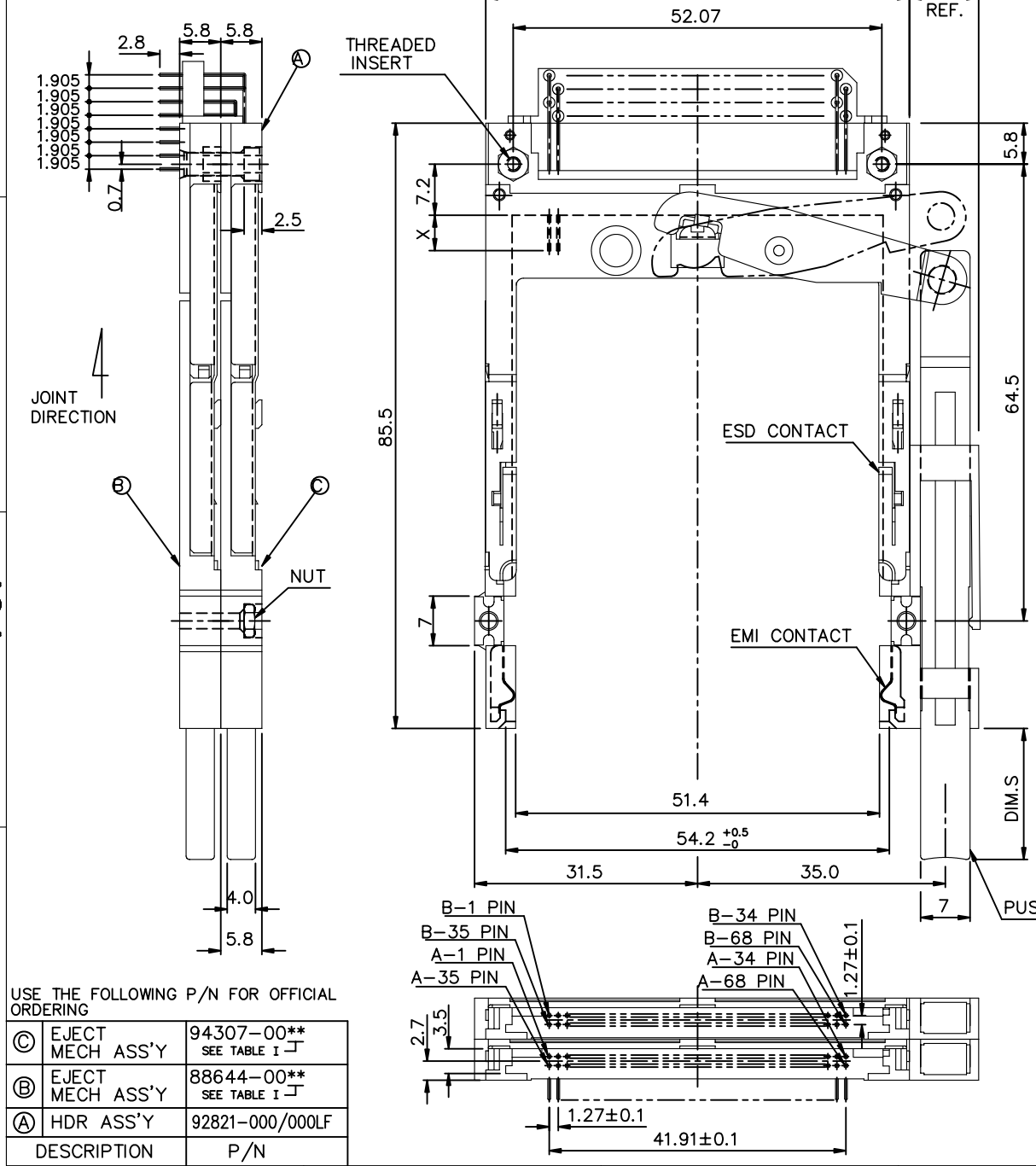
mat'l code				tolerance unless otherwise specified				CUSTOMER		ELECTRONICS	
rev. ecn no. dr date				linear		±0.30		COPY			
A	T55051	W	L	08/02/95	linear				projection	title	
B	T55066	W	L	08/25/95						68P DOUBLE EJECTOR HEADER	
C	T65007	W	L	01/13/96	angles		± 2°			ASS'Y FOR TYPE 1/2/3	
D	T60355	W	L	08/02/96	dr	WENDY CHEN	08/02/95	unit	product family : PCMCIA		code
E	T10067	W	L	03/05/01	enrg	JOSEPH HSIA	08/02/95	mm/inch	size	dwg no.	TWN
F	T10092	W	L	03/14/01	chr	JOSEPH HSIA	08/02/95	scale			sheet
G	N05-0059	W	B	03/03/05	apdd	JENN TSAO	08/02/95	1.5:1	A3	61150	1 OF 6
sheet	revision	G	G	G	G	G	G				
index	sheet	1	2	3	4	5	6				

Tous droits strictement réservés. Reproduction ou communication à des tiers sans autorisation écrite du propriétaire.
Property of c BERG ELECTRONICS.
Droits de reproduction BERG ELECTRONICS by

FCI

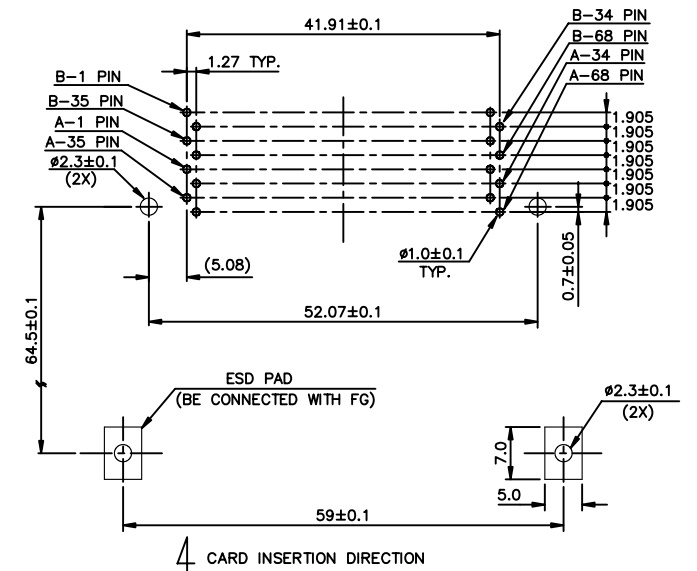
All rights strictly reserved. Reproduction or issue to third parties in any form without written authority from the proprietor.
Property of c BERG ELECTRONICS.
Copyright BERG ELECTRONICS by

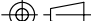
PRODUCT NO.
61150-200**/200**LF
SEE TABLE I



- NOTES:
- EJECT FORCE : 3.5 Kg MAX.
 - EJECT TRAVEL: 8.0mm
 - MATERIAL
 - 3.1 PART Ⓐ (HEADER ASS'Y)
PLASTIC : HOUSING ...LCP UL94V-0 BLACK
LOCATOR : G.F. 6/6 NYLON UL94-V0 BLACK
PIN : PHOSPHOR BRONZE
 - 3.2 PART Ⓑ AND Ⓒ (EJECT MECHANISM ASS'Y)
PLASTIC : GUIDE: POLYPHTHARAMID UL94V-0 BLACK
PUSH ROD: POLYPHTHARAMID UL94V-0 BLACK
PLATE : STAINLESS
EMI CONTACT: PHOSPHOR BRONZE
 4. FINISH (PIN)
UNDER PLATING : 0.5µm MIN. Ni
CONTACT AREA : 0.1µm MIN. GOLD OVER 0.5µm MIN. Pd-Ni
SOLDER TAIL (TIN LEAD OPTION): 2.5µm MIN. Sn-Pb
SOLDER TAIL (LEAD FREE OPTION): 2.5µm MIN. PURE TIN
 5. DIM "X"
 6. IF LEAD FREE P.N. THE HOUSING WILL WITHSTAND EXPOSURE TO 260°C PEAK TEMPERATURE FOR 10 SECONDS IN A WAVE SOLDER APPLICATION WITH A 1.00MM MINIMUM THICK CIRCUIT BOARD.
 7. LEAD FREE P/N PACKAGING MEETS GS-14-920 SPECIFICATION
 8. TABLE I

**	DIM.S	PUSH ROD COLOR
CA	13.0	BLACK
CH	13.0	NATURAL
DA	15.2	BLACK
DH	15.2	NATURAL
EA	18.5	BLACK
EH	18.5	NATURAL
FA	21.0	BLACK
FH	21.0	NATURAL



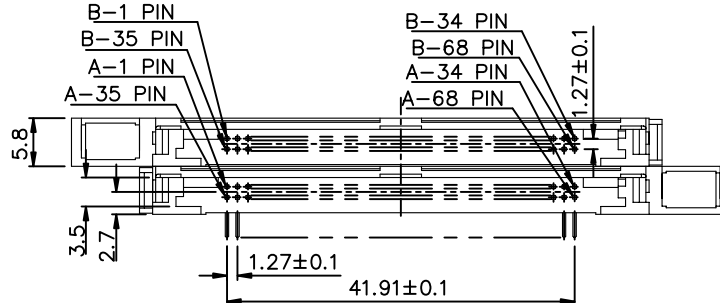
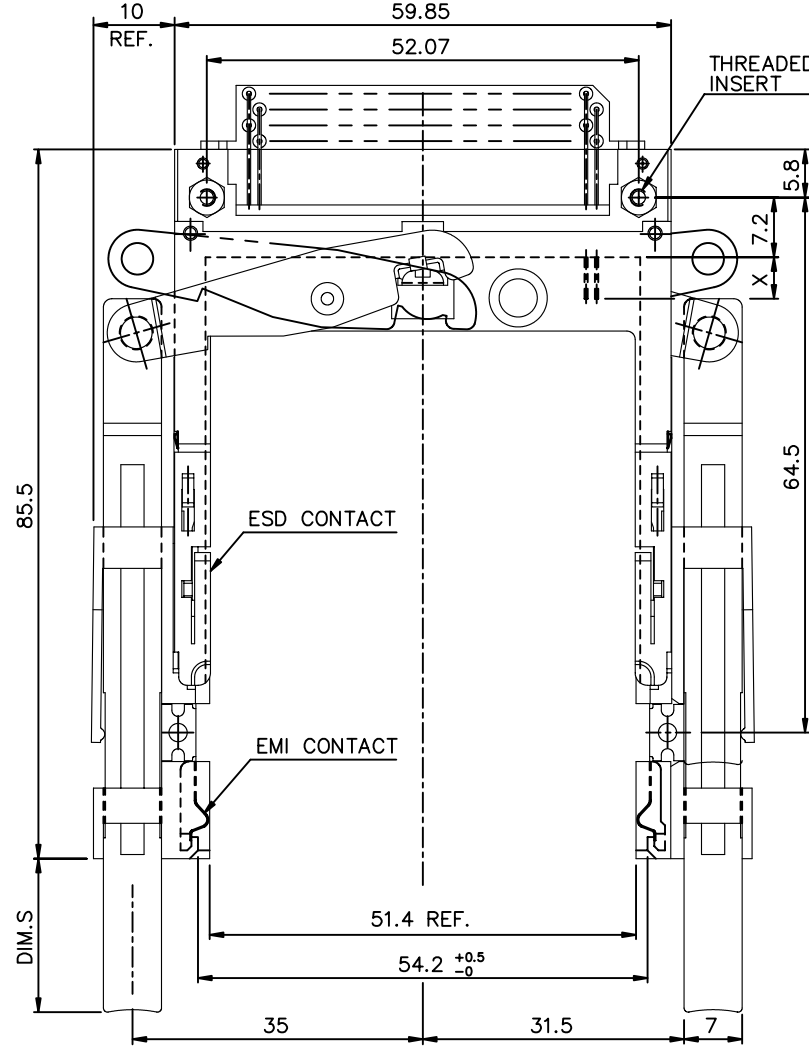
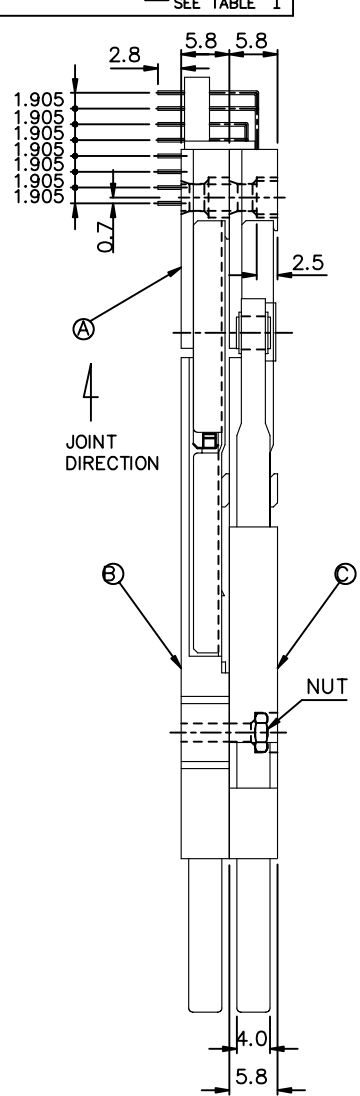
mat'l code					tolerance unless otherwise specified		CUSTOMER COPY		<div><div>A</div><div>FCI</div></div> <div>www.fciconnect.com</div>	
rev.	ecn	no.	dr	date	linear	±0.30	projection 	title		
G								68P DOUBLE EJECTOR HEADER ASS'Y FOR TYPE 1/2/3		
					angles	±2°				
			dr	WENDY CHEN	01/10/96	unit	product family		PCMCIA	code
			enrg	JOSEPH HSIA	01/10/96	mm/inch	size		dwg no.	TWN
			chr	JOSEPH HSIA	01/10/96	scale	A3		61150	sheet
			appd	JENN TSAO	01/10/96	1.5: 1				2 OF
sheet	revision									
index	sheet									

Tous droits strictement réservés. Reproduction ou communication à des tiers int
sous quelque forme que ce soit sans autorisation écrite du propriétaire.
Property of c BERG ELECTRONICS.
Droits de reproduction BERG ELECTRONICS by

FCI

All rights strictly reserved. Reproduction or issue to third parties in any for
whenever is not permitted without written authority from the proprietor.
Property of c BERG ELECTRONICS.
Copyright BERG ELECTRONICS by

PRODUCT NO.
61150-100**/100**LF
SEE TABLE I



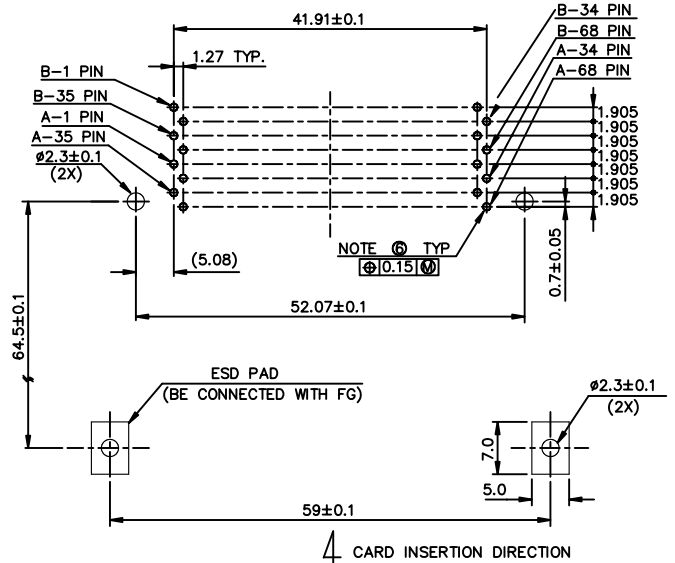
USE THE FOLLOWING P/N FOR OFFICIAL ORDERING

Ⓒ	EJECT MECH ASS'Y	94307-10** SEE TABLE I
Ⓑ	EJECT MECH ASS'Y	88644-00** SEE TABLE I
Ⓐ	HDR ASS'Y	92821-000/000LF
	DESCRIPTION	P/N

- NOTES:
- EJECT FORCE : 3.5 Kg MAX.
 - EJECT TRAVEL: 8.0mm
 - MATERIAL
 - PART ④ (HEADER ASS'Y)
PLASTIC : HOUSING ...LCP UL94V-0 BLACK
LOCATOR ...G.F. 6/6 NYLON UL94-VO BLACK
PIN : PHOSPHOR BRONZE
 - PART ⑤ AND ⑥ (EJECT MECHANISM ASS'Y)
PLASTIC : GUIDE: POLYPHTHARAMID UL94V-0 BLACK
PUSH ROD: POLYPHTHARAMID UL94V-0 BLACK
PLATE : STAINLESS
EMI CONTACT: PHOSPHOR BRONZE
 - FINISH (PIN)
UNDER PLATING : 0.5µm MIN. NI
CONTACT AREA : 0.1µm MIN. GOLD OVER 0.5µm MIN. Pd-NI
SOLDER TAIL (TIN LEAD OPTION): 2.5µm MIN. Sn-Pb
SOLDER TAIL (LEAD FREE OPTION): 2.5µm MIN. PURE TIN
 - DIM "X"
 - RECOMMENDED DIAMETER IS Ø1.0, FOR PROCESSES USING PASTE REFLOW. HOLE MAYBE AS SMALL AS Ø0.79.
 - IF LEAD FREE P/N THE HOUSING WILL WITHSTAND EXPOSURE TO 260°C PEAK TEMPERATURE FOR 10 SECONDS IN A WAVE SOLDER APPLICATION WITH A 1.00MM MINIMUM THICK CIRCUIT BOARD.
 - LEAD FREE P/N PACKAGING MEETS GS-14-920 SPECIFICATION

DIM "X"	4.25±0.1	3.5±0.1	5.0±0.1
OTHERS	36,67	1,17,34,35,51,68	

** DIM. S	PUSH ROD COLOR
CA 13.0	BLACK
CH 13.0	NATURAL
DA 15.2	BLACK
DH 15.2	NATURAL
EA 18.5	BLACK
EH 18.5	NATURAL
FA 21.0	BLACK
FH 21.0	NATURAL



mat'l code				tolerance unless otherwise specified				CUSTOMER		A FCI	
rev. ecn no. dr date				linear ±0.30				COPY		www.fciconnect.com	
D				angles ± 2°				projection		title	
				dr WENDY CHEN 09/12/96				unit		88P DOUBLE EJECTOR HEADER ASS'Y FOR TYPE 1/2/3	
				enr JOSEPH HSIA 09/12/96				mm/inch		product family PCMCIA	
				chr JOSEPH HSIA 09/12/96				scale		size dwg no.	
				appd JENN TSAO 09/12/96				1.5:1		A3 61150	
sheet		revision		index		sheet				code	
										TWN	
										sheet 3 OF	

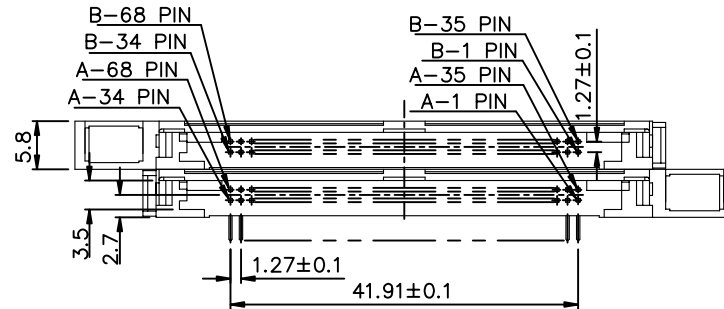
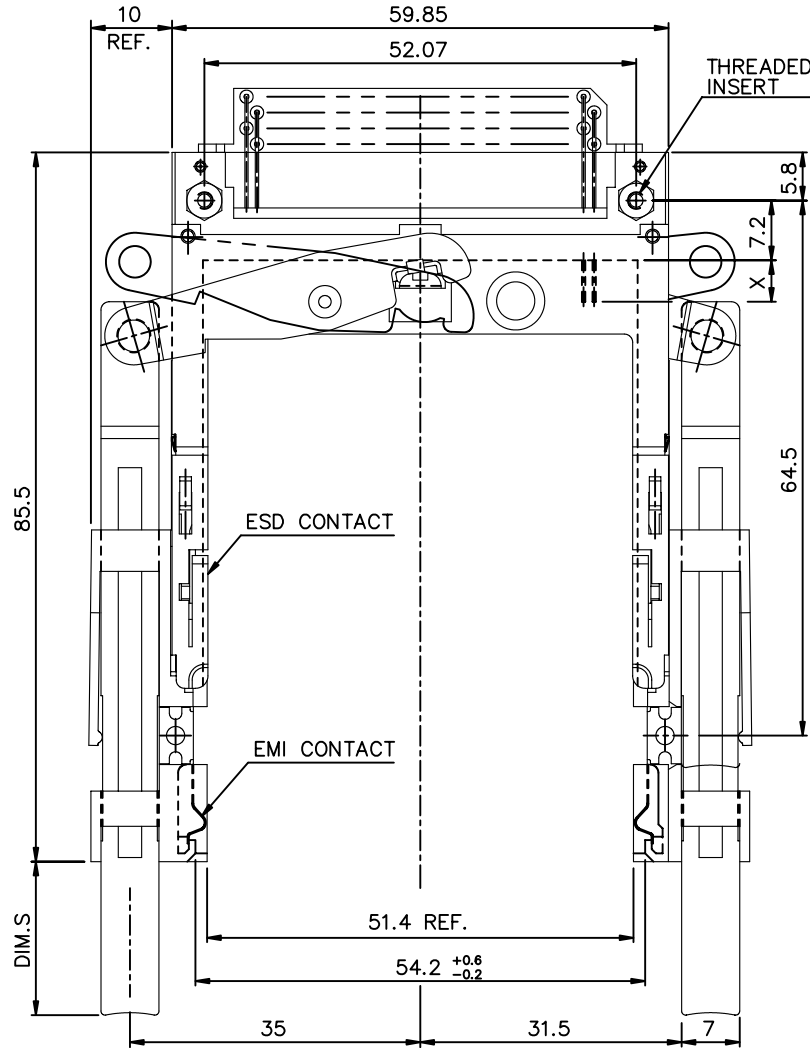
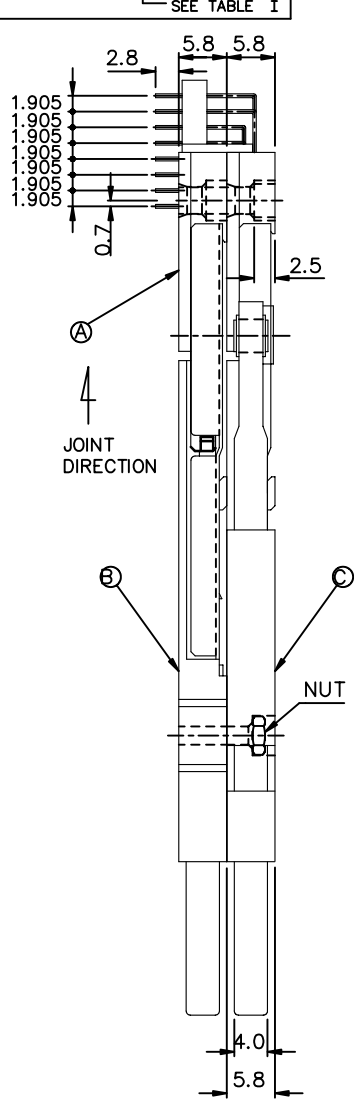
Tous droits strictement réservés. Reproduction ou communication à des tiers int
sous quelque forme que ce soit sans autorisation écrite du propriétaire.
Propriété de c BERG ELECTRONICS.
Droits de reproduction BERG ELECTRONICS by



All rights strictly reserved. Reproduction or issue to third parties in any for
whenever is not permitted without written authority from the proprietor.
Property of c BERG ELECTRONICS.
Copyright BERG ELECTRONICS by

D

PRODUCT NO.
61150-600**/600**LF
SEE TABLE I



USE THE FOLLOWING P/N FOR OFFICIAL ORDERING

Ⓒ	EJECT MECH ASS'Y	94307-10** SEE TABLE I
Ⓑ	EJECT MECH ASS'Y	88644-00** SEE TABLE I
Ⓐ	HDR ASS'Y	92821-500/500LF
	DESCRIPTION	P/N

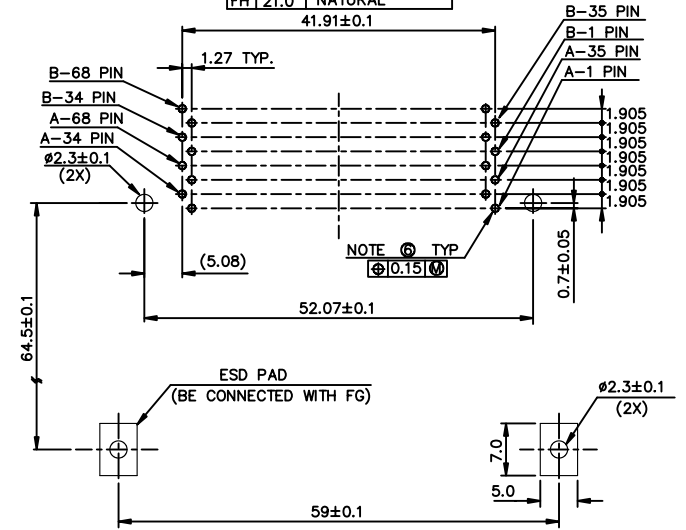
NOTES:

- EJECT FORCE : 3.5 Kg MAX.
- EJECT TRAVEL: 8.0mm
- MATERIAL
 - PART Ⓐ (HEADER ASS'Y)
PLASTIC : HOUSING ...LCP UL94V-O BLACK
: LOCATOR ...G.F. 6/6 NYLON UL94-VO BLACK
PIN : COPPER ALLOY
 - PART Ⓑ AND Ⓒ (EJECT MECHANISM ASS'Y)
PLASTIC : GUIDE: POLYPHTHARAMID UL94V-O BLACK
: PUSH ROD: POLYPHTHARAMID UL94V-O BLACK
PLATE : STAINLESS
EMI CONTACT: PHOSPHOR BRONZE
- FINISH (PIN)
UNDER PLATING : 0.5µm MIN. Ni
CONTACT AREA : 0.1µm MIN. GOLD OVER 0.5µm MIN. Pd-Ni
SOLDER TAIL(TIN LEAD OPTION): 2.5µm MIN. Sn-Pb
SOLDER TAIL(LEAD FREE OPTION): 2.5µm MIN. PURE TIN
- DIM "X"

4.25±0.1	3.5±0.1	5.0±0.1
OTHERS	36,67	1,17,34,35,51,68
- Ⓓ RECOMMENDED DIAMETER IS Ø1.0, FOR PROCESSES USING PASTE REFLOW, HOLE MAYBE AS SMALL AS Ø0.79.
- IF LEAD FREE P.N.THE HOUSING WILL WITHSTAND EXPOSURE TO 260°C PEAK TEMPERATURE FOR 10 SECONDS IN A WAVE SOLDER APPLICATION WITH A 1.00MM MINIMUM THICK CIRCUIT BOARD.
- LEAD FREE P/N PACKAGING MEETS GS-14-920 SPECIFICATION

9. TABLE I

** DIM.S	PUSH ROD COLOR
CA 13.0	BLACK
CH 13.0	NATURAL
DA 15.2	BLACK
DH 15.2	NATURAL
EA 18.5	BLACK
EH 18.5	NATURAL
FA 21.0	BLACK
FH 21.0	NATURAL



4 CARD INSERTION DIRECTION

mat'l code				tolerance unless otherwise specified		CUSTOMER		ELECTRONICS	
rev. ecn no. dr date				linear ±0.30		COPY		FCI	
G				angles ± 2°		projection		title	
				dr WENDY CHEN 12/20/00		unit		88P DOUBLE EJECTOR HEADER ASS'Y FOR TYPE 1/2/3	
				enr LEIF SHEN 12/20/00		mm/inch		product family : PCMCIA	
				chr JOSEPH HSIA 12/20/00		scale		size dwg no.	
				appd JOSEPH HSIA 12/20/00		1.5:1		A3 61150	
sheet revision								code	
index sheet								TWN	
								sheet	
								4 of	

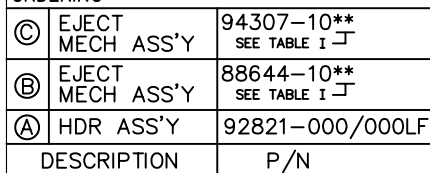
PDM: Rev:G

STATUS: Released

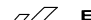

Printed: Sep 28, 2007

D

SEE TABLE I



Rev. 3 STATUS: Released Filed: Sep

mat'l code					tolerance unless otherwise specified		CUSTOMER COPY		 ELECTRONICS	
rev.	ecn	no.	dr	date	linear	±0.30	projection 	title 68P DOUBLE EJECTOR HEADER ASS'Y FOR TYPE 1/2/3		
G										
					angles	±2°				
			dr	WENDY CHEN		03/05/01	unit	product family : PCMCIA		code
			enrg	MINERVA WANG		03/05/01	mm/inch	size		TWN
			chr	JOSEPH HSIA		03/05/01	scale	dwg no.		sheet
			apdd	JOSEPH HSIA		03/05/01	1.5:1	A3		5 of
sheet	revision									
index	sheet									

All rights strictly reserved. Reproduction or issue to third parties in any form or by any means, electronic or mechanical, including photocopying, recording, or by any information storage and retrieval system, is prohibited without written permission from the proprietor.

Property of c. BERG ELECTRONICS.
Copyright BERG ELECTRONICS by



Tous droits strictement réservés. Reproduction ou communication à des tiers interdite sans autorisation écrite du propriétaire.
All rights strictly reserved. Reproduction or issue to third parties in any form without written authority from the proprietor.
Copyright © 2007 FCI Electronics Inc. All rights reserved.

