





DESCRIPTION : ABOVE PCB, DECK AND PUSH ROD LOCATION ARE AS VIEW BY USER.

PRODUCT NO.	PUSH ROD LOCATION		STAND-OFF HEIGHT	CLOSEST TO PCB	FARTHEST FROM PCB	MATING RECEPTACLE ㉔	P.C.B SIDE	RECOMMENDED P.C.B LAYOUT (SEE PAGE 6&7)	MOUNT STYLE TO PCB AND PUSH ROD SIDE		
	DECK CLOSEST TO PCB	DECK FARTHEST TO PCB		EJ HDR ASS'Y ㉑	EJ HDR ASS'Y ㉒						
㉑ 61124-*****	200CA	RIGHT	RIGHT	0.0	61126-002CA	61125-005CA	RECEPTACLE PART NO. 91931-31169	ABOVE	LAYOUT 1		
	220CA	RIGHT	RIGHT	2.2	61125-020CA	61125-025CA			LAYOUT 2		
	240CA	RIGHT	RIGHT	4.3	61125-040CA	61125-045CA			LAYOUT 2		
	250CA	RIGHT	RIGHT	5.0	61125-050CA	61125-055CA			LAYOUT 2		
	220CAC	RIGHT	RIGHT	2.2	61125-020CAC	61125-025CAC			LAYOUT 2		
	240CAC	RIGHT	RIGHT	4.3	61125-040CAC	61125-045CAC			LAYOUT 2		
	250CAC	RIGHT	RIGHT	5.0	61125-050CAC	61125-055CAC			LAYOUT 2		
	300CA	LEFT	LEFT	0.0	61126-102CA	61125-105CA			LAYOUT 1		
	320CA	LEFT	LEFT	2.2	61125-120CA	61125-125CA			LAYOUT 2		
	340CA	LEFT	LEFT	4.3	61125-140CA	61125-145CA			LAYOUT 2		
	350CA	LEFT	LEFT	5.0	61125-150CA	61125-155CA			LAYOUT 2		
	700CA	RIGHT	RIGHT	0.0	61126-502CA	61125-505CA		RECEPTACLE PART NO. 91931-31169	BELOW	LAYOUT 3	
	720CA	RIGHT	RIGHT	2.2	61125-520CA	61125-525CA				LAYOUT 4	
	740CA	RIGHT	RIGHT	4.3	61125-540CA	61125-545CA				LAYOUT 4	
	750CA	RIGHT	RIGHT	5.0	61125-550CA	61125-555CA				LAYOUT 4	
	800CA	LEFT	LEFT	0.0	61126-602CA	61125-605CA				LAYOUT 3	
	820CA	LEFT	LEFT	2.2	61125-620CA	61125-625CA				LAYOUT 4	
	840CA	LEFT	LEFT	4.3	61125-640CA	61125-645CA				LAYOUT 4	
	850CA	LEFT	LEFT	5.0	61125-650CA	61125-655CA				LAYOUT 4	

OR

ORDERING INFORMATION




ORDERING INFORMATION		
NAME	PART NO.	Q'TY
Ⓐ EJECT HEADER ASS'Y	61124-*****	1
Ⓓ MATING RECEPTACLE	91931-31169	2

ORDERING INFORMATION		
NAME	PART NO.	Q'TY
Ⓑ DECK CLOSEST TO PCB	61125-*****	1
Ⓒ DECK FARTHEST FROM PCB	61125-*****	1
Ⓓ MATING RECEPTACLE	91931-31169	2

OR

ORDERING INFORMATION

ORDERING INFORMATION		
NAME	PART NO.	Q'TY
Ⓑ DECK CLOSEST TO PCB	61126-*****	1
Ⓒ DECK FARTHEST FROM PCB	61125-*****	1
Ⓓ MATING RECEPTACLE	91931-31169	1

mat'l. code				surface ISO 1302		tolerance ISO 406 ISO 1101		projection 		product family			
ltr	ecn no	dr	date	tolerances unless otherwise specified					title EJECTOR HEADER ASS'Y 3.3V SMT, TYPE 1/2/3				
C	T03-0216	W	06/09/03	angles		linear							
D	N05-0059	W	03/03/05			± 0.30		scale 1:1	dwg no 61124				
E	N05-0140	W	05/31/05	±2'									
F	N05-0217	WB	07/25/05	dr	WENDY CHEN		07/06/95		sheet 1 of 8 size A4				
G	N08-0169	MZ	08/13/07	enr	L.W. LU		07/06/95						
				chr	JOSEPH HSIA		07/06/95						
				appd	JENN TSAO								
sheet index	revision sheet	G	G	G	G	G	G	G	G				
		1	2	3	4	5	6	7	8				

DESCRIPTION : ABOVE PCB, DECK AND PUSH ROD LOCATION ARE AS VIEW BY USER.

PRODUCT NO.	PUSH ROD LOCATION		STAND-OFF	CLOSEST TO PCB	FARTHEST FROM PCB	MATING RECEPTACLE	P.C.B SIDE	RECOMMENDED P.C.B LAYOUT (SEE PAGE 6&7)	MOUNT STYLE TO PCB AND PUSH ROD SIDE
① 61124-****	DECK CLOSEST TO PCB	DECK FARTHEST TO PCB	HEIGHT	EJ HDR ASS'Y ②	EJ HDR ASS'Y ③	④			
200CALF	RIGHT	RIGHT	0.0	61126-002CALF	61125-005CALF	RECEPTACLE PART NO. 91931-31169LF	ABOVE	LAYOUT 1	
220CALF	RIGHT	RIGHT	2.2	61125-020CALF	61125-025CALF			LAYOUT 2	
240CALF	RIGHT	RIGHT	4.3	61125-040CALF	61125-045CALF			LAYOUT 2	
250CALF	RIGHT	RIGHT	5.0	61125-050CALF	61125-055CALF			LAYOUT 2	
220CACL	RIGHT	RIGHT	2.2	61125-020CACL	61125-025CACL			LAYOUT 2	
240CACL	RIGHT	RIGHT	4.3	61125-040CACL	61125-045CACL			LAYOUT 2	
250CACL	RIGHT	RIGHT	5.0	61125-050CACL	61125-055CACL			LAYOUT 2	
251CACL	LEFT	RIGHT	5.0	61125-050CACL	61125-155CACL	RECEPTACLE PART NO. 91931-31169LF	BELOW	LAYOUT 2	
300CALF	LEFT	LEFT	0.0	61126-102CALF	61125-105CA			LAYOUT 1	
320CALF	LEFT	LEFT	2.2	61125-120CALF	61125-125CA			LAYOUT 2	
340CALF	LEFT	LEFT	4.3	61125-140CALF	61125-145CA			LAYOUT 2	
350CALF	LEFT	LEFT	5.0	61125-150CALF	61125-155CA			LAYOUT 2	
700CALF	RIGHT	RIGHT	0.0	61126-502CALF	61125-505CA			LAYOUT 3	
720CALF	RIGHT	RIGHT	2.2	61125-520CALF	61125-525CA			LAYOUT 4	
740CALF	RIGHT	RIGHT	4.3	61125-540CALF	61125-545CA			LAYOUT 4	
750CALF	RIGHT	RIGHT	5.0	61125-550CALF	61125-555CA			LAYOUT 4	
800CALF	LEFT	LEFT	0.0	61126-602CALF	61125-605CA			LAYOUT 3	
820CALF	LEFT	LEFT	2.2	61125-620CALF	61125-625CA			LAYOUT 4	
840CALF	LEFT	LEFT	4.3	61125-640CALF	61125-645CA			LAYOUT 4	
850CALF	LEFT	LEFT	5.0	61125-650CALF	61125-655CA			LAYOUT 4	

OR

ORDERING INFORMATION

ORDERING INFORMATION		
NAME	PART NO.	Q'TY
① EJECT HEADER ASS'Y	61124-****LF	1
④ MATING RECEPTACLE	91931-31169LF	2

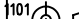


NOTE:

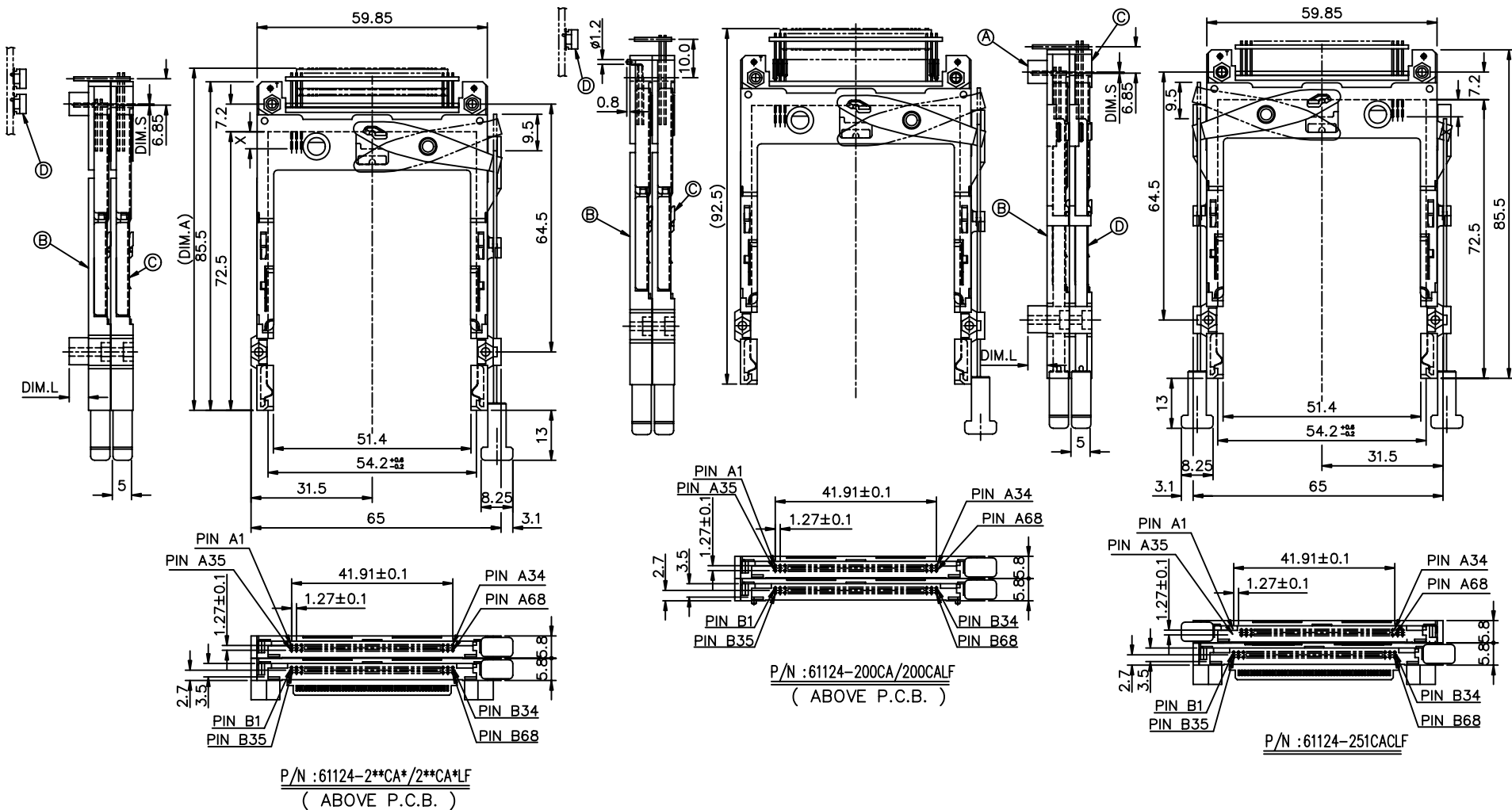
- THE HOUSING WILL WITHSTAND EXPOSURE TO 260°C PEAK TEMPERATURE FOR 10 SECONDS IN A WAVE SOLDER APPLICATION WITH A 1.00MM MINIMUM THICK CIRCUIT BOARD.
- THE PRODUCTS FOR SUFFIX " L " MEET EUROPEAN UNION DIRECTIVES AND OTHER COUNTRY REGULATIONS AS DESCRIBED IN GS-22-008 OTHER PRODUCTS ARE COMPLIANT EXCEPT FOR Pb.
- LEAD FREE P/N PACKAGING MEETS GS-14-920 SPECIFICATION
- FINISH (PIN)
CONTACT AREA : 0.1 μ m MIN. GOLD OVER
0.5 μ m MIN. Pd-Ni (FOR-***CA,-***CALF)
0.8 μ m MIN. Pd-Ni (FOR-***CAC,-***CACL)
SOLDER TAIL(FOR -*****) : 2.5 μ m MIN. Sn-Pb
SOLDER TAIL(FOR -*****LF) : 2.5 μ m MIN. PURE Sn

OR

ORDERING INFORMATION

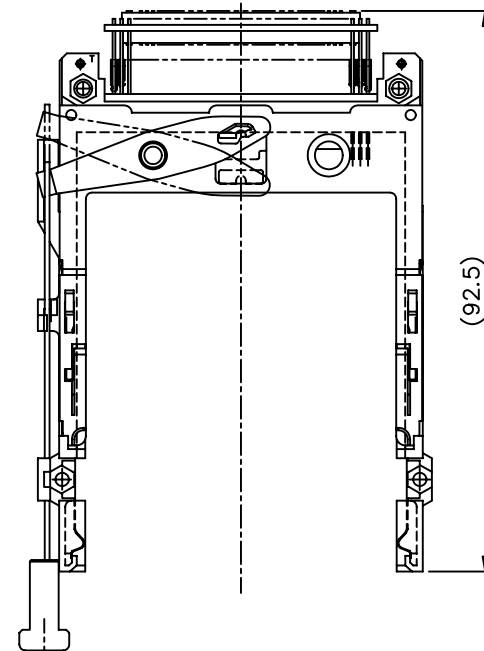
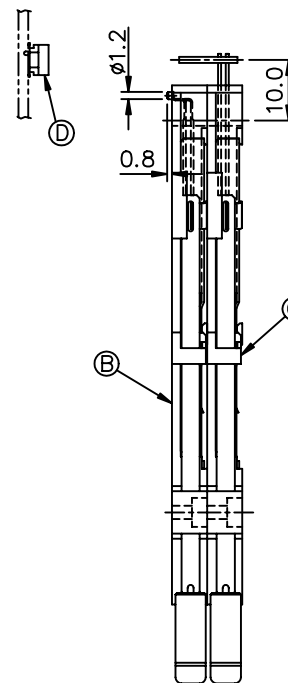
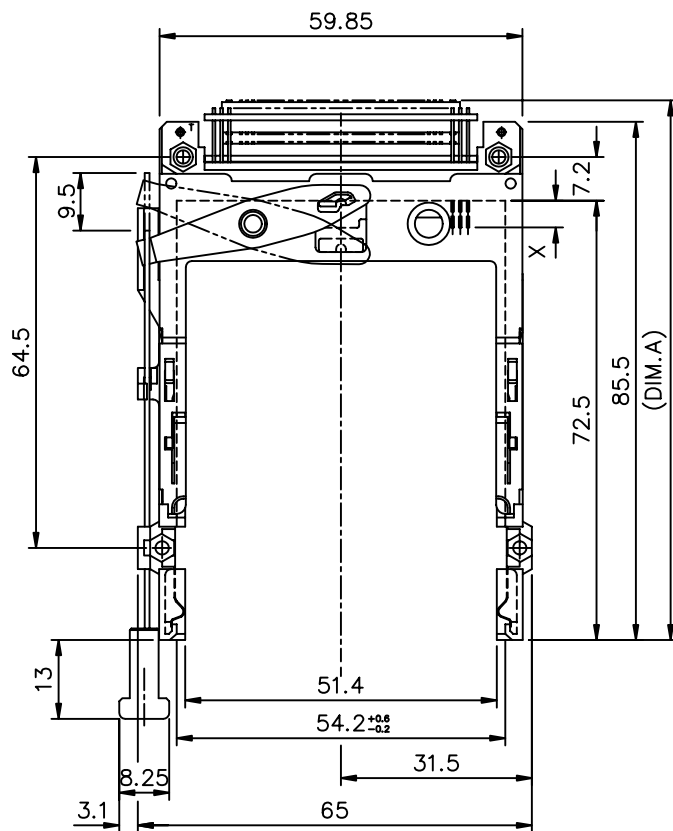
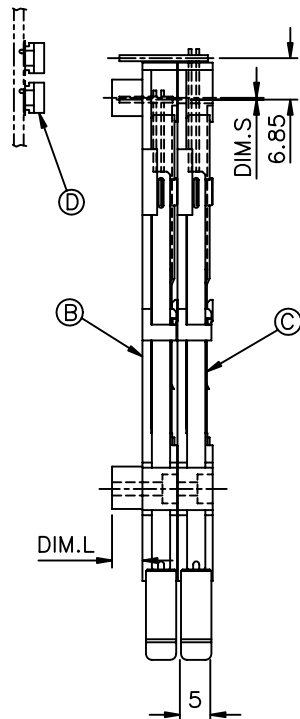
ORDERING INFORMATION		
NAME	PART NO.	Q'TY
② DECK CLOSEST TO PCB	61126-****LF	1
③ DECK FARTHEST FROM PCB	61125-****LF	1
④ MATING RECEPTACLE	91931-31169LF	1

mat'l. code				surface ISO 1302		tolerance ISO 406 ISO 1101		projection 		product family																																																																																																																																																																																																																																																																																																																																																																																																																																																																																																																																																																																																																																																												
ltr		ecn no		dr	date	tolerances unless otherwise specified				title																																																																																																																																																																																																																																																																																																																																																																																																																																																																																																																																																																																																																																																												
G						angles		linear		± 0.30				EJECTOR HEADER ASS'Y 3.3V SMT, TYPE 1/2/3																																																																																																																																																																																																																																																																																																																																																																																																																																																																																																																																																																																																																																																								
						±2'						scale 1:2:1																																																																																																																																																																																																																																																																																																																																																																																																																																																																																																																																																																																																																																																										
						dr	WENDY CHEN			07/06/95					dwg no				sheet 2 of 8				size																																																																																																																																																																																																																																																																																																																																																																																																																																																																																																																																																																																																																																															
						enrg	L.W. LU			07/06/95					61124				A4																																																																																																																																																																																																																																																																																																																																																																																																																																																																																																																																																																																																																																																			
						chr	JOSEPH HSIAO			07/06/95																																																																																																																																																																																																																																																																																																																																																																																																																																																																																																																																																																																																																																																												
						appd	JENN TSAO								type CUSTOMER				Drawing																																																																																																																																																																																																																																																																																																																																																																																																																																																																																																																																																																																																																																																			
sheet		revision																																																																																																																																																																																																																																																																																																																																																																																																																																																																																																																																																																																																																																																																				

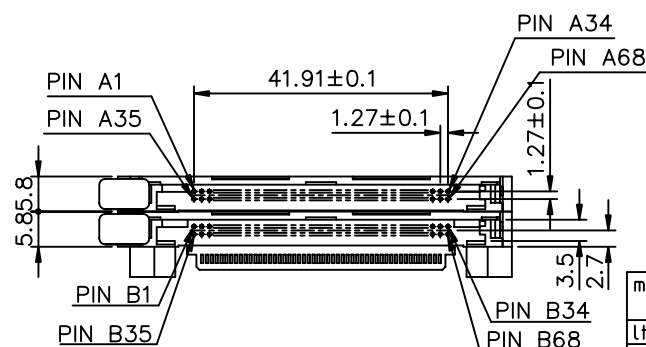


Ⓐ PART NUMBER	DIM.L	DIM.S	DIM.A
61124-220CA	2.2	-0.3	89.05
61124-240CA	4.3	-0.3	89.05
61124-250CA	5.0	-0.3	89.05
61124-220CALF	2.2	-0.3	89.05
61124-240CALF	4.3	-0.3	89.05
61124-250CALF	5.0	-0.3	89.05
61124-220CAC	2.2	-0.3	89.05
61124-240CAC	4.3	-0.3	89.05
61124-250CAC	5.0	-0.3	89.05
61124-220CACLF	2.2	-0.3	89.05
61124-240CACLF	4.3	-0.3	89.05
61124-250CACLF	5.0	-0.3	89.05
61124-251CACLF	5.0	-0.3	89.05

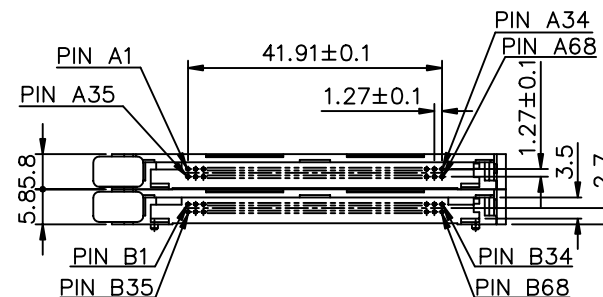
mat'l. code	surface	tolerance	projection	product family
	ISO 1302	ISO 406 ISO 101		
ltr	ecn no	dr	date	title
G				EJECTOR HEADER ASS'Y
				3.3V SMT, TYPE 1/2/3
				dwg no
				61124
				sheet 3 of 8
				size A4
				type CUSTOMER
				Drawing
sheet index	revision	sheet		



① PART NUMBER	DIM.L	DIM.S	DIM.A
61124-320CA	2.2	-0.3	89.05
61124-340CA	4.3	-0.3	89.05
61124-350CA	5.0	-0.3	89.05
61124-320CALF	2.2	-0.3	89.05
61124-340CALF	4.3	-0.3	89.05
61124-350CALF	5.0	-0.3	89.05



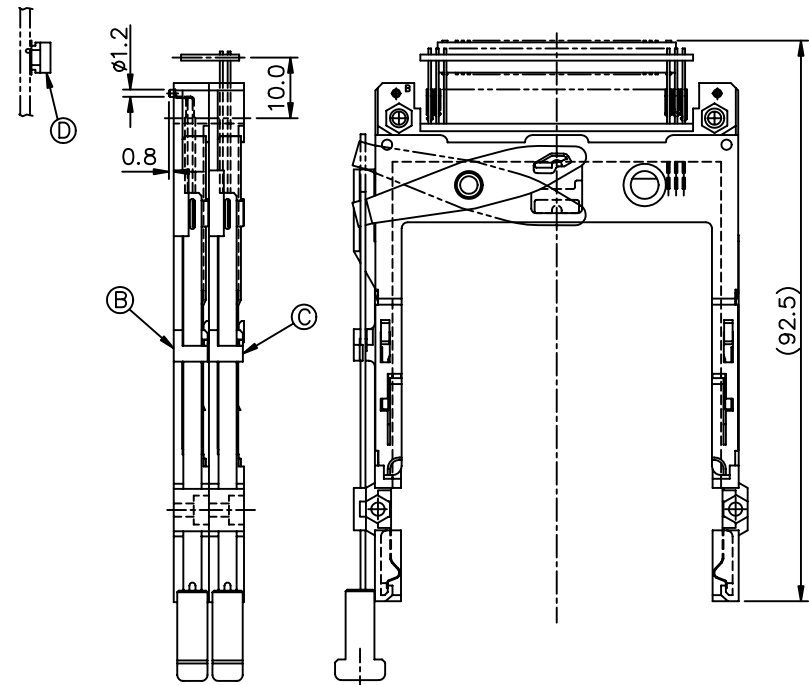
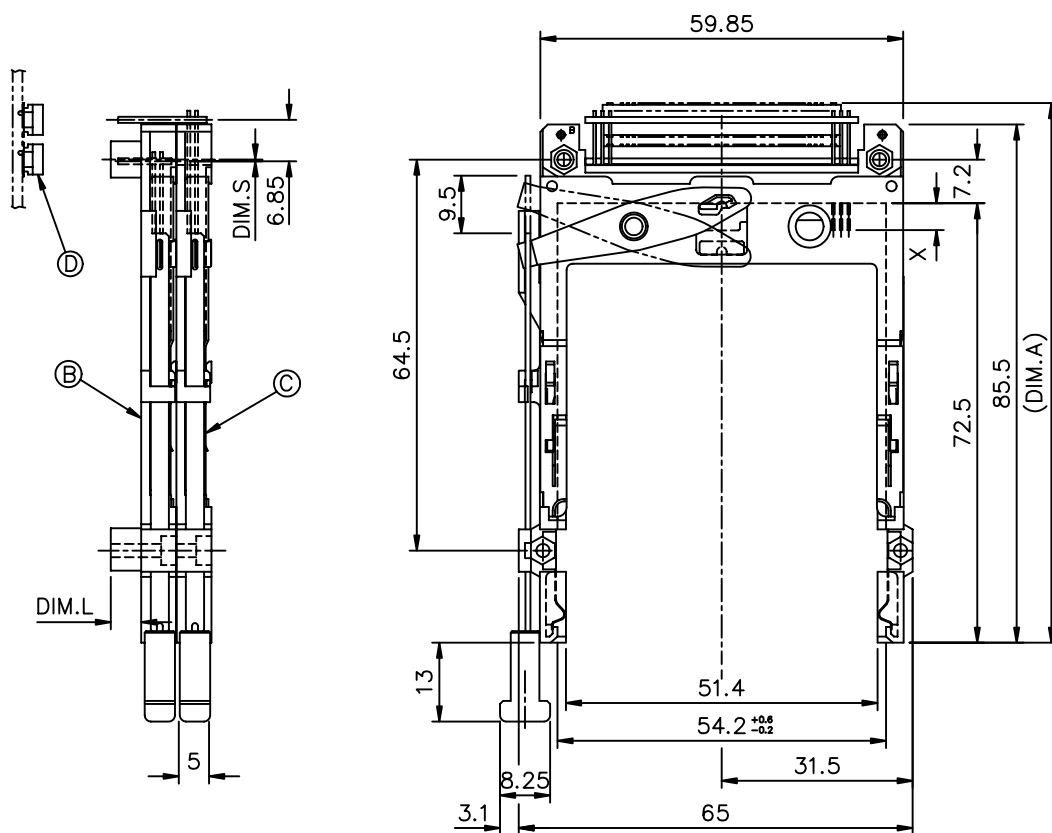
P/N : 61124-3**CA/3**CALF
(ABOVE P.C.B.)



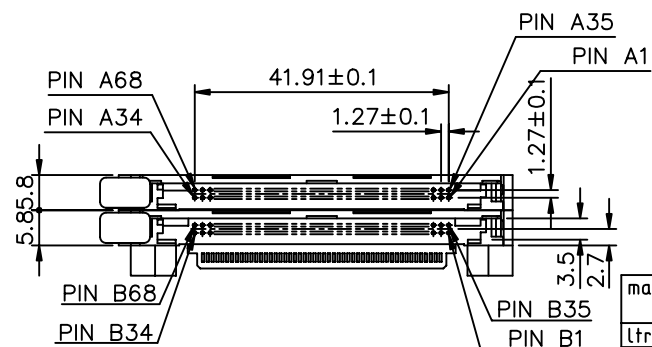
P/N : 61124-300CA/300CALF
(ABOVE P.C.B.)

mat'l. code				surface ISO 1302	tolerance ISO 406 ISO 1101	projection 1:1	product family	
ltr	ecn no	dr	date	tolerances unless otherwise specified			title	
G				angles	linear	± 0.30	EJECTOR HEADER ASS'Y 3.3V SMT, TYPE 1/2/3	
				±2'		scale 1:2:1		
				dr	WENDY CHEN	07/06/95	dwg no	
				enr	L.W. LU	07/06/95	sheet 4 of 8 size	
				chr	JOSEPH HSIAO	07/06/95	61124	
				appd	JENN TSAO	07/06/95	A4	
sheet index		revision sheet					type CUSTOMER Drawing	

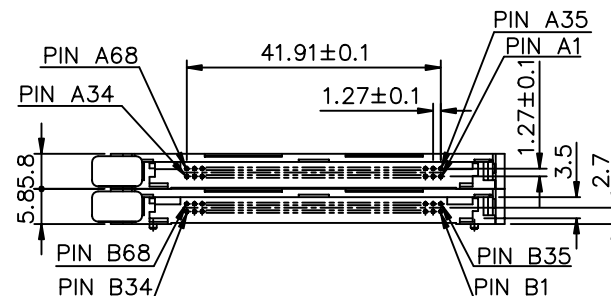




① PART NUMBER	DIM.L	DIM.S	DIM.A
61124-720CA	2.2	-0.3	89.05
61124-740CA	4.3	-0.3	89.05
61124-750CA	5.0	-0.3	89.05
61124-720CALF	2.2	-0.3	89.05
61124-740CALF	4.3	-0.3	89.05
61124-750CALF	5.0	-0.3	89.05

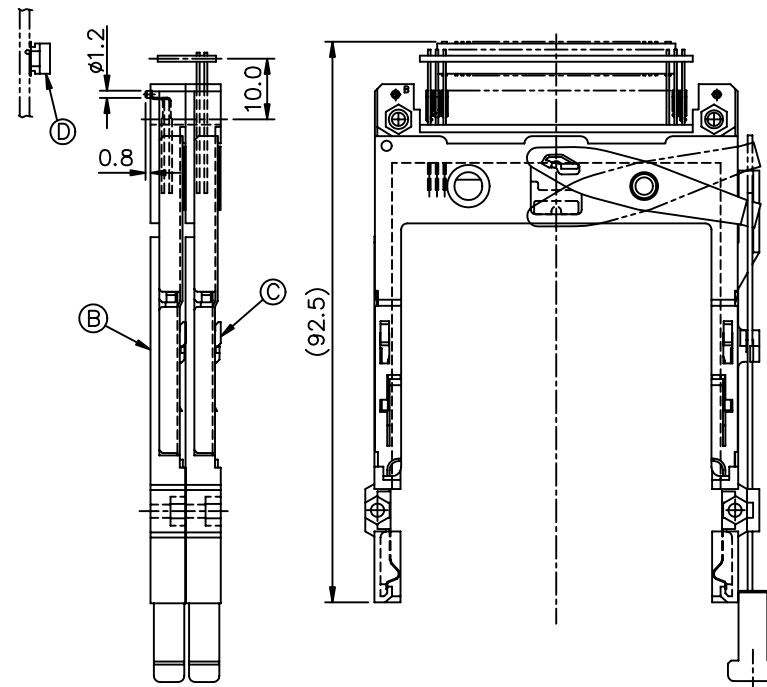
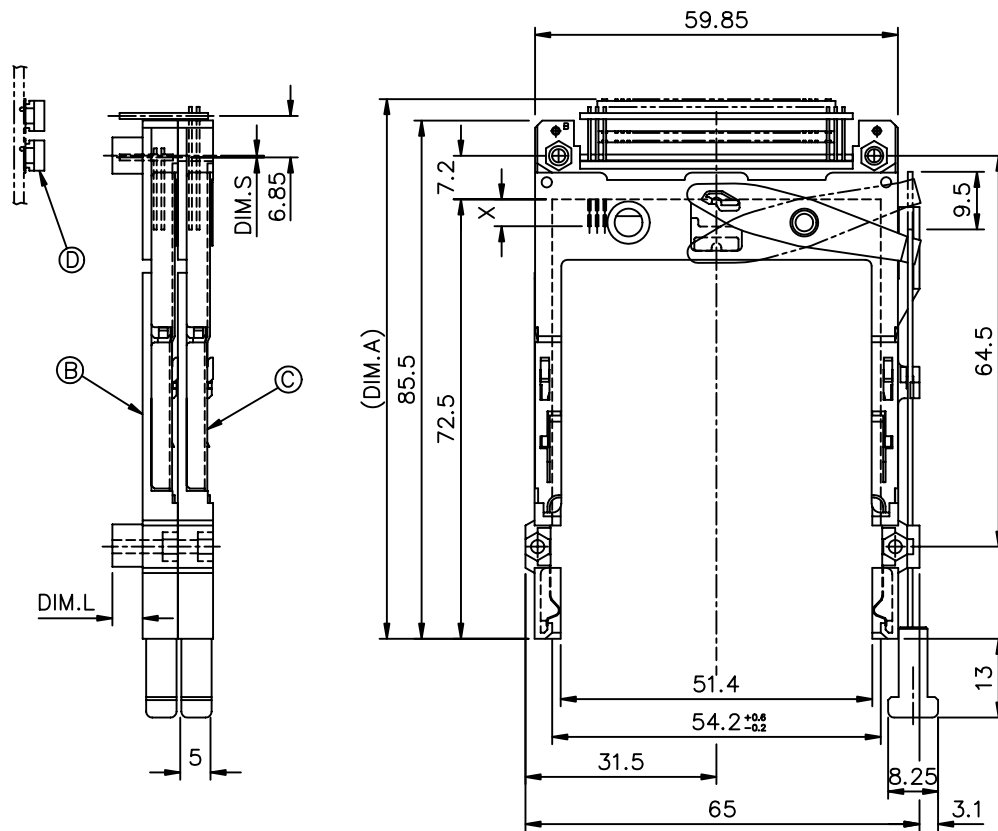


P/N : 61124-7**CA/7**CALF
(BELOW P.C.B.)

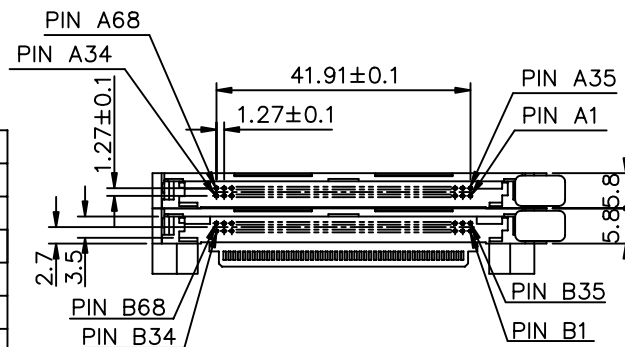


P/N : 61124-700CA/700CALF
(BELOW P.C.B.)

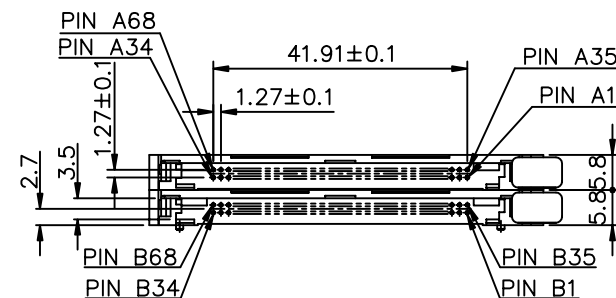
mat'l. code				surface	tolerance	projection	product family
				ISO 1302	ISO 406 ISO 1101		
ltr	ecn no	dr	date	tolerances unless otherwise specified			title
G				angles	linear	± 0.30	EJECTOR HEADER ASS'Y
				±2'		MM	3.3V SMT, TYPE 1/2/3
						scale 1:2:1	
		dr	WENDY CHEN	07/06/95			dwg no
		enr	L.W. LU	07/06/95			sheet 5 of 8 size
		chr	JOSEPH HSIA	07/06/95			61124
		appd	JENN TSAO	07/06/95			A4
sheet	revision						type CUSTOMER Drawing
index	sheet						



① PART NUMBER	DIM.L	DIM.S	DIM.A
61124-820CA	2.2	-0.3	89.05
61124-840CA	4.3	-0.3	89.05
61124-850CA	5.0	-0.3	89.05
61124-820CALF	2.2	-0.3	89.05
61124-840CALF	4.3	-0.3	89.05
61124-850CALF	5.0	-0.3	89.05



P/N : 61124-8**CA/8**CALF
(BELOW P.C.B.)



P/N : 61124-800CA/800CALF
(BELOW P.C.B.)

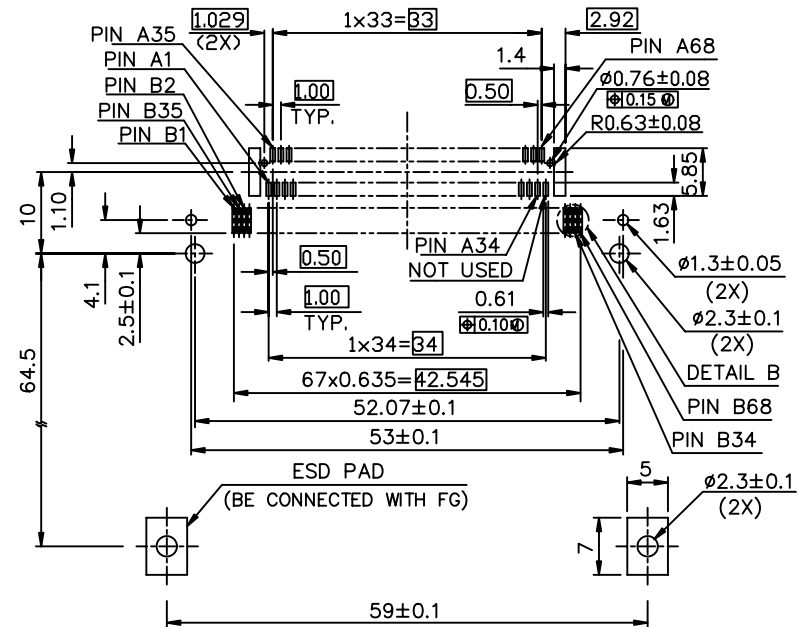
mat'l. code	surface ISO 1302	tolerance ISO 406 ISO 101	projection 101	product family
ltr	ecn no	dr	date	title
G				EJECTOR HEADER ASS'Y 3.3V SMT, TYPE 1/2/3
		angles	linear	± 0.30
		±2'		scale 1.2:1
	dr	WENDY CHEN	07/06/95	dwg no
	enr	L.W. LU	07/06/95	sheet 6 of 8 size
	chr	JOSEPH HSIAO	07/06/95	61124
	appd	JENN TSAO	07/06/95	A4
sheet index	revision sheet			type CUSTOMER Drawing

FCI CONFIDENTIAL

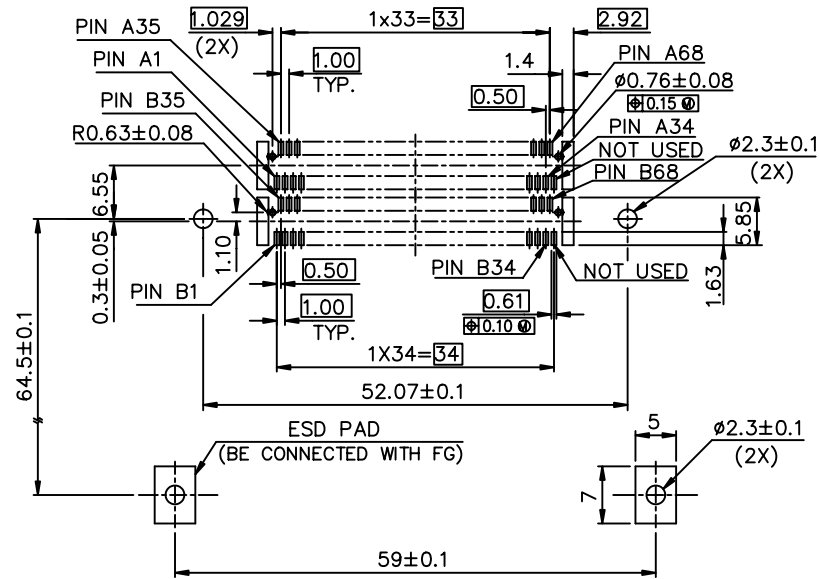


This document is the property of and embodies CONFIDENTIAL and PROPRIETARY information of FCI. No part of the information shown on this document may be used in any way or disclosed to others without the written consent of FCI. Copyright FCI

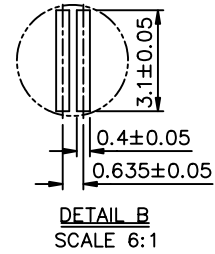
PRODUCT NO.
61124-*****/****LF



RECOMMENDED P.C.B. LAYOUT 1 (MOUNTED SIDE)



RECOMMENDED P.C.B. LAYOUT 2 (MOUNTED SIDE)



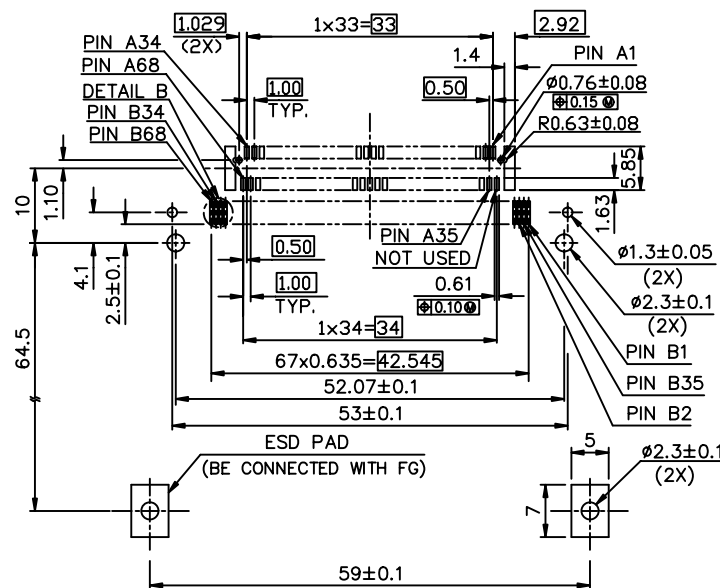
mat'l. code				surface		tolerance		projection		product family																																																																																																																																																																																																																																																																																																																																																																																																																																																																																																																																																								
				ISO 1302		ISO 406 ISO 1101																																																																																																																																																																																																																																																																																																																																																																																																																																																																																																																																																												
ltr		ecn no		dr	date	tolerances unless otherwise specified										title																																																																																																																																																																																																																																																																																																																																																																																																																																																																																																																																																		
G						angles		linear		± 0.30				EJECTOR HEADER ASS'Y																																																																																																																																																																																																																																																																																																																																																																																																																																																																																																																																																				
						±2°						scale 1:2:1		3.3V SMT, TYPE 1/2/3																																																																																																																																																																																																																																																																																																																																																																																																																																																																																																																																																				
						dr	WENDY CHEN			07/06/95					dwg no					sheet 7 of 8					size																																																																																																																																																																																																																																																																																																																																																																																																																																																																																																																																									
						enr	L.W. LU			07/06/95					61124										A4																																																																																																																																																																																																																																																																																																																																																																																																																																																																																																																																									
						chr	JOSEPH HSIA			07/06/95																																																																																																																																																																																																																																																																																																																																																																																																																																																																																																																																																								
						appd	JENN TSAO			07/06/95																																																																																																																																																																																																																																																																																																																																																																																																																																																																																																																																																								
sheet		revision																																																																																																																																																																																																																																																																																																																																																																																																																																																																																																																																																																

FCI CONFIDENTIAL

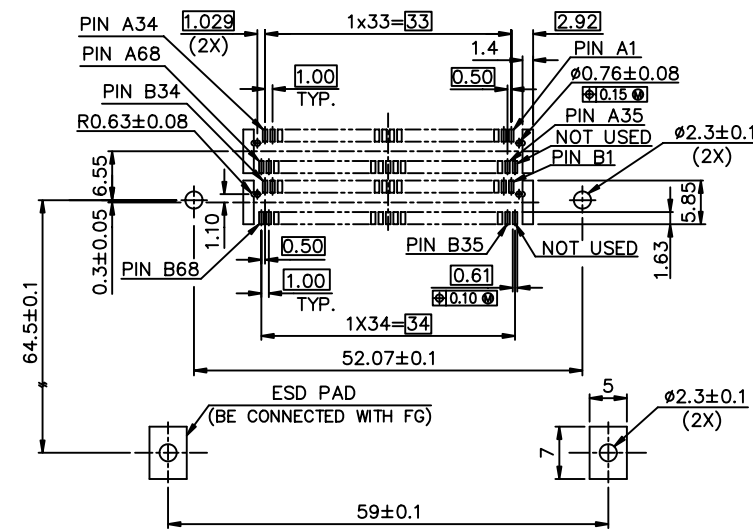


This document is the property of and embodies CONFIDENTIAL and PROPRIETARY information of FCI. No part of the information shown on this document may be used in any way or disclosed to others without the written consent of FCI.
Copyright FCI

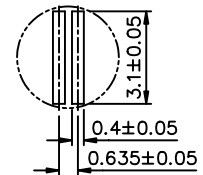
PRODUCT
61124-*****/****LF



4 CARD INSERTION DIRECTION
RECOMMENDED P.C.B. LAYOUT 3 (MOUNTED SIDE)



4 CARD INSERTION DIRECTION
RECOMMENDED P.C.B. LAYOUT 4 (MOUNTED SIDE)



mat'l. code				surface	tolerance	projection	product family		
				ISO 1302	ISO 406 ISO 1101				
ltr	ecn no	dr	date	tolerances unless otherwise specified			title		
G				angles	linear	± 0.30	EJECTOR HEADER ASS'Y		
				± 2°			3.3V SMT, TYPE 1/2/3		
				dr	WENDY CHEN	07/06/95	dwg no		
				enr	L.W. LU	07/06/95	sheet 8 of 8 size		
				chr	JOSEPH HSIA	07/06/95	61124		
				appd	JENN TSAO	07/06/95	A4		
							type CUSTOMER Drawing		
sheet	revision								
index	sheet								