

PRODUCT NUMBER
57202-XXX-XXXXLX

PLATING

S = 0.38µm GOLD/GXT ON CONTACT AREA
3.81µm TIN LEAD ON TAIL

G = 0.76µm GOLD/GXT ON CONTACT AREA
3.81µm TIN LEAD ON TAIL

F = GOLD FLASH ON CONTACT AREA
3.81µm TIN LEAD ON TAIL

WHEN "LF" IS REQUIRED, 2µm MIN
MATTE TIN OVER 1.27µm MIN NICKEL
INSTEAD OF TIN-LEAD

WHEN REQUIRED, ADD SUFFIX
LETTER "LF" INDICATES THE
PRODUCT IS RoHS COMPATIBLE
SEE NOTE 7

POLARIZATION, SEE NOTE 6

PACKAGING, SEE NOTE 5

NB OF POS PER ROW : 02 TO 25

STYLE	POST LENGTH ±0.2
51	2.00
52	4.00
53	3.50

NOTES:

- MATERIAL HOUSING: HIGH TEMP. THERMOPLASTIC
UL 94V-0, COLOR BLACK
- MATERIAL TERMINAL: COPPER ALLOY
- TO DETERMINE DIMENSIONS:
N = NUMBER OF POSITIONS PER ROW.
- 7N MIN. PIN RETENTION IN EITHER DIRECTION.
- PACKAGING:
= PLASTIC BOX.
- = PLASTIC BOX WHEN POLARISATION FEATURE APPLICABLE.
U = TUBE AVAILABLE FROM 04 TO 25 POS PER ROW.
A = TAPE AND REEL WITH PICK UP CAP INSTALLED
IN THE CENTER OF THE PRODUCT FOR PICK AND PLACE
SEE TA 884 FOR PRODUCT AVAILABILITY.
- FOR POLARIZATION, SPECIFY POSITION NUMBER TO OMIT PIN.
EXAMPLE : 03 = OMIT PIN POSITION 3, SEE TOP VIEW.
OMIT FROM PRODUCT NUMBER IF THIS FEATURE IS NOT APPLICABLE.
- RoHS COMPATIBLE PRODUCT SPECIFICATIONS

a - PLATING:

- "LF" MEANS THE PRODUCT IS LEAD-FREE,
2µm MINIMUM MATTE TIN OVER 1.27µm
MINIMUM NICKEL UNDERPLATE.

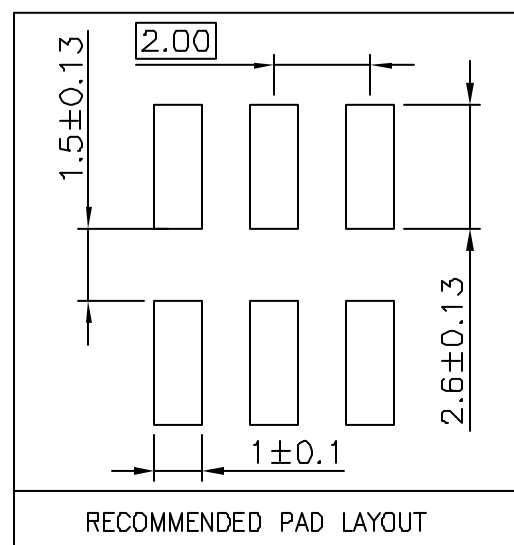
b - MANUFACTURING PROCESS COMPATIBILITY

- THE HOUSING WILL WITHSTAND EXPOSURE TO
260°C PEAK TEMPERATURE FOR 30 SECONDES
IN A CONVECTION, INFRA-RED OR VAPOR
PHASE REFLOW OVEN.

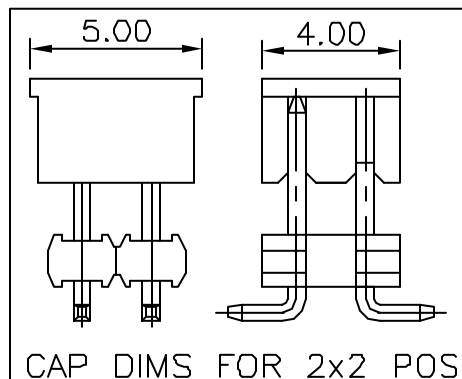
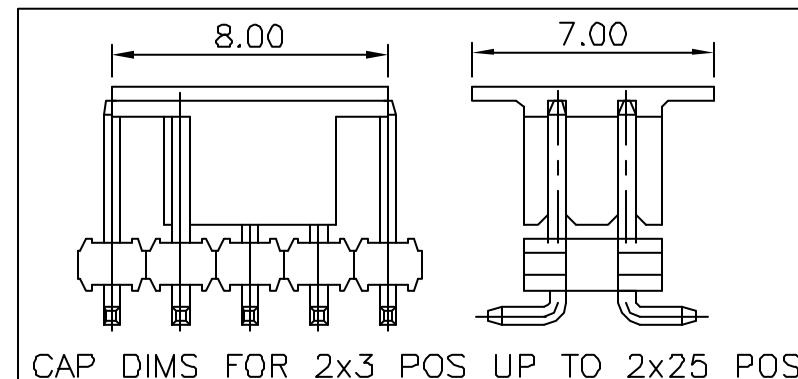
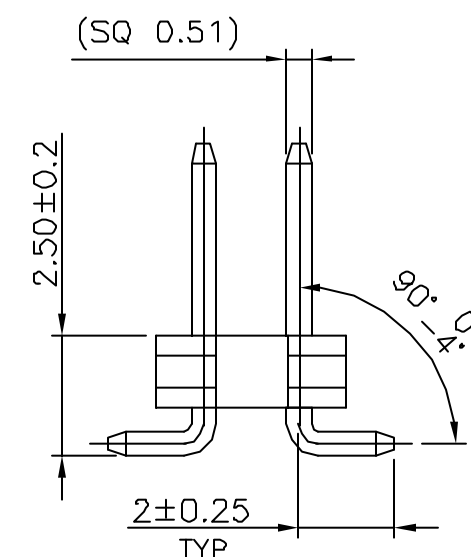
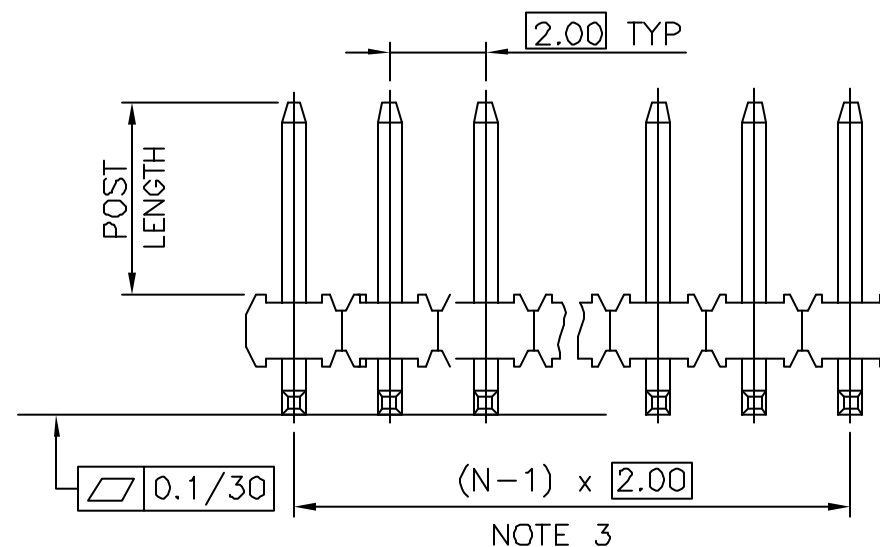
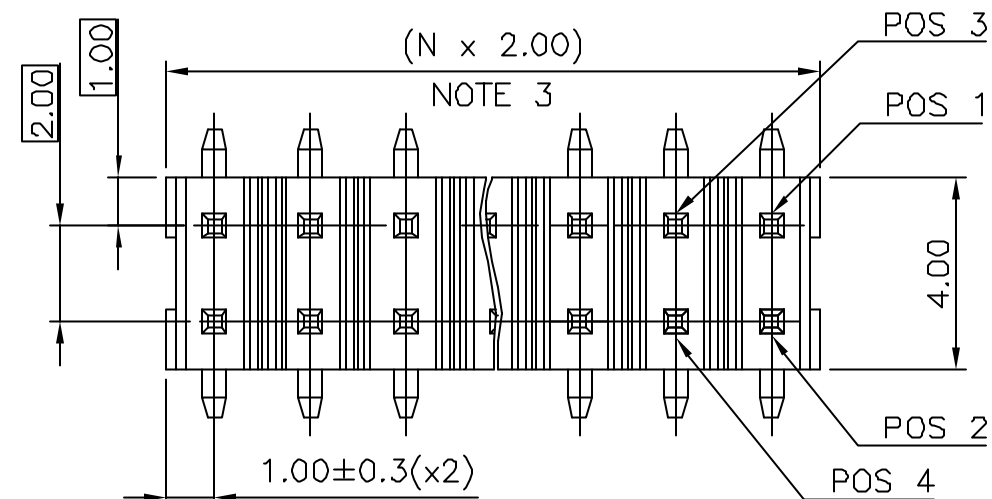
c - LABELLING:

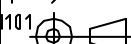


- MEETS PACKAGING SPECS AS PER GS-14-920

d - LEGAL STATEMENT : SEE GS-22-008



TOP VIEW



mat'l. code				surface ISO 1302 ✓		tolerance ISO 406 ISO 101		projection 		product family MINITEK			
ltr	ecn na	dr	date	tolerances unless		otherwise specified				title			
D	V10963	DAI	01.03.07	angles	linear	.X ±0.3		scale 1:1	UNSH HEADER 2.00 mm VERTICAL SMT				
E	F04-0178	LMU	04.11.25			.XX ±0.13							
F	F04-0378	LMU	04.11.25			.XXX ±0.05							
G	F05-0124	LMU	05.02.07	dr	L.MULIN		04.05.06		dwg no		sheet 1 of 1		size
H	F06-0210	LMU	06.07.04	engr	J.COMPAGNON		0.4.11.25		57202		A.		
J	F06-0327	LMU	07.01.03	chr									
K	F08-0145	ELA	17.04.08	appd	JM.C		04.11.25						
sheet index		revision sheet											