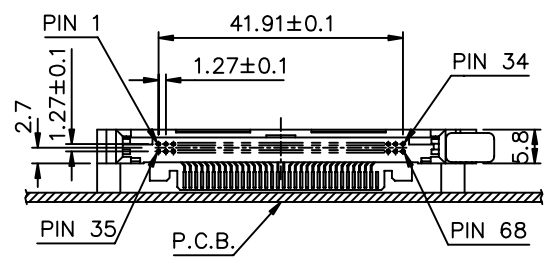
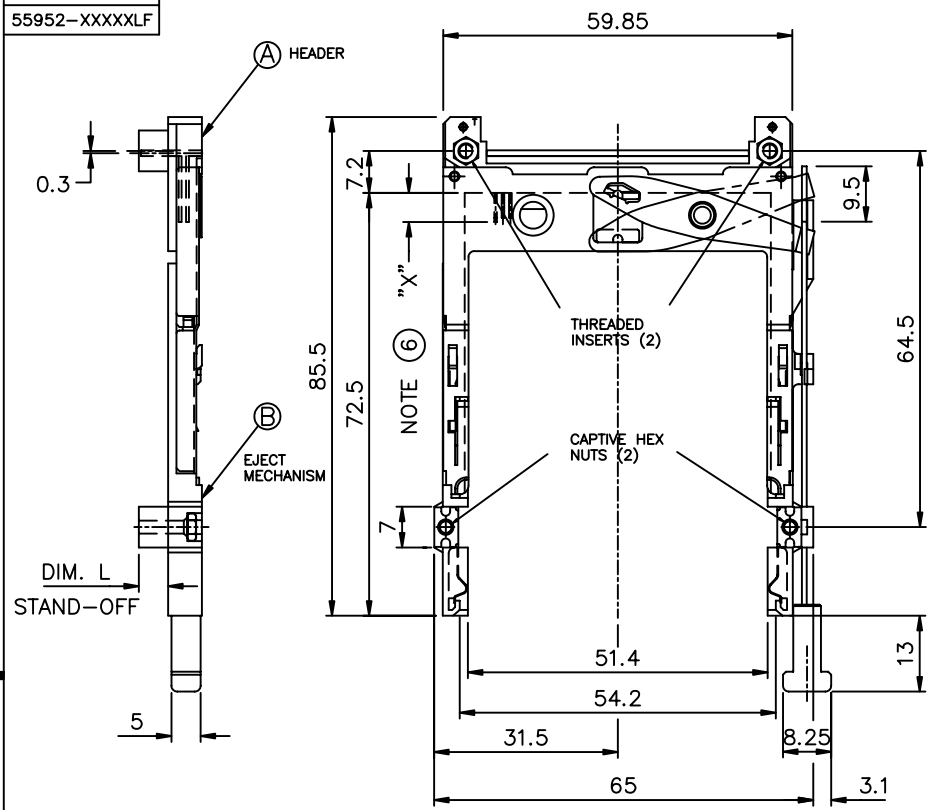




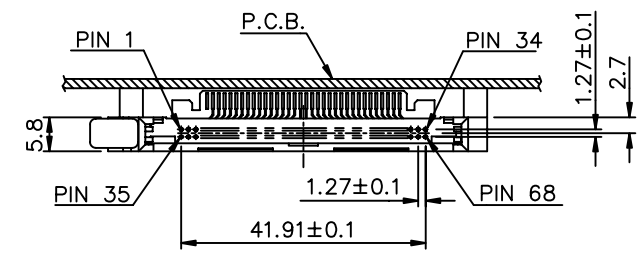
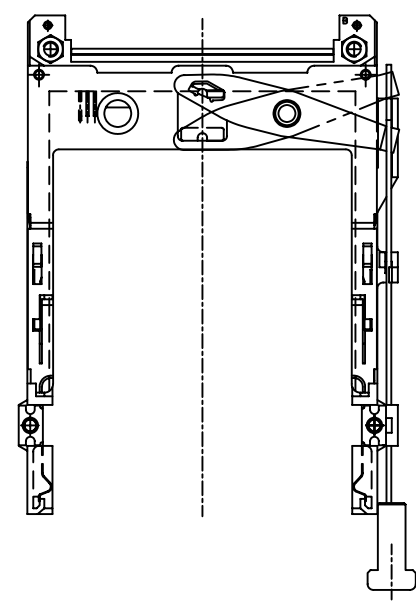
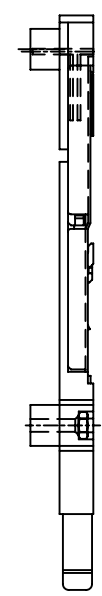
Tous droits strictement reserves. Reproduction ou communication a des tiers interdite sous quelque forme que ce soit sans autorisation ecrite du proprietaire. Propriete de c FCI. Droits de reproduction FCI.

All rights strictly reserved. Reproduction or issue to third parties in any form whatever is not permitted without written authority from the proprietor. Property of FCI. Copyright FCI.

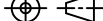

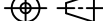
PRODUCT NO.
55952-XXXXX
55952-XXXXXL



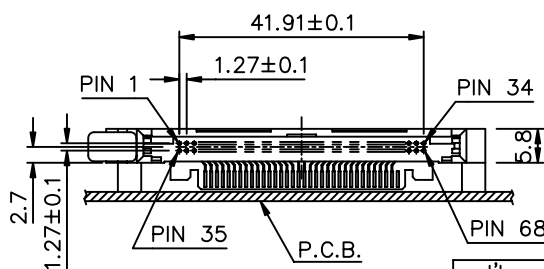
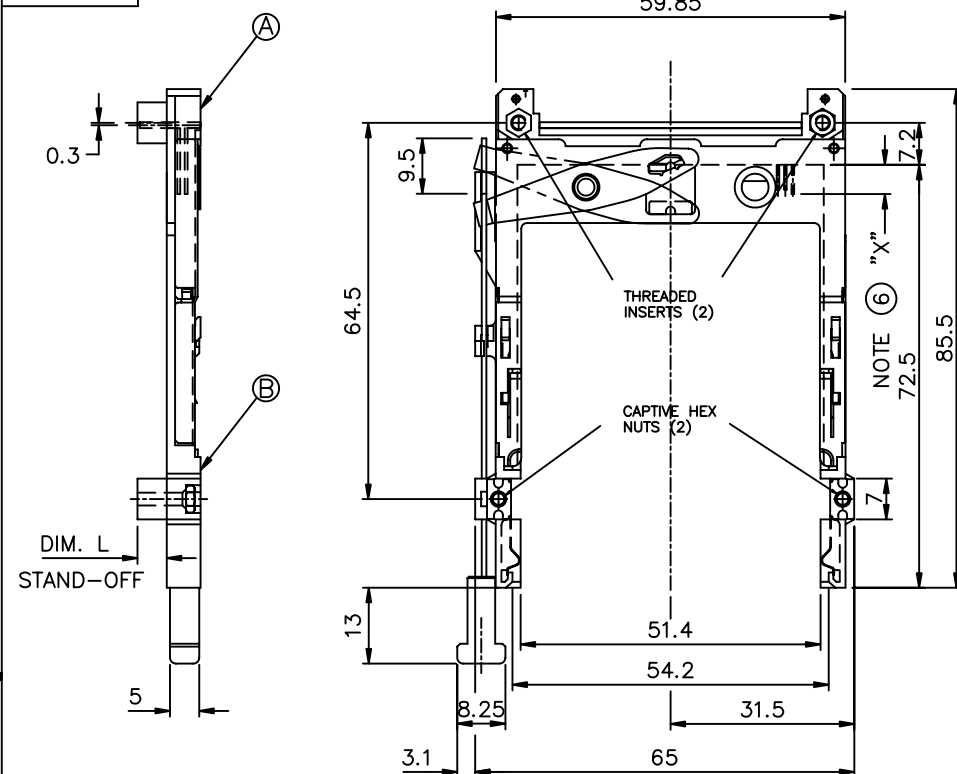
ABOVE P.C.B.
RIGHT PUSH ROD



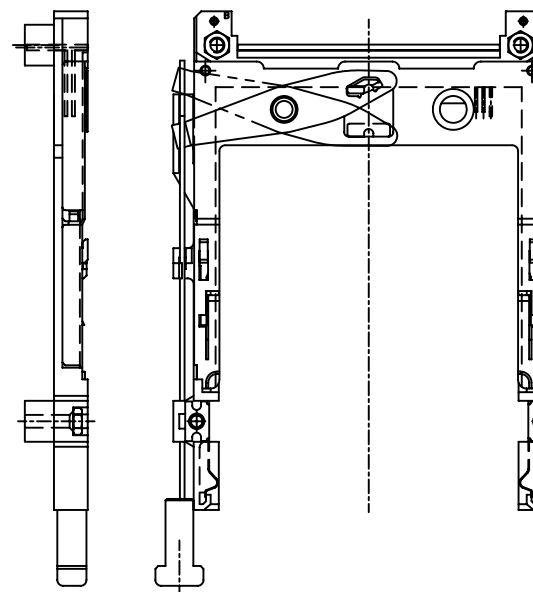
BELOW P.C.B.
LEFT PUSH ROD

mat'l. code				tolerances unless otherwise specified				CUSTOMER COPY		<div><div>A</div><div>FCI</div></div> <div>www.fciconnect.com</div>									
ltr	ecn no	dr	date	linear	.X±.3			projection		title EJECTOR HEADER ASS'Y 3.3V, SMT TYPE 1/2/3									
A	V01768	RJR	8/22/00		.XX±.13														
B	V03-0512	WL	05/29/03		.XXX±.051														
C	T03-0540	WL	12/05/03	angles	0° ±2°					product family PCMCIA size dwg no A4 55952									
D	N05-135	WB	05/27/05	dr	R. RINEHART	8/22/00	MM												
				engr	D. BRANN	8/22/00													
				chr	D. BRANN	8/22/00													
				appd	D. BRANN	8/22/00	scale	1:1	sheet 1 of 4										
sheet index		revision sheet		C	C	D	B												
				1	2	3	4												

PRODUCT NO.
SEE TABLE



ABOVE P.C.B.
LEFT PUSH ROD



BELOW P.C.B.
RIGHT PUSH ROD

mat'l. code				tolerances unless otherwise specified		CUSTOMER COPY	www.fciconnect.com	
ltr	ecn no	dr	date	linear	.X±.3			
c					.XX±.13	projection		
					.XXX±.051			
				angles	0° ±2°			
				dr	R. RINEHART 8/22/00			
				enr	D. BRANN 8/22/00	MM	product family PCMCIA size dwg no	
				chr	D. BRANN 8/22/00	scale		
				appd	D. BRANN 8/22/00	1:1	A4 55952	
sheet index	revision sheet							
							cage code	
							STATUS	

PRODUCT NO.
SEE TABLE

BELOW	LEFT	5	55952-650CALF	10003528-5050LF	95627-05CA	93260-005
		4.3	55952-640CALF	10003528-5043LF	95627-043CA	93260-013
		2.2	55952-620CALF	10003528-5022LF	95627-022CA	93260-011
	RIGHT	5	55952-550CALF	10003528-5050LF	95627-15CA	93260-005
		4.3	55952-540CALF	10003528-5043LF	95627-143CA	93260-013
		2.2	55952-520CALF	10003528-5022LF	95627-122CA	93260-011
ABOVE	LEFT	5	55952-150CALF	10003528-0050LF	95627-15CA	93260-005
		4.3	55952-140CALF	10003528-0043LF	95627-143CA	93260-013
		2.2	55952-120CALF	10003528-0022LF	95627-122CA	93260-011
	RIGHT	5	55952-050CALF	10003528-0050LF	95627-05CA	93260-005
		4.3	55952-040CALF	10003528-0043LF	95627-043CA	93260-013
		2.2	55952-020CALF	10003528-0022LF	95627-022CA	93260-011
BELOW	LEFT	5	55952-650CA	10003528-5050	95627-05CA	93260-005
		4.3	55952-640CA	10003528-5043	95627-043CA	93260-013
		2.2	55952-620CA	10003528-5022	95627-022CA	93260-011
	RIGHT	5	55952-550CA	10003528-5050	95627-15CA	93260-005
		4.3	55952-540CA	10003528-5043	95627-143CA	93260-013
		2.2	55952-520CA	10003528-5022	95627-122CA	93260-011
ABOVE	LEFT	5	55952-150CA	10003528-0050	95627-15CA	93260-005
		4.3	55952-140CA	10003528-0043	95627-143CA	93260-013
		2.2	55952-120CA	10003528-0022	95627-122CA	93260-011
	RIGHT	5	55952-050CA	10003528-0050	95627-05CA	93260-005
		4.3	55952-040CA	10003528-0043	95627-043CA	93260-013
		2.2	55952-020CA	10003528-0022	95627-022CA	93260-011
P.C.B. SIDE ③	PUSH ROD LOCATION ③	DIM. L	PRODUCT NO.	Ⓐ HDR & PWB ASS'Y	Ⓑ EJ ASS'Y	INSERT(2 pcs)

NOTES:

- 8mm MIN. CARD EJECT.
- EJECT TRAVEL: 9.5mm
- ③ PUSH ROD LOCATION AND P.C.B. SIDE ARE AS APPEARS INSTALLED.

4. MATERIAL

4.1 PART Ⓐ (HEADER ASS'Y)

PLASTIC : HOUSING ...LCP UL94V-O
PIN : PHOSPHOR BRONZE
PCB : FR4

4.2 PART Ⓑ (EJECT MECHANISM ASS'Y)

PLASTIC : GUIDE: POLYPHTHARAMID UL94V-O BLACK
PUSH ROD CAP: POLYPHTHARAMID UL94V-O BLACK
PLATE AND PUSH ROD : STAINLESS
EMI CONTACT: PHOSPHOR BRONZE

5. FINISH (PIN)

UNDER PLATING : 0.5μm Ni
CONTACT AREA : 0.1μm GOLD OVER
0.5μm Pd-Ni
SOLDER TAIL : 2.5μm Sn-Pb
: 2.5μm PURE Sn(-*****LF)

⑥. DIM "X"

4.25±0.1	3.5±0.1	5.0±0.1
OTHERS	36,67	1,17,34,35,51,68

7. RECOMMENDED MATING CONNECTOR

P/N 91931-31169

8. RECOMMENDED SCREW TORQUE:

1.0 TO 1.5 MAX in-lbs (1.2-1.7 cm-kgs)


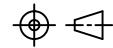
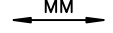
9. IF LEAD FREE P/N.THE HOUSING WILL WITHSTAND EXPOSURE TO

260°C PEAK TEMPERATURE FOR 10 SECONDS IN A WAVE SOLDER
APPLICATION WITH A 1.00MM MINIMUM THICK CIRCUIT BOARD.

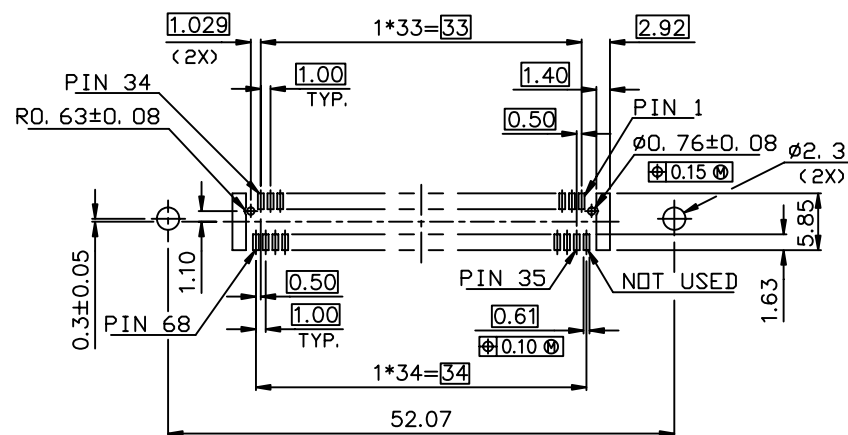
10. IF LEAD FREE P/N.THE PRODUCT MEETS EUROPEAN UNION DIRECTIVES

AND OTHER COUNTRY REGULATIONS AS DESCRIBED IN GS-22-008

11. LEAD FREE P/N PACKAGING MEETS GS-14-920 SPECIFICATION

mat'l. code				tolerances unless otherwise specified		CUSTOMER COPY		 www.fciconnect.com	
ltr	ecn no	dr	date	linear	.X±.3	projection		title	
D					.XX±.13			EJECTOR HEADER ASS'Y	
					.XXX±.051			3.3V, SMT TYPE 1/2/3	
				angles	0° ±2°			product family PCMCIA	
				dr	R. RINEHART 8/22/00	MM		code	
				enr	D. BRANN 8/22/00			size	
				chr	D. BRANN 8/22/00			dwg no	
				appd	D. BRANN 8/22/00	scale	1:1	sheet 3 of 4	
sheet index		revision sheet							




FOR P/N: 55952-5**CA/5**CALF/6**CA/6**CALF



RECOMMENDED PCB LAYOUT BELOW PCB MOUNT

A
H
U
L

1

mat'l. code				tolerances unless otherwise specified			CUSTOMER COPY		 Electronics FCI www.fciconnect.com																																																																																																																																																																																																																																																																																																																																																																																																																																																																																																																																																																																																																																																																																																																																																																																																																																																																																																																																																																																																																																																																																																																																																																																																														
litr	ecn no	dr	date	linear	.X±.3			projection 	title																																																																																																																																																																																																																																																																																																																																																																																																																																																																																																																																																																																																																																																																																																																																																																																																																																																																																																																																																																																																																																																																																																																																																																																																														
B					.XX±.13				EJECTOR HEADER ASS'Y																																																																																																																																																																																																																																																																																																																																																																																																																																																																																																																																																																																																																																																																																																																																																																																																																																																																																																																																																																																																																																																																																																																																																																																																														
					.XXX±.051				3.3V, SMT TYPE 1/2/3																																																																																																																																																																																																																																																																																																																																																																																																																																																																																																																																																																																																																																																																																																																																																																																																																																																																																																																																																																																																																																																																																																																																																																																																														
				angles	0° ±2'																																																																																																																																																																																																																																																																																																																																																																																																																																																																																																																																																																																																																																																																																																																																																																																																																																																																																																																																																																																																																																																																																																																																																																																																																		
				dr	R. RINEHART	8/22/00		product family						PCMCIA		code																																																																																																																																																																																																																																																																																																																																																																																																																																																																																																																																																																																																																																																																																																																																																																																																																																																																																																																																																																																																																																																																																																																																																																																																							
				engr	D. BRANN	8/22/00		size						dwg no																																																																																																																																																																																																																																																																																																																																																																																																																																																																																																																																																																																																																																																																																																																																																																																																																																																																																																																																																																																																																																																																																																																																																																																																									
				chr	D. BRANN	8/22/00		scale								sheet																																																																																																																																																																																																																																																																																																																																																																																																																																																																																																																																																																																																																																																																																																																																																																																																																																																																																																																																																																																																																																																																																																																																																																																																							
				appd	D. BRANN	8/22/00		1:1						A4		55952		4 of 4																																																																																																																																																																																																																																																																																																																																																																																																																																																																																																																																																																																																																																																																																																																																																																																																																																																																																																																																																																																																																																																																																																																																																																																																					
sheet index		revision sheet																																																																																																																																																																																																																																																																																																																																																																																																																																																																																																																																																																																																																																																																																																																																																																																																																																																																																																																																																																																																																																																																																																																																																																																																																					